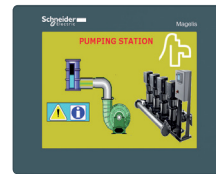


# Magelis Keypad-Touchscreen Panels & HMI Controllers



## Magelis GK Keypad-Touchscreen Panels

Screen size	5.7"	10.4"
Screen resolution (pixels)	320 × 240	640 × 480
Touch screen or keypad	Keypad and touch screen	
Software	Vijeo Designer/Vijeo XD (1)	
Memory capacity	Application memory	128 MB
	Backup memory	512 KB
	Expansion memory	SD card (2)
Communication	Ethernet port	1 LAN port
	Fieldbus	Fipio/Fipway and Modbus Plus via USB gateway
	Serial line	RS-232C (COM1) + RS-485 (COM2)
	USB connection	1 type A host connector + 1 mini-B connector
Operating temperature	0...55 °C	
Certifications	CE, RCM, CULus, UL class 1 Div2, EAC, KC	
Cut-out (mm)	209 × 243	285 × 309
Dimensions (mm)	220 × 265 × 70	296 × 332 × 76
Reference	<b>HMIGK2310</b>	<b>HMIGK5310</b>



## Magelis SCU HMI Controllers

Screen size	3.5"	5.7"			
Screen resolution (pixels)	320 × 240				
Touch screen or keypad	Touch				
Software	SoMachine				
Memory capacity	Application memory	128 MB			
	Backup memory	128 KB			
	Expansion memory	No			
Digital I/O	Input	16	8	16	8
	Output	10	8	10	8
Analog I/O	Input	No	4	No	4
	Output	No	2	No	2
Communication	Ethernet	1 LAN port			
	Serial Line	RS-485/RS-232 (COM1)			
	Fieldbus	CANopen master			
	USB connection	1 type A host connector + 1 mini-B connector			
Operating temperature	0...50 °C				
Certifications	CE, RCM, CULus, UL class 1 Div2, EAC, KC, Marine, ATEX Zone 2/22				
Cut-out (mm)	Ø 22				
Dimensions (mm)	75 × 128 × 102		129.4 × 163 × 76.2		
Reference	<b>HMISCU6A5</b>	<b>HMISCU6B5</b>	<b>HMISCU8A5</b>	<b>HMISCU8B5</b>	

(1) Vijeo XD available for Magelis GK in the 1st quarter 2017.

(2) SD Card sold separately.

# Magelis GTU Universal Panels



Magelis GTU Displays							
Type of display		Advanced			Smart		
Screen size		7"	10"	12"	10.4"	12.1"	15"
Screen resolution (pixels)		800 × 480	1280 × 800		800 × 600	1024 × 768	
Touch screen or keypad		Touch			Multi-touch		
Compatible Box		Premium/Open			Premium/Open	Open	Premium/Open
Functions	Brightness Sensor	No			Yes		
	Scalar	No			Yes		
	Front USB	No			Yes		
	Wireless Antenna	No			No	Yes	No
Operating temperature		0...60 °C					
Certifications		CE, RCM, CULus, UL class 1 Div2, EAC, KC, Marine, ATEX Zone 2/22					
Cut-out (mm)		190 × 135	255 × 185	295 × 217	259 × 201	301.5 × 227.5	383.5 × 282.5
Dimensions (mm)		204 × 149 × 67	269 × 199 × 67	309 × 231 × 67	273 × 215 × 67	315 × 241 × 67	397 × 296 × 67
Reference		<b>HMIDT351</b> 1	<b>HMIDT551</b> 2	<b>HMIDT651</b>	<b>HMIDT542</b>	<b>HMIDT642</b> 3	<b>HMIDT643</b>
						<b>HMIDT732</b> 4	



Magelis GTU Box			
Type of Box		Premium	Open
Operating system		Real time OS	Windows 7 Embedded
Software		Vijeo Designer/Vijeo XD	
Memory capacity	Application memory	256 MB	2 GB
	Backup memory	512 KB	
	Expansion memory	SD card	SD card & CFast card 32 GB (1)
Communication	Ethernet port	2 LAN ports	
	Serial Line	RS-485 (COM1) + RS-232/RS-485/RS-422 (COM2)	
	Fieldbus	Fipio/Fipway and Modbus Plus via USB Gateway, CANopen slave module, Profibus DP slave module	
	USB	2 type A host connector + 1 mini-B connector	3 type A host connector + 1 mini-B connector
Operating temperature		0...60 °C	
Certifications		CE, RCM, CULus, UL class 1 Div2, EAC, KC, Marine, ATEX Zone 2/22	
Dimensions (mm)		45 × 131 × 188	
Reference		<b>HMIG3U</b>	<b>HMIG5U</b>

(1) SD card and CFast card sold separately.

Schneider Electric Industries SAS

www.schneider-electric.com

Head Office  
35, rue Joseph Monier  
F-92500 Rueil-Malmaison  
France

The information provided in this documentation contains general descriptions and/or technical characteristics of the performance of the products contained herein. This documentation is not intended as a substitute for and is not to be used for determining suitability or reliability of these products for specific user applications. It is the duty of any such user or integrator to perform the appropriate and complete risk analysis, evaluation and testing of the products with respect to the relevant specific application or use thereof. Neither Schneider Electric nor any of its affiliates or subsidiaries shall be responsible or liable for misuse of the information contained herein.

Design: Schneider Electric  
Photos: Schneider Electric