



Motor Management Solutions for your industrial process and infrastructure needs

Discover how we can improve your business's efficiency and sustainability today

se.com/motormanagement

Life Is On

Schneider
Electric

Discover opportunities for growth with digital transformation solutions like Motor Management

Protect people and assets

- Coordination between motor starter devices
- Power quality

Optimize architecture design, with easy product choice and system stability during system startup

- Reference architectures
- Motor Control Configurator
- Motor Management Design tool

Assist remote asset management

- Control and monitoring
- DCS integration

Insulate the motor starter in case of failure, while minimizing downtime:

- Protection selectivity
- Local monitoring



Schneider Electric™

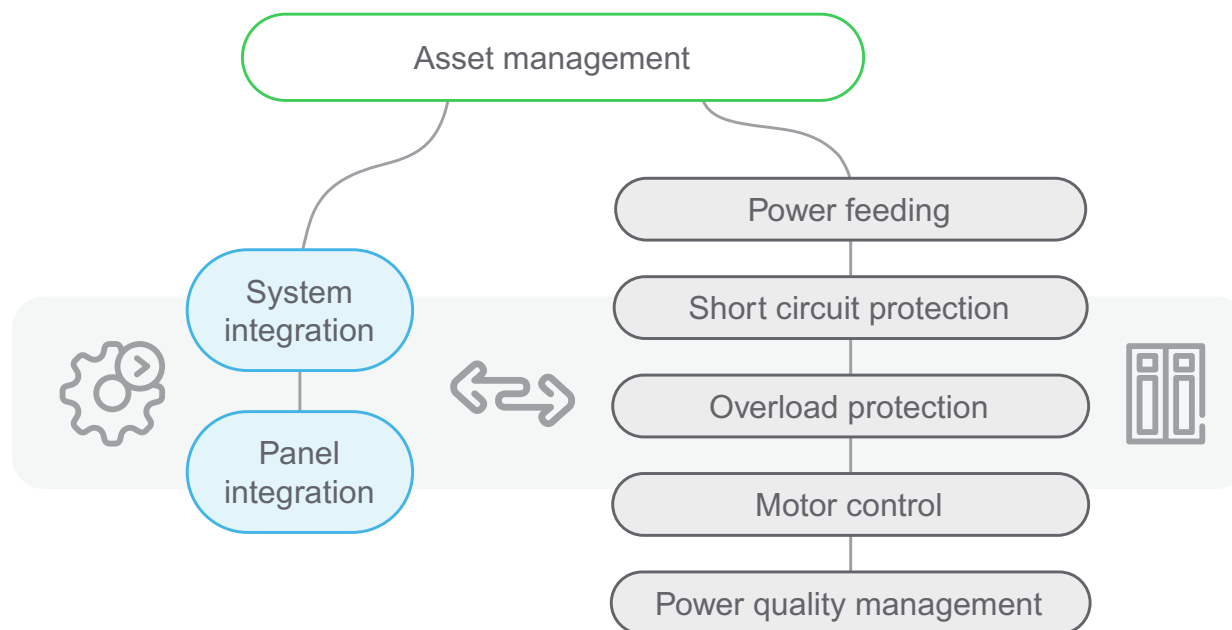
Motor Management Solution to:

Bridge automation and power architectures for increased efficiency of motors.

Simplify architecture design and product selection.

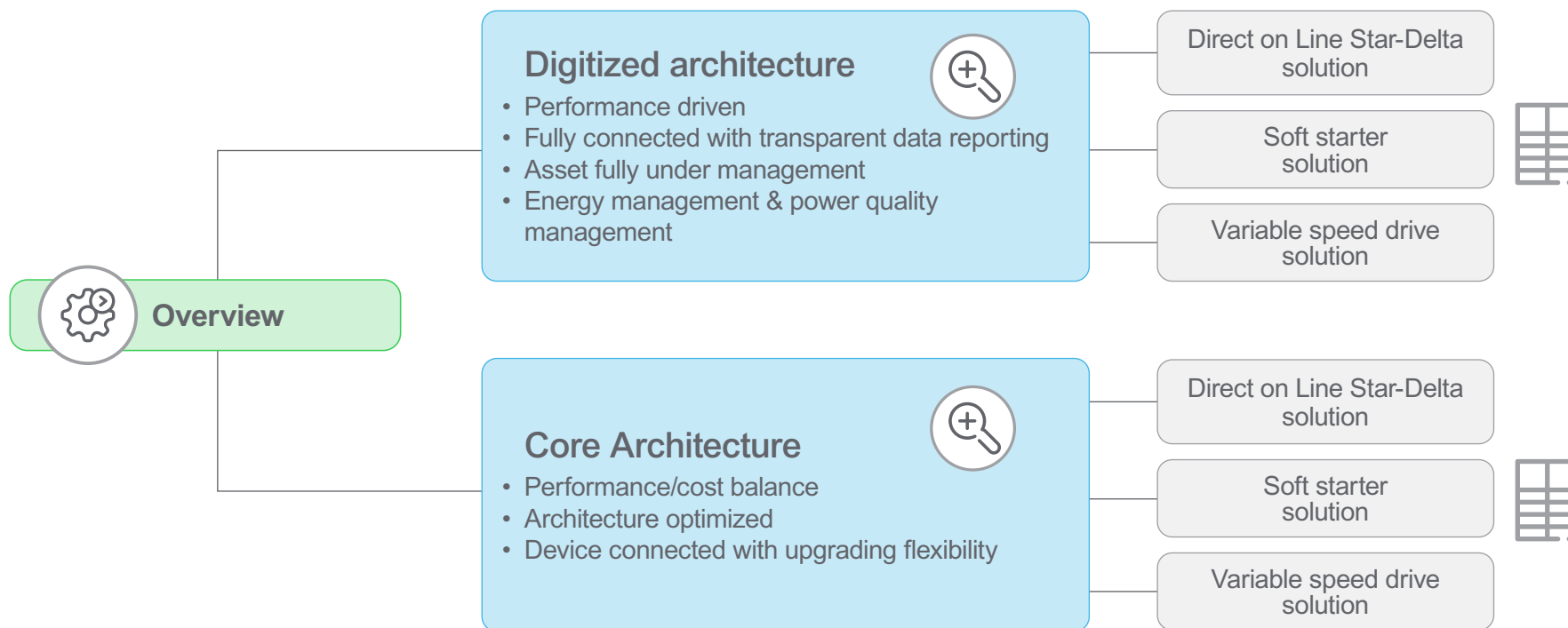
Asset performance management for improved asset reliability, maintenance and optimization.

Motor management framework



Motor Management Solution:

Two dedicated architectures for process and Infrastructure businesses



Motor Management architectures for process and infrastructure, overview

Voltage	Low voltage	Medium Voltage
User Type	Process / Infrastructure	
EcoStruxure Integration	EcoStruxure™ Power, Ecostruxure Plant	
Selection and Design Tool	EcoStruxure Motor Control Configurator, EcoStruxure Motor Management Design, EcoStruxure Power Build	
Motor Start and Operation	Direct On Line & Star-Delta	Soft Start & Speed Drive
Power Feeder	Air Circuit Breaker	Breaker
Short Circuit Protection	Motor Protection Circuit Breaker magnetic	Motor Protection Circuit Breaker Thermal magnetic
Overload & Malfunction Protection	Thermal / Intelligent motor protection relay	Motor Protection Circuit Breaker magnetic
Motor Control	Contactor	Soft Starter
Metering & Monitoring	Intelligent motor protection relay	Micrologic
Panel Integration	Power Meter	Variable Speed Drive
Electrical Network Integration	Standard MCC Panel / universal enclosure	
Process / System Integration	Power factor correction, harmonic mitigation, power quality management , energy management	
Asset Management	Programmable Logic Controller + Emergency Shutdown* + Distributed Control System **	
	Thermal monitoring, preventive and predictive maintenance	

** Foxboro DCS or Hybrid DCS *Triconex offer

Digitized architecture for process and infrastructure, DOL overview

Voltage	Low Voltage	Medium Voltage			
User Type	Process / Infrastructure				
EcoStruxure Integration	EcoStruxure™ Power, Ecostruxure Plant				
Selection and Design Tool	Ecostruxure Motor Control Configurator, EcoStruxure Motor Management Design				
Motor Start and Operation	1 Device	2 Devices	3 Devices		
Power Feeder	PacT ComPacT				
Short Circuit Protection		TeSys GV	TeSys GS	MV breaker	MV Fuse
Overload & Malfunction Protection	TeSys U	TeSys GV	TeSys T	Advanced Motor protection	
Motor Control		TeSys D, F		MV breaker	MV Contactor
Metering & Monitoring	Power Meter	Micrologic	Power Meter	TeSys T	Advanced Motor protection
Panel Integration	Standard iMCC Panel, Spacial			MV Panel	
Electrical Network Integration	Power Quality and Power Factor Correction				
Process / System Integration	PLC + Emergency Shutdown* + Distributed Control System (DCS**)				
Asset Management	Thermal monitoring, preventive and predictive maintenance				

**Foxboro DCS or Hybrid DCS *Triconex offer

Digitized Motor Management architecture for process and infrastructure, soft-starter

Voltage	Low Voltage	Medium Voltage
User Type	Process / Infrastructure	
EcoStruxure Integration	EcoStruxure™ Power, Ecostruxure Plant	
Selection and Design Tool	Ecostruxure Motor Control Configurator, EcoStruxure Motor Management Design	
Motor Start and Operation	LV Soft Start	MV Soft Start
Power Feeder	PacT ComPacT	
Short Circuit Protection	TeSys GV	Switch + MV Fuse MV breaker
Overload & Malfunction Protection	TeSys D, F + Altivar Soft Starters	
Motor Control	MV softstarter	
Metering & Monitoring	TeSys I	Power Meter Micrologic Advanced Motor protection
Panel Integration	Standard iMCC Panel, Spacial	
Electrical Network Integration	Power Quality and Power Factor Correction	
Process / System Integration	PLC + Emergency Shutdown* + Distributed Control System (DCS**)	
Asset Management	Thermal monitoring, preventive and predictive maintenance	

**Foxboro DCS or Hybrid DCS *Triconex offer

Digitized Motor Management architecture for process and infrastructure, VSD

Voltage	Low Voltage	Medium Voltage
User Type	Process / Infrastructure	
EcoStruxure Integration	EcoStruxure™ Power, Ecostruxure Plant	
Selection and Design Tool	Ecostruxure Motor Control Configurator, EcoStruxure Motor Management Design	
Motor Start and Operation	Speed Drive	Speed Drive
Power Feeder	PacT ComPacT	MV fuses + Contactor + transformer protection type
Short Circuit Protection	TeSys GV	MV breaker + transformer protection type
Overload & Malfunction Protection	Altivar Process	Altivar Process (Medium voltage)
Motor Control	Altivar Process (System drives)	
Metering & Monitoring		
Panel Integration	Standard MCC Panel, Spacial	MV Panel
Electrical Network Integration	Power Quality and Power Factor Correction	
Process / System Integration	PLC + Emergency Shutdown* + Distributed Control System (DCS**)	
Asset Management	Thermal monitoring, preventive and predictive maintenance	

**Foxboro DCS or Hybrid DCS *Triconex offer

Core architecture for process and infrastructure, DOL overview

Voltage	Low Voltage	Medium Voltage			
User Type	Process / Infrastructure				
EcoStruxure Integration	EcoStruxure™ Power, Ecostruxure Plant				
Selection and Design Tool	Ecostruxure Motor Control Configurator, EcoStruxure Motor Management Design				
Motor Start and Operation	1 Device	2 Devices	3 Devices		
Power Feeder	PacT ComPacT				
Short Circuit Protection		TeSys GV	TeSys GS	MV breaker	MV Fuse
Overload & Malfunction Protection	TeSys U	TeSys GV	TeSys LR	Basic Motor protection type	
Motor Control		TeSys D, F		MV breaker	MV breaker
Panel Integration	Standard MCC Panel, Spacial			MV Panel	
Electrical Network Integration	Power Quality and Power Factor Correction				
Process / System Integration	PLC + Emergency Shutdown* + Distributed Control System (DCS**)				
Asset Management	Thermal monitoring, preventive and predictive maintenance				

**Foxboro DCS or Hybrid DCS *Triconex offer

Core Motor Management architecture for process and infrastructure, soft-starter

Voltage	Low Voltage	Medium Voltage
User Type	Process / Infrastructure	
EcoStruxure Integration	EcoStruxure™ Power, Ecostruxure Plant	
Selection and Design Tool	Ecostruxure Motor Control Configurator, EcoStruxure Motor Management Design	
Motor Start and Operation	LV Soft Start	MV Soft Start
Power Feeder	PacT ComPacT	
Short Circuit Protection	TeSys GV	Switch + MV Fuse MV breaker
Overload & Malfunction Protection	Altivar Soft Starters Micrologic	MV softstarter
Motor Control	TeSys D, F + Altivar Soft Starters	
Panel Integration	Standard MCC Panel, Spacial	MV Panel
Electrical Network Integration	Power Quality and Power Factor Correction	
Process / System Integration	PLC + Emergency Shutdown* + Distributed Control System (DCS**)	
Asset Management		

**Foxboro DCS or Hybrid DCS *Triconex offer

Core Motor Management architecture for process and infrastructure, VSD

Voltage	Low Voltage	Medium Voltage
User Type	Process / Infrastructure	
EcoStruxure Integration	EcoStruxure™ Power, Ecostruxure Plant	
Selection and Design Tool	Ecostruxure Motor Control Configurator, EcoStruxure Motor Management Design	
Motor Start and Operation	Speed Drive	Speed Drive
Power Feeder	PacT ComPacT	MV breaker + transformer protection
Short Circuit Protection	TeSys GV	
Overload & Malfunction Protection	Altivar Process	Altivar Process (System drives)
Motor Control		Altivar Process (Medium voltage)
Panel Integration	Standard MCC Panel, Spacial	Altivar Process (System drives)
Electrical Network Integration	Power Quality and Power Factor Correction	
Process / System Integration	PLC + Emergency Shutdown* + Distributed Control System (DCS**)	
Asset Management		

**Foxboro DCS or Hybrid DCS *Triconex offer

How to quickly make a selection?

EcoStruxure™ Motor Control Configurator ⓘ

Start your configuration

Variable Speed Drive ⓘ 0,18-315 kW 

Drive provides you with a flexible motor control and have a wide range of possibilities

Soft Starter ⓘ 0,37-500 kW 

Soft starter lets you to start smoothly and increase the speed of the engine

Direct Starter ⓘ 0,06-355 kW 

Simplest way to start your motor with no speed or frequency control

TeSys island ⓘ 0,06-37 kW 

Create a connected group of Direct Online Starters (DOL) or import existing configuration

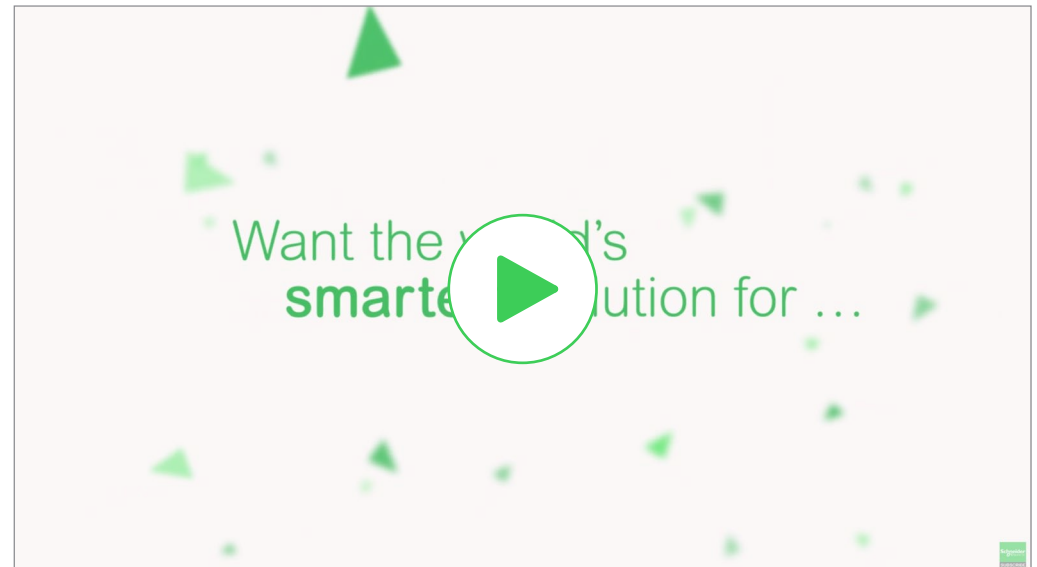
Use existing one

Enter your configuration ID

No saved configurations found

Saved TeSys island configurations (0)

No saved configurations



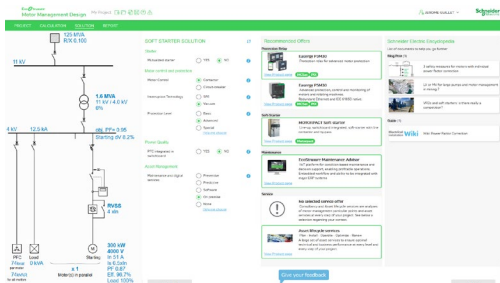
Resource
Information

How to compare different solutions?

A dedicated application for experts and engineers

Calculations and motor management solution selection for high powered LV and MV motor applications.

Save time for equipment sizing while focussing on the essentials: how to start, protect and manage power quality and monitor your motor and application.



Resource
Information

Need more resources and information?

Learn more about our motor control applications

- [EcoStruxure Motor Control Configurator](#)
- [EcoStruxure Motor Management Design](#)
- [LV vs MV dilemma A guide to large pump operation in mining](#)
- [Brochure - Bring greater efficiency to your mining operations](#)
- [High Power Motor Management Offer Panorama](#)
- [Brochure - Motor Management for LV and MV high-power motor applications](#)
- [iPMCC : Intelligent Power and Motor Control systems](#)
- [TeSys catalogue - Circuit breaker + contactor coordination tables and design guideline](#)

Learn more about Schneider Electric
visit www.se.com/motormanagement

Schneider Electric
35 rue Joseph Monier
92500 Rueil-Malmaison, France
Tel: +33 (0)1 41 29 70 00

© 2020 Schneider Electric. All Rights Reserved. Life is On Schneider Electric, and associated brands are trademarks and the property of Schneider Electric SE, its subsidiaries and affiliated companies.
998-20895157_GMA

Life Is On



Schneider
 **Electric**

se.com/motormanagement