



# EcoStruxure Building Expert Solution

Get control. Get efficient. Get value.  
Integrated small- to medium-sized building management

[schneider-electric.com](https://schneider-electric.com)

Life Is On

**Schneider**  
Electric

Studies show that most buildings waste up to half the energy they consume. EcoStruxure Building Expert solution allows you to save that energy while significantly improving comfort – and your bottom line.



# Finally, efficient building control made affordable for smaller-scale buildings

Energy consumption and waste is a significant concern, no matter what size building you operate. Large buildings have enjoyed the benefits of building automation for years, reducing energy costs and creating a better environment for their occupants and customers. But what about buildings with a smaller footprint? Until now, that kind of technology has likely been too expensive or too impractical to use. Instead, facility managers have had to settle for thermostats and high energy bills. Schneider Electric™ has leveled the playing field with EcoStruxure Building Expert solution – an affordable building management system (BMS) specifically designed for small and medium size buildings. Easy to install with minimal interruption to your daily operations, EcoStruxure Building Expert solution delivers immediate energy savings without compromising on comfort. Finally, you too can enjoy the same benefits historically only offered in large-scale building management systems – and at a small-scale price.

## Did you know?

Energy expenses in the average commercial building consist of:

HVAC = 32-50%

Lighting = 20-25%

Refrigeration = 4-6%

\*A BMS can cover approximately 56-81% of your building's energy use!

## Turning challenges into opportunities

- Energy prices are unstable and continue to rise with HVAC as the #1 contributor in most buildings. Delivering up to 30% energy savings, EcoStruxure Building Expert outsmarts energy challenges and adheres to strict efficiency regulations.
- Flexibility is crucial yet can be scarce in building automation. EcoStruxure Building Expert encompasses the very essence of flexibility and can be custom-designed for easy integration into virtually all building types.
- Most BMSs are expensive and complex, not fitting the profile for smaller buildings. EcoStruxure Building Expert is specifically designed to adapt to your requirements, which makes it affordable and attainable.
- Downtime is lost revenue and simply not an option. With EcoStruxure Building Expert's non-intrusive installation and wireless technology, you can stay open and rely on minimal disruption to your business.
- Protecting your investment is of utmost importance. You need a solution that is able to grow with your bw will seamlessly scale for continuous improvement and a future-proof solution.

\* Source: Buildings Energy Data Book, U.S. Department of Energy

## Drive additional ROI

It's not just about energy savings. EcoStruxure Building Expert can dramatically improve uptime, increase staff productivity, strengthen asset life and reduce maintenance costs and CO<sub>2</sub> emissions - helping you overcome some of your core business challenges.

# A solution that pays for itself. Year after year.

EcoStruxure Building Expert uses web and wireless technology, reducing complexity and making it a true cost-effective solution for your small building. Long-term energy savings is made possible by features such as trending, which enables you to export data and analyze energy usage for preventative measures today and tomorrow.

Best of all, EcoStruxure Building Expert solution pays for itself with a quick return on investment. That makes it one of the best investments a building owner can make.

# A solution you can use today, and grow tomorrow.

Future-proof your investment with a solution that is fully scalable.

It starts with low cost and easy installation via wired or wireless network options that enable fast deployment and won't disrupt your building, occupants or customers. It provides state-of-the-art capabilities for controlling your building today. And, it grows with you for easy integration into a larger building management solution. You can even control multiple buildings across your enterprise with remote monitoring using webenabled software.

Schneider Electric's experts will partner with you to deliver a solution that fits your unique needs today – and tomorrow.

## Future-proof solution

Driving net present value (NPV) and internal rate of return (IRR) are at the forefront of your decisionmaking process.

EcoStruxure Building Expert boosts these metrics, delivering an attractive investment spanning the life of your building.

## Optimizing building performance

### Features

- Industry-leading wireless technology to control your HVAC, lighting and metering
- Fully programmable, providing anytime, anywhere remote access
- Lowest total cost of ownership with nolicense-fee software and the controller, gateway and server all in one box
- Flexible monitoring, control, and scheduling options
- View all your systems on a customizable web user interface
- Simplified engineering and scalability through open systems and pre-configured objects and applications
- Support FTP, Modbus®, CANbus™, ZigBee®, EnOcean®, BACnet®, and oBIX®

### Benefits

- Effectively manage your energy costs and your energy waste
- Optimize operational efficiency as well as productivity, equipment performance and reduced risk
- Quickly realize ROI through enticing pay-back periods
- Enhance occupant comfort and maximize business operations
- Fast installation for zero downtime and minimal expense
- Reduce your carbon footprint
- Stay ahead of increasingly stringent environmental regulations



Buildings with a footprint of 10,000 m<sup>2</sup> (100,000 f<sup>2</sup>) or less represent a majority of all commercial buildings. However, less than 10 percent of these facilities benefit from the ROI delivered by building management systems. Now they can.

# How it all works

EcoStruxure Building Expert solution offers all the building management system functionalities necessary to optimize energy efficiency and comfort in small and medium facilities. It combines a no license-fee web interface and cutting edge hardware to integrate and manage your building's systems at the lowest total cost of ownership per location.



## EcoStruxure Building Expert

The software behind EcoStruxure Building Expert. It is fully programmable and includes:

### Access

- Local and remote access via the LAN or web.
- Protected user-rights

### Monitoring

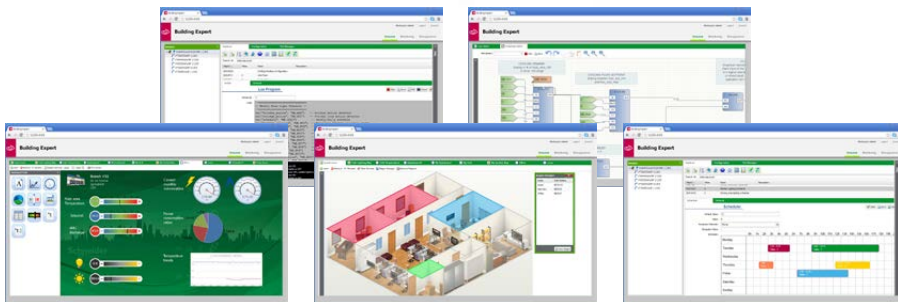
- Dashboards
- Floorplans

### Control

- Programmable using scripts or graphical programming
- Schedules, events, alarms

### Scalability

- Export data for analysis
- Integration to other systems



## Multi-Purpose Managers

These are the bridges between your building's systems, and your ability to control them. They combine controller, gateway, and Web server capabilities, all in one box. They can integrate a wide variety of devices and systems, using either wired or wireless communication, including: EnOcean, ZigBee, Modbus, as well as analog and binary inputs and outputs.



## Controllers and Sensors

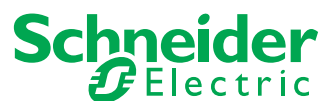
Connect, monitor and control your building's systems using controllers and sensors made specifically for your HVAC, lighting, and power systems, with an ever-growing ecosystem of integrated Schneider Electric and third-party devices.

*Small sample of integrated products\**

EcoStruxure Building Expert solution can be integrated into larger BMS solutions, such as Schneider Electric's EcoStruxure Building Expert solution, using MPM devices connected via BACnet/IP.



Life Is On



For more information,  
please visit <http://www.schneider-electric.com/buildings>

Schneider Electric Industries SAS

35, rue Joseph Monier - CS 30323  
F92506 Rueil-Malmaison Cedex, France  
[www.schneider-electric.com](http://www.schneider-electric.com)

May 2018