

Life Is On

Schneider Electric

# Rockwell PLC-5 to Modicon M580

Upgrading your control system is easier than you think.

## Challenges you may be facing:

- Unexpected downtime due to aging equipment
- Difficulty supporting multiple PLC platforms and programming software packages
- Preserving the investment in your existing system during an upgrade
- Reduction in skills and/or staff at your plant
- Limited scheduled downtime during upgrades

## Benefits of migrating to M580:


- Minimum downtime and risk to upgrade — do it during planned maintenance
- Retain prior investment in software and field wiring
- Reduce unplanned downtime and enhance cybersecurity
- Productivity benefits from a new, more transparent, future-proof solution
- Supported by Schneider Electric global service and execution capabilities

## Solutions and services for a smoother modernization

- Extensive experience with successful PLC-5 to M580 migrations
- Automatic conversion of your PLC-5 application into EcoStruxure Control Expert (formerly Unity Pro)
- Stepwise upgrades in phases to meet your budget and schedule
- Retain your existing I/O and racks if required
- Quick wiring solutions eliminate the time and risk of rewiring existing I/O

## Switch to Modicon M580

Replace CPU with Modicon M580 and retain application program with a conversion service. Choose the preferred I/O rack and wiring solution — partial, stepwise, or full:

Legacy CPU and I/O	Targeted CPU	Partial: Retain I/O racks and wiring	Stepwise: Change I/O racks, retain wiring	Full: Full replacement
PLC-5 CPU and PLC-5 I/O	 Modicon M580	<input checked="" type="checkbox"/>	<input checked="" type="checkbox"/>	<input checked="" type="checkbox"/>



From  
Rockwell PLC-5®



To  
Modicon™ M580

“I want to thank the Schneider Electric services team for our migration from Rockwell to the Modicon system. Because our sodium hypochlorite system is our plant’s primary means of disinfection, it was imperative that a quick, seamless migration took place. Our project of migrating to an improved PLC was done in a highly satisfactory manner. Thank you!”

Controls Engineer — Water/Wastewater plant


### Automated efficiency

Repeatable, reliable processing with our conversion software

### Minimal downtime

Typically 1 hour migration time per eight-slot rack

### PLC application conversion and software upgrade:

	Automatic conversion <sup>1</sup> of PLC-5 application to EcoStruxure Control Expert (formerly Unity Pro)	<input checked="" type="checkbox"/>
--	---	-------------------------------------

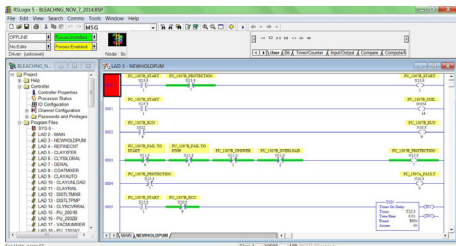
<sup>1</sup>Some applications may require minor adjustments

# Migration solutions for Rockwell PLC-5

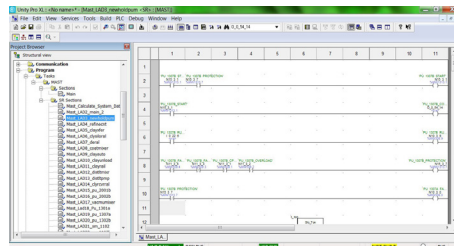
## Software upgrade to EcoStruxure Control Expert (formerly Unity Pro)

Our proprietary software converter enables efficient conversion of your PLC-5 application to the Modicon M580 platform:

- Retain the look, feel, and function of your legacy applications
- Build on them by adding programming sections using the latest programming languages, functions, objects, and libraries of EcoStruxure Control Expert (formerly Unity Pro)



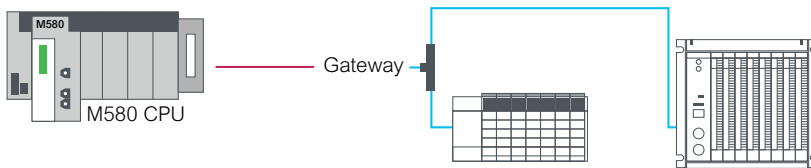
Before conversion



After conversion

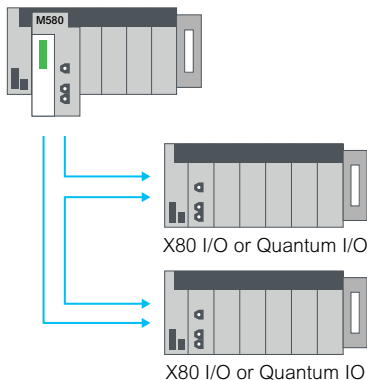
## Hardware upgrade

Partial PLC upgrade to Modicon M580, retaining legacy I/O racks and wiring:



Modicon M580 connects to PLC-5 I/O using Ethernet to Rockwell Remote I/O gateway

## Total PLC upgrade to Modicon M580 and new X80 I/O while retaining field wiring



### Time-saving solutions:

Our quick wiring adapters let you change legacy Rockwell PLC-5 I/O while retaining field wiring:



PLC-5 I/O quick wiring adapters mounted on an M580 PLC



Wiring adapter

## Benefits

### For software

- Retention of prior investment in PLC-5 programs
- Reduced risk and errors due to automatic conversion of legacy programs
- Reduced time to complete — migrations can be done in scheduled maintenance downtime windows

### For hardware

- Retention of prior investment in existing racks and/or wiring
- Simplified modernization with no rewiring and reduced commissioning time
- Flexibility to upgrade in phases — address operational or budget constraints

[schneider-electric.com/processautomation](https://schneider-electric.com/processautomation)

Life Is On

Schneider Electric