



# Proven control solutions for rotating equipment

Guardian: increased uptime, optimized energy usage, and reduced emissions



[schneider-electric.ca](https://www.schneider-electric.ca)

Life Is On 

**Schneider**  
Electric





Guardian™ delivers industry-leading automation and control solutions for unit control of rotating equipment and machinery.



24/7 support, year round

Incorporating driver, process, and auxiliary control requirements into a unit control scheme, Guardian solutions are ...

- Designed to increase machine uptime, optimize energy usage, and reduce emissions
- Configurable to your application

#### Committed to quality and service

With hundreds of successfully installed solutions, you can depend on our team of experienced engineers and technologists to ...

- Match the right Guardian solution to your application
- Provide expert field support during commissioning and start-up

Guardian control technology provides process optimization thanks to ...

#### Versatile application knowledge

- Comprehensive field experience in solutions for electric or engine-driven screw and reciprocating compressors

#### Retrofit programs

- Regenerate brownfield sites with solutions for aging integral or separable compressors
- Replace aging or obsolete electronic/pneumatic control systems
- Update systems to the latest programmable logic controller (PLC) technology

#### Greater machine safety

- Provides effective and reliable alarm and shutdown features

#### Asset maximization

- Incorporates control algorithms to reduce downtime and withstand process upsets
- Increases machine efficiency with effective horsepower/load management

#### Enterprise compatibility

- Integrates seamlessly to upstream enterprise control systems
- Provides real-time and historical trending and event data to evaluate and optimize machine performance

Guardian solutions include:

Complete turnkey automation capability	Engine air-fuel ratio control
Turnkey retrofits for existing unit controls	Automated yard valve control and sequencing
Shutdown and control functionality, including one-touch start sequencing	Compatibility with enterprise controls
Multilevel user security	Remote control access capability



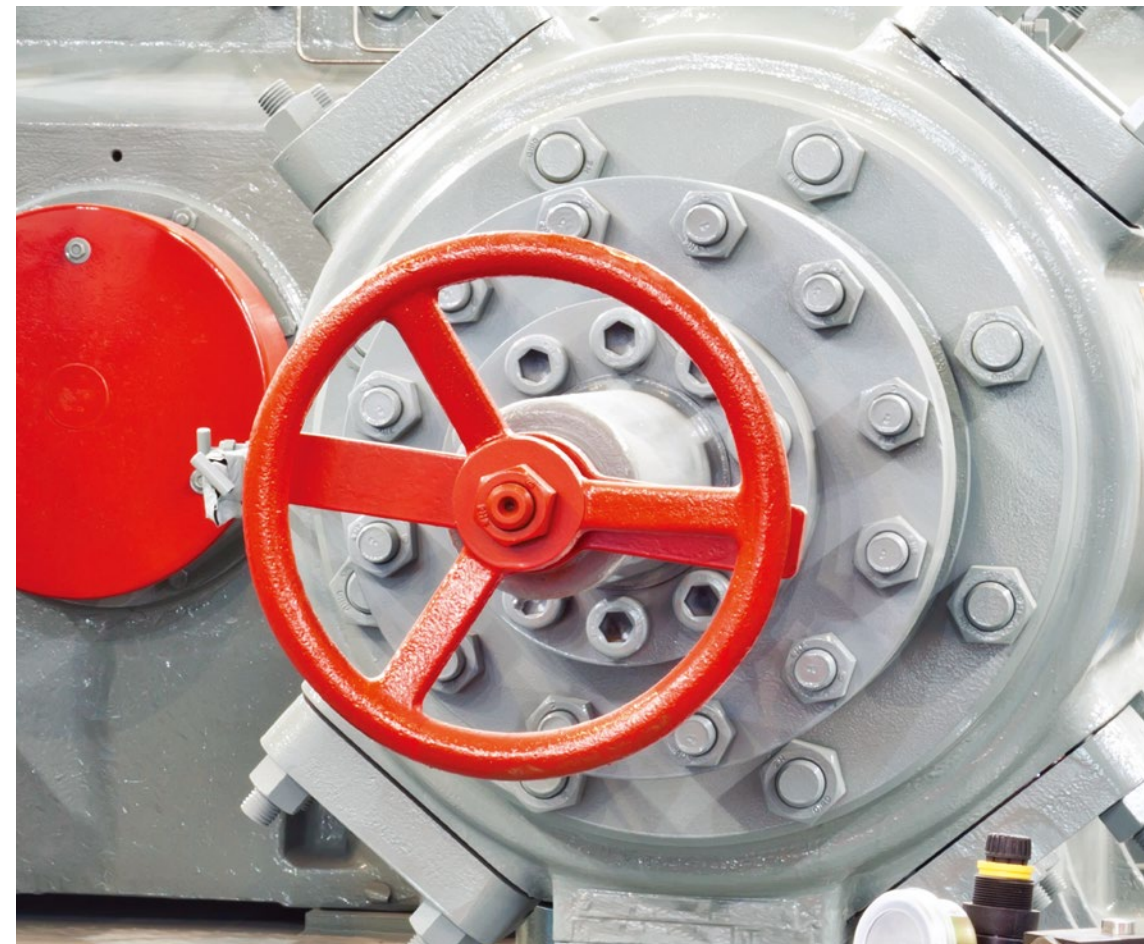
cCSAus certified Class 1 Division 2

ATEX compliant

Multivendor hardware support

Nonpropriety PLC/HMI technology

Online configuration via HMI



Diverse industrial applications, including:

- Gas compression
- Water injection
- Vapor recovery
- Power generation
- Three-phase pumping
- Acid gas injection



Offshore or onshore applications

Schneider Electric Canada, Inc.

5985 McLaughlin Road  
Mississauga, ON L5R 1B8  
Tel: 1-800-565-6699

[www.schneider-electric.ca](http://www.schneider-electric.ca)

March 2017

©2017 Schneider Electric. All Rights Reserved.  
All trademarks are owned by Schneider Electric Industries SAS or its affiliated companies.  
998-1241634\_CA

Life Is n

**Schneider**  
 **Electric**

This document has been  
printed on recycled paper

