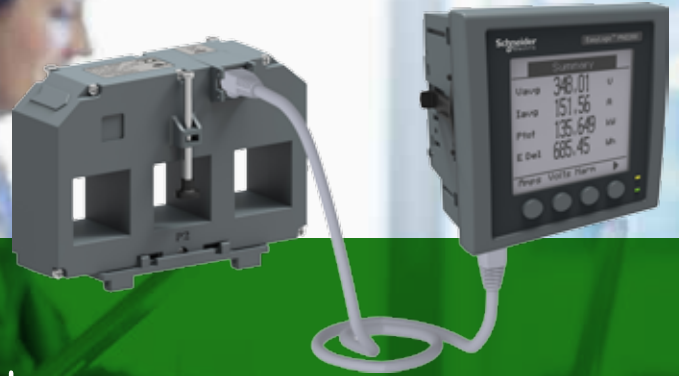


Life Is On

Schneider
Electric

EasyLogic™ PM22xxR Quick Click power meters



Tool-less, plug and play LVCT connected meters that save up to 75% on installation time! Save money and maintain a reliable, dependable electrical distribution network. Also ideal for secondary billing applications in large commercial complexes, switchboards, switchgear, genset panels, and OEM panel boards.

Accuracy, precision, and essential measurements

- **Essential measurements:** collect the parameters you need with a single meter — voltage, current, % unbalance, meter operation timer, run hours.
- **Accuracy Class 1.0 as per IEC 62053-21:** critical for precision energy accounting and balancing, cost allocation, and tenant billing.
- **Reactive energy accuracy IEC 62053-24 Class 1.0:** for increased precision on energy billing even with low power factor, minimizing errors and potential penalties that cost you money.
- **THD% (& Individual harmonics up to 15th for PM2200R) order for voltage and current circuit:** accurate harmonics monitoring under varied operating conditions helps determine harmonic contents and causes.
- **Min/max values with date/time stamp:** time stamps on commonly-viewed instantaneous parameters (V L-L, V L-N, Amps, W, VA, VAR, PF, Hz) help analyse the electrical network and pinpoint abnormalities.
- **Rate counters:** two configurable rate counters for custom use (e.g. measure kgCO₂/kWh or tariff rate based on the energy consumption).
- **Time-configurable snapshot:** for precise calculation of multiple feeder readings. Commonly-viewed parameters (volts, amps, power, and energy) are captured at any configurable time zone or time of day.
- **High sampling rate:** 64 samples/cycle for 50/60 Hz electrical networks, essential for detecting and capturing power quality events and accurate electrical parameters measurements.

Security and data integrity

- **Password settings:** field-configurable passwords for securing set up information and preventing tampering of integrated values.
- **Cybersecurity:** option for disabling RS-485 port via front panel keys against unauthorized access. This feature can also be used for maintenance and troubleshooting of complex communication networks.
- **Tamper proof:** terminal cover with sealing options protect against tampering of input signals and help ensure data integrity.



EasyLogic™ PM22xxR quick click power meters



"Quick Click" LVCT

EasyLogic PM22xxR power meters automatically detect CT ratio and self-configure — no manual CT setup is required!

UL and CE markings as per UL/IEC 61010-1 Ed-3

ISO/EHS/OHSAS certified manufacturing facility reinforces product quality and reliability. Independent lab reports available for CE/UL.

Green Premium eco-mark:

Confidently confirm and incorporate compliance status of our products into your environmental policies. Schneider Electric commits to disclose reliable, comprehensive information on the environmental impacts of our products.

Modular and customizable

- **Quick CT connect** via RJ45 port for installation time savings of over 75%; automatic detection of CT phase reversal and CT polarity.
- **Display:** 6 digits for VAF PF parameters with auto scale and auto range features.
- **Native plug-and-play support:** for Ecostruxure™ Power Monitoring Expert, Ecostruxure™ Power SCADA Operation, ION Setup.

CTVxxxxx "3-in-1" LVCTs

- **Five selectable frame sizes (60A – 1600A)** with same dimensions as common MCCBs including Compact NS, NSX, and Powerpact breakers
- **Inherently safe 0.333V CT output**, no CT shorting block required.
- **RJ45 port replaces CT terminals** for installation time savings of over 75%.

Safe, easy, and fast installation

- **Easy to install:** New LVCT RJ45 port replaces CT screw terminals of traditionally wired meters for installation time savings of over 75%
- **Direct application up to 480 V L-L:** supports direct connection to low voltage systems up to 480V L-L for CAT III installations, simplifying installation, saving costs, and facilitating more accurate measurements.
- **AC/DC control power with universal operating range:** connect to a universal control power range of 44 V to 300 V AC/DC, allowing tremendous cost savings during installation.
- **Automatic detection of CT phase reversal and CT polarity**, with ability to correct errors through the HMI
- **Automatic detection of CT ratio** once connected and self-configures - no manual set up / config of CTs is needed



Please see your Schneider Electric representative for complete ordering information, including LVCT commercial references.

Meter model	Commercial reference	Description	
PM2210R*	METSEPM2210R	EasyLogic PM2210 VAF P & E meter THD POP CL1, Quick Click LVCT compatibility	
PM2220R*	METSEPM2220R	EasyLogic PM2220 VAF P & E RS485 15thHar CL1, Quick Click LVCT compatibility	
CT reference	Amps/ Phase centers	CT reference	Amps/ Phase centers
METSECTV35006	60A, 35mm	METSECTV45060	600A, 45mm
METSECTV35010	100A, 35mm	METSECTV45063	630A, 45mm
METSECTV35013	125A, 35mm	METSECTV70080	800A, 70mm
METSECTV35016	160A, 35mm	METSECTV70100	1000A, 70mm
METSECTV35025	250A, 35mm	METSECTV70125	1250A, 70mm
METSECTV45025	250A, 45mm	METSECTV70160	1600A, 70mm
METSECTV45040	400A, 45mm		
Cables	Description	Cables	Description
DCEPCURJX5GYM	Category 5e, Patch Cord, UTP, 0.5M, Grey	DCEPCURJ03GYM	Category 5e, Patch Cord, UTP, 0.5M, Grey
DCEPCURJ01GYM	Category 5e, Patch Cord, UTP, 1M, Grey	DCEPCURJ05GYM	Category 5e, Patch Cord, UTP, 5M, Grey
DCEPCURJ02GYM	Category 5e, Patch Cord, UTP, 2M, Grey	DCEPCURJ10GYM	Category 5e, Patch Cord, UTP, 10M, Grey

Schneider Electric Industries SAS Head Office
35 rue Joseph Monier, 92500 Rueil Malmaison Cedex, France
Phone: +33 (0)1 41 29 70 00
www.schneider-electric.com

Life Is On

Schneider
Electric