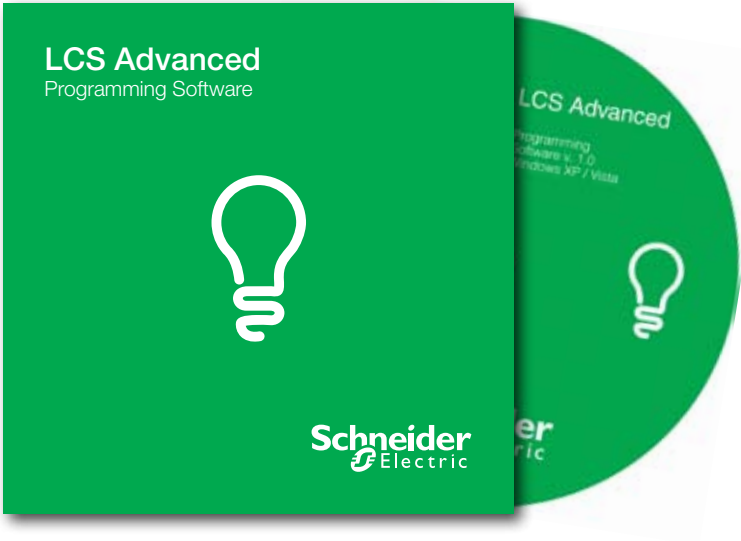
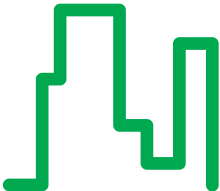


Remotely manage Powerlink® G3 lighting control systems.

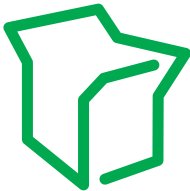
LCS Advanced and LCS Basic software



Education



Office Buildings



Retail



Industry

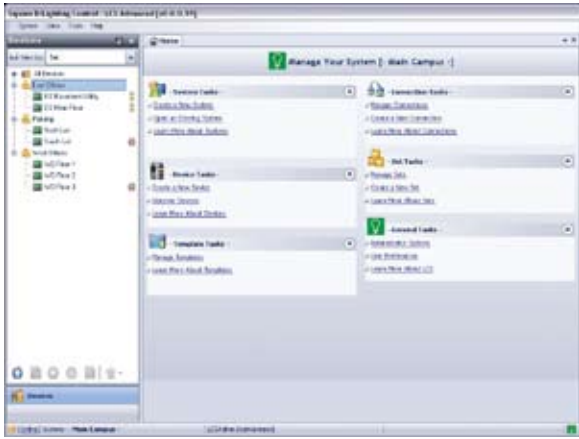


Hospital

Make the most of Your EnergySM



LCS software solution



The quick links and eye-catching icons of LCS software offers users a convenient and easy to use interface to the Powerlink G3 lighting control system.



Remotely manage Powerlink® G3 lighting control systems more dynamically than ever! Powerlink G3 LCS Advanced and LCS Basic software tools allow user's to remotely start-up, monitor, diagnose, maintain and control Powerlink G3 systems over a network.

Convenient Desktop Access

Unlock the potential of the Powerlink® G3 lighting control system with LCS *Basic and Advanced* software from Schneider Electric. Schedule events, override lighting, and check the status of breaker with the click of a button. Easy-to-navigate software gives a whole new meaning to lighting control.

- > Reduce costly down time by using a personal computer to access information and programming.
- > Create schedules that easily apply to all controllers within a system, rather than programming each controller individually.
- > Quickly view branch circuit status.
(on, off, tripped, or non-responding)
- > Examine system event logs, make configuration modifications, create or modify schedules, initiate overrides, and upgrade firmware.

Multi-Device Support (LCS Advanced)

> Imagine having the ability to configure, monitor, or control a hundred or more panels at one time. LCS makes it a reality. From a large office building, college campus, military base, and manufacturing facility, to a small retail site, users of LCS *Advanced* have the ability to configure the entire system from one location, greatly reducing commissioning, monitoring, and control time. Users can quickly view branch circuit status (on, off, tripped, or non-responding) for the entire system at one time. Examine system event logs, make configuration modifications, create or modify time schedules, initiate overrides, and upgrade firmware simultaneously.

Firmware & Software Updates

> Easy to use firmware upgrade features are built directly into the LCS software. This not only allows the user to access the latest and greatest releases, but now LCS gives the user the ability to upgrade their software online as well.

Templates

> LCS implements a new approach to programming Powerlink G3 controllers by using global templates. Global templates allow the user to send "like" configuration data to multiple devices at one time. For instance, a single schedule can be setup one time and applied to multiple devices.

Device Discovery (LCS Advanced)

> LCS *Advanced* software allows discovery of controller devices, taking the guess work out of communication setup. Don't have the IP address of the controllers that are needed to program, monitor, or control? Device discovery allows users to easily setup a system by searching the network and detecting supported devices. Find devices that are connected to a network using a serial, TCP, or gateway connection. Discovered devices can be added to the current system with the click of a button.

File Archiving

> LCS is not tied to any proprietary databases. LCS uses standard file/folder archiving. Need to email a configuration to a facility manager? No problem, just attach the file, click send, and away it goes. No more importing and exporting from a database.



With LCS, enjoy the comfort of tiered security access levels, ensuring that sensitive data and information is always well protected.

Features	LCS Basic	LCS Advanced
Support for NFG3 Devices	■	■
NFG3 Setup	■	■
NFG3 Status	■*	■*
NFG3 Control	■	■
Controller Notes	■	■
Firmware Downloads	■	■
Device Clear Memory	■	■
Device Soft Reset	■	■
Device Configuration Comparison	■	■
Schedule/Special Day Templates	■	■
Restore to Previous Configuration (limited to 1 back-up)	■	■
Reports	■	■
Controller Out-of-sync Status (online only)	■	■
Device Discovery		■
Security	■**	■**
On-line Health Checks	■	■
Group Devices by Logical Set (multiple devices)		■
User Defined Location for Storing Data	■	■
Support for Future Devices	■	■
Online Updates	■	■

* LCS supports list of available autopoll periods for status screens of user's choice

** LCS allows a user to define as many accounts as needed based on 4 levels of ability (Software Supervisors, Supervisors, Power Users and Operators)

Security

> LCS allows different levels of access to a lighting control system. Time, date and user access is recorded in the system log, and user changes and access needs can be restricted.

Reporting

> LCS adds reporting functionality with customizable filtering and logging. Forgot when the last lamping project happened? With a click of a button a user can access breaker on-times and reset counters. Print and export reports to compile system trends.

Compare

> LCS brings a new capability of comparing configurations stored on a computer to the configuration in the Powerlink G3 controller and notifies the user of the differences.

Restore

> LCS can restore configurations to an earlier version, with the click of a button, a backup of the original configuration is readily available.

Network File Sharing Repository

> LCS allows users to save and retrieve configuration files on remote servers creating less confusion when multiple users are accessing and programming the system.

Minimum Hardware Requirements

This software is designed to operate on a PC meeting the following requirements: Processor: 800 MHz, RAM: 512 MB, Hard Drive: 500 MB available, Video 1024x768 minimum resolution, Media: CD-ROM, Inputs: Keyboard and Mouse

Recommended Hardware Requirements

Processor: 1.6 GHz, RAM: 1 GB, Hard Drive: 500 MB available, Video 1280x1024 minimum resolution, Media: CD-ROM, Inputs: Keyboard and Mouse

Supported Operating Systems

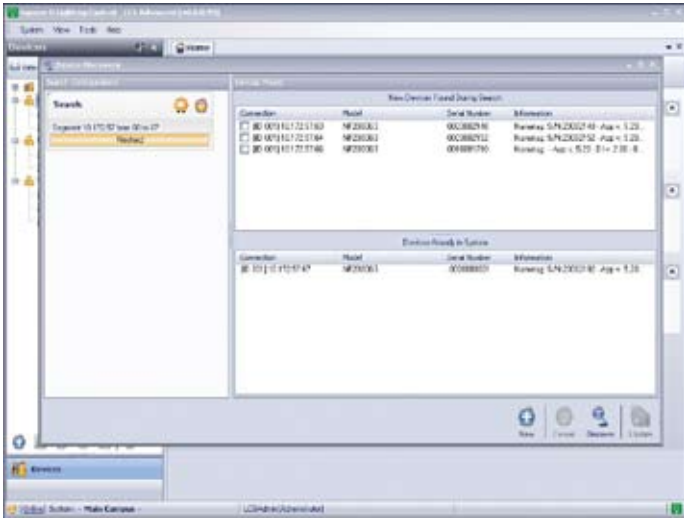
Windows XP® Service Pack 2, Windows Vista®, Windows 7®

Required Software

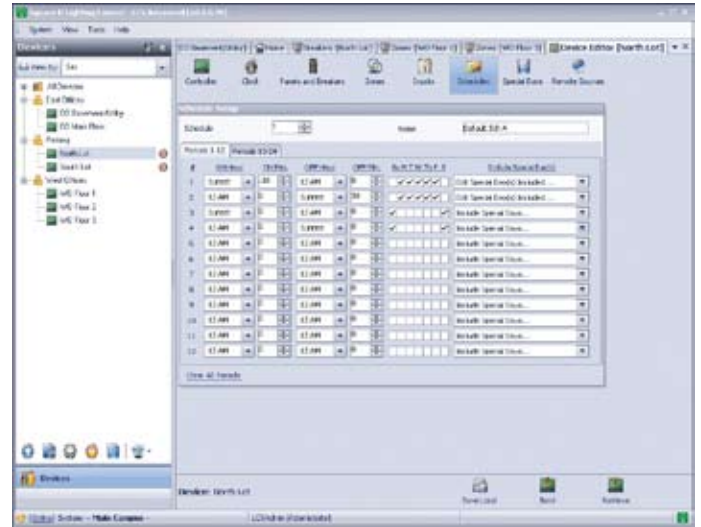
The software requires the following Microsoft software applications to be installed: .NET Framework v2.0, Windows Installer v3.1 or later, Internet Explorer v6.0 or later

> Order Information

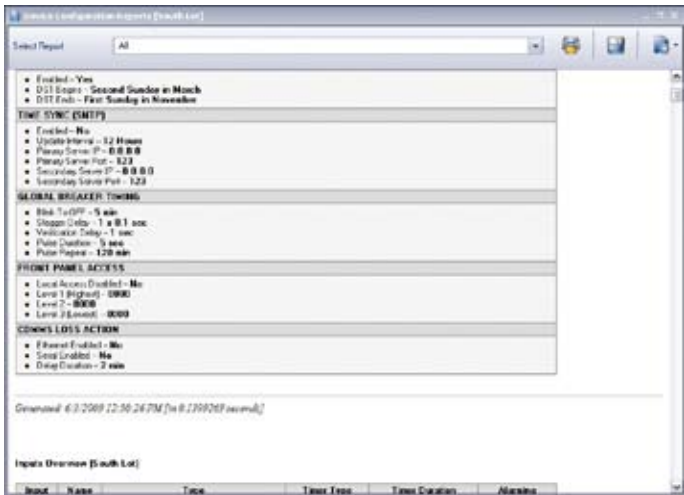
Description	Catalog Number
LCS Basic (CD)	LCSBASIC
Full upgrade from PCS to LCS Basic (CD)	LCSBASICUP
LCS Advanced (CD)	LCSADVANCED
Full upgrade from PCS to LCS Advanced (CD)	LCSADVANCEDUP



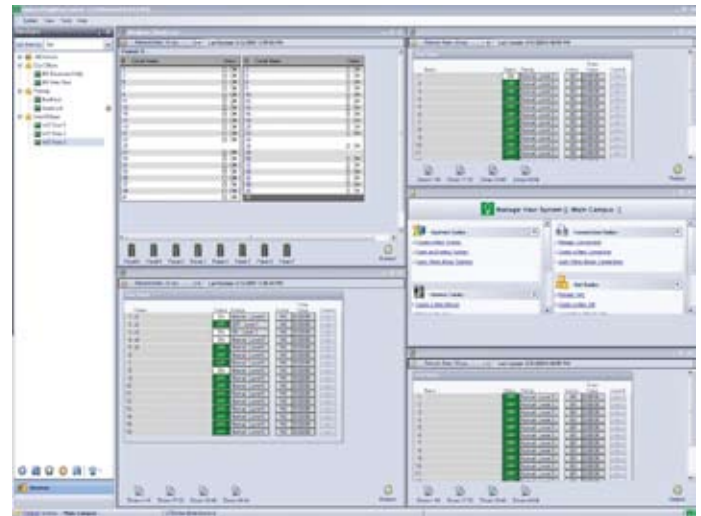
LCS automatically identifies all Powerlink system components for a real-time display of the entire network, making adjustments or reporting fast and simple.



The LCS Schedule Configurator feature makes daily schedules and commands fast, simple and intuitive.



Enjoy the convenience of customized reporting and real-time monitoring tailored to individual needs.



See multiple controllers, live status on the same screen.

➤ Contact your local sales representative for ordering information.

Visit www.schneider-electric.us for more information on other products, applications, services and system solutions.

Schneider Electric - USA, Inc.

320 Tech Park Drive Suite 100
 LaVergne, TN 37086
 Tel: 1-888-778-2733
www.schneider-electric.us

Powerlink and Modbus are trademarks or registered trademarks of Schneider Electric or its affiliates. Other marks used herein may be the property of their respective owners.

©2010 Schneider Electric. All rights reserved.