

# Lighting control

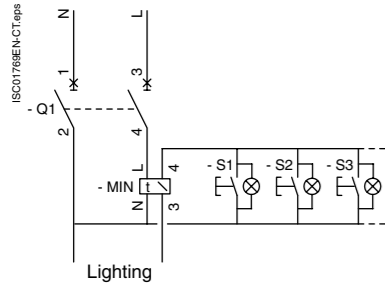
## How to create a lighting time delay for a stairway?

**The MIN timer (PBs connected to neutral) is used to light a stairway for 7 minutes:**

- press one of the illuminated pushbuttons to start the time delay,
- press again during lighting to restart the 7 minute time delay,
- maximum power controlled:
  - 230 V LV halogen or incandescent lighting: 2300 W,
  - fluorescent lighting not corrected or serial-corrected: 2300 VA,
  - fluorescent lighting corrected in parallel (70  $\mu$ F): 1300 VA,
  - fluorescent tubes with electronic ballast 300 VA,
  - fluocompact lamps with electronic ballast 9 x 7 W, 6 x 11 W, 5 x 15 W, 5 x 20 W,
  - higher powers or other loads: relay with a iCT contactor.

### Additional information

Total current drawn up by the illuminated push-buttons must be less than 30 mA.



Products used	Qty.	Part no.
2P iC60N	4	
MIN	1	15363

