

Protocol map generation for SCADA engineering

This application note applies to Vamp 50, Vamp 200 and Vamp 300 series

Overview

Information concerning how process data and relay application logic are mapped to communication protocol is essential for configuration of the SCADA system. VAMP relay software supports protocol map generation starting from the firmware version 10.47.

Active protocols on relay communication ports

Mapping information can be displayed for active protocols. In order to determine or change active protocols assigned to the relay communication ports, PROTOCOL CONFIGURATION tab in Vampset is used.

PROTOCOL CONFIGURATION

COMM. OPTIONS

Comm. Option 1	VCM TTL
Comm. Option 2	iEthernet

REMOTE PORT

Remote port protocol	None
-	38400/8N1
Message counter	0
Error counter	0
Timeout counter	0

LOCAL PORT

Local port protocol	None
-	38400/8N1
Message counter	0
Error counter	0
Timeout counter	0

EXTENSION PORT

Extension port protocol	None
-	38400/8N1
Message counter	0
Error counter	0
Timeout counter	0

ETHERNET PORT

Ethernet port protocol	IEC-61850
------------------------	-----------

Protocol mapping information

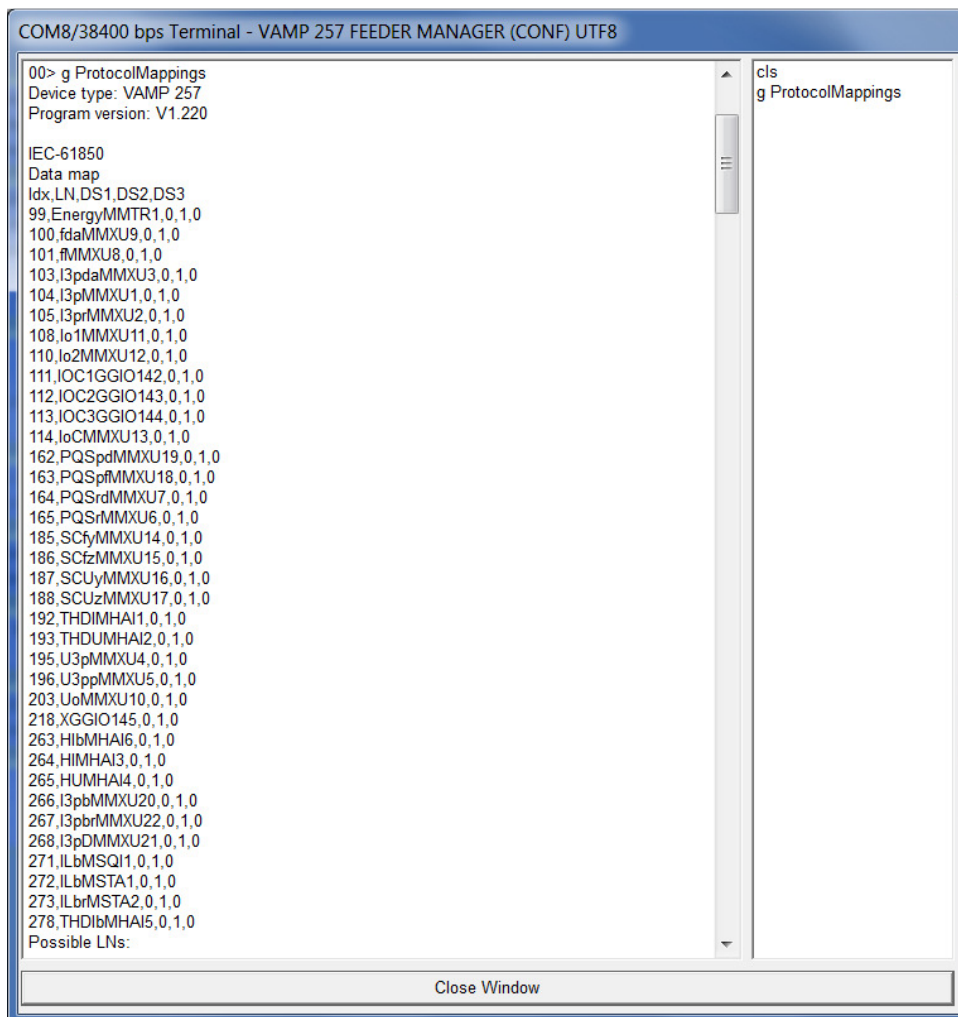
Mapping information can be displayed in Vampset terminal window by calling:

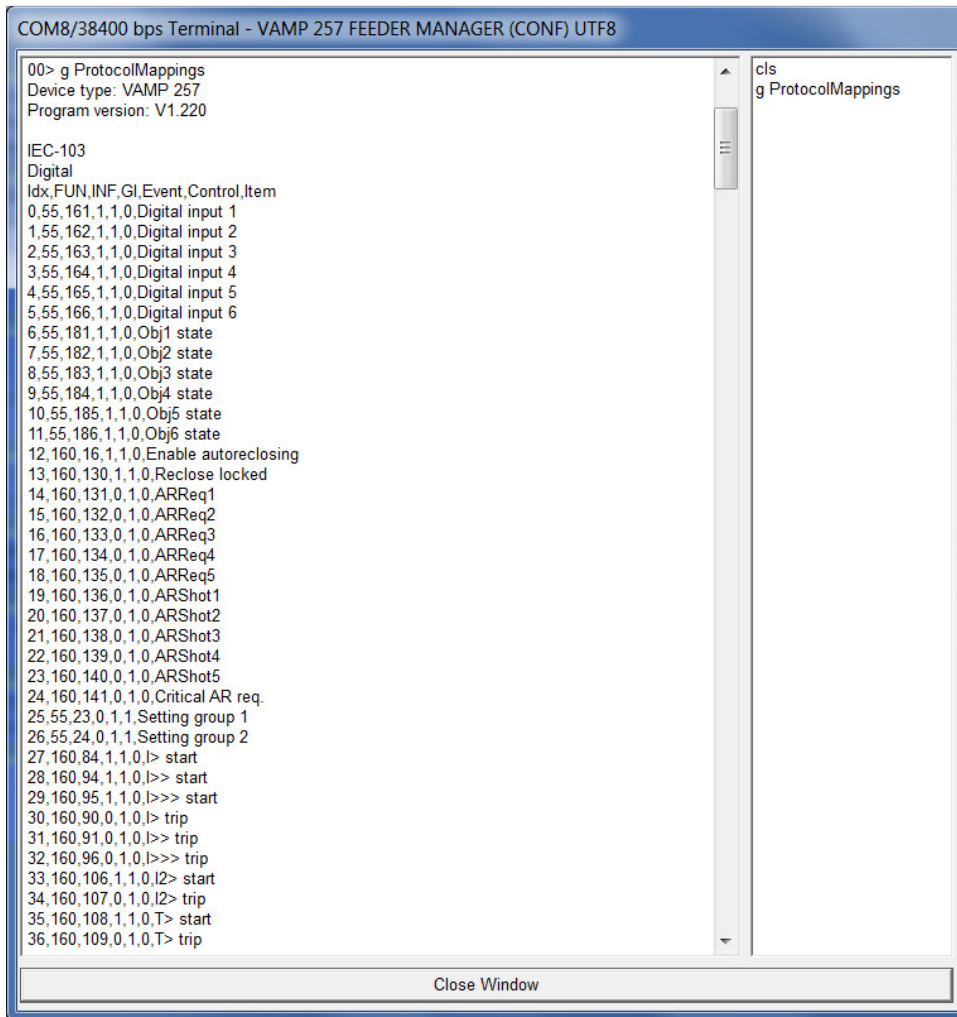
Protocol Mappings

Mapping information starts with a header containing device type and firmware program version.

For each active protocol there comes its name followed by the section “Data map”. The first line provides comma separated descriptions of all fields of the map. This is followed by comma separated mapping information.

If not all available data are mapped to the communication protocol then after the “Data map” section there comes an additional section “Possible data items” listing the remaining data not accessible to the communication in the present relay configuration.





Schneider Electric

35 rue Joseph Monier
92506 Reuil-Malmaison
FRANCE

Phone: +33 (0) 1 41 29 70 00
Fax: +33 (0) 1 41 29 71 00

www.schneider-electric.com

Publishing: 4/2013

© 2012 Schneider Electric Industries SAS - All rights reserved.
Electrical equipment should be installed, operated, serviced,
and maintained only by qualified personnel. No responsibility
is assumed by Schneider Electric for any consequences
arising out of the use of this material.