

# SmartStruxure Solution

Real simple. Real smart. Real performance.  
Integrated building management



Make the most of your energy<sup>SM</sup>

**Schneider**  
Electric<sup>TM</sup>

# Smart**E**truxure™

Real simple. Real smart. Real performance.



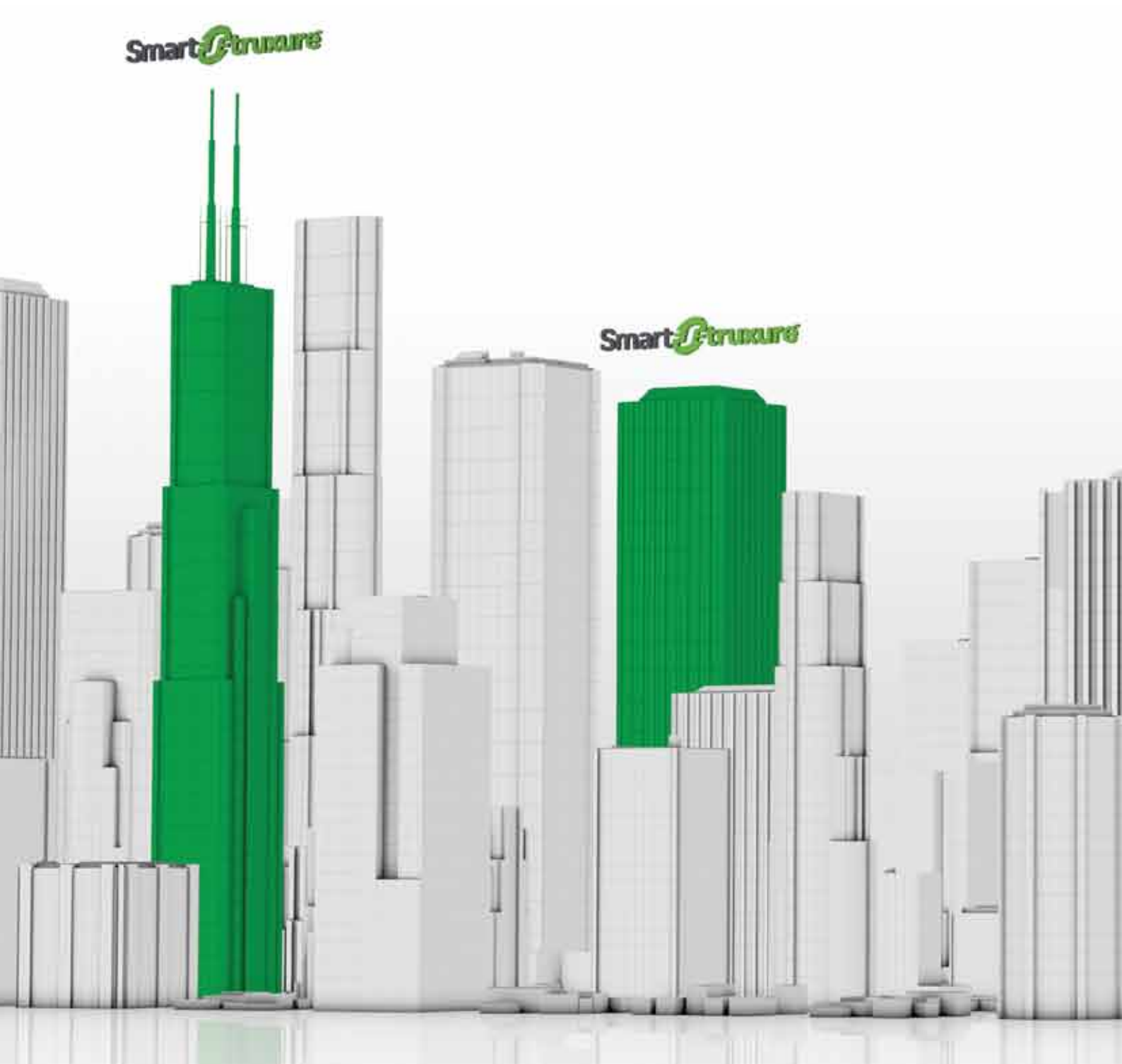
Optimise your energy consumption, maintain a healthy and productive environment, update ageing facilities, and gain anytime, anywhere access to your building systems.



Smart**E**truxure



Smart**E**truxure



# A single solution for your complex needs

SmartStruxure™ solution enables you to monitor, measure, and optimise your building's performance throughout its life cycle – saving you money. You can't control what you don't measure. SmartStruxure solution, powered by StruxureWare™ Building Operation software, facilitates the exchange and analysis of data from energy, lighting, fire safety, and HVAC.

## Real simple

Your job is complicated – SmartStruxure solution helps you simplify by delivering the right information when, where, and how you want it.

- > Personalised user interface
- > Anytime, anywhere access
- > Simplified day-to-day operations

## Real smart

SmartStruxure solution is a smart investment for today's needs and tomorrow's challenges. As a key part of your building's infrastructure, SmartStruxure solution delivers one-click integration across your enterprise.

- > Scalable system based on open protocols
- > Key component of an integrated enterprise
- > IT-friendly and secure

## Real performance

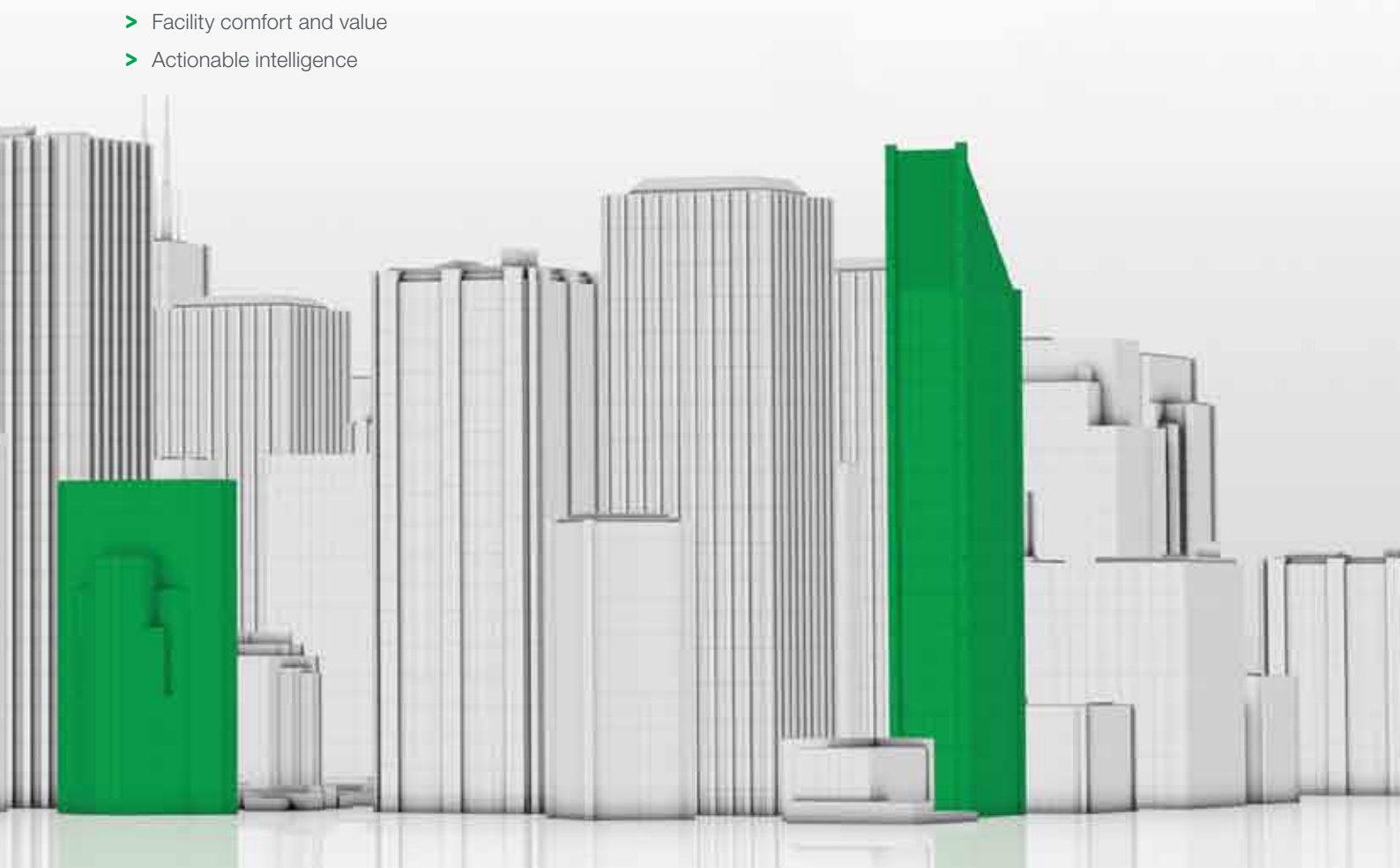
SmartStruxure solution delivers an efficient enterprise by optimising your building's performance and saving you up to 30 percent or more of your energy costs.

- > Optimised building performance
- > Facility comfort and value
- > Actionable intelligence

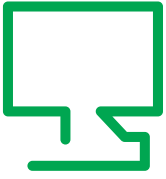
Save up to

# 30%

of your energy costs  
with a SmartStruxure  
solution from  
Schneider Electric™.



## User-friendly system



### Personalise your workspace

The attractive, modern interface can be organized by individual users to suit their needs. These preferences follow the users regardless of where they log on. Information accessible to each user, such as graphics and alarms, can be managed at the job function or individual level for added security and accountability.

### Access your information anytime, anywhere

SmartStruxure solution delivers 24/7 access to your building's information with WebStation, a fully functioning user interface that runs on a standard Web browser. Our robust mobile applications provide a portable, simplified user interface that enables you to view information and manage your facility on the go.

### Simplify day-to-day operations

User-friendly functionality, including drag-and-drop trending, one-click reporting, interactive graphics, calendar-like scheduling, and easy-to-use alarms, lets you focus on optimising your buildings, rather than just running them.

## A smart investment



### Ready today, prepared for the future

Its unique, scalable architecture makes SmartStruxure solution ideal for any integrated building management application. It provides native support for LON®, BACnet®, Modbus, Web Services, and Schneider Electric EcoStruxure™ Web Services for seamless integration with existing and emerging technologies.

### Boost your facility's IQ

A SmartStruxure solution breaks down traditional information silos and monitors and manages your building's systems on one network — across your enterprise. It can easily incorporate data from outside your facility, such as weather and utility costs, to further ensure your building is running at maximum efficiency.

### IT-friendly and secure

SmartStruxure solution can withstand the most malicious attacks on your IP network. Its distributed intelligence provides fault-tolerance and keeps your building systems up and running.

# Good for the planet – great for your bottom line

## Optimise your building's performance

Realise significant financial savings throughout the installation, operation, and maintenance of your facility. Further savings can be achieved by adding advanced services, such as building analytics and optimisation.

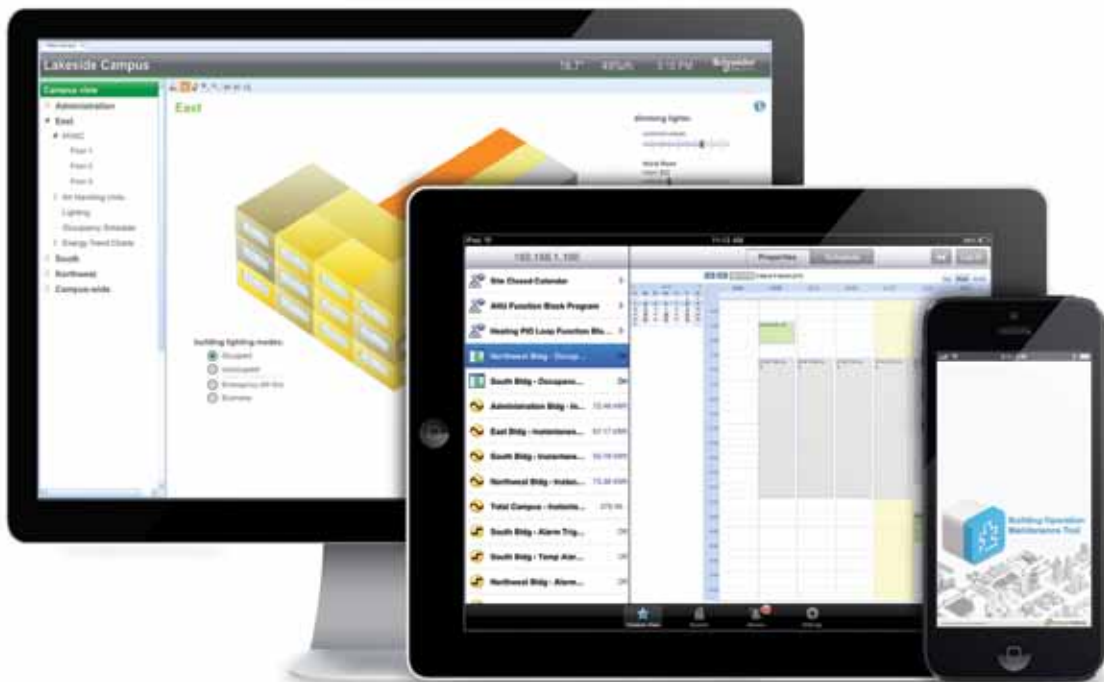


## Maintain facility comfort and increase facility value

A SmartStruxure solution creates a healthy, sustainable environment within your facility that attracts and retains employees, and can ensure that your facility meets government efficiency requirements and/or qualifies for tax-based incentives.

## Turn data into decisions

Out-of-the-box reporting and trending tools make it easy to turn massive amounts of data into actionable intelligence. Dashboards allow you to visualise enterprise efficiency and engage building occupants when displayed in your reception.



A personalised blueprint for  
your building's efficiency



# Our vision

Schneider Electric has a vision of a world where we all can achieve more while using less of our resources. Since buildings consume more electricity and fossil fuels than any other sector, we can play a vital role in reducing energy consumption and greenhouse gas emissions while saving our customers time and money.

## Shop floor to top floor visibility

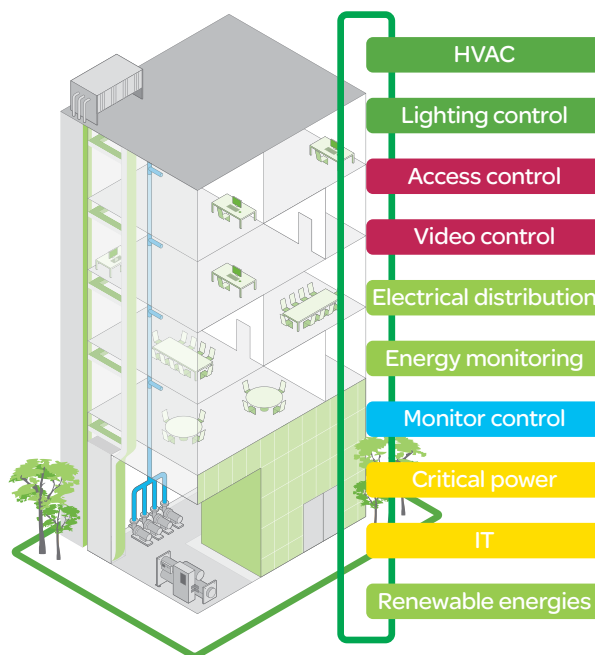
StruxureWare software applications and suites by Schneider Electric is a unique platform that delivers visibility into energy and resource use across an organization. StruxureWare software encompasses powerful software applications that are unified across three levels to maximise efficiency:

- > Enterprise level: C-level executives can drive their sustainability strategies effectively by evaluating and selecting scenarios that meet financial, regulatory, and business objectives.
- > Operations level: Functional managers can analyse and optimise operations, energy, and assets on an enterprise-wide or site-specific basis.
- > Control level: Users, whether on-site or remote, can control process performance, ensure business continuity, and track energy consumption in real time.

StruxureWare software allows users to measure and manage data from shop floor to top floor, delivering one version of the truth that is accurate and actionable. Companies can conserve enterprise resources, optimise business performance, and manage an overall sustainability strategy proactively and effectively.

## Take efficiency to the next level with EcoStruxure architecture

EcoStruxure architecture is the Schneider Electric approach to creating intelligent energy management systems. The SmartStruxure solution represents the building management domain of expertise within the EcoStruxure architecture. An EcoStruxure architecture connects five domains of expertise — power, data centres, process and machines, building management, and physical security — within an open and flexible technology architecture that delivers significant savings on capital and operational expenses.



# 170+ years of energy innovation

As the global specialist in energy management, Schneider Electric has more than 170 years of innovation and experience in energy and business, and offers customers five distinct advantages other companies cannot, specifically:

- > Schneider Electric is global. With a presence in well over 100 countries either directly or through partners, Schneider Electric is able to deliver consistent answers and added value to its customers, both locally and internationally.
- > Schneider Electric is innovative. To meet the challenges of the future, Schneider Electric is focused on developing new technologies and services that will drive intelligence, efficiency, and connectivity from the device up to “big data” management.
- > Schneider Electric is a solution provider. With a base of best-in-class technology, Schneider Electric has developed compatibility and communication across all of its systems, enabling it to deliver integrated hardware and software solutions through EcoStruxure architecture and StruxureWare software applications and suites.
- > Schneider Electric is green. With a true mind-set of sustainable development, Schneider Electric is committed to having minimum impact on the environment, both with the company's CO<sup>2</sup> footprint and with the products and solutions it produces.
- > Schneider Electric is reliable. The quality of Schneider Electric products, services, and solutions, coupled with interactions from sales, marketing, supply chains, and customer service, enables customers to have complete confidence in working with Schneider Electric.

## About Schneider Electric

### 23.9

billion € sales in 2012

### 41%

of sales in new economies

### 140,000+

people in 100+ countries

### Diversified end markets



Utilities & Infrastructure



Industry & Machines



Data Centres & Networks



Buildings



Residential



Visit [www.schneider-electric.com/uk](http://www.schneider-electric.com/uk) or contact your local representative to learn more about how you can save up to 30 percent on your energy costs .

#### Schneider Electric

Smisby Road  
Ashby-de-la-Zouch  
Leicestershire  
LE65 2UG  
Tel. +44(0) 1530 417733  
[www.schneider-electric.com/uk](http://www.schneider-electric.com/uk)

**Schneider**  
Electric™