

871DO-C Series Dissolved Oxygen Sensors

Style B

MODEL CODES

<u>Description</u>	<u>Model</u>
<u>Dissolved Oxygen Sensor</u>	871DO
 <u>Membrane</u> Composite membrane	-C
 <u>Optional Selections</u> Nonstandard length integral cable, terminated in stripped and tinned leads, 150 m (500 ft) maximum. Specify length.	-3
Nonstandard length integral cable, terminated in male connector, 150 m (500 ft) maximum. Specify length. (a)	-5
Standard length 9 m (30 ft) integral cable, terminated in male connector. (a)	-7
Examples:871DO-C-7 871DO-C-5; 25 m (82 ft) cable length required	

(a) Requires patch cord; see page 3.

Give instrument Model Code when ordering.
*Parts preceded by an asterisk are recommended spare parts.
See Recommended Spare Parts Summary section for quantities.

TO ORDER PARTS, CALL 1-866-746-6477.

PARTS

Figure 1. 871DO-C Dissolved Oxygen Sensor

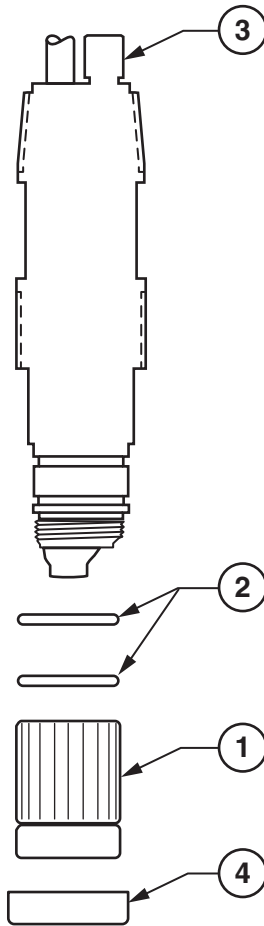


Table 1. Parts for Figure 1

Item	Part Name
1	Membrane Cap Assembly
2	O-Ring
3	Vent Cap
4	Protective Cap

Table 2. Replacement Membrane Cap Assembly Kits (See Figure 1)

Kit Part Number	Contents of Kit		
	Item	Description	Quantity
*BS807RU	1	Membrane Cap Assembly	1
	2	O-Ring	2
	3	Vent Cap	1
	4	Protective Cap	1
	–	Electrode Polishing Disc	1
	–	50 ml. Bottle of Electrolyte with MSDS (a)	1
	–	Instruction Document	1
*BS807RV	1	Membrane Cap Assembly	3
	2	O-Ring	6
	3	Vent Cap	3
	4	Protective Cap	3
	–	Electrode Polishing Disc	3
	–	50 ml. Bottle of Electrolyte with MSDS (a)	3
	–	Instruction Document	1

(a) MSDS = Material Safety Data Sheet

Table 3. Junction Box and Extension Cable

Description	Part Number
Junction Box: Provides watertight protection of NEMA Type 4. Used to increase distance between sensor and analyzer by allowing the connection of extension cable.	0051052
Cable, Extension Wire: Not terminated, not dressed. Maximum separation between 871DO-C Sensor and 873DO Analyzer is 150 m (500 ft).	P0170UU
Patch Cords: One end terminated in female connector; other end terminated in stripped and tinned leads. For use with sensors with Optional Selection Codes -5 and -7. Standard length, 3 m (10 ft) Nonstandard length, per sales order, 150 m (500 ft) maximum	BS806JY BS806JT
Sensor Simulator: Terminated in male connector; used with Patch Cord above to simulate 871DO-C Sensor and verify proper analyzer function.	BS806KM

RECOMMENDED SPARE PARTS SUMMARY

Figure Number	Item Number	Part Number	Part Name	Number of Parts Recommended (per year) for		
				1 Installation	5 Installations	20 Installations
1	-	BS807RU	Single Membrane Cap Assembly Kit	4	20	80
		BS807RV	3-Membrane Cap Assembly Kit	2	7	27