

# Instakits

## Quick Selection Guide

Now factory custom built starters can be assembled from your local distributor's stock



Pre-Wired IEC Enclosed Magnetic Starters

### Save time and money with Instakits...

The Instakits line of IEC magnetic starters allows factory-wired starters to be conveniently assembled from your local distributor's stock.

Instakits starters are completely pre-wired to a universal connector, which allows for quick installation of plug-in options. Choose from a wide selection of push-button kits, control transformers and user-friendly connectors for reliable remote control.

#### Instakit sinclude:

- Type 1 general purpose or type 12 dust tight enclosures
- Maintenance-free TeSys — Model D, IEC contactor
- Class 10 or 20 overload relay with manual or auto reset
- Common operator interface kits for type 1 or 12 enclosures
- Provision for a control transformer kit in same size enclosure


#### Across-the-line

- Compact space saver design
- Easy component access on shallow base with removable cover
- Conduit entry knockouts located on all four sides
- Padlock provision

#### Combination

- Fusible type featuring type 2 coordination
- Breaker type featuring Square D brand, PowerPact MCP
- Flange-mounted switch or breaker mechanism
- Easy component access with hinged and removable door

### Base Instakits starters are available in a wide range of styles or as a factory



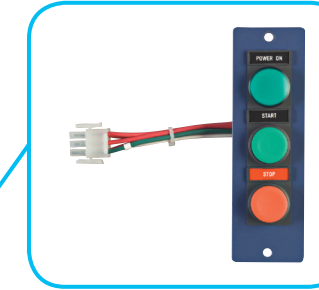
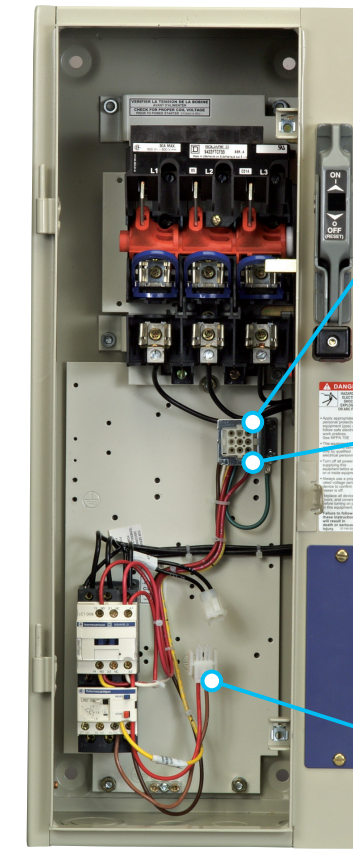
#### Base InstaKits

- Single- or three-phase
- Non-reversing or reversing
- Combination or non-combination (fuse or breaker) up to 60HP at 600V



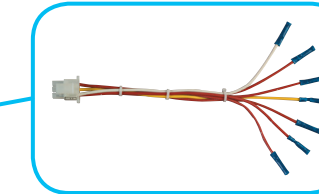
#### Factory Order

- Large horsepower
- Multi-speed
- Reduced voltage
- Custom control schemes



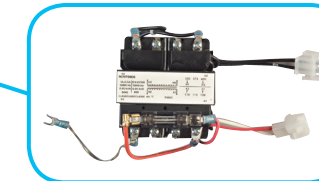
#### Local control features

- Pre-wired, ready-to-operate Instakits
- Pushbuttons, pilot lights and selector switches
- One, two or three pilot devices
- Instakits rated EEMAC type 12 when used with type 12 enclosures



#### Adapters

Local and Remote control adapters allow easy connection to external signals as well as cover mounted pilot devices. Please see your local Schneider Distributor for more information.



#### Plug-in transformers

- Pre-wired and ready to install
- Fits in same size enclosure
- Control block and fuse included
- Costs 50% less than a factory-assembled plug-in transformer

It's as easy as ...

- 1 Wire to your power source
- 2 Wire to your motor
- 3 Plug in your buttons

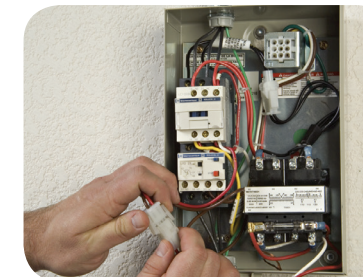


### How to get started ... Instantly

- 1 Wire L1, L2, L3, to power source and T1, T2, T3 to motor.



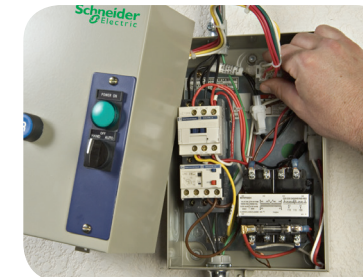
- 2 When required, mount transformer and plug it in.



- 3 Choose from a complete line of Instakits and mount it on starter cover.



- 4 Plug Instakits into the terminal block and put the cover in place.



- 5 Your Instakits starter is ready to operate.



## Instakits starter quick selection guide

3 Phase – Non reversing					Non combination		Combination fusible		Combination circuit breaker	
Maximum horsepower rating				Type 1	Type 12	Type 1	Type 12	Type 1	Type 12	
208V	230V	460V	575V	Catalogue number	Catalogue number	Catalogue number	Catalogue number	Catalogue number	Catalogue number	
Hp	Hp	Hp	Hp							
2	2	5	7.5	LE1D093A62OG70	LE1D093A72OG70	LE1D098B62OG70	LE1D098B72OG70	LE1D099E62OG70	LE1D099E72OG70	
3	3	7.5	10	LE1D123A62OG70	LE1D123A72OG70	LE1D128B62OG70	LE1D128B72OG70	LE1D129E62OG70	LE1D129E72OG70	
5	5	10	15	LE1D183A62OG70	LE1D183A72OG70	LE1D188B62OG70	LE1D188B72OG70	LE1D189E62OG70	LE1D189E72OG70	
7.5	7.5	15	20	LE1D253A62OG70	LE1D253A72OG70	LE1D258C62OG70	LE1D258C72OG70	LE1D259E62OG70	LE1D259E72OG70	
10	10	20	25	LE1D323A62OG70	LE1D323A72OG70	LE1D328C62OG70	LE1D328C72OG70	LE1D329F62OG70	LE1D329F72OG70	
10	10	30	30	LE1D403A62OG70	LE1D403A72OG70	LE1D408C62OG70	LE1D408C72OG70	LE1D409F62OG70	LE1D409F72OG70	
15	15	40	40	LE1D503A62OG70	LE1D503A72OG70	LE1D508D62OG70	LE1D508D72OG70	LE1D509G62OG70	LE1D509G72OG70	
20	20	40	50	LE1D653A62OG70	LE1D653A72OG70	LE1D658D62OG70	LE1D658D72OG70	LE1D659G62OG70	LE1D659G72OG70	
25	30	60	60	LE1D803A62OG70	LE1D803A72OG70	LE1D808E62OG70	LE1D808E72OG70	LE1D809G62OG70	LE1D809G72OG70	

3 Phase – Reversing					Non combination		Combination fusible		Combination circuit breaker	
Maximum horsepower rating				Type 1	Type 12	Type 1	Type 12	Type 1	Type 12	
208V	230V	460V	575V	Catalogue number	Catalogue number	Catalogue number	Catalogue number	Catalogue number	Catalogue number	
Hp	Hp	Hp	Hp							
2	2	5	7.5	LE2D093A62OG70	LE2D093A72OG70	LE2D098B62OG70	LE2D098B72OG70	LE2D099E62OG70	LE2D099E72OG70	
3	3	7.5	10	LE2D123A62OG70	LE2D123A72OG70	LE2D128B62OG70	LE2D128B72OG70	LE2D129E62OG70	LE2D129E72OG70	
5	5	10	15	LE2D183A62OG70	LE2D183A72OG70	LE2D188B62OG70	LE2D188B72OG70	LE2D189E62OG70	LE2D189E72OG70	
7.5	7.5	15	20	LE2D253A62OG70	LE2D253A72OG70	LE2D258C62OG70	LE2D258C72OG70	LE2D259E62OG70	LE2D259E72OG70	
10	10	20	25	LE2D323A62OG70	LE2D323A72OG70	LE2D328C62OG70	LE2D328C72OG70	LE2D329F62OG70	LE2D329F72OG70	
10	10	30	30	LE2D403A62OG70	LE2D403A72OG70	LE2D408C62OG70	LE2D408C72OG70	LE2D409F62OG70	LE2D409F72OG70	
15	15	40	40	LE2D503A62OG70	LE2D503A72OG70	LE2D508D62OG70	LE2D508D72OG70	LE2D509G62OG70	LE2D509G72OG70	
20	20	40	50	LE2D653A62OG70	LE2D653A72OG70	LE2D658D62OG70	LE2D658D72OG70	LE2D659G62OG70	LE2D659G72OG70	

1 Phase – Non reversing				Non combination	
Maximum horsepower rating		Type 1	Type 12		
120V	240V	Catalogue number	Catalogue number		
Hp	Hp				
0.3	1	LESD093A62OG70	LESD093A72OG70		
0.5	2	LESD123A62OG70	LESD123A72OG70		
1	3	LESD183A62OG70	LESD183A72OG70		
2	3	LESD253A62OG70	LESD253A72OG70		
2	5	LESD323A62OG70	LESD323A72OG70		
3	5	LESD403A62OG70	LESD403A72OG70		
3	7.5	LESD503A62OG70	LESD503A72OG70		
5	10	LESD653A62OG70	LESD653A72OG70		
7.5	15	LESD803A62OG70	LESD803A72OG70		

**Ordering example:** To select a 10HP, 600V FVNR starter complete with hand off auto, full voltage pilot light and 600-120V control transformer, order the following components:  
 Base starter – LE1D123A62OG70; HOA & PL kit – LA9CA06UT;  
 CCT kit – LA9TD32X; Overload relay – LRD16.  
**Note:** All starters listed are complete with 120VAC coils. For other control voltages, please consult your local Schneider Electric distributor.

Control circuit transformer						
VA rating	For LE1 starters		Catalogue number			
50VA	D09 - D32		LA9TFD32*			
100VA	D40 - D80		LA9TFD80*			
Voltage	Primary					
	600V	480V	240V	208V	120V	
Secondary	120V	X	T	M	L	–
	24V	A	B	C	D	E

**Note:** Replace \* with suffix from above table.

Field installable operator interface kits		
One operator		
Description	Nameplate	Catalogue number
Push Button (Double Touch)	I-O	LA9CA06IO
2 Position Selector Switch	OFF-ON	LA9CA06DT
3 Position Selector Switch	HAND-OFF-AUTO	LA9CA06ET
Pilot Light Full Voltage	POWER ON	LA9CA06ST
Pilot Light Transformer	POWER ON	LA9CA06FT*
Pilot Light LED	POWER ON	LA9CA16ST*

3 Phase motor horsepower – Type 2 coordination fuse selection						
200V	230V	460V	575V	Starter	Overload relay	SHAWMUT fuses (max)
Hp	Hp	Hp	Hp			Class J
Class 10 with connection by screw clamp terminals						
–	–	–	1/2	LE*D09	LRD05	AJT 1.5
–	–	1/2	3/4	LE*D09	LRD06	AJT 2
–	–	3/4	–	LE*D09	LRD06	AJT 2
1/2	1/2	1	1	LE*D09	LRD07	AJT 5
–	–	–	1 1/2	LE*D09	LRD07	AJT 5
3/4	3/4	1 1/2	2	LE*D09	LRD08	AJT 5
–	–	2	3	LE*D09	LRD08	AJT 5
1	1	3	–	LE*D09	LRD10	AJT 20
1 1/2	1 1/2	–	5	LE*D09	LRD12	AJT 20
2	2	–	–	LE*D09	LRD12	AJT 20
–	–	5	–	LE*D09	LRD14	AJT 20
3	3	7 1/2	7 1/2	LE*D12	LRD16	AJT 20
–	–	–	10	LE*D18	LRD16	AJT 20
5	5	10	–	LE*D18	LRD21	AJT 25
–	–	–	15	LE*D25	LRD21	AJT 25
–	7 1/2	15	–	LE*D25	LRD22	AJT 35
–	–	15	15	LE*D32	LRD22	AJT 40
–	–	–	20	LE*D32	LRD22	AJT 40
7 1/2	10	20	25	LE*D40	LRD332	AJT 50
–	–	25	–	LE*D40	LRD340	AJT 60
10	–	30	30	LE*D40	LRD340	AJT 60
15	15	30	40	LE*D50	LRD350	AJT 70
–	–	40	–	LE*D50	LRD365	AJT 70
20	20	40	50	LE*D65	LRD365	AJT 100
–	–	–	60	LE*D80	LRD3361	AJT 100
25	25	60	–	LE*D80	LRD3363	AJT 110
–	30	–	–	LE*D80	LRD3363	AJT 110

Field installable operator interface kits (cont'd)		
Two operators		
Description	Nameplate	Catalogue number
2 Push Buttons	START / STOP	LA9CA06GT
2 Position Selector Switch + Full Voltage Pilot	OFF-ON POWER ON	LA9CA06WT
2 Position Selector Switch + Transformer Pilot	OFF-ON POWER ON	LA9CA06HT*
2 Position Selector Switch + LED Pilot	OFF-ON POWER ON	LA9CA06WT*
3 Position Selector Switch + Full Voltage Pilot	HAND-OFF-AUTO POWER ON	LA9CA06UT
3 Position Selector Switch + Transformer Pilot	HAND-OFF-AUTO POWER ON	LA9CA06JT*
3 Position Selector Switch + LED Pilot	HAND-OFF-AUTO POWER ON	LA9CA16UT*

Overload relay selection		
Catalogue number	Relay setting range	For Use with Starters LE***
Class 10 with connection by screw clamp terminals		
LRD01	0.10 to 0.16 A	D09 to D32
LRD02	0.16 to 0.25 A	D09 to D32
LRD03	0.25 to 0.40 A	D09 to D32
LRD04	0.40 to 0.63 A	D09 to D32
LRD05	0.63 to 1A	D09 to D32
LRD06	1 to 1.7 A	D09 to D32
LRD07	1.6 to 2.5 A	D09 to D32
LRD08	2.5 to 4 A	D09 to D32
LRD10	4 to 6 A	D09 to D32
LRD12	5.5 to 8 A	D09 to D32
LRD14	7 to 10 A	D09 to D32
LRD16	9 to 13 A	D12 to D32
LRD21	12 to 18 A	D18 to D32
LRD22	16 to 24 A	D25 to D32
LRD32	23 to 32 A	D25 to D32
LRD35	30 to 38 A	D32
LRD325	17 to 25 A	D40 to D65
LRD332	23 to 32 A	D40 to D65
LRD340	30 to 40 A	D40 to D65
LRD350	37 to 50 A	D40 to D65
LRD365	48 to 65 A	D40 to D65
LRD3361	55 to 70 A	D80
LRD3363	63 to 80 A	D80

Field installable operator interface kits (cont'd)					
Three operators					
Description	Nameplate	Catalogue number			
3 Push Buttons	FORWARD / REVERSE / STOP	LA9CA06LT			
3 Push Buttons	FAST / SLOW / STOP	LA9CA06MT			
2 Position Selector Switch + 2 Transformer Pilots (480 or 680V)	OFF-ON RUN / TRIP	LA9CA06PT*			
2 Position Selector Switch + 2 LED Pilots (24, 120 or 240V)	OFF-ON RUN / TRIP	LA9CA16PT*			
3 Position Selector Switch + 2 Transformer Pilots (480 or 680V)	HAND-OFF-AUTO RUN / TRIP	LA9CA06QT*			
3 Position Selector Switch + 2 LED Pilots (24, 120 or 240V)	HAND-OFF-AUTO RUN / TRIP	LA9CA16QT*			
<b>(volts)</b>	24V	120V	208/240V	480V	600V
<b>Code</b>	B	G	M	T	X

\* Add the appropriate suffix to the catalogue number.  
**Note:** LED type are only available for voltage codes: B, G & M. Above catalogue numbers specify green pilot lights as standard. Dual pilot lights are green and amber. For other colours please consult the catalogue.

## Setting the standard

Schneider Electric has been perfecting Instakits motor starters since 1989 and is the number one choice of contractors and end users. They've come to rely on our superior design, engineering and efficiency. We know pre-wired motor starters better than anyone else because we invented the concept with Instakits.

## Save time. Save money. Save frustration.

Our Instakits motor starters are simply one of the most flexible products on the market today.

## Anything else is a compromise.

For more information on Instakits call your Schneider Electric sales representative or local authorized distributor, or visit [www.schneider-electric.ca](http://www.schneider-electric.ca)

Schneider Electric Canada  
 5985 McLaughlin Rd  
 Mississauga, Ontario L5R 1B8  
 Telephone: (905) 366-3999  
[www.schneider-electric.com/ca](http://www.schneider-electric.com/ca)