

**NOTES:**

1. INSTALLATION SHALL COMPLY WITH ALL APPLICABLE NATIONAL AND LOCAL CODES.
2. SEE PRODUCT DOCUMENTATION FOR FURTHER INFORMATION.
3. FOR ADDITIONAL DETAILS REFER TO DRAWINGS FOR INDIVIDUAL COMPONENTS.

THIS DRAWING AND SPECIFICATIONS HEREIN ARE THE PROPERTY OF SCHNEIDER ELECTRIC AND SHALL NOT BE COPIED, REPRODUCED OR USED IN WHOLE OR IN PART, AS THE BASIS FOR THE MANUFACTURE OR SALE OF ITEMS WITHOUT WRITTEN PERMISSION FROM SCHNEIDER ELECTRIC. THIS DRAWING IS BASED UPON LATEST AVAILABLE INFORMATION AND IS SUBJECT TO CHANGE WITHOUT NOTICE.

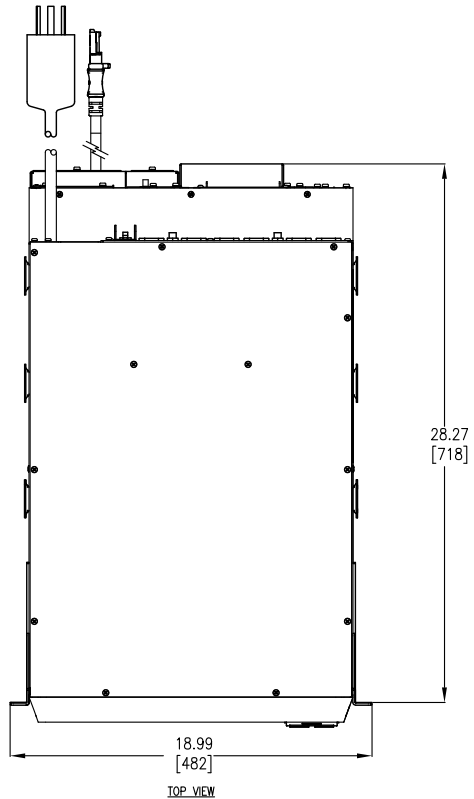


**TITLE:** Smart-UPS Online (SRT) w/ TRANSFORMER  
 SRT10KRMXL1-5KTF2 + SRT192RMBP - RACKMOUNT  
 INPUT: 208/240VAC, (L1+L2+G), HARDWIRE  
 UPS OUTPUT: 208/240VAC, (L1+L2+G), (6) NEMA L6-20R, HAREWIRE  
 TRANSFORMER OUTPUT: 120VAC, (24) 5-20R  
 ISOMETRIC VIEWS

**PROJECT:** STD SUBMITTAL DRAWING **SHEET** 1 OF 4

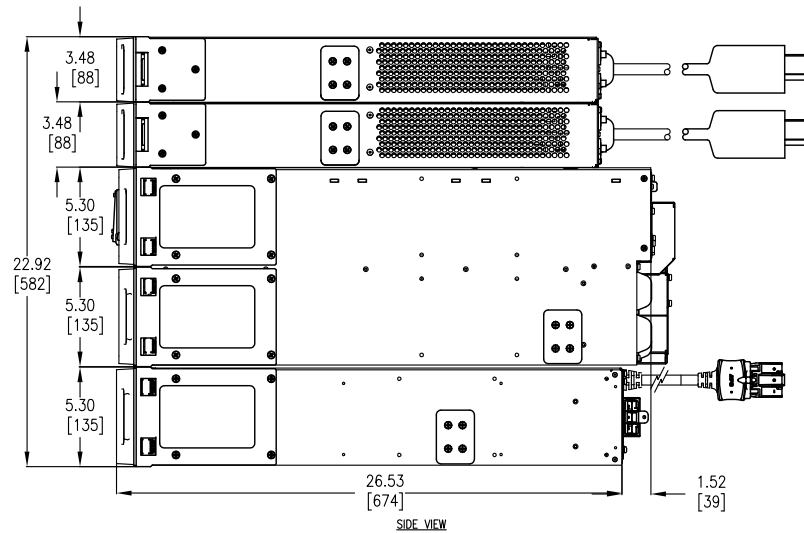
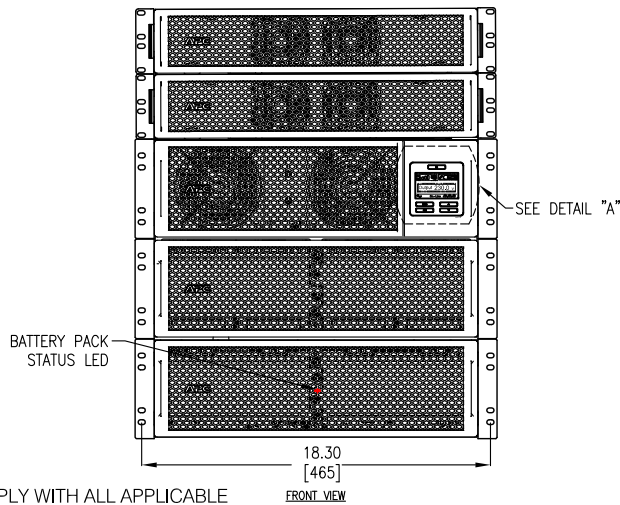
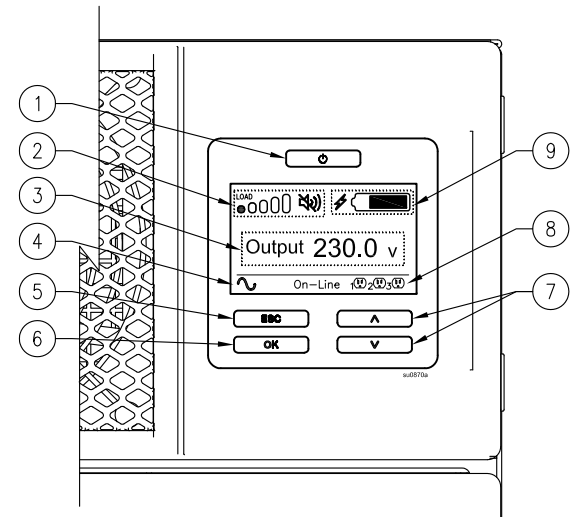
<b>DWG NO:</b> SRT10KRMXL1-5KTF2	<b>REV</b> 0
<b>DRAWN BY:</b> S CUNHA	16JUN2015
<b>ENGINEER:</b> E KOTLYAR	16JUN2015
<b>APPROVED BY:</b> K WHITE/J PRECOPIO	16JUN2015

THIRD ANGLE PROJ



**DISPLAY INTERFACE:**

1. POWER "ON/OFF" BUTTON.
2. LOAD ICON, DISABLE/MUTE AUDIBLE ALARM ICON.
3. UPS STATUS INFORMATION.
4. OPERATION MODE ICONS.
5. "ESCAPE" BUTTON.
6. "OK" BUTTON.
7. "UP/DOWN" BUTTONS.
8. CONTROLLABLE OUTLET GROUP STATUS ICONS.
9. BATTERY STATUS ICONS.



**NOTES:**

1. INSTALLATION SHALL COMPLY WITH ALL APPLICABLE NATIONAL, STATE AND LOCAL CODES.
2. PLEASE REFER TO PRODUCT DOCUMENTATION FOR FURTHER INFORMATION.
3. UNLESS OTHERWISE SPECIFIED, ALL DIMENSIONS ARE IN INCHES [MILLIMETERS].
4. WEIGHT OF UNIT IS 686.20 LBS [312.02 KG].
5. CABLE ENTRY FROM REAR SIDE OF UNIT.

THIS DRAWING AND SPECIFICATIONS HEREIN ARE THE PROPERTY OF SCHNEIDER ELECTRIC AND SHALL NOT BE COPIED, REPRODUCED OR USED IN WHOLE OR IN PART, AS THE BASIS FOR THE MANUFACTURE OR SALE OF ITEMS WITHOUT WRITTEN PERMISSION FROM SCHNEIDER ELECTRIC. THIS DRAWING IS BASED UPON LATEST AVAILABLE INFORMATION AND IS SUBJECT TO CHANGE WITHOUT NOTICE.



**TITLE:** Smart-UPS Online (SRT) w/ TRANSFORMER  
 SRT10KRMXL1-5KTF2 + SRT192RMBP - RACKMOUNT  
 INPUT: 208/240VAC, (L1+L2+G), HARDWIRED  
 UPS OUTPUT: 208/240VAC, (L1+L2+G), (6) NEMA L6-20R, HARDWIRED  
 TRANSFORMER OUTPUT: 120VAC, (24) 5-20R  
 MAIN MECHANICAL

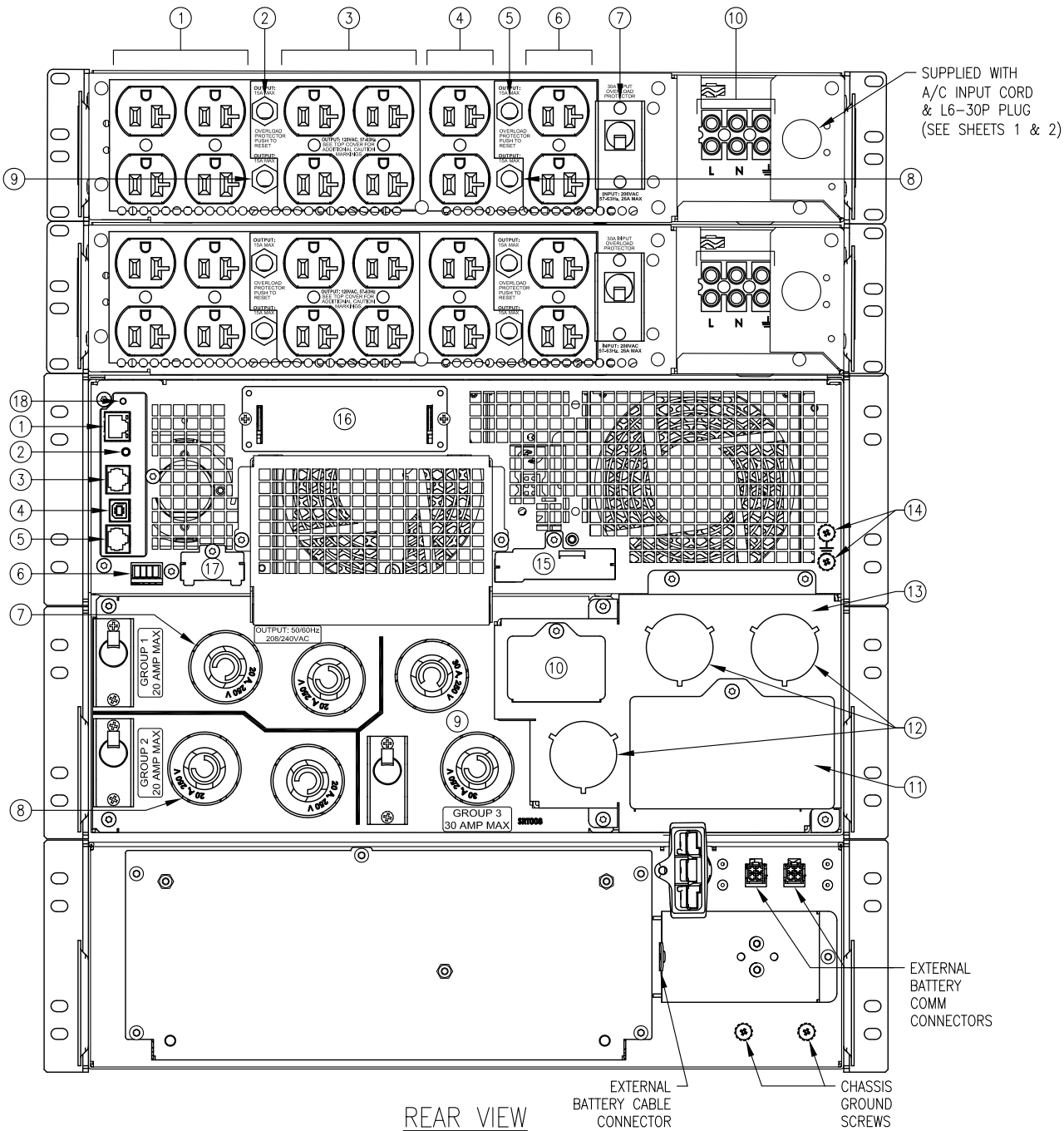
**PROJECT:** STD SUBMITTAL DRAWING **SHEET** 2 OF 4

**DWG NO:** SRT10KRMXL1-5KTF2 **REV** 0

**DRAWN BY:** S CUNHA 16JUN2015 **THIRD ANGLE PROJ**

**ENGINEER:** E KOTLYAR 16JUN2015

**APPROVED BY:** K WHITE/J PRECOPIO 16JUN2015



- SRT5KRMTF:** (NUMBERING PER USER MANUAL)
1. 15A MAXIMUM OUTPUT
  2. OVERLOAD PROTECTOR
  3. 15A MAXIMUM OUTPUT
  4. 15A MAXIMUM OUTPUT
  5. OVERLOAD PROTECTOR
  6. 15A MAXIMUM OUTPUT
  7. INPUT OVERLOAD PROTECTOR
  8. OVERLOAD PROTECTOR
  9. OVERLOAD PROTECTOR
  10. INPUT POWER CORD CONNECTION

- SRT10KRMXL:** (NUMBERING PER OPERATIONS MANUAL)
1. NETWORK PORT
  2. CONSOLE PORT
  3. UNIVERSAL I/O PORT
  4. USB PORT
  5. SERIAL COM
  6. EPO TERMINAL
  7. CONTROLLABLE OUTLET GROUP 1  
[(2) NEMA L6-20R] WITH CIRCUIT BREAKER
  8. CONTROLLABLE OUTLET GROUP 2  
[(2) NEMA L6-20R] WITH CIRCUIT BREAKER
  9. CONTROLLABLE OUTLET GROUP 3  
[(2) NEMA L6-30R] WITH CIRCUIT BREAKER
  10. AC OUTPUT INSPECTION PANEL
  11. AC INPUT INSPECTION PANEL
  12. AC HARDWIRE KNOCKOUTS
  13. HARDWIRE BOX INPUT/OUTPUT
  14. CHASSIS GROUND SCREWS
  15. EXTERNAL BATTERY POWER AND COMMUNICATION CONNECTORS
  16. SMART SLOT
  17. PRL COMM PORT
  18. RESET BUTTON

REAR VIEW

**NOTES:**

1. INSTALLATION SHALL COMPLY WITH ALL APPLICABLE NATIONAL, STATE AND LOCAL CODES.
2. PLEASE REFER TO PRODUCT DOCUMENTATION FOR FURTHER INFORMATION.

THIS DRAWING AND SPECIFICATIONS HEREIN ARE THE PROPERTY OF SCHNEIDER ELECTRIC AND SHALL NOT BE COPIED, REPRODUCED OR USED IN WHOLE OR IN PART, AS THE BASIS FOR THE MANUFACTURE OR SALE OF ITEMS WITHOUT WRITTEN PERMISSION FROM SCHNEIDER ELECTRIC. THIS DRAWING IS BASED UPON LATEST AVAILABLE INFORMATION AND IS SUBJECT TO CHANGE WITHOUT NOTICE.

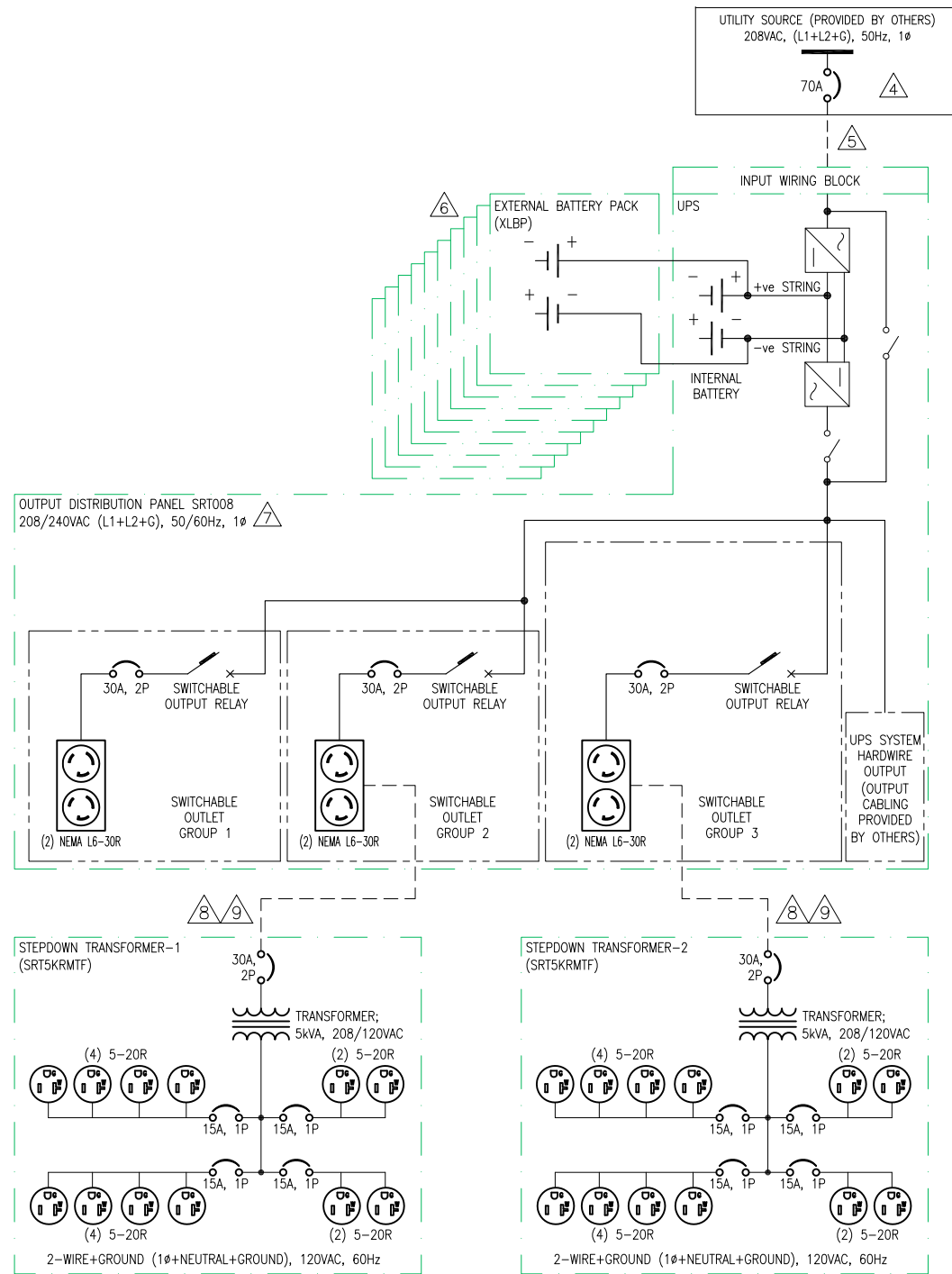


**TITLE:** Smart-UPS Online (SRT) w/ TRANSFORMER  
SRT10KRMXL1-5KTF2 + SRT192RMBP - RACKMOUNT  
INPUT: 208/240VAC, (L1+L2+G), HARDWIRE  
UPS OUTPUT: 208/240VAC, (L1+L2+G), (6) NEMA L6-20R, HARDWIRE  
TRANSFORMER OUTPUT: 120VAC, (24) 5-20R  
REAR VIEW

**PROJECT:** STD SUBMITTAL DRAWING **SHEET** 3 OF 4

**DWG NO:** SRT10KRMXL1-5KTF2 **REV** 0

<b>DRAWN BY:</b> S CUNHA	16JUN2015	THIRD ANGLE PROJ
<b>ENGINEER:</b> E KOTLYAR	16JUN2015	
<b>APPROVED BY:</b> K WHITE/J PRECOPIO	16JUN2015	



**NOTES:**

1. INSTALLATION SHALL COMPLY WITH ALL APPLICABLE NATIONAL, STATE AND LOCAL CODES.
2. PLEASE REFER TO PRODUCT DOCUMENTATION FOR FURTHER INFORMATION.
3. STD SUBMITTAL DRAWING DEPICTS POWER SYSTEM CONNECTIONS AND IS NOT REPRESENTATIVE OF PHYSICAL LAYOUT. PLEASE REFER TO MECHANICAL STD SUBMITTAL DRAWINGS FOR MORE SPECIFIC PHYSICAL DATA.
- △4. UTILITY SOURCE MUST BE NOMINAL 208VAC, (L1+L2+G), 50Hz, 1Ø, PROVIDED BY OTHERS.
- △5. DASHED LINE BETWEEN UTILITY SOURCE AND THE UNIT (-----) REPRESENTS CABLING PROVIDED BY OTHERS.
- △6. ADDITIONAL EXTERNAL BATTERY PACKS (UP TO 10), CAN BE CONNECTED TO INCREASE THE RUN TIME FURTHER.
- △7. REPLACE EXISTING OUTPUT DISTRIBUTION PANEL ON UPS WITH SRT008. REFER TO SRT008 INSTALLATION MANUAL FOR DETAILED INSTRUCTION. OUTPUT DISTRIBUTION PANEL CONTAINS SWITCHABLE OUTLET GROUPS.
- △8. DASHED LINE BETWEEN UPS AND STEP-DOWN TRANSFORMER (----) REPRESENTS POWER CORD (WITH L6-30P, TWIST-LOCK), PROVIDED BY Schneider Electric.
- △9. STEP-DOWN TRANSFORMERS CAN BE CONNECTED TO ANY OUTLET GROUPS.

THIS DRAWING AND SPECIFICATIONS HEREIN ARE THE PROPERTY OF SCHNEIDER ELECTRIC AND SHALL NOT BE COPIED, REPRODUCED OR USED IN WHOLE OR IN PART, AS THE BASIS FOR THE MANUFACTURE OR SALE OF ITEMS WITHOUT WRITTEN PERMISSION FROM SCHNEIDER ELECTRIC. THIS DRAWING IS BASED UPON LATEST AVAILABLE INFORMATION AND IS SUBJECT TO CHANGE WITHOUT NOTICE.



**TITLE:** Smart-UPS Online (SRT) w/ TRANSFORMER  
 SRT10KRMXL1-5KTF2 + SRT192RMBP - RACKMOUNT  
**INPUT:** 208/240VAC, (L1+L2+G), HARDWARE  
**UPS OUTPUT:** 208/240VAC, (L1+L2+G), (6) NEMA L6-20R, HARDWARE  
**TRANSFORMER OUTPUT:** 120VAC, (24) 5-20R  
 SYSTEM SINGLE-LINE DIAGRAM

**PROJECT:** STD SUBMITTAL DRAWING **SHEET:** 4 OF 4

**DWG NO:** SRT10KRMXL1-5KTF2 **REV:** 0

**DRAWN BY:** S CUNHA **16JUN2015** **PROJ:** ANGLE

**ENGINEER:** V CHENNAKESAVAN **16JUN2015** **ANGLE:** N/A

**APPROVED BY:** K WHITE/J PRECOPIO **16JUN2015**