

FRONT VIEW

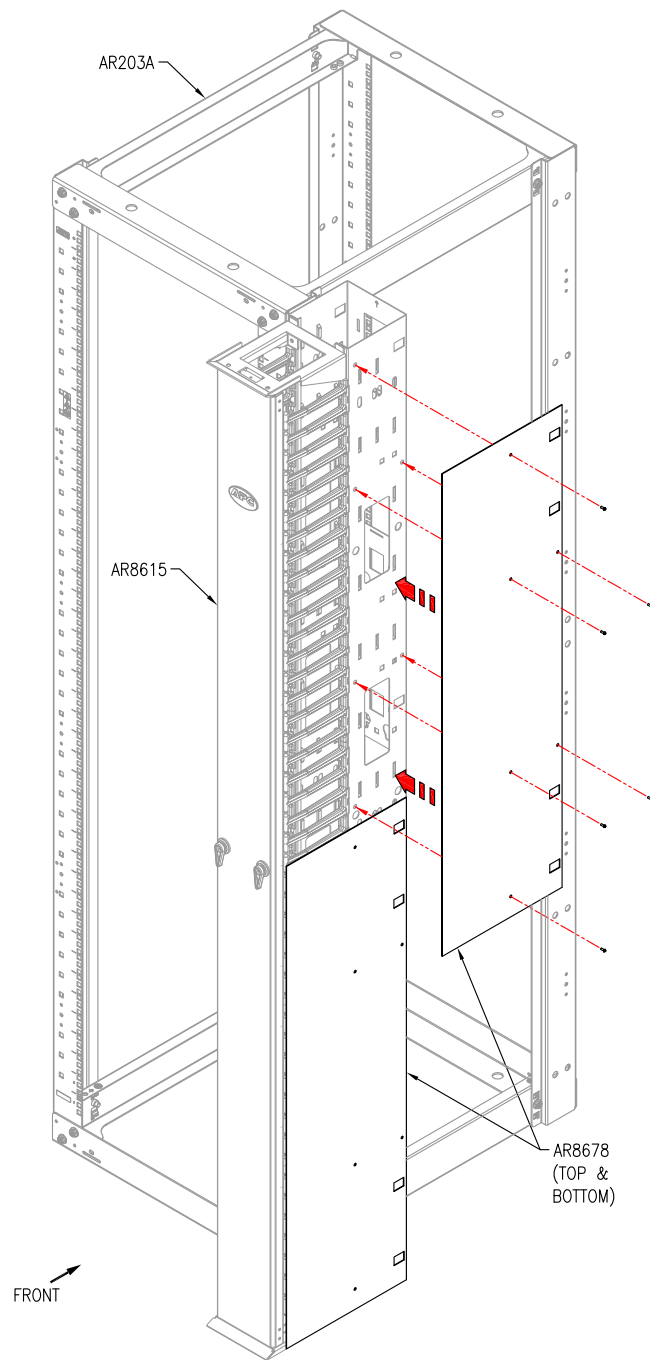
NOTES:

1. INSTALLATION SHALL COMPLY WITH ALL APPLICABLE NATIONAL, STATE AND LOCAL CODES.
2. PLEASE REFER TO PRODUCT DOCUMENTATION FOR FURTHER INFORMATION.
3. ALL DIMENSIONS ARE IN INCHES [MILLIMETERS].
4. WEIGHT OF UNIT IS 12.00 LBS [5.45 KG].

THIS DRAWING AND SPECIFICATIONS HEREIN ARE THE PROPERTY OF SCHNEIDER ELECTRIC AND SHALL NOT BE COPIED, REPRODUCED OR USED IN WHOLE OR IN PART, AS THE BASIS FOR THE MANUFACTURE OR SALE OF ITEMS WITHOUT WRITTEN PERMISSION FROM SCHNEIDER ELECTRIC. THIS DRAWING IS BASED UPON LATEST AVAILABLE INFORMATION AND IS SUBJECT TO CHANGE WITHOUT NOTICE.



TITLE:	END OF ROW PANEL FOR SINGLE-SIDED 84" PERFORMANCE VERTICAL CABLE MANAGER (QTY. 2) MAIN MECHANICAL		DWG NO:	AR8678	REV.	0
PROJECT: STD SUBMITTAL DRAWINGS	SHEET	1 OF 2	DRAWN BY:	S CUNHA	28-FEB-13	THIRD ANGLE PROJ
			ENGINEER:	P FISCHER/J KUMMER	28-FEB-13	
			APPROVED BY:	S VOCCIO	28-FEB-13	



AR8615 CABLE MANAGER SHOWN
w/ AR203A OPEN FRAME RACK

NOTES:

1. INSTALLATION SHALL COMPLY WITH ALL APPLICABLE NATIONAL, STATE AND LOCAL CODES.
2. PLEASE REFER TO PRODUCT DOCUMENTATION FOR FURTHER INFORMATION.

THIS DRAWING AND SPECIFICATIONS HEREIN ARE THE PROPERTY OF SCHNEIDER ELECTRIC AND SHALL NOT BE COPIED, REPRODUCED OR USED IN WHOLE OR IN PART, AS THE BASIS FOR THE MANUFACTURE OR SALE OF ITEMS WITHOUT WRITTEN PERMISSION FROM SCHNEIDER ELECTRIC. THIS DRAWING IS BASED UPON LATEST AVAILABLE INFORMATION AND IS SUBJECT TO CHANGE WITHOUT NOTICE.



TITLE:
END OF ROW PANEL
FOR SINGLE-SIDED 84"
PERFORMANCE VERTICAL CABLE MANAGER (QTY. 2)
MOUNTING DETAIL
PROJECT: STD SUBMITTAL DRAWINGS SHEET 2 OF 2

DWG NO: AR8678
DRAWN BY: S CUNHA
ENGINEER: P FISCHER/J KUMMER
APPROVED BY: S VOCCIO

REV. 0
THIRD ANGLE PROJ

28-FEB-13	28-FEB-13	28-FEB-13
28-FEB-13	28-FEB-13	28-FEB-13