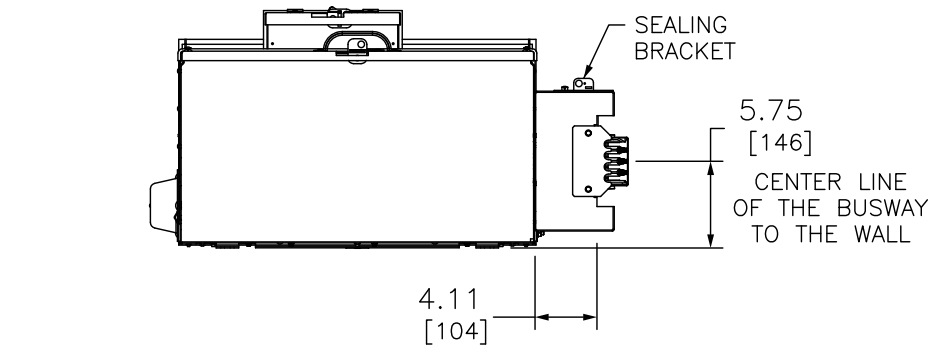


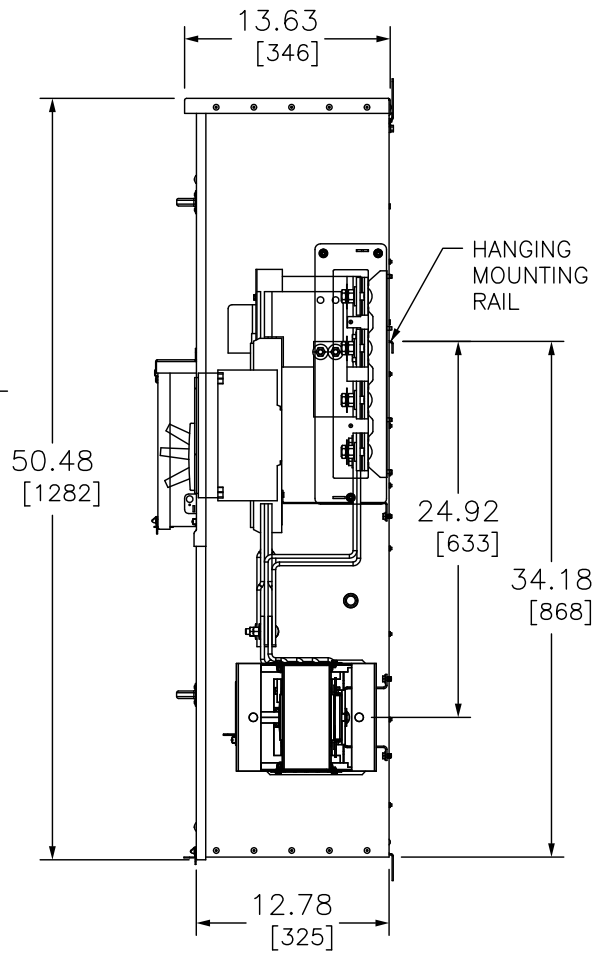
CLOSING PLATES
FACTORY INSTALLED
REMOVE PRIOR TO
CONNECTING BRANCH
UNIT AND REINSTALL
AT END OF LINE-UP

HORIZONTAL CROSS BUS
SYSTEM INCLUDES
EXCLUSIVE VISI-TITE
JOINT-NUTS TO MAKE
ALL PHASE AND NEUTRAL
CONNECTIONS BETWEEN
TWO EZM UNITS

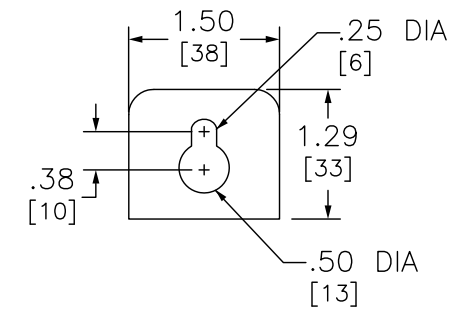
MOLDED CASE
CIRCUIT BREAKER
POWER PACT
P FRAME



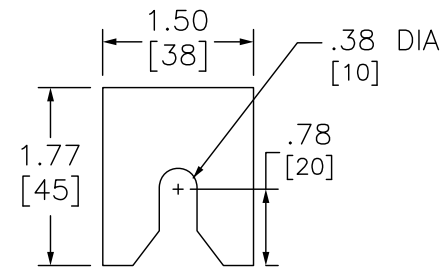
TO THE EDGE OF THE BUSWAY
WHEN IS FULLY ENGAGED.



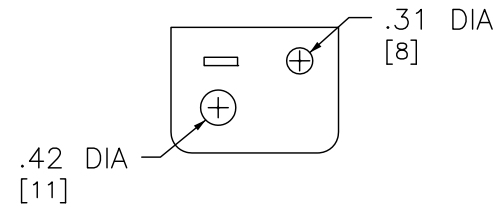
HANGING
MOUNTING
RAIL



TOP MOUNTING BRACKET



BOTTOM MOUNTING BRACKET

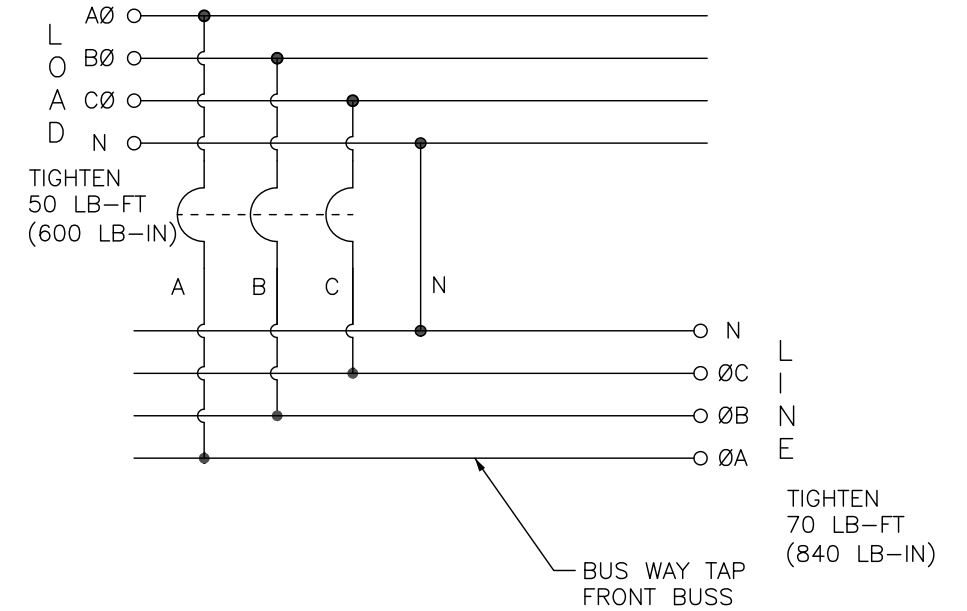


SEAL BRACKET

ADDITIONAL NOTES :

- HANDLE EXTENSION AVAILABLE P-FRAME BREAKER ORDER KIT REF. 33195

208Y/120V AC, 3Ø 4W
240/120V AC, 3Ø 4W DELTA



SUFFIX MEANS NBBTR (NEUTRAL FRONT, BUS TAP RIGHT)

DUAL DIMENSIONS: INCHES
MILLIMETERS

NOTES:
FINISH - GRAY BAKED ENAMEL POWDER COAT PAINT OVER CLEANED GALVANNEALED STEEL.
UL LISTED - FILE E131840, VOL. M
MAIN HORIZONTAL CROSS BUS RATED AT 1200 AMPERES. COPPER 1/4 x 2-1/2 TWO LAMINATIONS
MAIN DEVICES ARE SEALABLE BY UTILITY.
GANGABLE MULTI-METERING EQUIPMENT IS DESIGNED FOR WALL MOUNTING ONLY.
(NOT SUITABLE FOR FLOOR STANDING EQUIPMENT.)
*1200A MAIN CIRCUIT BREAKER SUITABLE FOR USE ONLY WITH BRANCH DEVICES WITH MAIN BUS RATED 1200A
GROUND CONTINUITY IS MAINTAINED THROUGH THE ENCLOSURE WITH BUSWAY BONDING BRACKETS.

SYSTEM TYPE	MAIN RATING (AMPERES)	CATALOG NUMBER	MOLDED CASE BREAKER POWER PACT P-FRAME (FACTORY INSTALLED)	CIRCUIT BREAKER INTERRUPTING RATING
3 Ø 4W 208Y/120VAC OR 240/120VAC DELTA	1200	EZM31200GBNBBTR	PGF36120U31A	65KA @ 240 VOLTS
	1200	EZM31200JBNBBTR	PJF36120U31A	100KA @ 240 VOLTS

EZ METER-PAK GANGABLE
MULTI-METERING EQUIPMENT
1200A 3PH 4W MAIN CIRCUIT BREAKER
BUSWAY FEED RIGHT SIDE
INDOOR TYPE 1 ENCLOSURE

SQUARE D
by Schneider Electric

DWG# PWFDS-SYRS-0160
NO.