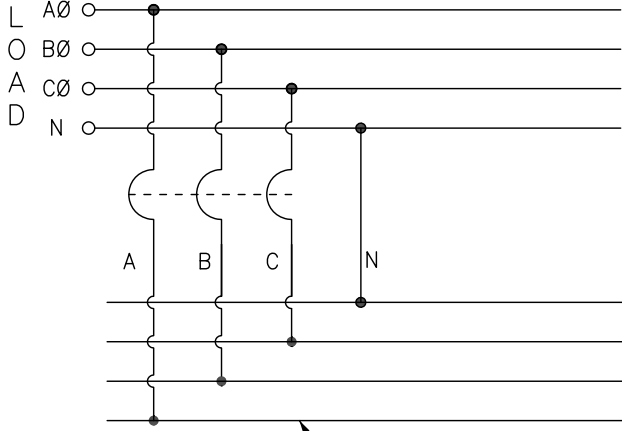


ADDITIONAL NOTES :

- HANDLE EXTENSION AVAILABLE M-FRAME BREAKER
ORDER KIT REF. 33195

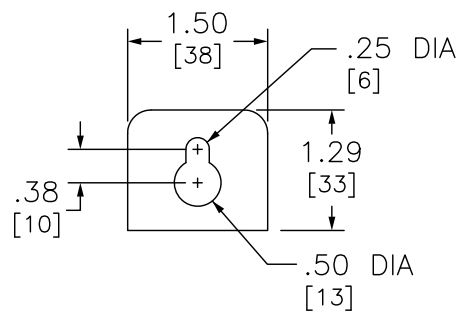
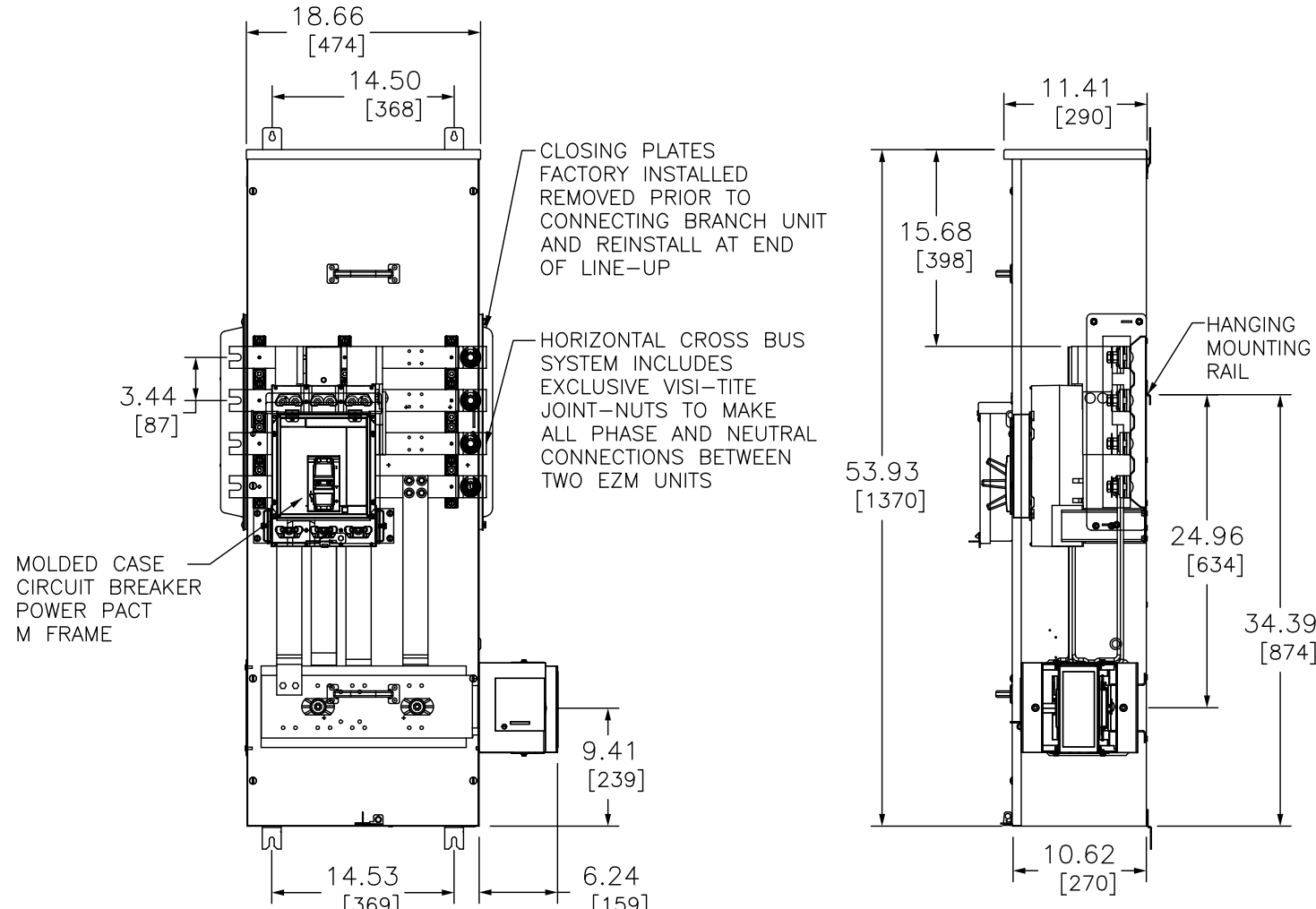
KNOCKOUTS		
SYMBOL	CONDUIT SIZE	
	IN	MM
A	.50	13
B	.75	19

208Y/120VAC, 3Ø 4W
240/120VAC, 3Ø 4W

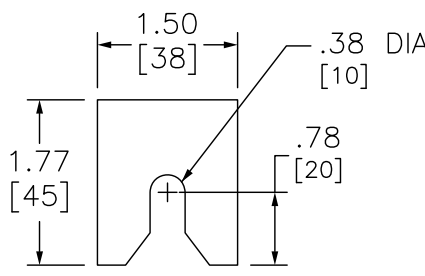


TIGHTEN
50 LB-FT
(600 LB-IN)

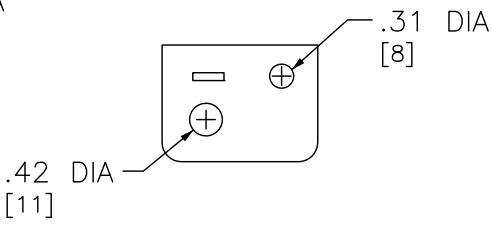
TIGHTEN
70 LB-FT
(840 LB-IN)



TOP MOUNTING
BRACKET

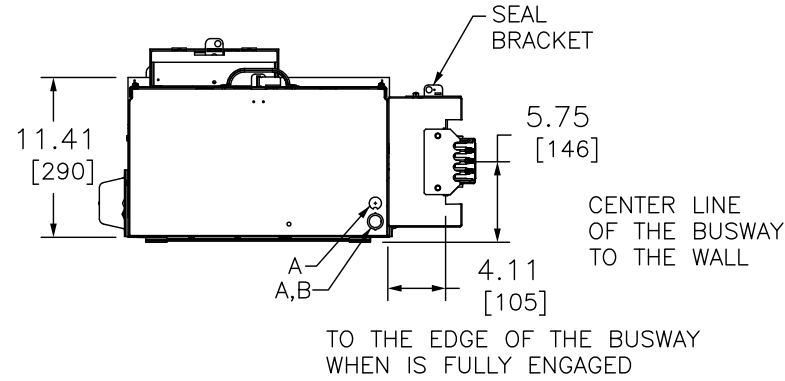


BOTTOM MOUNTING
BRACKET



SEAL BRACKET

DUAL DIMENSIONS: INCHES
MILLIMETERS



SYSTEM TYPE	MAIN RATING (AMPERES)	CATALOG NUMBER	MOLDED CASE BREAKER (FACTORY INSTALLED) INTERRUPTING RATING 65kA @ 240V
3Ø 4W 208Y/120VAC OR 240/120VAC DELTA	600	EZM3600CBNFBTR	MGF36600
	800	EZM3800CBNFBTR	MGF36800

NFBTR SUFFIX MEANS [NEUTRAL FRONT BUS TAP RIGHT]

NOTES:
FINISH - GRAY BAKED ENAMEL POWDER COAT PAINT OVER CLEANED GALVANNEALED STEEL.
UL LISTED - FILE E131840, VOL. M
MAIN HORIZONTAL CROSS BUS RATED AT 800 AMPERES. ALUMINUM 1/4 x 1-3/4 TWO LAMINATIONS
MAIN DEVICES ARE SEALABLE BY UTILITY.
GANGABLE MULTI-METERING EQUIPMENT IS DESIGNED FOR WALL MOUNTING ONLY.
(NOT SUITABLE FOR FLOOR STANDING EQUIPMENT.)
800AMP MAIN CIRCUIT BREAKER SUITABLE FOR USE ONLY WITH BRANCH DEVICES.
GROUND CONTINUITY IS MAINTAINED THROUGH THE ENCLOSURE WITH BUSWAY BONDING BRACKETS.

<p>EZ METER-PAK GANGABLE MULTI-METERING EQUIPMENT 600A-800A 3PH 4W MAIN CIRCUIT BREAKER BUSWAY FEED RIGHT SIDE INDOOR TYPE 1 ENCLOSURE</p>	 by Schneider Electric
<p>DWG# PWFDS-SYRS-0127 NO.</p>	