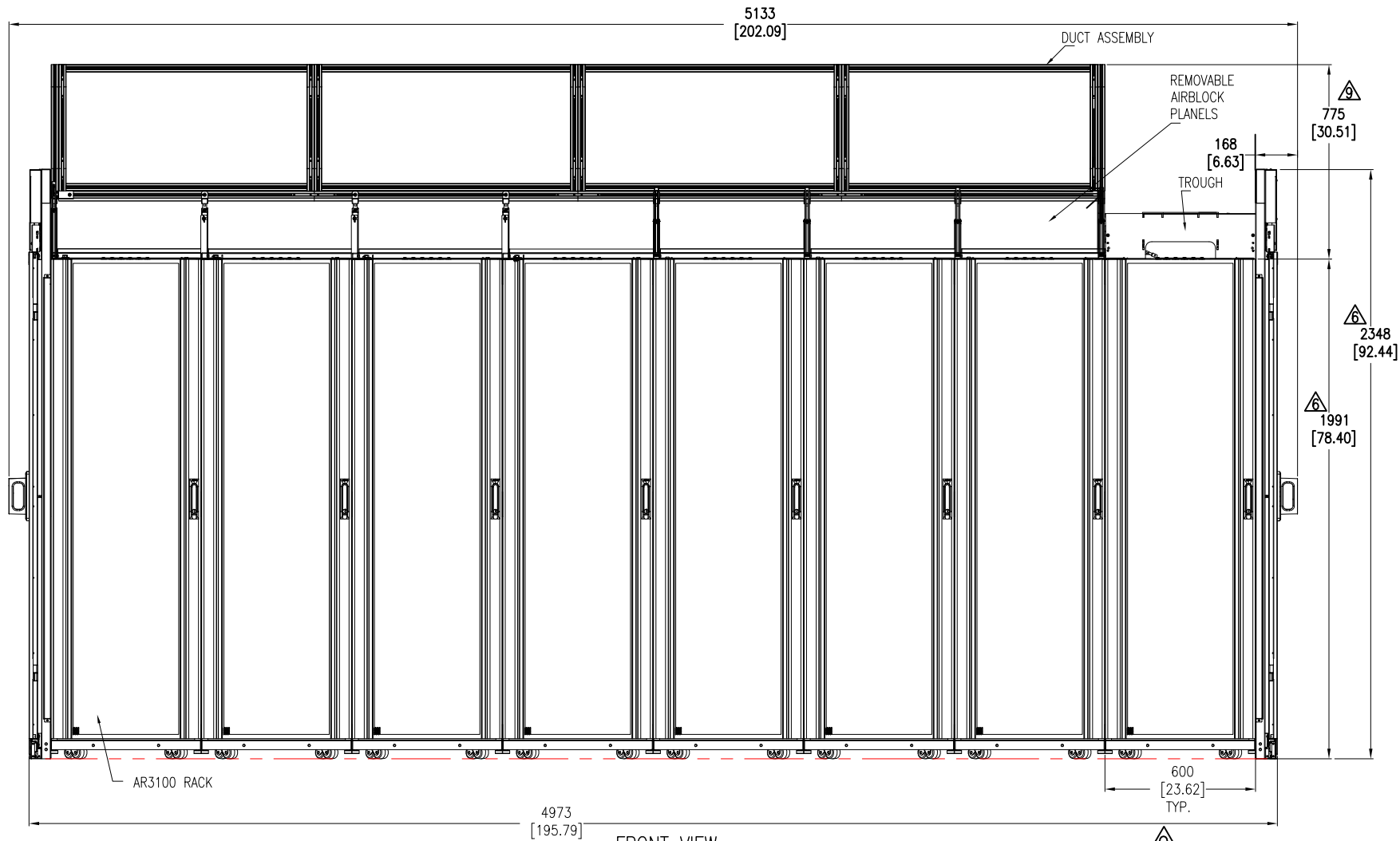


△ DUAL ROW SYSTEM—DUCTED WITH SLIDING DOOR CONFIGURATION



FRONT VIEW

NOTES:

1. COMPLY WITH ALL APPLICABLE NATIONAL AND LOCAL ELECTRICAL REGULATIONS.
2. REFER TO PRODUCT DOCUMENTATION FOR ADDITIONAL DETAILS PRIOR TO INSTALLATION AND SITE PREPARATION WORK.
3. ALL DIMENSIONS ARE IN MILLIMETERS [INCHES].
4. WEIGHT – REFER TO THE RESPECTIVE SUBMITTALS.
5. OVER ALL WIDTH DIMENSION MAY VARY AS PER RACK WIDTH.
- △6. OVER ALL HEIGHT DIMENSION MAY VARY AS PER RACK AND SLIDING DOOR HEIGHT. SHOWN TYPICAL ARRANGEMENT FOR 42U RACK. REFER TO TABLE FOR DETAILS.
- △7. DRAWING ABOVE SHOWN IS FOR TYPICAL CONFIGURATION.
8. RACKS ARE BAYED TOGETHER TIGHT AT 600mm SPACING, NOT MATCHING 24-INCH FLOOR TILES. LENGTH OF POD WILL CHANGE IF BAYED ON 24-INCH CENTERS TO MATCH FLOOR TILES.
- △9. DISTANCE BETWEEN TOP OF RACK AND SUSPENDED CEILING.

△6

RACK HEIGHT	
U	mm [inch]
42U	1991 [78.39]
45U	2124 [83.64]
48U	2258 [88.90]

△9

DUCT PANEL DETAILS

SKU	* DIMENSION IN Inch(mm) (FROM TOP OF RACK TO CEILING)
ACDC2303/4	31.0 (787.4)
ACDC2305/6	41.0 (1041.4)
ACDC2307/8	50.0 (1270.0)
ACDC2309/10	60.0 (1524.0)

* All can be cut down in size to fit custom dimensions.

△6

SLIDING DOOR DETAILS

Rack Height	Door Assy Height	Header Assy Height	Door+Header Height	Header Clearance
42U SX	2018 [79.45]	196.0 [7.72]	2214.0 [87.17]	196.0 (7.72)
42U VX / 45U SX	2018 [79.45]	330.0 [12.97]	2348.0 [92.44]	330.0 (12.97)
48U SX	2018 [79.45]	463.0 [18.22]	2481.0 [97.67]	463.0 (18.22)

THIS DRAWING AND SPECIFICATIONS HEREIN ARE THE PROPERTY OF SCHNEIDER ELECTRIC AND SHALL NOT BE COPIED, REPRODUCED OR USED IN WHOLE OR IN PART, AS THE BASIS FOR THE MANUFACTURE OR SALE OF ITEMS WITHOUT WRITTEN PERMISSION FROM SCHNEIDER ELECTRIC. THIS DRAWING IS BASED UPON LATEST AVAILABLE INFORMATION AND IS SUBJECT TO CHANGE WITHOUT NOTICE.



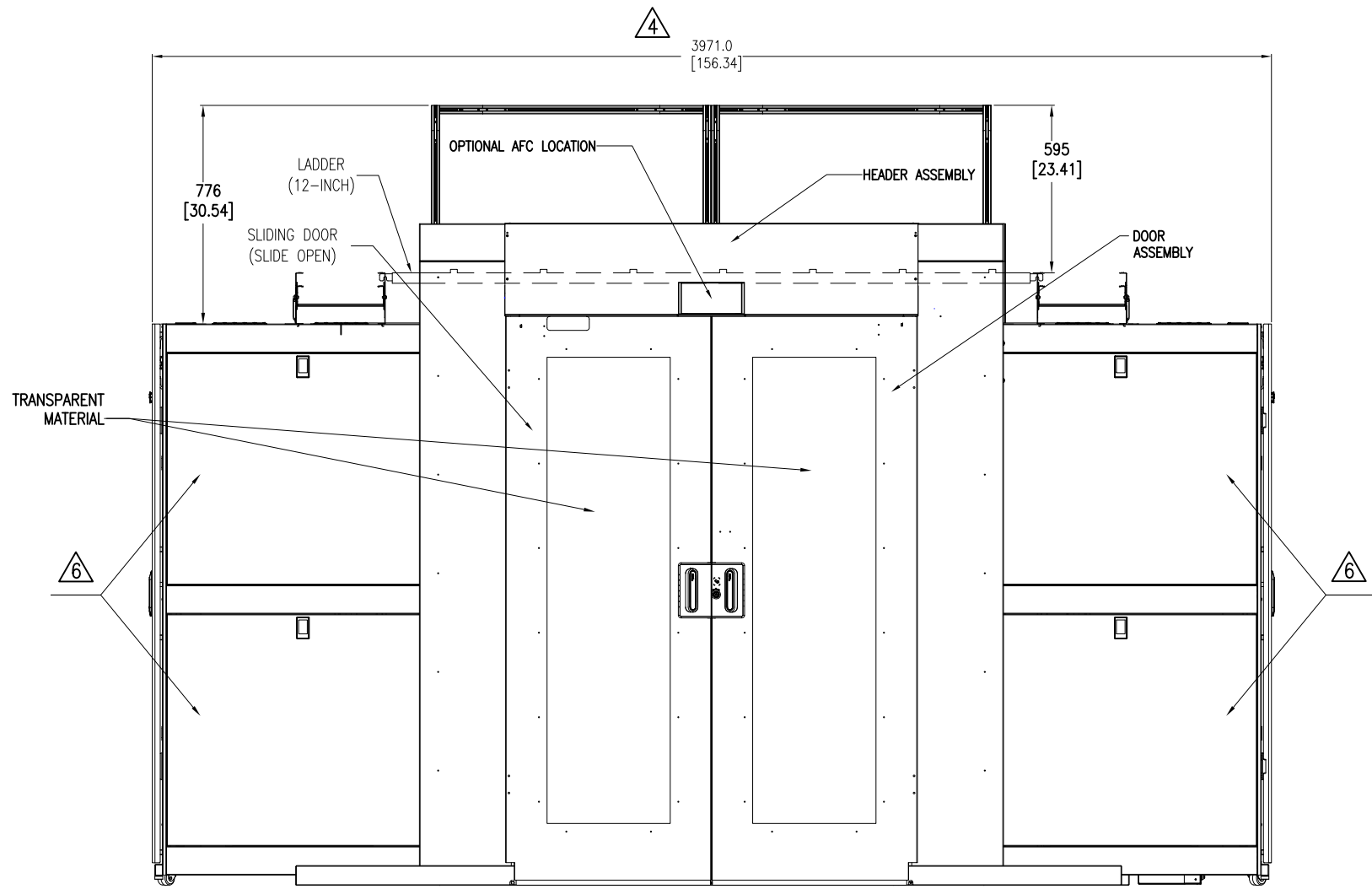
TITLE:
ECO AISLE – DUAL ROW SYSTEM
DUCTED WITH SLIDING DOOR
CONFIGURATION
ASSEMBLY—FRONT VIEW

DWG NO: EA-DRS-ASSY4

REV. 1

DRAWN BY: K.NAGENDRA 03-MAY-17 FIRST ANGLE
ENGINEER: NICK SCHWEISSGUTH 03-MAY-17 PROJ
APPROVED BY: AARON GRAFF 03-MAY-17

PROJECT: SUBMITTAL DRAWINGS SHEET 1 OF 4



LEFT SIDE VIEW

NOTES:

1. COMPLY WITH ALL APPLICABLE NATIONAL AND LOCAL ELECTRICAL REGULATIONS.
2. REFER TO PRODUCT DOCUMENTATION FOR ADDITIONAL DETAILS PRIOR TO INSTALLATION AND SITE PREPARATION WORK.
3. ALL DIMENSIONS ARE IN MILLIMETERS [INCHES].
- Δ4. OVER ALL CONTAINMENT POD WIDTH DIMENSION MAY VARY AS PER THE COMPONENT SELECTED. 1070 [42.125] DEPTH RACK SHOWN FOR TYPICAL ARRANGEMENT. REFER TO TABLE FOR DETAILS.
5. RACKS ARE BAYED TOGETHER TIGHT AT 600mm SPACING, NOT MATCHING 24-INCH FLOOR TILES. LENGTH OF POD WILL CHANGE IF BAYED ON 24-INCH CENTERS TO MATCH FLOOR TILES.
- Δ6. ALL THE SIDE PANELS OF RACK ARE REMOVABLE IF REQUIRED.

Δ4

RACK DEPTH
mm [inch]
825 [32.480]
1070 [42.125]
1200 [47.244]

THIS DRAWING AND SPECIFICATIONS HEREIN ARE THE PROPERTY OF SCHNEIDER ELECTRIC AND SHALL NOT BE COPIED, REPRODUCED OR USED IN WHOLE OR IN PART, AS THE BASIS FOR THE MANUFACTURE OR SALE OF ITEMS WITHOUT WRITTEN PERMISSION FROM SCHNEIDER ELECTRIC. THIS DRAWING IS BASED UPON LATEST AVAILABLE INFORMATION AND IS SUBJECT TO CHANGE WITHOUT NOTICE.



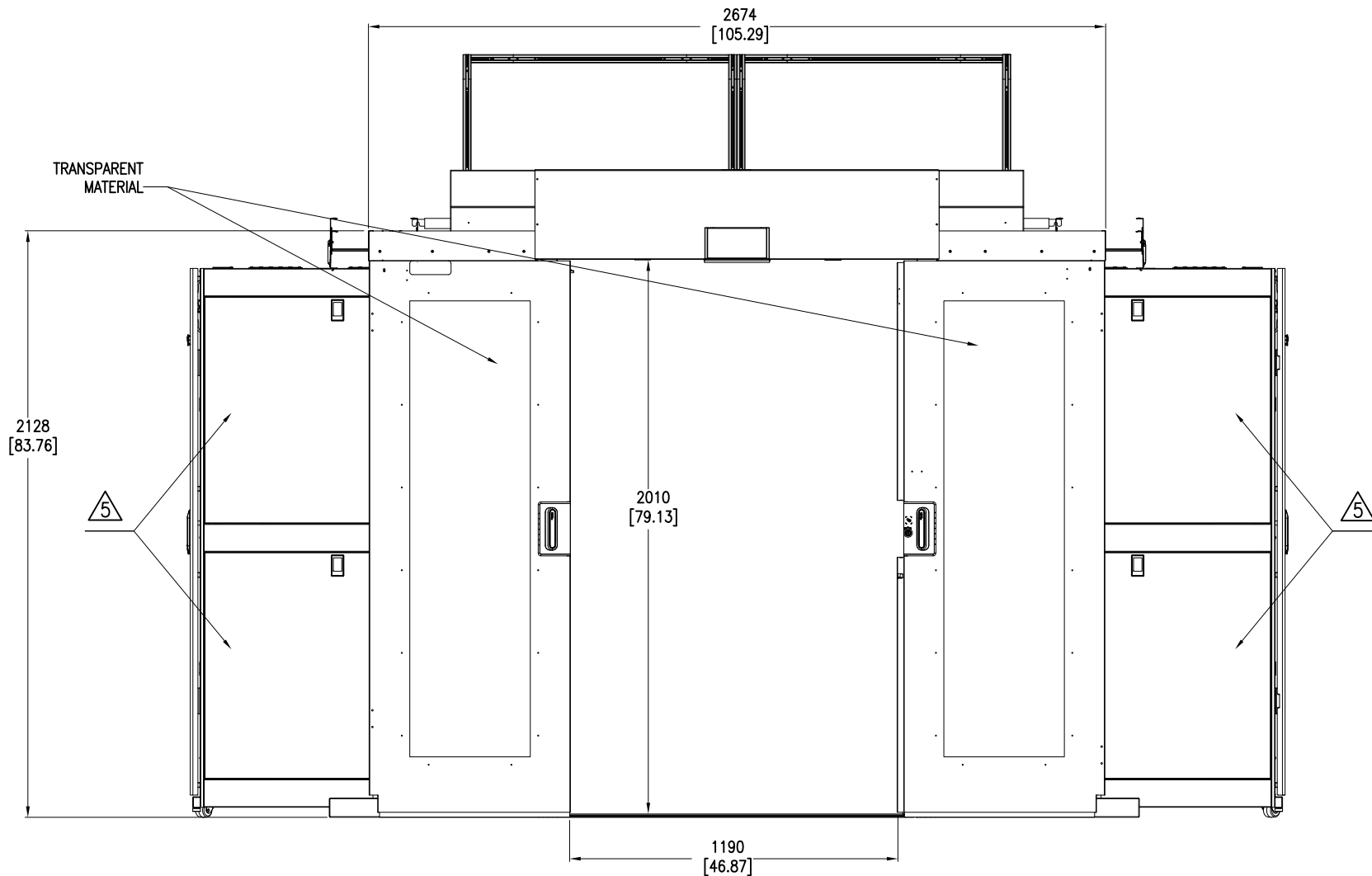
TITLE:
ECO AISLE – DUAL ROW SYSTEM
DUCTED WITH SLIDING DOOR
CONFIGURATION
ASSEMBLY—RIGHT SIDE VIEW

DWG NO: EA-DRS-ASSY4 REV. 1

DRAWN BY: K.NAGENDRA	03-MAY-17	FIRST ANGLE PROJ
ENGINEER: NICK SCHWEISSGUTH	03-MAY-17	

PROJECT: SUBMITTAL DRAWINGS SHEET 2 OF 4

APPROVED BY: AARON GRAFF 03-MAY-17



RIGHT SIDE VIEW
LEFT SIDE DOOR NOT SHOWN FOR CLARITY

NOTES:

1. COMPLY WITH ALL APPLICABLE NATIONAL AND LOCAL ELECTRICAL REGULATIONS.
2. REFER TO PRODUCT DOCUMENTATION FOR ADDITIONAL DETAILS PRIOR TO INSTALLATION AND SITE PREPARATION WORK.
3. ALL DIMENSIONS ARE IN MILLIMETERS [INCHES].
4. RACKS ARE BAYED TOGETHER TIGHT AT 600mm SPACING, NOT MATCHING 24-INCH FLOOR TILES.
LENGTH OF POD WILL CHANGE IF BAYED ON 24-INCH CENTERS TO MATCH FLOOR TILES.
- Δ5. ALL THE SIDE PANELS OF RACK ARE REMOVABLE IF REQUIRED.

THIS DRAWING AND SPECIFICATIONS HEREIN ARE THE PROPERTY OF SCHNEIDER ELECTRIC AND SHALL NOT BE COPIED, REPRODUCED OR USED IN WHOLE OR IN PART, AS THE BASIS FOR THE MANUFACTURE OR SALE OF ITEMS WITHOUT WRITTEN PERMISSION FROM SCHNEIDER ELECTRIC. THIS DRAWING IS BASED UPON LATEST AVAILABLE INFORMATION AND IS SUBJECT TO CHANGE WITHOUT NOTICE.



TITLE:
ECO AISLE – DUAL ROW SYSTEM
DUCTED WITH SLIDING DOOR
CONFIGURATION
ASSEMBLY–LEFT SIDE VIEW

PROJECT: SUBMITTAL DRAWINGS SHEET 3 OF 4

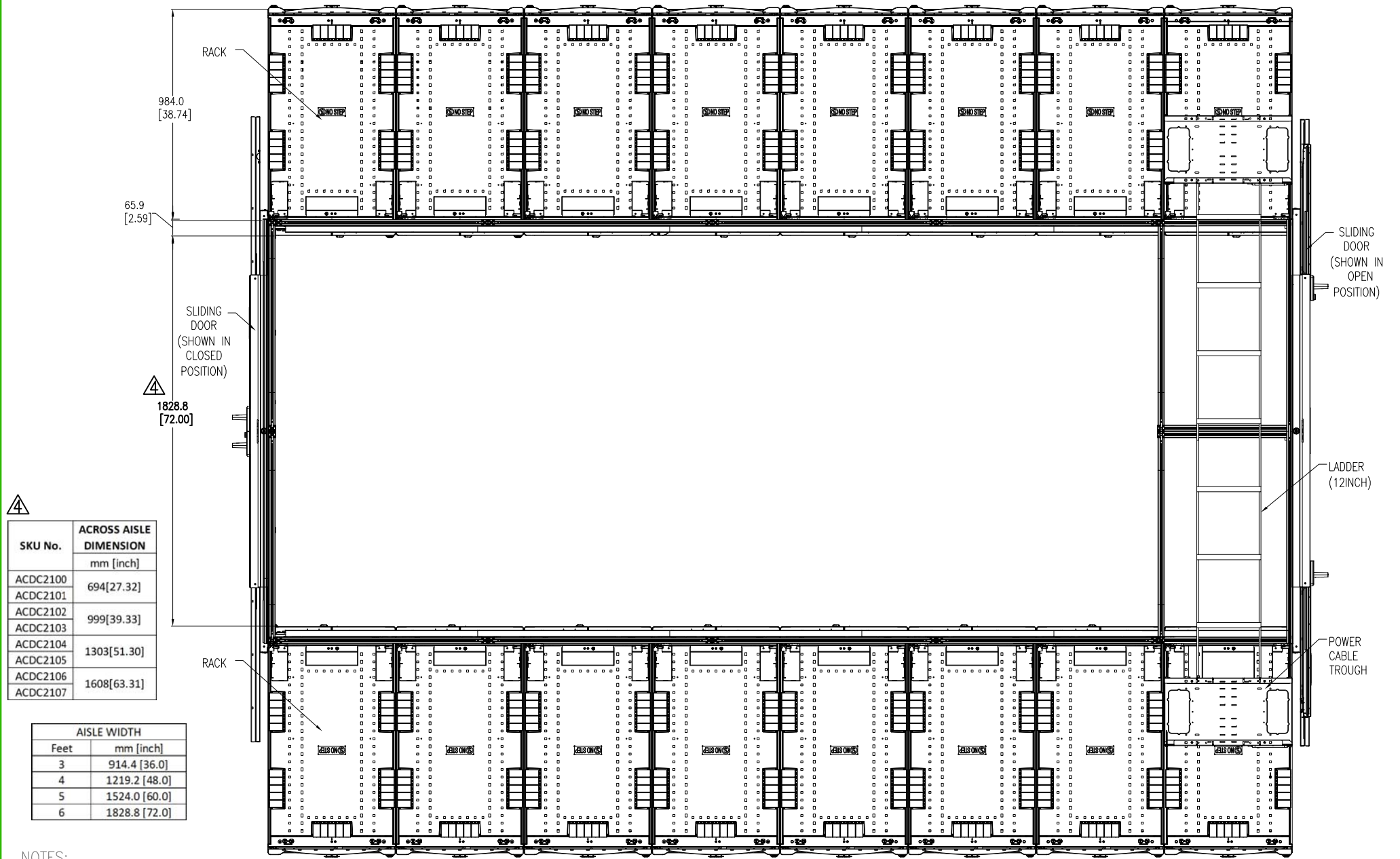
DWG NO: EA-DRS-ASSY4 REV. 1

DRAWN BY: K.NAGENDRA 03-MAY-17

ENGINEER: NICK SCHWEISSGUTH 03-MAY-17

APPROVED BY: AARON GRAFF 03-MAY-17

FIRST
ANGLE
PROJ



SKU No.	ACROSS AISLE DIMENSION
	mm [inch]
ACDC2100	694[27.32]
ACDC2101	694[27.32]
ACDC2102	999[39.33]
ACDC2103	999[39.33]
ACDC2104	1303[51.30]
ACDC2105	1303[51.30]
ACDC2106	1608[63.31]
ACDC2107	1608[63.31]

AISLE WIDTH	
Feet	mm [inch]
3	914.4 [36.0]
4	1219.2 [48.0]
5	1524.0 [60.0]
6	1828.8 [72.0]

- NOTES:
1. COMPLY WITH ALL APPLICABLE NATIONAL AND LOCAL ELECTRICAL REGULATIONS.
 2. REFER TO PRODUCT DOCUMENTATION FOR ADDITIONAL DETAILS PRIOR TO INSTALLATION AND SITE PREPARATION WORK.
 3. ALL DIMENSIONS ARE IN MILLIMETERS [INCHES].
 - △ 4. ACROSS AISLE DIMENSION MAY VARY AS PER THE REQUIREMENT. TABLE SHOWS STANDARD CONFIGURATION.
 5. RACKS ARE BAYED TOGETHER TIGHT AT 600mm SPACING, NOT MATCHING 24-INCH FLOOR TILES. LENGTH OF POD WILL CHANGE IF BAYED ON 24-INCH CENTERS TO MATCH FLOOR TILES.

THIS DRAWING AND SPECIFICATIONS HEREIN ARE THE PROPERTY OF SCHNEIDER ELECTRIC AND SHALL NOT BE COPIED, REPRODUCED OR USED IN WHOLE OR IN PART, AS THE BASIS FOR THE MANUFACTURE OR SALE OF ITEMS WITHOUT WRITTEN PERMISSION FROM SCHNEIDER ELECTRIC. THIS DRAWING IS BASED UPON LATEST AVAILABLE INFORMATION AND IS SUBJECT TO CHANGE WITHOUT NOTICE.



TITLE: ECO AISLE - DUAL ROW SYSTEM DUCTED WITH SLIDING DOOR CONFIGURATION ASSEMBLY - TOP VIEW
 PROJECT: SUBMITTAL DRAWINGS SHEET 4 OF 4

DWG NO: EA-DRS-ASSY4 REV. 1
 DRAWN BY: K.NAGENDRA 03-MAY-17 FIRST ANGLE PROJ
 ENGINEER: NICK SCHWEISSGUTH 03-MAY-17
 APPROVED BY: AARON GRAFF 03-MAY-17

TOP VIEW