

NOTES:

1. INSTALLATION SHALL COMPLY WITH ALL APPLICABLE NATIONAL, STATE AND LOCAL CODES.
2. REFER TO PRODUCT MANUALS PRIOR TO INSTALLATION AND SITE PREPARATION WORK FOR FURTHER DETAILS.
ONLY TRAINED ELECTRICIAN MUST PERFORM WORK ON THIS EQUIPMENT.
3. TURN OFF POWER TO BUSWAY BEFORE INSTALLING, REMOVING, OR WORKING ON THIS EQUIPMENT.
4. DO NOT INSTALL VERTICALLY, POWERBUS IS NOT SUITABLE FOR VERTICAL MOUNTING.
5. PROVIDE SUFFICIENT HORIZONTAL AND VERTICAL CLEARANCE FROM WALLS AND CEILINGS TO PROVIDE EASY ACCESS TO JOINTS AND SUFFICIENT ROOM FOR TAP OFF UNIT INSTALLATION.
6. ENSURE THAT ALL JOINT CONTACT SURFACES ARE FREE OF CONTAMINANTS.
7. VERIFY THAT THE SYSTEM PHASING MATCHES THE BUSWAY PHASING.
8. ALL DIMENSIONS ARE IN INCHES [MILLIMETERS]
9. WEIGHT OF THE UNIT IS 32.0lbs [14.5kg]
10. AMPERAGE, WEIGHT & BUSBAR SIZE:

Product (Amperage)	Weight (Based on Busbar Configuration)	Busbar Size (thickness x width)
400A	4 bar - 4A 8.0 lb/ft (11.9kg/m)	.125x2.250 inches (3 x 57mm)

PBCE4A400AST048B

THIS DRAWING AND SPECIFICATIONS HEREIN ARE THE PROPERTY OF SCHNEIDER ELECTRIC AND SHALL NOT BE COPIED, REPRODUCED OR USED IN WHOLE OR IN PART, AS THE BASIS FOR THE MANUFACTURE OR SALE OF ITEMS WITHOUT WRITTEN PERMISSION FROM SCHNEIDER ELECTRIC. THIS DRAWING IS BASED UPON LATEST AVAILABLE INFORMATION AND IS SUBJECT TO CHANGE WITHOUT NOTICE.

Schneider Electric

TITLE: iBusway for Data Center System
Straight Length & Accessories
3PHASE, 400A, 600V
LENGTH-4ft
MAIN MECHANICAL-1

DWG NO: PB4A400A

DRAWN BY: K.NAGENDRA 05-AUG-14

ENGINEER: NARAYAN Nr 05-AUG-14

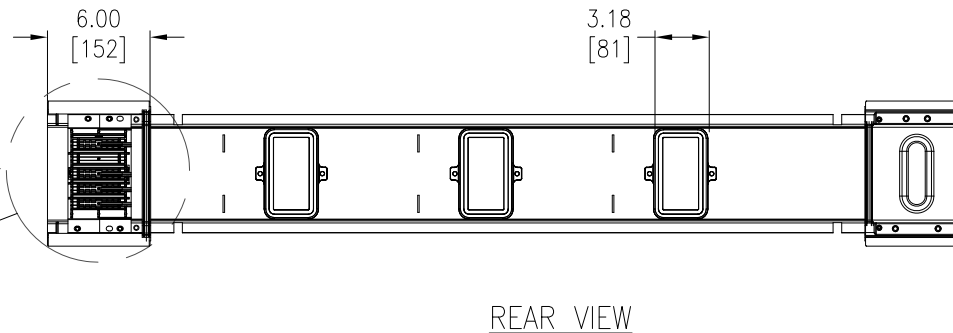
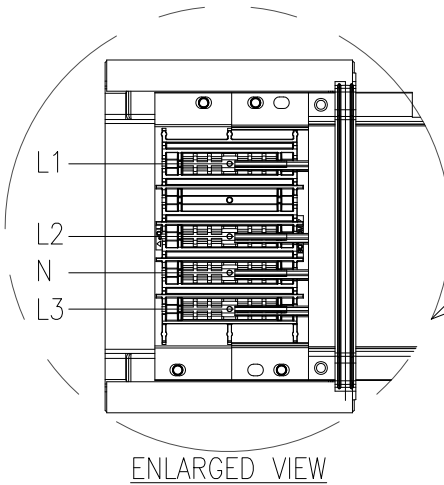
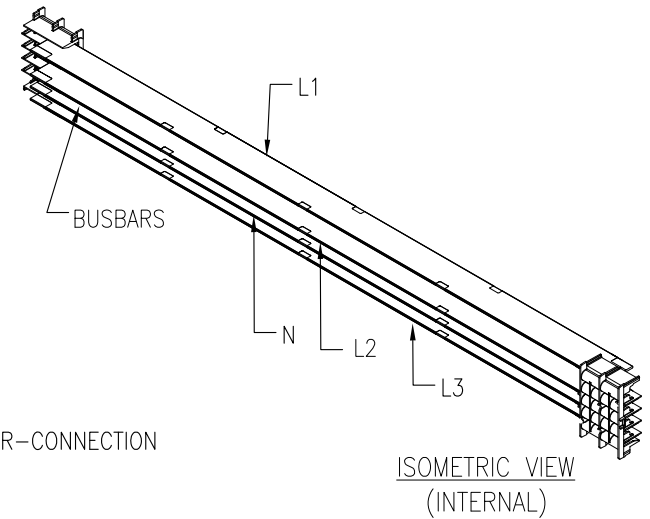
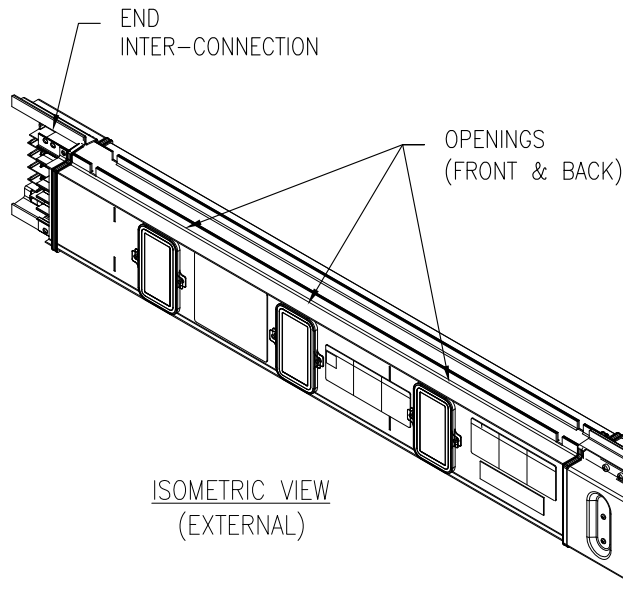
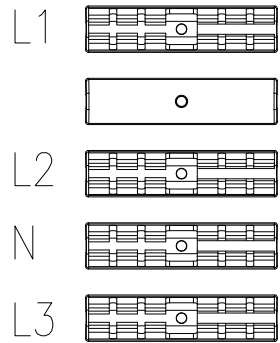
PROJECT: DRAWINGS SHEET 1 OF 10

APPROVED BY: AL WARNER 22-SEP-14

REV. 0

THIRD ANGLE PROJECTION

TAP OFF JOINT
JAW CONFIGURATION (4A)



NOTES:

1. INSTALLATION SHALL COMPLY WITH ALL APPLICABLE NATIONAL, STATE AND LOCAL CODES.
2. REFER TO PRODUCT MANUALS PRIOR TO INSTALLATION AND SITE PREPARATION WORK FOR FURTHER DETAILS.
3. ALL DIMENSIONS ARE IN INCHES [MILLIMETERS].
4. SOME STRUCTURAL DETAILS HAVE BEEN OMITTED FOR THE PURPOSE OF CLARITY.

PBCE4A400AST048B

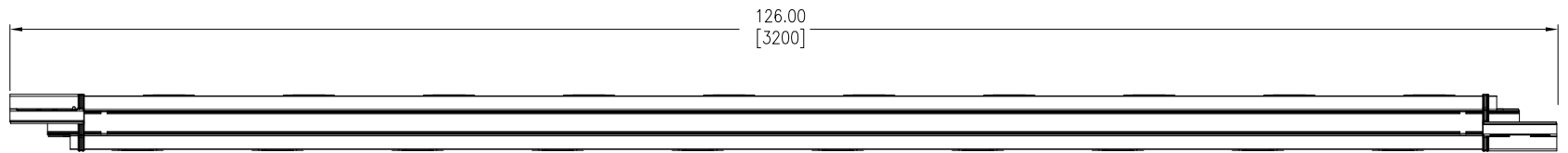
THIS DRAWING AND SPECIFICATIONS HEREIN ARE THE PROPERTY OF SCHNEIDER ELECTRIC AND SHALL NOT BE COPIED, REPRODUCED OR USED IN WHOLE OR IN PART, AS THE BASIS FOR THE MANUFACTURE OR SALE OF ITEMS WITHOUT WRITTEN PERMISSION FROM SCHNEIDER ELECTRIC. THIS DRAWING IS BASED UPON LATEST AVAILABLE INFORMATION AND IS SUBJECT TO CHANGE WITHOUT NOTICE.



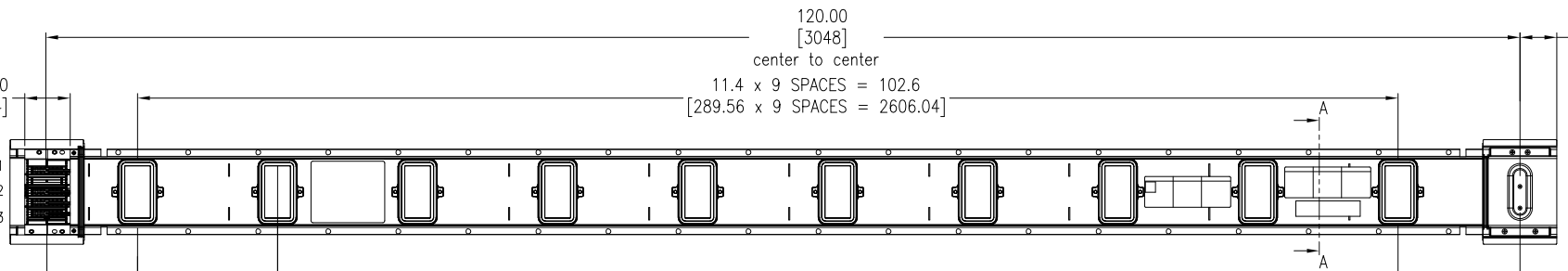
TITLE: Busway for Data Center System
Straight Length & Accessories
3PHASE, 400A, 600V
LENGTH-4ft
REAR AND ISO VIEW-1

DWG NO: PB4A400A
DRAWN BY: K.NAGENDRA 05-AUG-14
ENGINEER: NARAYAN Nr 05-AUG-14
APPROVED BY: AL WARNER 22-SEP-14

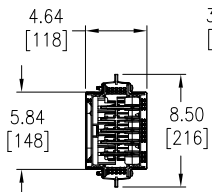
REV. 0
THIRD ANGLE PROJECTION



TOP VIEW

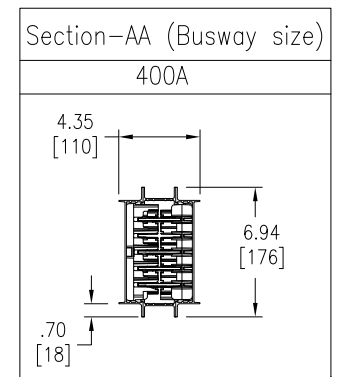


FRONT VIEW



LEFT SIDE VIEW

L1
L2
N
L3



- NOTES:
1. INSTALLATION SHALL COMPLY WITH ALL APPLICABLE NATIONAL, STATE AND LOCAL CODES.
 2. REFER TO PRODUCT MANUALS PRIOR TO INSTALLATION AND SITE PREPARATION WORK FOR FURTHER DETAILS.
 3. ALL DIMENSIONS ARE IN INCHES [MILLIMETERS].
 4. WEIGHT OF THE UNIT IS 80.0lbs [36.3kg]
 5. AMPERAGE, WEIGHT & BUSBAR SIZE :

Product (Amperage)	Weight (Based on Busbar Configuration) 4 bar - 4A	Busbar Size (thickness x width)
400A	8.0 lb/ft (11.9kg/m)	.125x2.250 inches (3 x 57mm)

PBCE4A400AST120B

THIS DRAWING AND SPECIFICATIONS HEREIN ARE THE PROPERTY OF SCHNEIDER ELECTRIC AND SHALL NOT BE COPIED, REPRODUCED OR USED IN WHOLE OR IN PART, AS THE BASIS FOR THE MANUFACTURE OR SALE OF ITEMS WITHOUT WRITTEN PERMISSION FROM SCHNEIDER ELECTRIC. THIS DRAWING IS BASED UPON LATEST AVAILABLE INFORMATION AND IS SUBJECT TO CHANGE WITHOUT NOTICE.

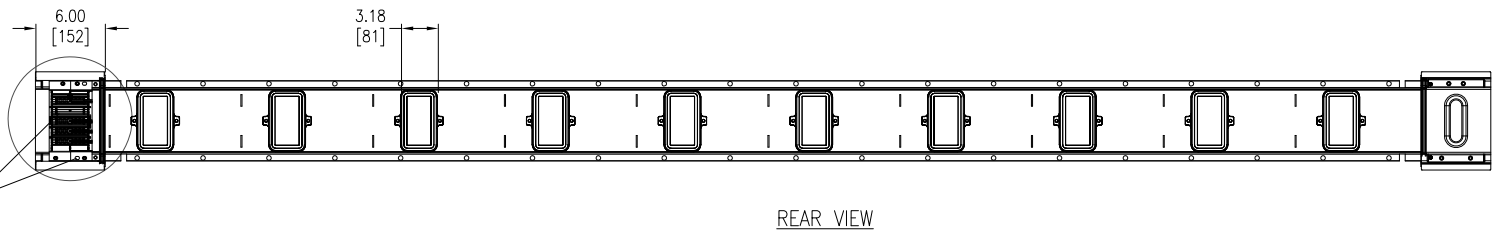
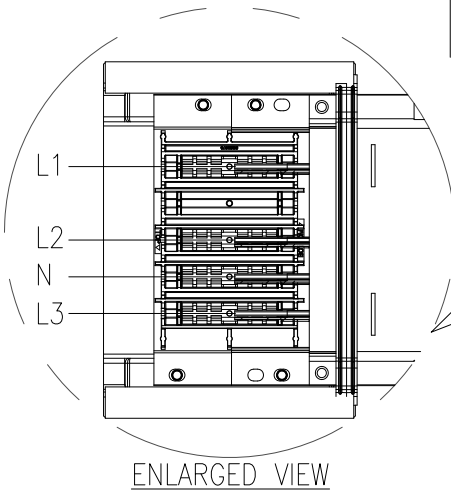
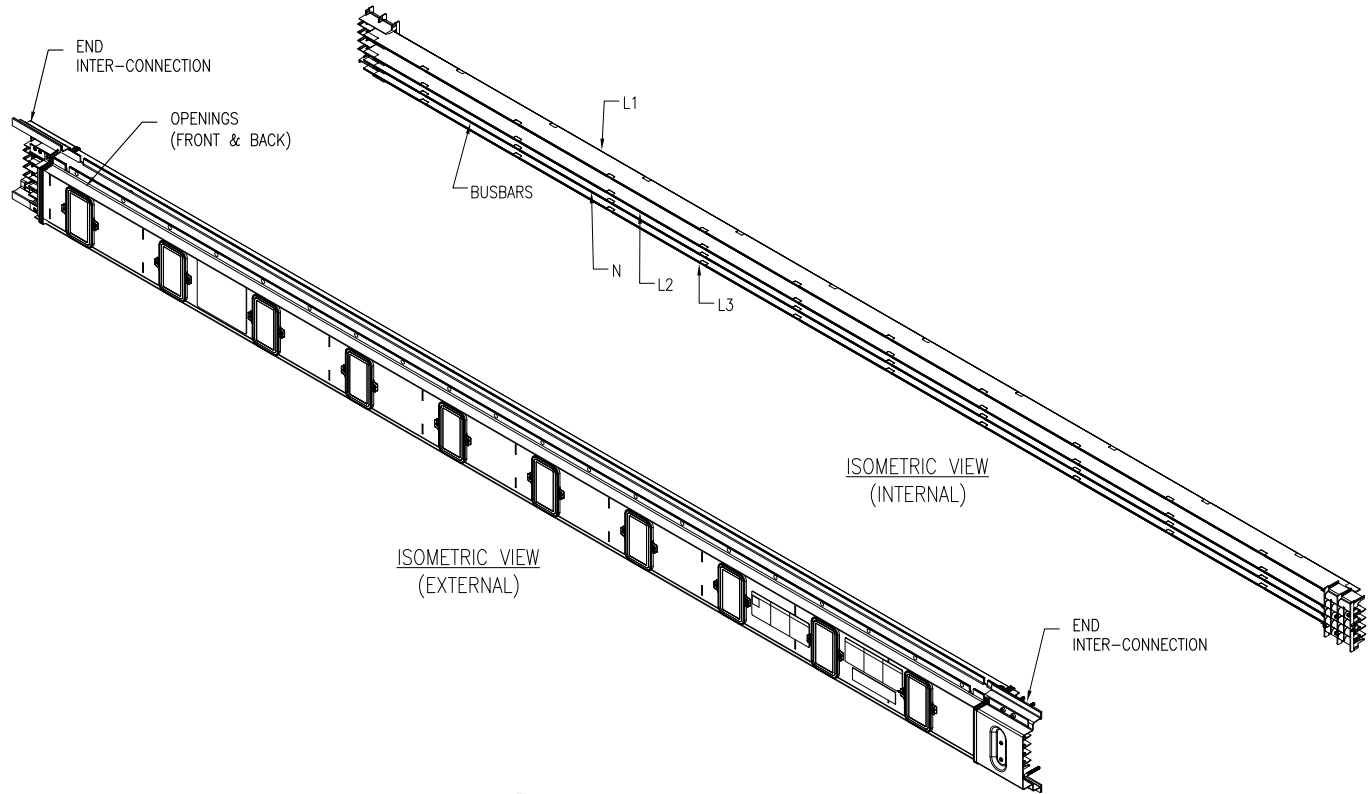
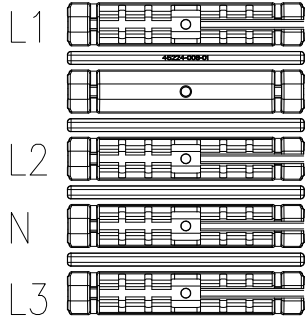


TITLE: iBusway for Data Center System
Straight Length & Accessories
3PHASE, 400A, 600V
LENGTH-10ft
MAIN MECHANICAL-2
PROJECT: DRAWINGS SHEET 3 OF 10

DWG NO: PB4A400A
DRAWN BY: K.NAGENDRA 05-AUG-14
ENGINEER: NARAYAN Nr 05-AUG-14
APPROVED BY: AL WARNER 22-SEP-14

REV. 0
THIRD ANGLE PROJECTION

TAP OFF JOINT
JAW CONFIGURATION (4A)



NOTES:

1. INSTALLATION SHALL COMPLY WITH ALL APPLICABLE NATIONAL, STATE AND LOCAL CODES.
2. REFER TO PRODUCT MANUALS PRIOR TO INSTALLATION AND SITE PREPARATION WORK FOR FURTHER DETAILS.
3. ALL DIMENSIONS ARE IN INCHES [MILLIMETERS].
4. SOME STRUCTURAL DETAILS HAVE BEEN OMITTED FOR THE PURPOSE OF CLARITY.

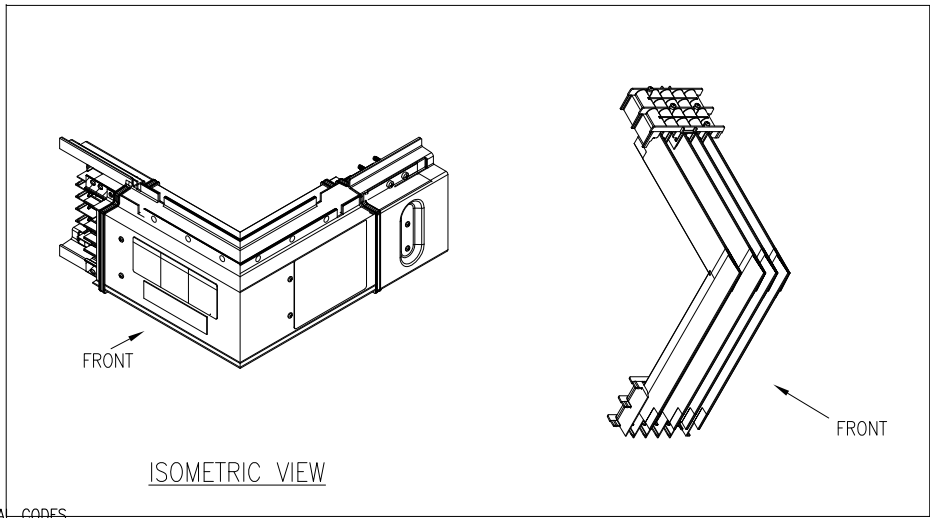
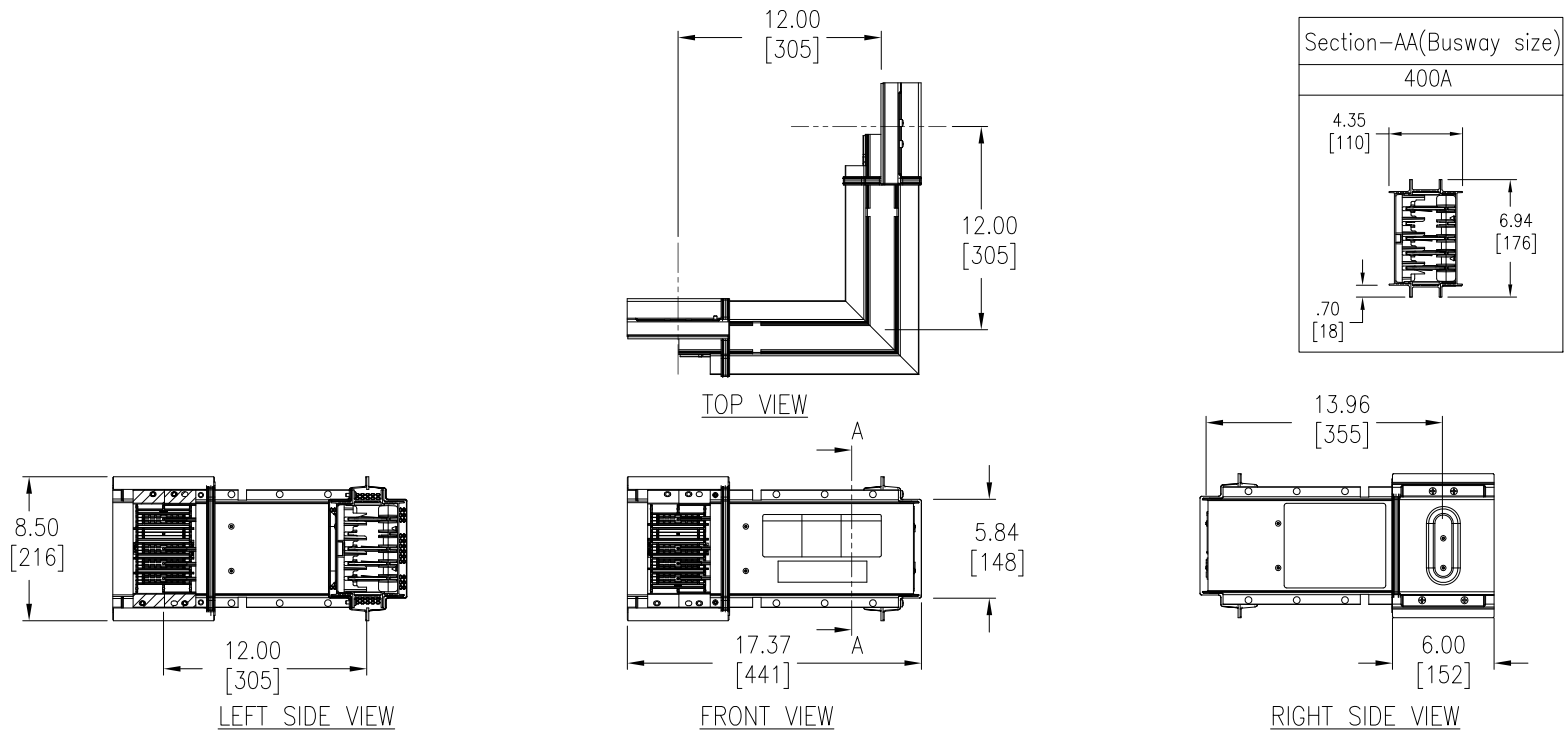
PBCE4A400AST120B

THIS DRAWING AND SPECIFICATIONS HEREIN ARE THE PROPERTY OF SCHNEIDER ELECTRIC AND SHALL NOT BE COPIED, REPRODUCED OR USED IN WHOLE OR IN PART, AS THE BASIS FOR THE MANUFACTURE OR SALE OF ITEMS WITHOUT WRITTEN PERMISSION FROM SCHNEIDER ELECTRIC. THIS DRAWING IS BASED UPON LATEST AVAILABLE INFORMATION AND IS SUBJECT TO CHANGE WITHOUT NOTICE.



TITLE: Busway for Data Center System
Straight Length & Accessories
3PHASE, 400A, 600V
LENGTH-10ft
REAR AND ISO VIEW-2
PROJECT: DRAWINGS SHEET 4 OF 10

DWG NO:	PB4A400A	REV:	0
DRAWN BY:	K.NAGENDRA	05-AUG-14	THIRD ANGLE PROJECTION
ENGINEER:	NARAYAN Nr	05-AUG-14	
APPROVED BY:	AL WARNER	22-SEP-14	



- NOTES:**
1. INSTALLATION SHALL COMPLY WITH ALL APPLICABLE NATIONAL, STATE AND LOCAL CODES.
 2. REFER TO PRODUCT MANUALS PRIOR TO INSTALLATION AND SITE PREPARATION WORK FOR FURTHER DETAILS.
 3. ALL DIMENSIONS ARE IN INCHES [MILLIMETERS].
 4. SOME STRUCTURAL DETAILS HAVE BEEN OMITTED FOR THE PURPOSE OF CLARITY.
 5. WEIGHT OF THE UNIT IS 19.0lbs [8.6kg].

PBCF4A400ALLB

THIS DRAWING AND SPECIFICATIONS HEREIN ARE THE PROPERTY OF SCHNEIDER ELECTRIC AND SHALL NOT BE COPIED, REPRODUCED OR USED IN WHOLE OR IN PART, AS THE BASIS FOR THE MANUFACTURE OR SALE OF ITEMS WITHOUT WRITTEN PERMISSION FROM SCHNEIDER ELECTRIC. THIS DRAWING IS BASED UPON LATEST AVAILABLE INFORMATION AND IS SUBJECT TO CHANGE WITHOUT NOTICE.



TITLE: Busway for Data Center System
 Straight Length & Accessories
 3PHASE, 400A, 600V
 LENGTH-4/10ft
 ELBOW-LEFT

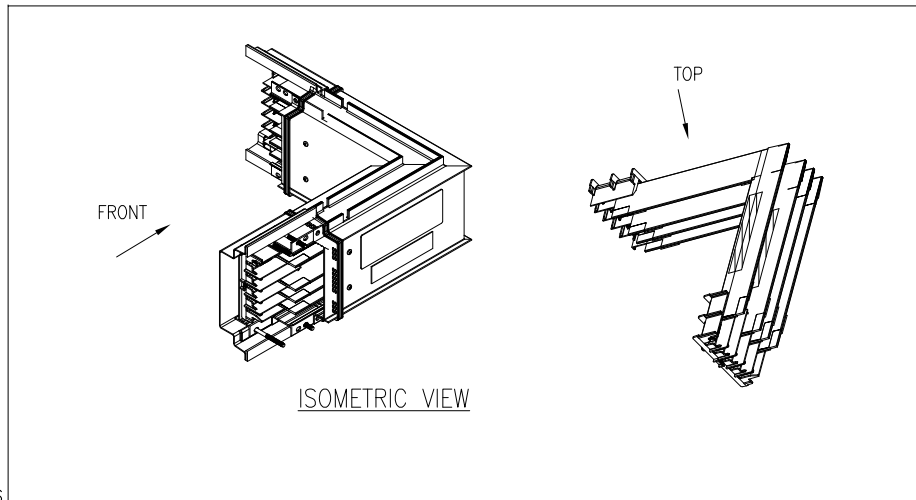
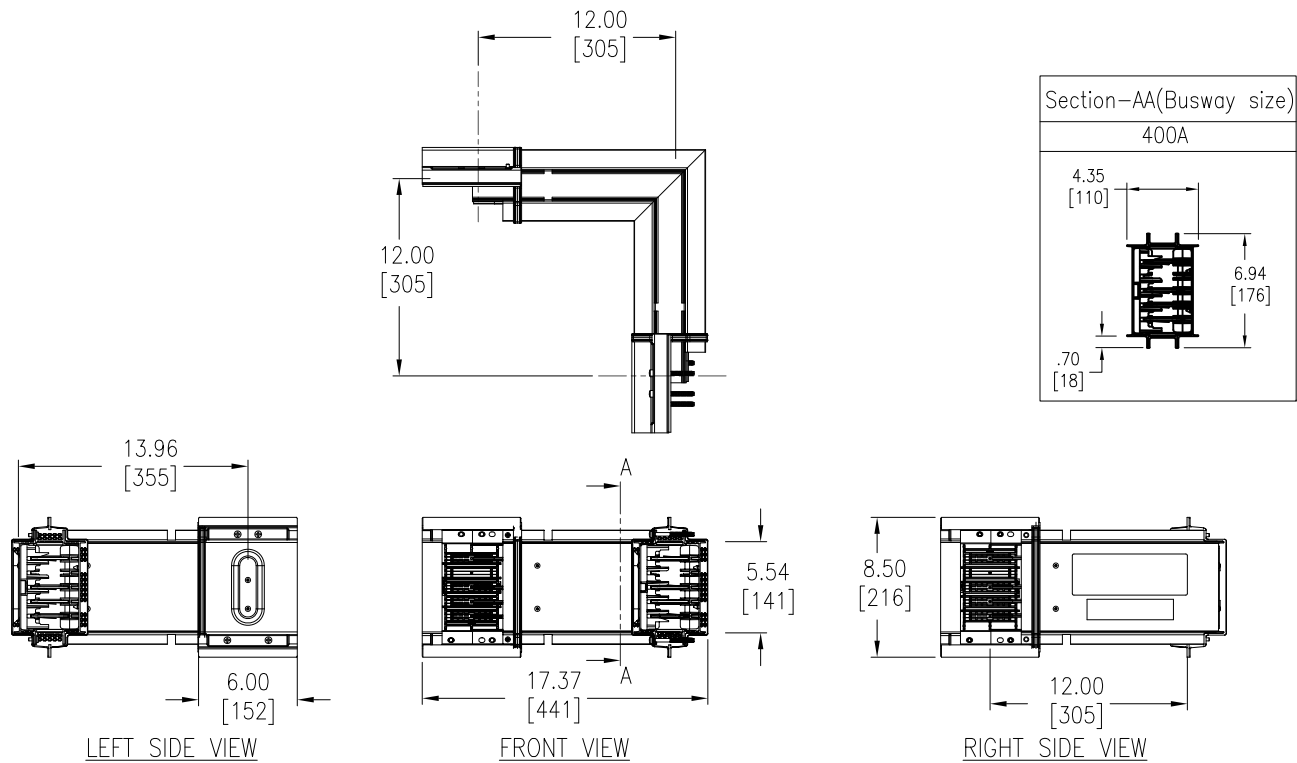
PROJECT: DRAWINGS SHEET 5 OF 10

DWG NO: PB4A400A

DRAWN BY:	K.NAGENDRA	05-AUG-14
ENGINEER:	NARAYAN Nr	05-AUG-14
APPROVED BY:	AL WARNER	22-SEP-14

REV: 0

THIRD ANGLE PROJECTION



NOTES:

1. INSTALLATION SHALL COMPLY WITH ALL APPLICABLE NATIONAL, STATE AND LOCAL CODES.
2. REFER TO PRODUCT MANUALS PRIOR TO INSTALLATION AND SITE PREPARATION WORK FOR FURTHER DETAILS.
3. ALL DIMENSIONS ARE IN INCHES [MILLIMETERS].
4. SOME STRUCTURAL DETAILS HAVE BEEN OMITTED FOR THE PURPOSE OF CLARITY.
5. WEIGHT OF THE UNIT IS 19.0lbs [8.6kg].

PBCF4A400ALRB

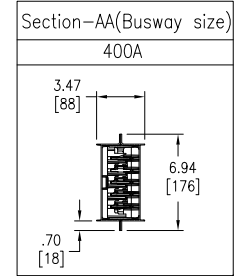
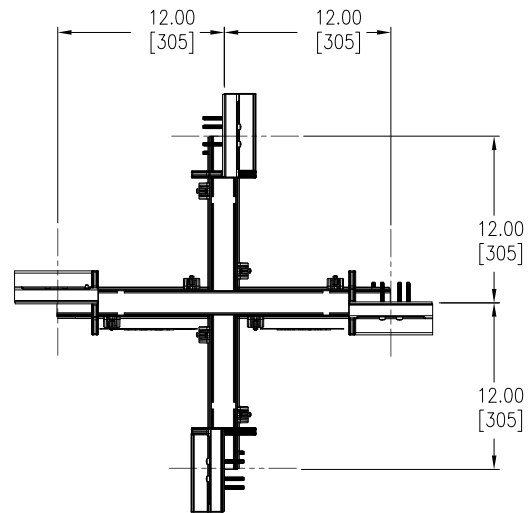
THIS DRAWING AND SPECIFICATIONS HEREIN ARE THE PROPERTY OF SCHNEIDER ELECTRIC AND SHALL NOT BE COPIED, REPRODUCED OR USED IN WHOLE OR IN PART, AS THE BASIS FOR THE MANUFACTURE OR SALE OF ITEMS WITHOUT WRITTEN PERMISSION FROM SCHNEIDER ELECTRIC. THIS DRAWING IS BASED UPON LATEST AVAILABLE INFORMATION AND IS SUBJECT TO CHANGE WITHOUT NOTICE.



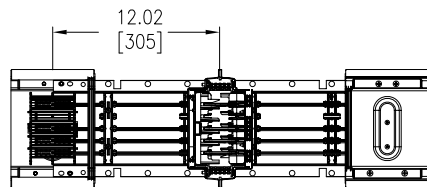
TITLE: Busway for Data Center System
Straight Length & Accessories
3PHASE, 400A, 600V
LENGTH-4/10ft
ELBOW-RIGHT

PROJECT: DRAWINGS SHEET 6 OF 10

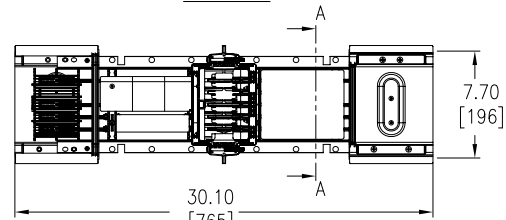
DWG NO:	PB4A400A	REV:	0
DRAWN BY:	K.NAGENDRA	05-AUG-14	THIRD ANGLE PROJECTION
ENGINEER:	NARAYAN Nr	05-AUG-14	
APPROVED BY:	AL WARNER	22-SEP-14	



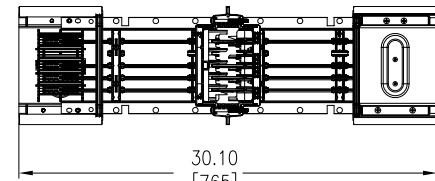
TOP VIEW



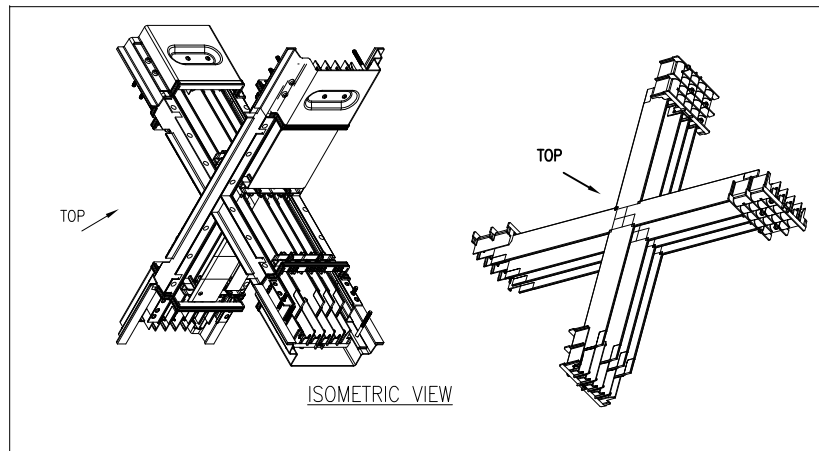
LEFT SIDE VIEW



FRONT VIEW



RIGHT SIDE VIEW



ISOMETRIC VIEW

NOTES:

1. INSTALLATION SHALL COMPLY WITH ALL APPLICABLE NATIONAL, STATE AND LOCAL CODES.
2. REFER TO PRODUCT MANUALS PRIOR TO INSTALLATION AND SITE PREPARATION WORK FOR FURTHER DETAILS.
3. ALL DIMENSIONS ARE IN INCHES [MILLIMETERS].
4. SOME STRUCTURAL DETAILS HAVE BEEN OMITTED FOR THE PURPOSE OF CLARITY.
5. WEIGHT OF THE UNIT IS 37.0lbs [16.8kg].

PBCF4A400ACRB

THIS DRAWING AND SPECIFICATIONS HEREIN ARE THE PROPERTY OF SCHNEIDER ELECTRIC AND SHALL NOT BE COPIED, REPRODUCED OR USED IN WHOLE OR IN PART, AS THE BASIS FOR THE MANUFACTURE OR SALE OF ITEMS WITHOUT WRITTEN PERMISSION FROM SCHNEIDER ELECTRIC. THIS DRAWING IS BASED UPON LATEST AVAILABLE INFORMATION AND IS SUBJECT TO CHANGE WITHOUT NOTICE.

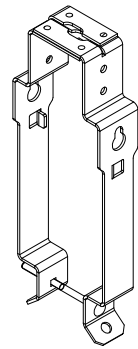
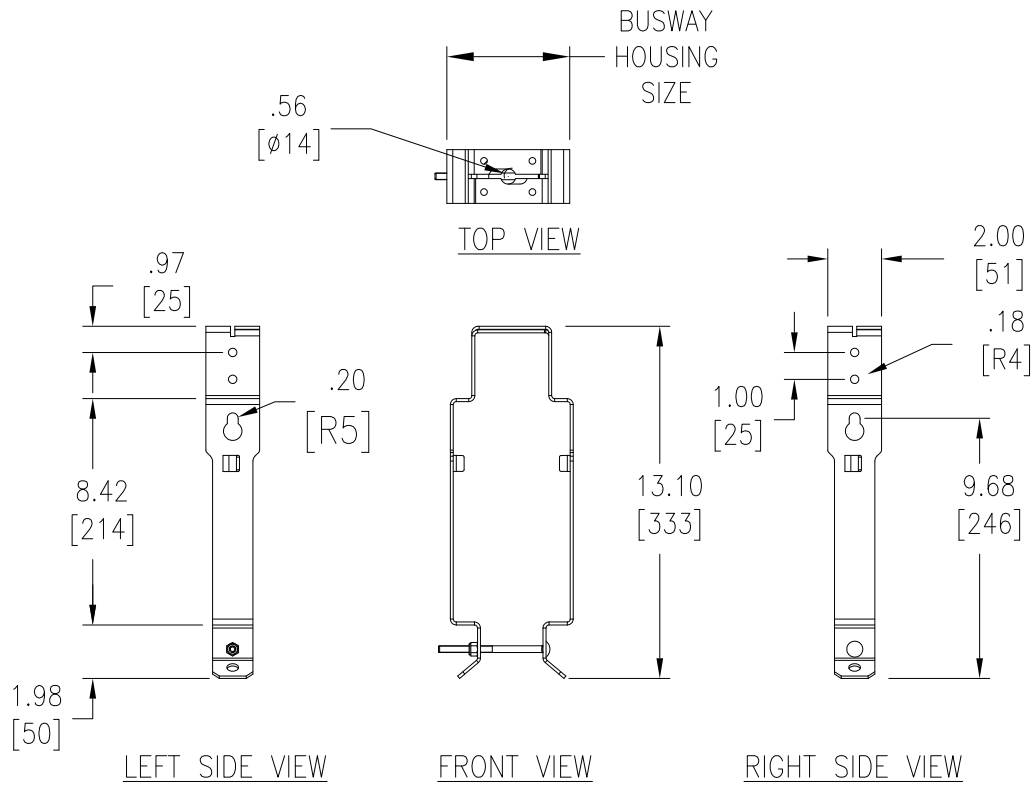


TITLE: Busway for Data Center System
Straight Length & Accessories
3PHASE, 400A, 600V
LENGTH-4/10ft
CROSS

PROJECT: DRAWINGS SHEET 7 OF 10

DWG NO:	PB4A400A	REV:	0
DRAWN BY:	K.NAGENDRA	DATE:	05-AUG-14
ENGINEER:	NARAYAN Nr	DATE:	05-AUG-14
APPROVED BY:	AL WARNER	DATE:	22-SEP-14

THIRD ANGLE PROJECTION



ISOMETRIC VIEW

PB400FH

NOTES:

1. INSTALLATION SHALL COMPLY WITH ALL APPLICABLE NATIONAL, STATE AND LOCAL CODES.
2. REFER TO PRODUCT MANUALS PRIOR TO INSTALLATION AND SITE PREPARATION WORK FOR FURTHER DETAILS.
3. ALL DIMENSIONS ARE IN INCHES [MILLIMETERS].
4. SOME STRUCTURAL DETAILS HAVE BEEN OMITTED FOR THE PURPOSE OF CLARITY.
5. WEIGHT OF THE UNIT IS 2.0lbs [0.9kg].

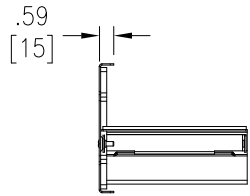
THIS DRAWING AND SPECIFICATIONS HEREIN ARE THE PROPERTY OF SCHNEIDER ELECTRIC AND SHALL NOT BE COPIED, REPRODUCED OR USED IN WHOLE OR IN PART, AS THE BASIS FOR THE MANUFACTURE OR SALE OF ITEMS WITHOUT WRITTEN PERMISSION FROM SCHNEIDER ELECTRIC. THIS DRAWING IS BASED UPON LATEST AVAILABLE INFORMATION AND IS SUBJECT TO CHANGE WITHOUT NOTICE.



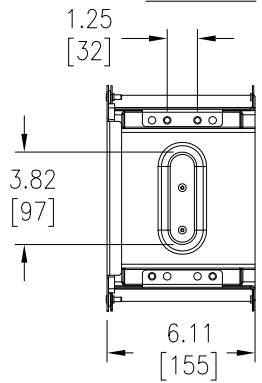
TITLE: Busway for Data Center System
Straight Length & Accessories
3PHASE, 400A, 600V
LENGTH-4/10ft
CEILING MOUNTING KIT(HANGER)

DWG NO:	PB4A400A	REV:	0
DRAWN BY:	K.NAGENDRA	05-AUG-14	THIRD ANGLE PROJECTION
ENGINEER:	NARAYAN Nr	05-AUG-14	
APPROVED BY:	AL WARNER	22-SEP-14	

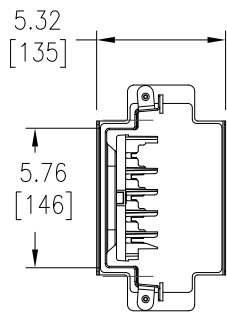
END CLOSURE-LEFT



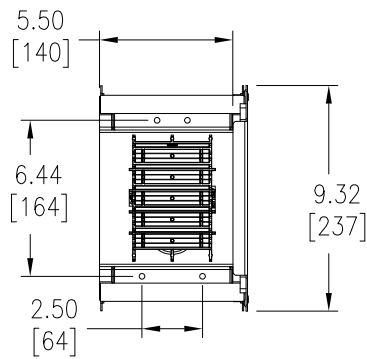
TOP VIEW



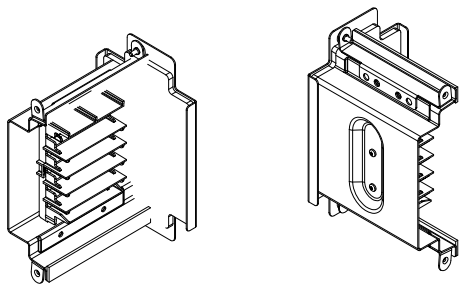
FRONT VIEW



RIGHT SIDE VIEW

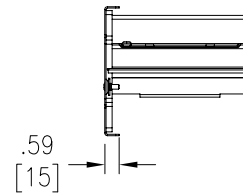


REAR VIEW

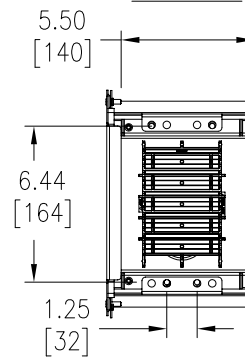


ISOMETRIC VIEW

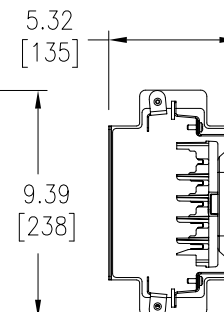
END CLOSURE-RIGHT



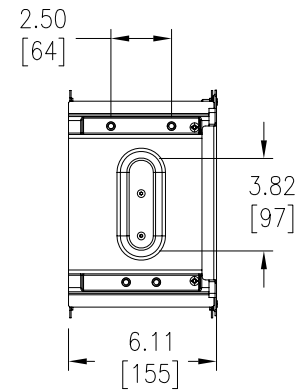
TOP VIEW



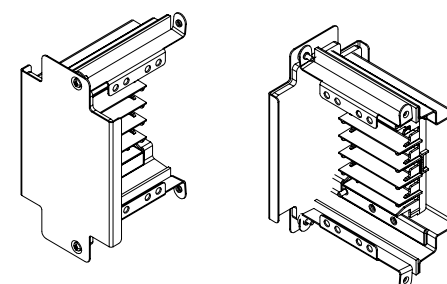
FRONT VIEW



RIGHT SIDE VIEW



REAR VIEW



ISOMETRIC VIEW

NOTES:

1. INSTALLATION SHALL COMPLY WITH ALL APPLICABLE NATIONAL, STATE AND LOCAL CODES.
2. REFER TO PRODUCT MANUALS PRIOR TO INSTALLATION AND SITE PREPARATION WORK FOR FURTHER DETAILS.
3. ALL DIMENSIONS ARE IN INCHES [MILLIMETERS].
4. SOME STRUCTURAL DETAILS HAVE BEEN OMITTED FOR THE PURPOSE OF CLARITY.
5. WEIGHT OF THE UNIT IS 5.0lbs [2.3kg].

PB400AEC

THIS DRAWING AND SPECIFICATIONS HEREIN ARE THE PROPERTY OF SCHNEIDER ELECTRIC AND SHALL NOT BE COPIED, REPRODUCED OR USED IN WHOLE OR IN PART, AS THE BASIS FOR THE MANUFACTURE OR SALE OF ITEMS WITHOUT WRITTEN PERMISSION FROM SCHNEIDER ELECTRIC. THIS DRAWING IS BASED UPON LATEST AVAILABLE INFORMATION AND IS SUBJECT TO CHANGE WITHOUT NOTICE.



TITLE: Busway for Data Center System
Straight Length & Accessories
3PHASE, 400A, 600V
LENGTH-4/10ft
END CLOSURE

PROJECT: DRAWINGS SHEET 9 OF 10

DWG NO: PB4A400A

DRAWN BY: K.NAGENDRA 05-AUG-14

ENGINEER: NARAYAN Nr 05-AUG-14

APPROVED BY: AL WARNER 22-SEP-14

REV: 0

THIRD ANGLE PROJECTION

Electrical Data
Short Circuit Rating

Product	Short Circuit Current Rating KA, RMS Symmetrical		Impedence ¹ Line-to-Neutral (milliohms/100ft)			DC Resistance of Aluminium Housing Ground (milliohms/100ft)
	UL 3-Cycle Test	Series-Connected with Fuse ²	R	X60 Hz	X50 Hz	
400A	35kA	200kA	3.74	2.19	1.83	0.54

1. Busway impedance and housing ground resistance are at 176° F (80° C) operating temperature.
2. Busway connected in series with a Class J or Class T fuse.

Voltage Drop

Product	Voltage Drop (60Hz @ Rated Load)					
	(Average phase Line-to-Line Voltage Drop in Volts/100ft for Varying Power Factors)					
	100%	90%	80%	70%	60%	50%
225A	2.494	2.923	2.929	2.858	2.742	2.596

Notes

1. Values shown are based on single concentrated load at the end of a Busway run. For distributed loading, divide the values shown by two(2)
2. For Balanced 3-phase line-to-line voltage drop of 4-wire busway, use values from the above table.
3. For Balanced 3-phase line-to-neutral voltage drop, multiply values by 0.577.
4. For single-phase line to neutral voltage drop, multiply values by 1.15
5. For other than rated current, multiply values by the ratio of: Actual Current divided by Rated Current
6. For total voltage drop, multiply values by the ratio of: Actual Length divided by 100ft
7. Voltage drop calculations for 50Hz can be made by substituting the appropriate value from above Table. For other frequency values, contact Schneider Electric.

HOUSING GROUND IMPEDANCE ANALYSIS

BUSWAY AMPERAGE	CROSS SECTIONAL AREA (INCH ²)		RATIO BAR RESISTANCE TO GROUND RESISTANCE @20°C μΩ/100ft		RATIO BAR RESISTANCE TO GROUND RESISTANCE @80°C μΩ/100ft ¹	
	BUSBAR	HOUSING	BUSBAR	HOUSING	BUSBAR	HOUSING
400	0.28125	1.00103	2.87	1.54	3.4	1.8

1. FOR INFORMATION PURPOSE ONLY. THE MAXIMUM ALLOWABLE TEMPERATURE RISE IS 75°C DUE TO CIRCUIT BREAKER TERMINATION RATINGS.

NOTES:

1. INSTALLATION SHALL COMPLY WITH ALL APPLICABLE NATIONAL, STATE AND LOCAL CODES.
2. REFER TO PRODUCT MANUALS PRIOR TO INSTALLATION AND SITE PREPARATION WORK FOR FURTHER DETAILS. ONLY TRAINED ELECTRICIAN MUST PERFORM WORK ON THIS EQUIPMENT.

THIS DRAWING AND SPECIFICATIONS HEREIN ARE THE PROPERTY OF SCHNEIDER ELECTRIC AND SHALL NOT BE COPIED, REPRODUCED OR USED IN WHOLE OR IN PART, AS THE BASIS FOR THE MANUFACTURE OR SALE OF ITEMS WITHOUT WRITTEN PERMISSION FROM SCHNEIDER ELECTRIC. THIS DRAWING IS BASED UPON LATEST AVAILABLE INFORMATION AND IS SUBJECT TO CHANGE WITHOUT NOTICE.



TITLE: Busway for Data Center System
Straight Length & Accessories
3PHASE, 400A, 600V
LENGTH-4ft
TECHNICAL DATA

DWG NO:	PB4A400A		REV:	0
DRAWN BY:	K.NAGENDRA	06-AUG-14	THIRD	
ENGINEER:	NARAYAN Nr	06-AUG-14	ANGLE	
PROJECT: DRAWINGS	SHEET 10 OF 10	APPROVED BY: AL WARNER	22-SEP-14	PROJECTION