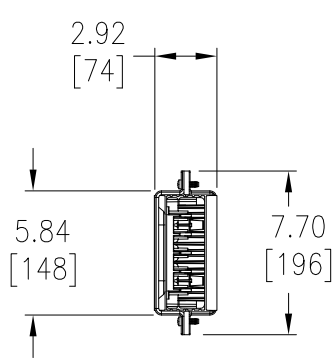
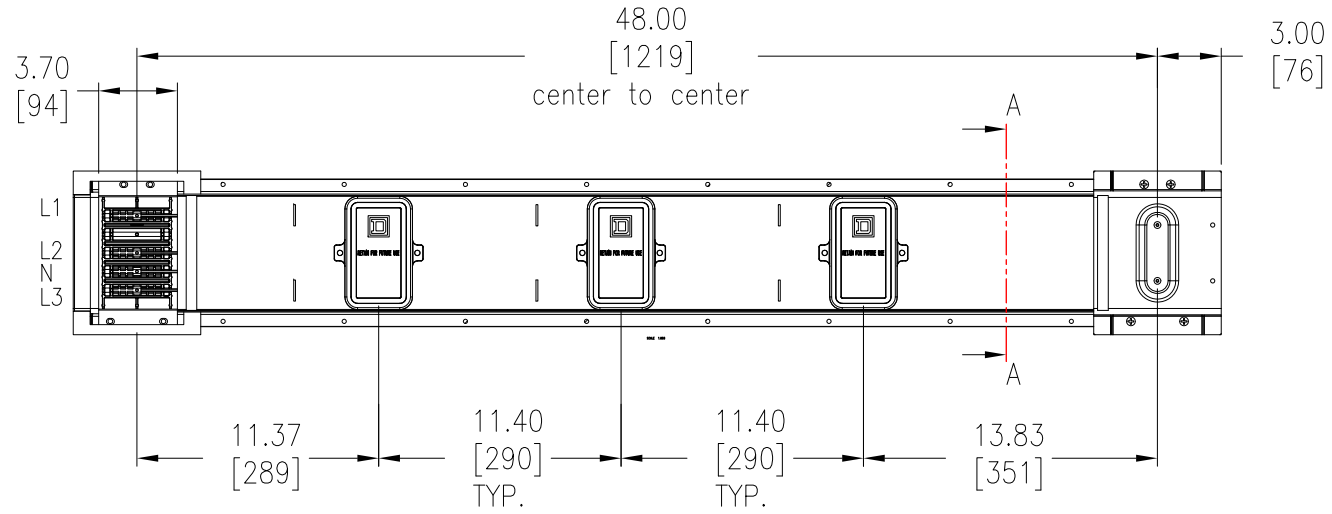


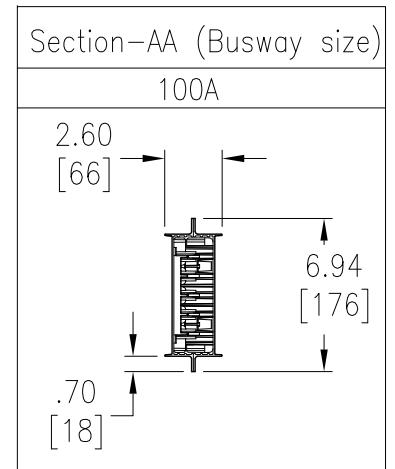
TOP VIEW



LEFT VIEW



FRONT VIEW



NOTES:

1. COMPLY WITH ALL APPLICABLE NATIONAL, STATE AND LOCAL CODES.
2. REFER TO PRODUCT MANUALS PRIOR TO INSTALLATION AND SITE PREPARATION WORK FOR FURTHER DETAILS.
ONLY TRAINED ELECTRICIAN MUST PERFORM WORK ON THIS EQUIPMENT.
3. TURN OFF POWER TO BUSWAY BEFORE INSTALLING, REMOVING, OR WORKING ON THIS EQUIPMENT.
4. DO NOT INSTALL VERTICALLY, POWERBUS IS NOT SUITABLE FOR VERTICAL MOUNTING.
5. AMBIENT TEMPERATURE LIMITS FOR BUSWAY ARE -10°C THROUGH +40°C (-22°F THROUGH 104°F).
VERIFY THAT THE OPERATING ENVIRONMENT TEMPERATURES ARE WITHIN THE RANGE REQUIRED BY THE BUSWAY BEING INSTALLED.
6. PROVIDE SUFFICIENT HORIZONTAL AND VERTICAL CLEARANCE FROM WALLS AND CEILINGS TO PROVIDE EASY ACCESS TO JOINTS AND SUFFICIENT ROOM FOR TAP OFF UNIT INSTALLATION.
7. ENSURE THAT ALL JOINT CONTACT SURFACES ARE FREE OF CONTAMINANTS.
8. VERIFY THAT THE SYSTEM PHASING MATCHES THE BUSWAY PHASING.
9. ALL DIMENSIONS ARE IN INCHES [MILLIMETERS]
10. AMPERAGE, WEIGHT & BUSBAR SIZE OF THE UNIT:

PBCE4A100ST048

Product (Amperage)	Weight (Based on Busbar Configuration) 4 bar - 4A	Busbar Size (thickness x width)
100A	3.2 lb/ft (1.45kg/m)	.125 x 0.5 inches (3 x 13mm)

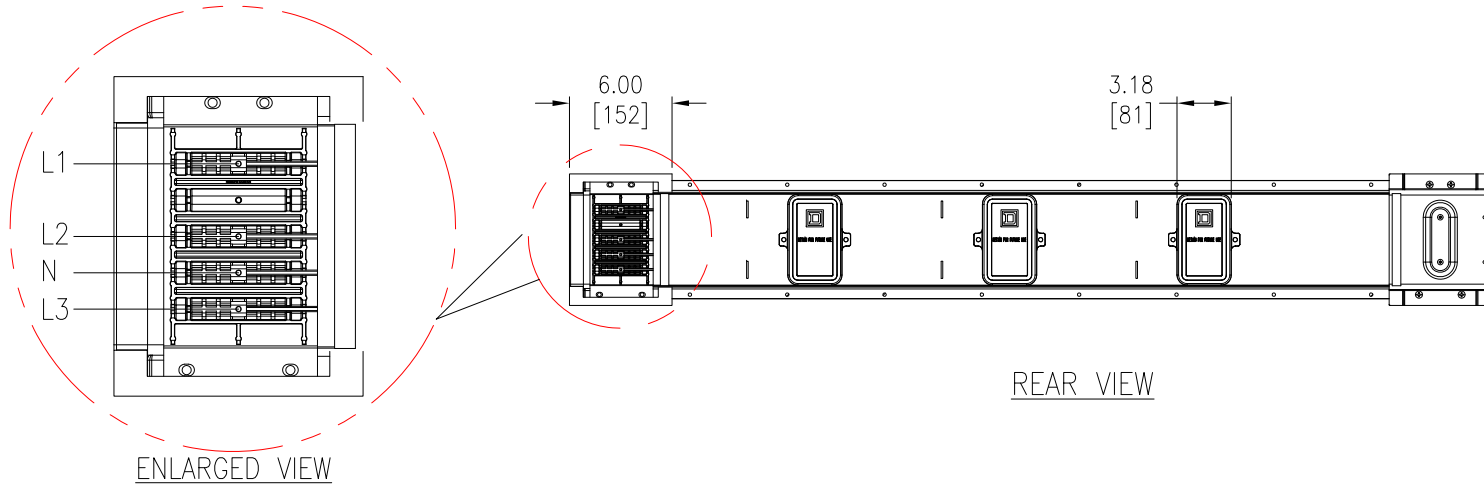
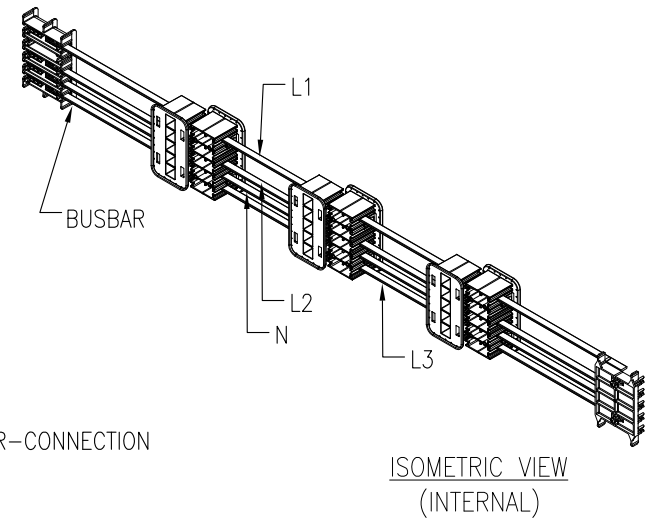
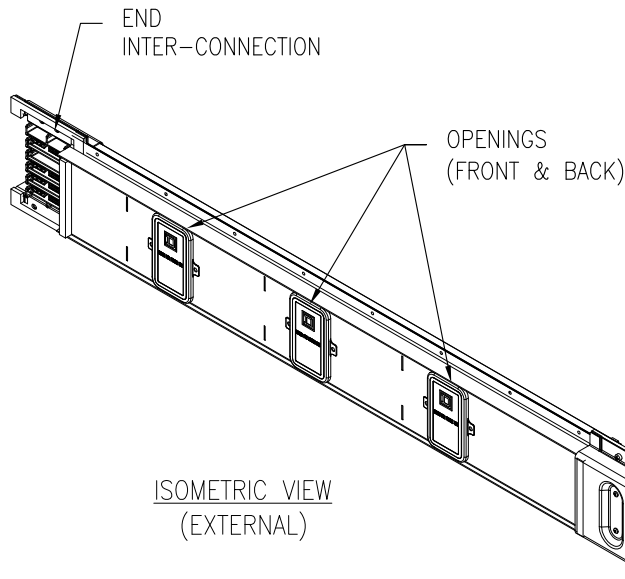
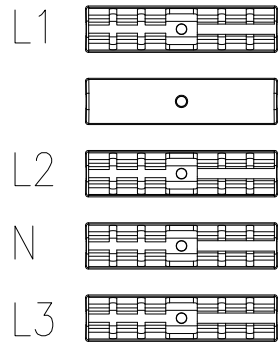
THIS DRAWING AND SPECIFICATIONS HEREIN ARE THE PROPERTY OF SCHNEIDER ELECTRIC AND SHALL NOT BE COPIED, REPRODUCED OR USED IN WHOLE OR IN PART, AS THE BASIS FOR THE MANUFACTURE OR SALE OF ITEMS WITHOUT WRITTEN PERMISSION FROM SCHNEIDER ELECTRIC. THIS DRAWING IS BASED UPON LATEST AVAILABLE INFORMATION AND IS SUBJECT TO CHANGE WITHOUT NOTICE.



TITLE: iBusway for Data Center System
Straight Length & Accessories
3PHASE, 100A, 600V
LENGTH-4ft
MAIN MECHANICAL-1
PROJECT: DRAWINGS SHEET 1 OF 10

DWG NO: PB4A100
REV: 0
DRAWN BY: K.NAGENDRA 10-DEC-12 THIRD ANGLE
ENGINEER: SUNDAR KANNAN 10-DEC-12 PROJECTION
APPROVED BY: A.WARNER 25-JAN-13

TAP OFF JOINT
JAW CONFIGURATION (4A)



- NOTES:**
1. COMPLY WITH ALL APPLICABLE NATIONAL, STATE AND LOCAL CODES.
 2. REFER TO PRODUCT MANUALS PRIOR TO INSTALLATION AND SITE PREPARATION WORK FOR FURTHER DETAILS.
 3. ALL DIMENSIONS ARE IN INCHES [MILLIMETERS].
 4. SOME STRUCTURAL DETAILS HAVE BEEN OMITTED FOR THE PURPOSE OF CLARITY.

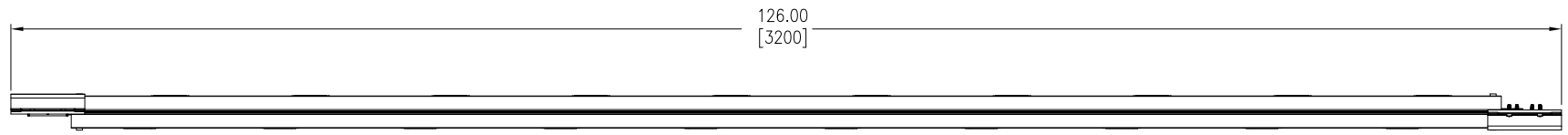
PBCE4A100ST048

THIS DRAWING AND SPECIFICATIONS HEREIN ARE THE PROPERTY OF SCHNEIDER ELECTRIC AND SHALL NOT BE COPIED, REPRODUCED OR USED IN WHOLE OR IN PART, AS THE BASIS FOR THE MANUFACTURE OR SALE OF ITEMS WITHOUT WRITTEN PERMISSION FROM SCHNEIDER ELECTRIC. THIS DRAWING IS BASED UPON LATEST AVAILABLE INFORMATION AND IS SUBJECT TO CHANGE WITHOUT NOTICE.

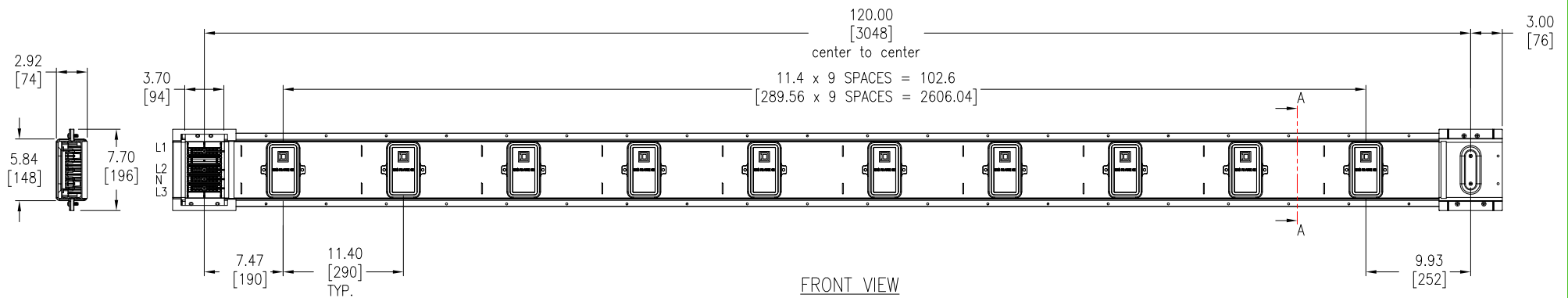


TITLE: Busway for Data Center System
Straight Length & Accessories
3PHASE, 100A, 600V
LENGTH-4ft
REAR AND ISO VIEW-1
PROJECT: DRAWINGS SHEET 2 OF 10

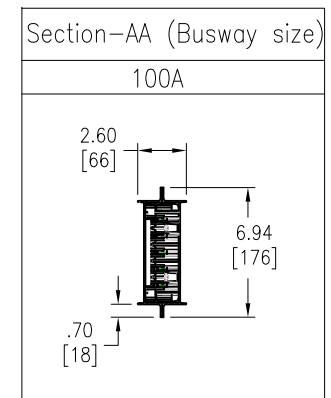
DWG NO:	PB4A100	REV:	0
DRAWN BY:	K.NAGENDRA	10-DEC-12	THIRD ANGLE PROJECTION
ENGINEER:	SUNDAR KANNAN	10-DEC-12	
APPROVED BY:	A.WARNER	25-JAN-13	



TOP VIEW



FRONT VIEW



NOTES:

1. COMPLY WITH ALL APPLICABLE NATIONAL, STATE AND LOCAL CODES.
2. REFER TO PRODUCT MANUALS PRIOR TO INSTALLATION AND SITE PREPARATION WORK FOR FURTHER DETAILS.
3. ALL DIMENSIONS ARE IN INCHES [MILLIMETERS].
4. AMPERAGE, WEIGHT & BUSBAR SIZE OF THE UNIT:

Product (Amperage)	Weight (Based on Busbar Configuration) 4 bar - 4A	Busbar Size (thickness x width)
100A	3.2 lb/ft (1.45kg/m)	.125 x 0.5 inches (3 x 13mm)

PBCE4A100ST120

THIS DRAWING AND SPECIFICATIONS HEREIN ARE THE PROPERTY OF SCHNEIDER ELECTRIC AND SHALL NOT BE COPIED, REPRODUCED OR USED IN WHOLE OR IN PART, AS THE BASIS FOR THE MANUFACTURE OR SALE OF ITEMS WITHOUT WRITTEN PERMISSION FROM SCHNEIDER ELECTRIC. THIS DRAWING IS BASED UPON LATEST AVAILABLE INFORMATION AND IS SUBJECT TO CHANGE WITHOUT NOTICE.

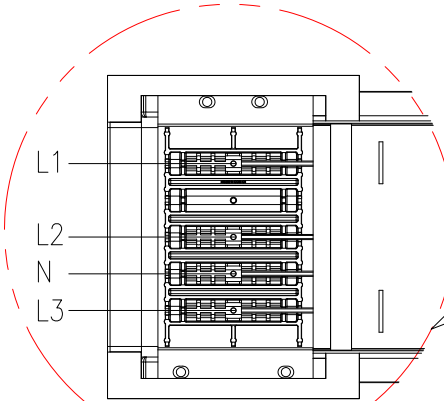
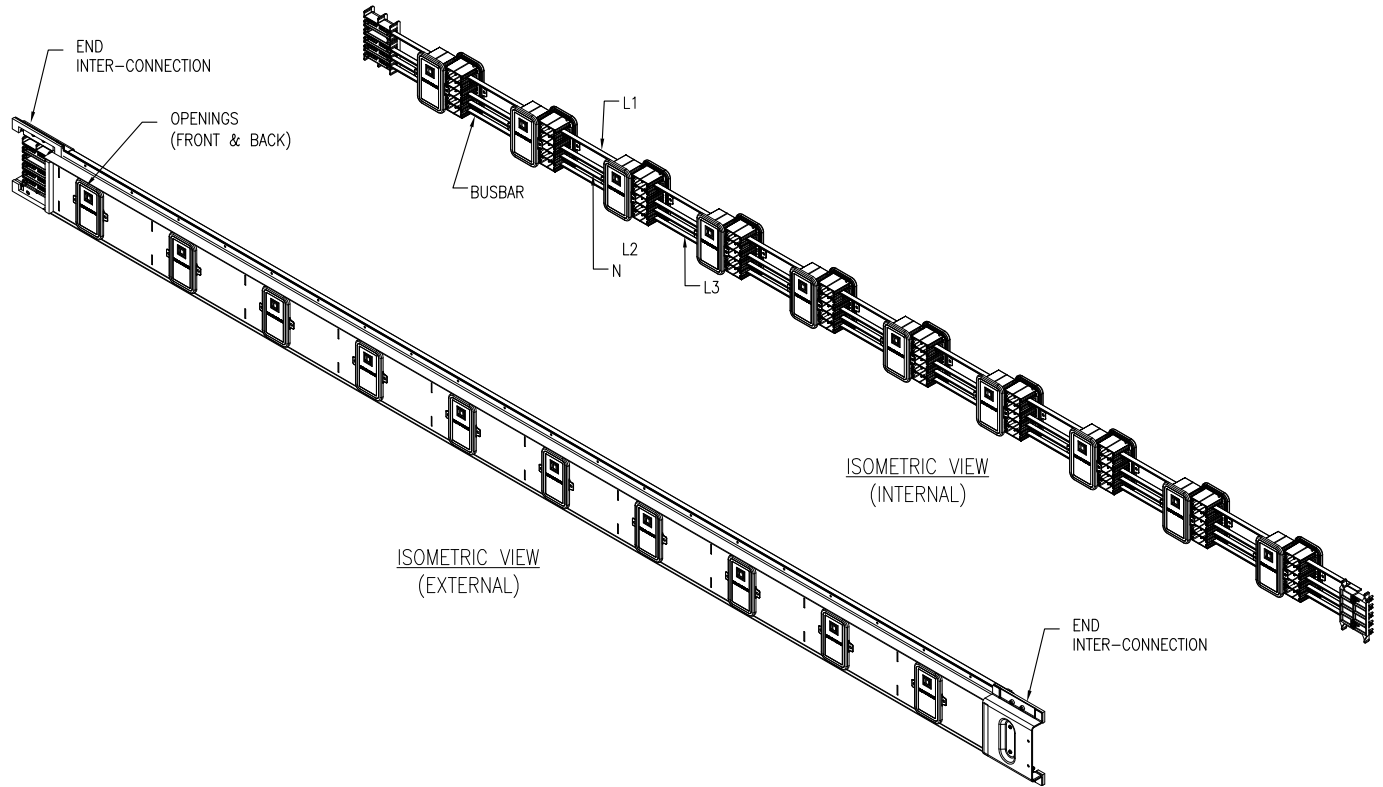
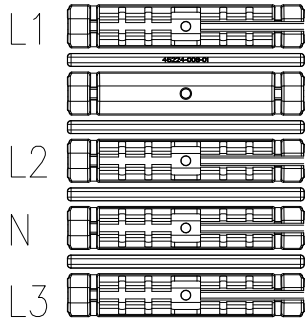


TITLE: iBusway for Data Center System
Straight Length & Accessories
3PHASE, 100A, 600V
LENGTH-10ft
MAIN MECHANICAL-2
PROJECT: DRAWINGS SHEET 3 OF 10

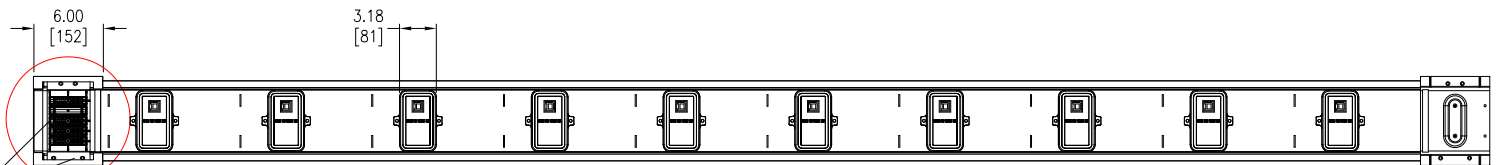
DWG NO: PB4A100
DRAWN BY: K.NAGENDRA 10-DEC-12
ENGINEER: SUNDAR KANNAN 10-DEC-12
APPROVED BY: A.WARNER 25-JAN-13

REV: 0
THIRD ANGLE PROJECTION

TAP OFF JOINT
JAW CONFIGURATION (4A)



ENLARGED VIEW



REAR VIEW

NOTES:

1. COMPLY WITH ALL APPLICABLE NATIONAL, STATE AND LOCAL CODES.
2. REFER TO PRODUCT MANUALS PRIOR TO INSTALLATION AND SITE PREPARATION WORK FOR FURTHER DETAILS.
3. ALL DIMENSIONS ARE IN INCHES [MILLIMETERS].
4. SOME STRUCTURAL DETAILS HAVE BEEN OMITTED FOR THE PURPOSE OF CLARITY.

PBCE4A100ST120

THIS DRAWING AND SPECIFICATIONS HEREIN ARE THE PROPERTY OF SCHNEIDER ELECTRIC AND SHALL NOT BE COPIED, REPRODUCED OR USED IN WHOLE OR IN PART, AS THE BASIS FOR THE MANUFACTURE OR SALE OF ITEMS WITHOUT WRITTEN PERMISSION FROM SCHNEIDER ELECTRIC. THIS DRAWING IS BASED UPON LATEST AVAILABLE INFORMATION AND IS SUBJECT TO CHANGE WITHOUT NOTICE.



TITLE: Busway for Data Center System
Straight Length & Accessories
3PHASE, 100A, 600V
LENGTH-10ft
REAR AND ISO VIEW-2

DWG NO: PB4A100

REV. 0

DRAWN BY: K.NAGENDRA 10-DEC-12

THIRD

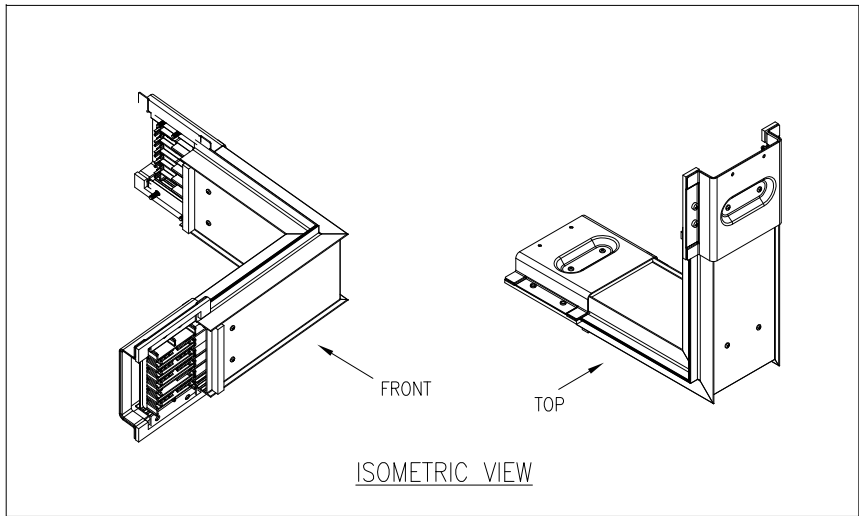
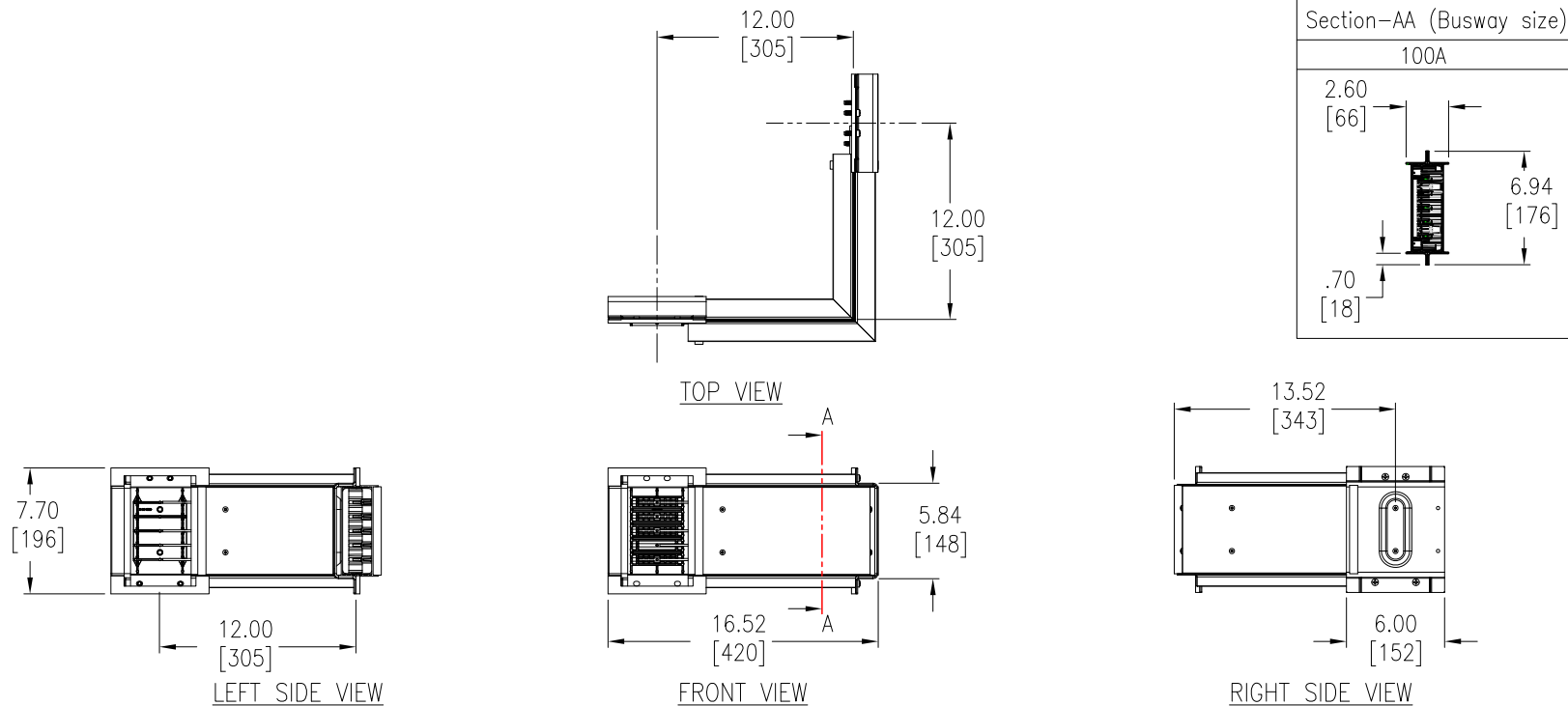
ENGINEER: SUNDAR KANNAN 10-DEC-12

ANGLE

PROJECT: DRAWINGS SHEET 4 OF 10

APPROVED BY: A.WARNER 25-JAN-13

PROJECTION



NOTES:

1. COMPLY WITH ALL APPLICABLE NATIONAL, STATE AND LOCAL CODES.
2. REFER TO PRODUCT MANUALS PRIOR TO INSTALLATION AND SITE PREPARATION WORK FOR FURTHER DETAILS.
3. ALL DIMENSIONS ARE IN INCHES [MILLIMETERS].
4. SOME STRUCTURAL DETAILS HAVE BEEN OMITTED FOR THE PURPOSE OF CLARITY.
5. WEIGHT OF THE UNIT IS 6.40lbs [2.91kg]

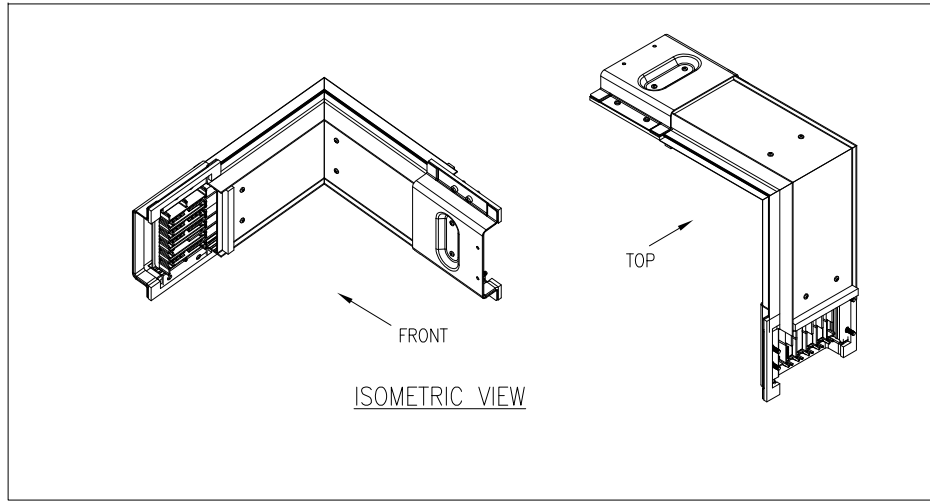
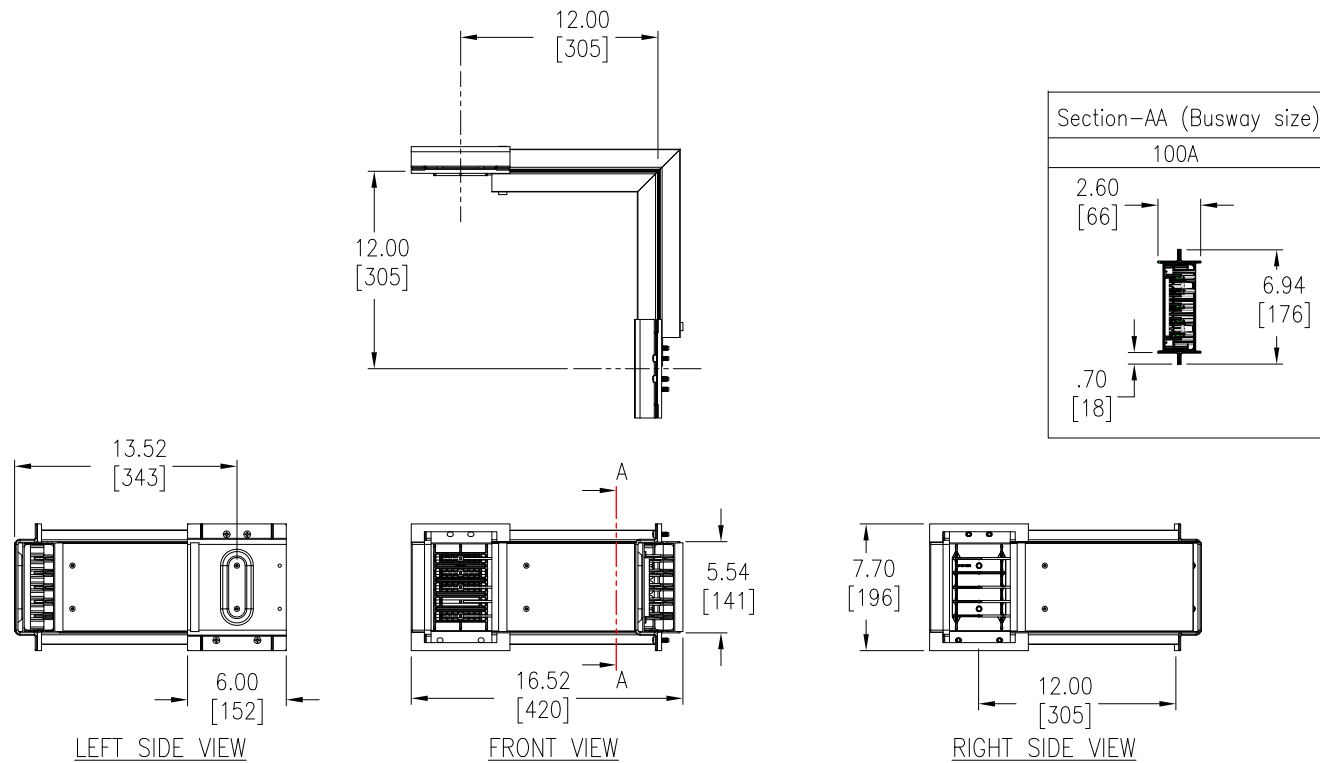
PBCF4A100LLB

THIS DRAWING AND SPECIFICATIONS HEREIN ARE THE PROPERTY OF SCHNEIDER ELECTRIC AND SHALL NOT BE COPIED, REPRODUCED OR USED IN WHOLE OR IN PART, AS THE BASIS FOR THE MANUFACTURE OR SALE OF ITEMS WITHOUT WRITTEN PERMISSION FROM SCHNEIDER ELECTRIC. THIS DRAWING IS BASED UPON LATEST AVAILABLE INFORMATION AND IS SUBJECT TO CHANGE WITHOUT NOTICE.



TITLE: Busway for Data Center System
 Straight Length & Accessories
 3PHASE, 100A, 600V
 LENGTH-4/10ft
 ELBOW-LEFT

DWG NO:	PB4A100	REV:	0
DRAWN BY:	K.NAGENDRA	10-DEC-12	THIRD ANGLE PROJECTION
ENGINEER:	SUNDAR KANNAN	10-DEC-12	
APPROVED BY:	A.WARNER	25-JAN-13	



- NOTES:**
1. COMPLY WITH ALL APPLICABLE NATIONAL, STATE AND LOCAL CODES.
 2. REFER TO PRODUCT MANUALS PRIOR TO INSTALLATION AND SITE PREPARATION WORK FOR FURTHER DETAILS.
 3. ALL DIMENSIONS ARE IN INCHES [MILLIMETERS].
 4. SOME STRUCTURAL DETAILS HAVE BEEN OMITTED FOR THE PURPOSE OF CLARITY.
 5. WEIGHT OF THE UNIT IS 6.40lbs [2.91kg]

PBCF4A100LRB

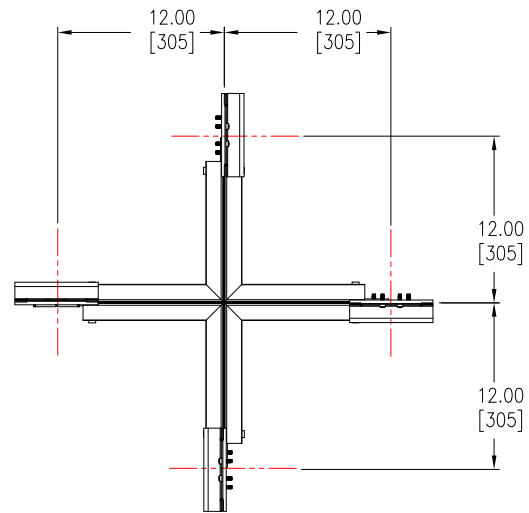
THIS DRAWING AND SPECIFICATIONS HEREIN ARE THE PROPERTY OF SCHNEIDER ELECTRIC AND SHALL NOT BE COPIED, REPRODUCED OR USED IN WHOLE OR IN PART, AS THE BASIS FOR THE MANUFACTURE OR SALE OF ITEMS WITHOUT WRITTEN PERMISSION FROM SCHNEIDER ELECTRIC. THIS DRAWING IS BASED UPON LATEST AVAILABLE INFORMATION AND IS SUBJECT TO CHANGE WITHOUT NOTICE.



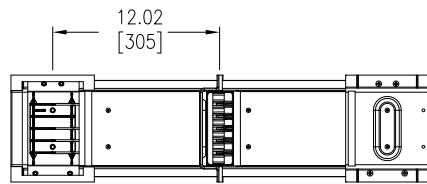
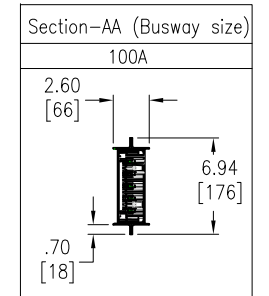
TITLE: Busway for Data Center System
 Straight Length & Accessories
 3PHASE, 100A, 600V
 LENGTH-4/10ft
 ELBOW-RIGHT

PROJECT: DRAWINGS SHEET 6 OF 11

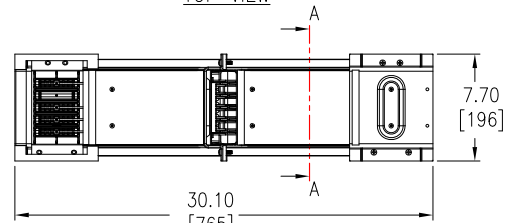
DWG NO:	PB4A100	REV:	0
DRAWN BY:	K.NAGENDRA	10-DEC-12	THIRD ANGLE PROJECTION
ENGINEER:	SUNDAR KANNAN	10-DEC-12	
APPROVED BY:	A.WARNER	25-JAN-13	



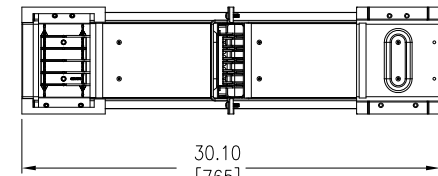
TOP VIEW



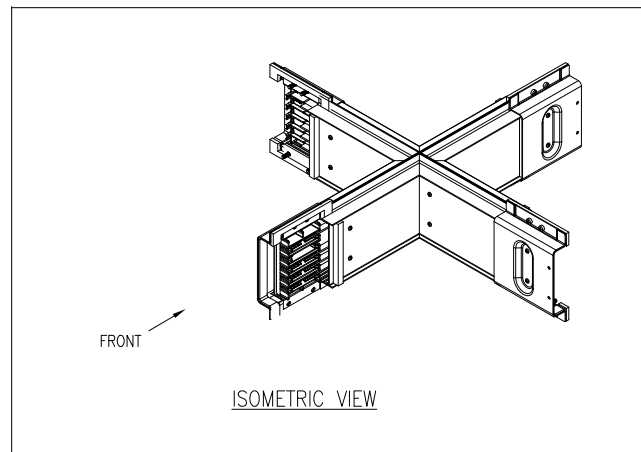
LEFT SIDE VIEW



FRONT VIEW



RIGHT SIDE VIEW



ISOMETRIC VIEW

PBCF4A100CRB

NOTES:

1. COMPLY WITH ALL APPLICABLE NATIONAL, STATE AND LOCAL CODES.
2. REFER TO PRODUCT MANUALS PRIOR TO INSTALLATION AND SITE PREPARATION WORK FOR FURTHER DETAILS.
3. ALL DIMENSIONS ARE IN INCHES [MILLIMETERS].
4. SOME STRUCTURAL DETAILS HAVE BEEN OMITTED FOR THE PURPOSE OF CLARITY.
5. WEIGHT OF THE UNIT IS 12.80lbs [5.82kg]

THIS DRAWING AND SPECIFICATIONS HEREIN ARE THE PROPERTY OF SCHNEIDER ELECTRIC AND SHALL NOT BE COPIED, REPRODUCED OR USED IN WHOLE OR IN PART, AS THE BASIS FOR THE MANUFACTURE OR SALE OF ITEMS WITHOUT WRITTEN PERMISSION FROM SCHNEIDER ELECTRIC. THIS DRAWING IS BASED UPON LATEST AVAILABLE INFORMATION AND IS SUBJECT TO CHANGE WITHOUT NOTICE.

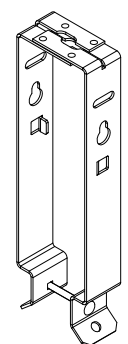
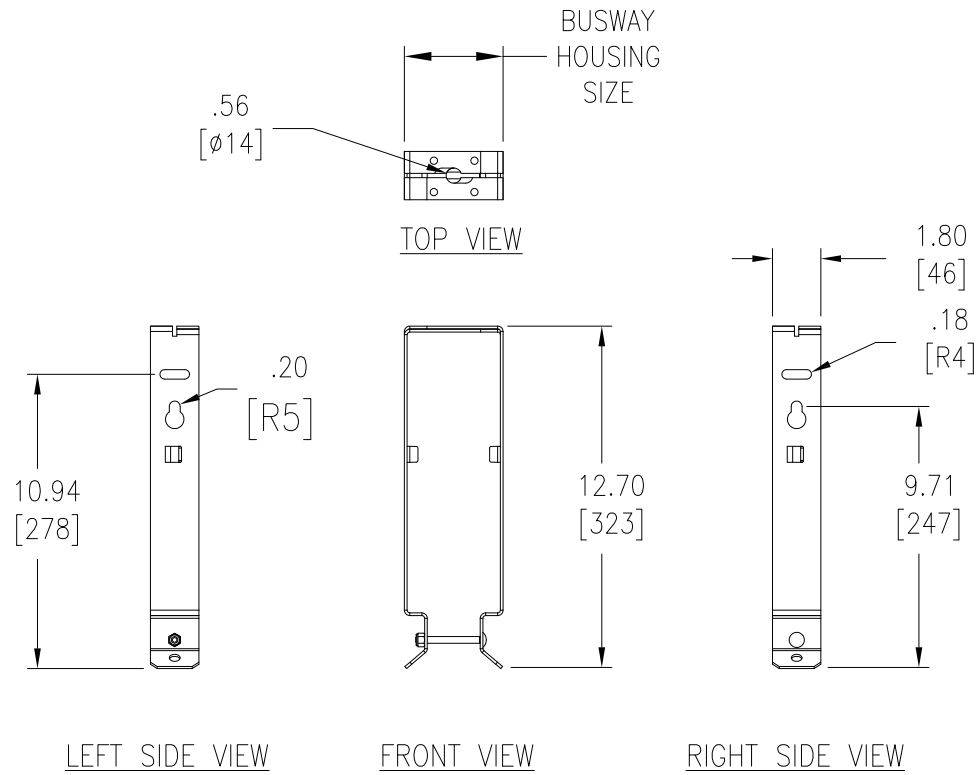


TITLE: Busway for Data Center System
Straight Length & Accessories
3PHASE, 100A, 600V
LENGTH-4/10ft
CROSS

PROJECT: DRAWINGS SHEET 7 OF 10

DWG NO: PB4A100
DRAWN BY: K.NAGENDRA 10-DEC-12
ENGINEER: SUNDAR KANNAN 10-DEC-12
APPROVED BY: A.WARNER 25-JAN-13

REV. 0
THIRD ANGLE PROJECTION



ISOMETRIC VIEW

PB100FH

NOTES:

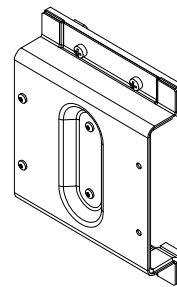
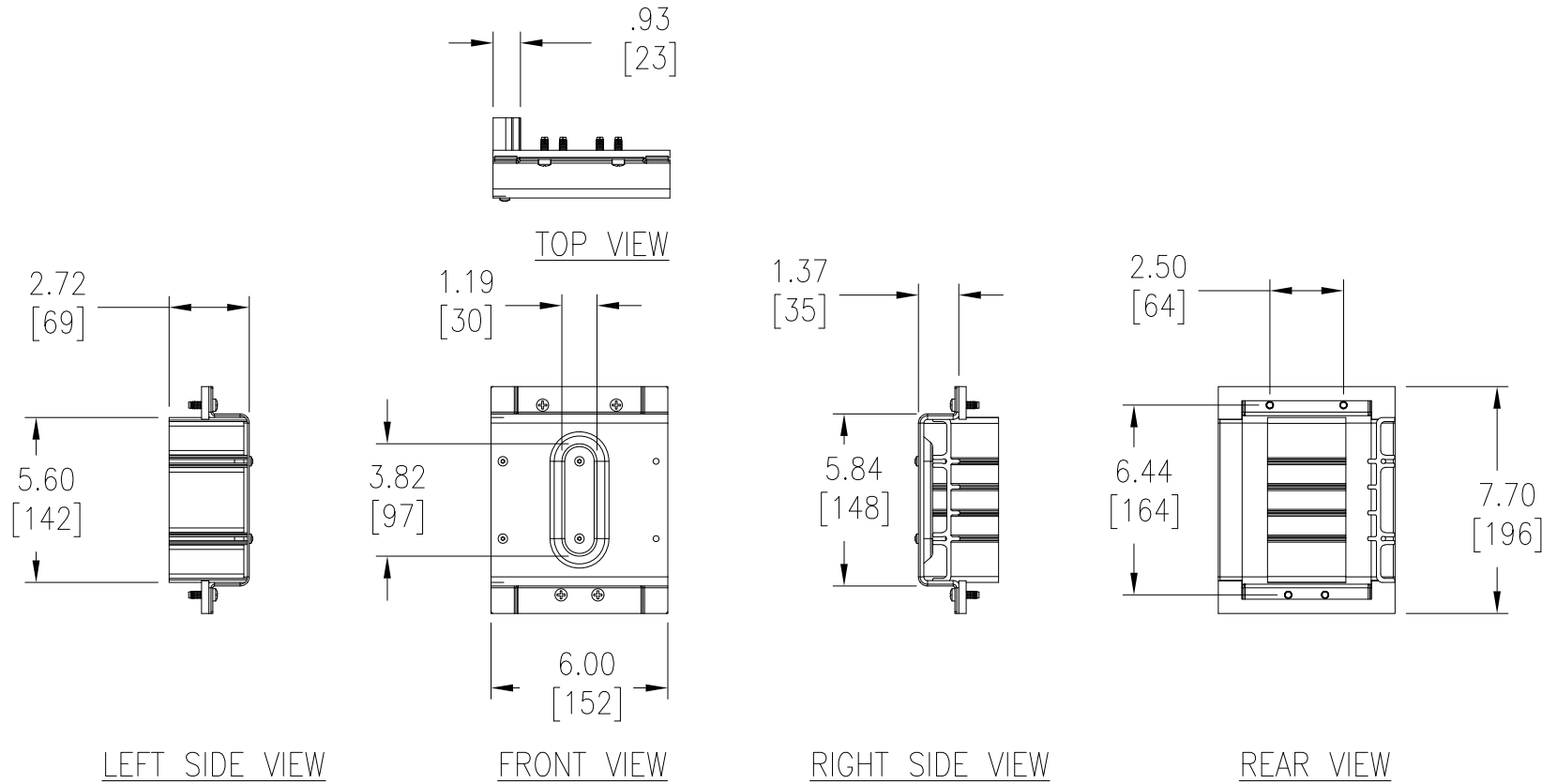
1. COMPLY WITH ALL APPLICABLE NATIONAL, STATE AND LOCAL CODES.
2. REFER TO PRODUCT MANUALS PRIOR TO INSTALLATION AND SITE PREPARATION WORK FOR FURTHER DETAILS.
3. ALL DIMENSIONS ARE IN INCHES [MILLIMETERS].
4. SOME STRUCTURAL DETAILS HAVE BEEN OMITTED FOR THE PURPOSE OF CLARITY.
5. WEIGHT OF THE UNIT IS 17.0lbs [7.73kg]

THIS DRAWING AND SPECIFICATIONS HEREIN ARE THE PROPERTY OF SCHNEIDER ELECTRIC AND SHALL NOT BE COPIED, REPRODUCED OR USED IN WHOLE OR IN PART, AS THE BASIS FOR THE MANUFACTURE OR SALE OF ITEMS WITHOUT WRITTEN PERMISSION FROM SCHNEIDER ELECTRIC. THIS DRAWING IS BASED UPON LATEST AVAILABLE INFORMATION AND IS SUBJECT TO CHANGE WITHOUT NOTICE.



TITLE: Busway for Data Center System
 Straight Length & Accessories
 3PHASE, 100A, 600V
 LENGTH-4/10ft
 CEILING MOUNTING KIT(HANGER)
 PROJECT: DRAWINGS SHEET 8 OF 10

DWG NO:	PB4A100	REV:	0
DRAWN BY:	K.NAGENDRA	10-DEC-12	THIRD ANGLE PROJECTION
ENGINEER:	SUNDAR KANNAN	10-DEC-12	
APPROVED BY:	A.WARNER	25-JAN-13	



ISOMETRIC VIEW

PB100EC

NOTES:

1. COMPLY WITH ALL APPLICABLE NATIONAL, STATE AND LOCAL CODES.
2. REFER TO PRODUCT MANUALS PRIOR TO INSTALLATION AND SITE PREPARATION WORK FOR FURTHER DETAILS.
3. ALL DIMENSIONS ARE IN INCHES [MILLIMETERS].
4. SOME STRUCTURAL DETAILS HAVE BEEN OMITTED FOR THE PURPOSE OF CLARITY.
5. WEIGHT OF THE UNIT IS 2.5lbs [1.14kg]

THIS DRAWING AND SPECIFICATIONS HEREIN ARE THE PROPERTY OF SCHNEIDER ELECTRIC AND SHALL NOT BE COPIED, REPRODUCED OR USED IN WHOLE OR IN PART, AS THE BASIS FOR THE MANUFACTURE OR SALE OF ITEMS WITHOUT WRITTEN PERMISSION FROM SCHNEIDER ELECTRIC. THIS DRAWING IS BASED UPON LATEST AVAILABLE INFORMATION AND IS SUBJECT TO CHANGE WITHOUT NOTICE.



TITLE: Busway for Data Center System
Straight Length & Accessories
3PHASE, 100A, 600V
LENGTH-4/10ft
END CLOSURE

DWG NO:	PB4A100		REV:	0
DRAWN BY:	K.NAGENDRA	10-DEC-12	THIRD ANGLE PROJECTION	
ENGINEER:	SUNDAR KANNAN	10-DEC-12		
APPROVED BY:	A.WARNER	25-JAN-13		

Electrical Data
Short Circuit Rating

Product	Short Circuit Current Rating KA, RMS Symmetrical		Impedence ¹ Line-to-Neutral (milliohms/100ft)			DC Resistance of Aluminium Housing Ground
	UL 3-Cycle Test	Series-Connected with Fuse ²	R	X60 Hz	X50 Hz	
100A	14kA	200kA	15.34	7.59	6.32	1.25

1. Busway impedance and housing ground resistance are at 176° F (80° C) operating temperature.
2. Busway connected in series with a Class J or Class T fuse.

Voltage Drop

Product	Voltage Drop (60Hz @ Rated Load)					
	(Average phase Line-to-Line Voltage Drop in Volts/100ft for Varying Power Factors)					
	100%	90%	80%	70%	60%	50%
100A	2.657	2.964	2.914	2.799	2.646	2.467

Notes

1. Values shown are based on single concentrated load at the end of Busway run. For distributed loading, divide the values shown by two(2)
2. For Balanced 3-phase line-to-line voltage drop of 4-wire busway, use values from the above table.
3. For Balanced 3-phase line-to-line neutral voltage drop, multiply values by 0.577.
4. For single-phase voltage drop, multiply values by 1.15
5. For other than rated current, multiply values by the ratio of: Actual Current ÷ Rated Current
6. For total voltage drop, multiply values by the ratio of: Actual Length ÷ 100ft
7. Voltage drop calculations for 50Hz can be made by substituting the appropriate value from Table-1. For other frequency values, contact Schneider Electric.

THIS DRAWING AND SPECIFICATIONS HEREIN ARE THE PROPERTY OF SCHNEIDER ELECTRIC AND SHALL NOT BE COPIED, REPRODUCED OR USED IN WHOLE OR IN PART, AS THE BASIS FOR THE MANUFACTURE OR SALE OF ITEMS WITHOUT WRITTEN PERMISSION FROM SCHNEIDER ELECTRIC. THIS DRAWING IS BASED UPON LATEST AVAILABLE INFORMATION AND IS SUBJECT TO CHANGE WITHOUT NOTICE.



TITLE: Busway for Data Center System
Straight Length & Accessories
3PHASE, 100A, 600V
LENGTH-4ft
TECHNICAL DATA

PROJECT: DRAWINGS SHEET 10 OF 10

DWG NO:	PB4A100	REV:	0
DRAWN BY:	K.NAGENDRA	10-DEC-12	THIRD ANGLE PROJECTION
ENGINEER:	SUNDAR KANNAN	10-DEC-12	
APPROVED BY:	A.WARNER	25-JAN-13	