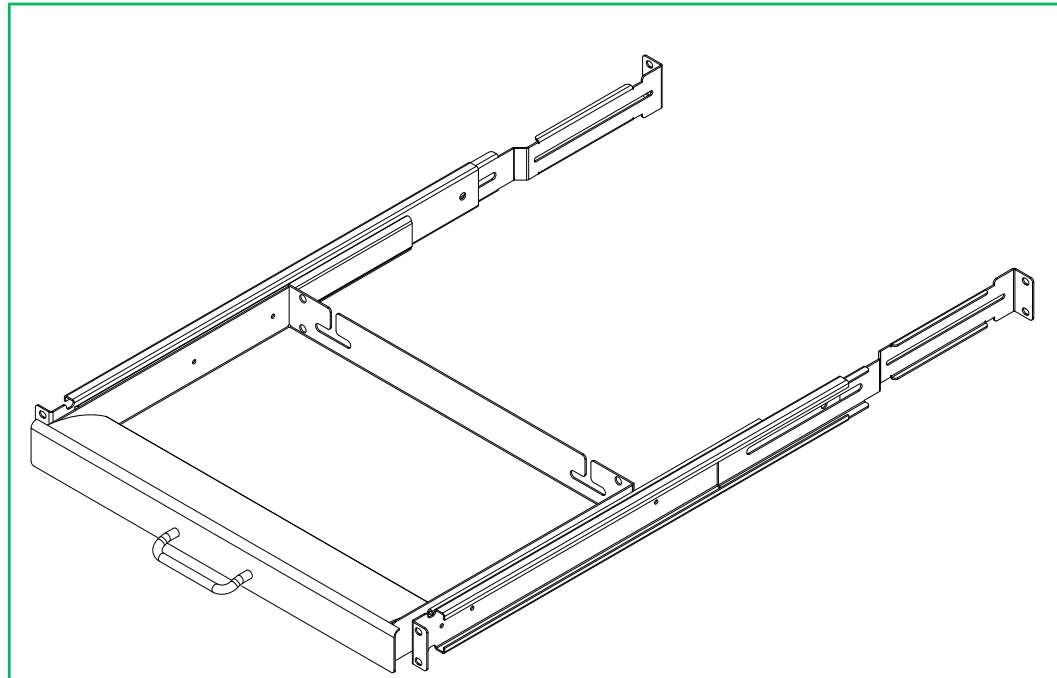
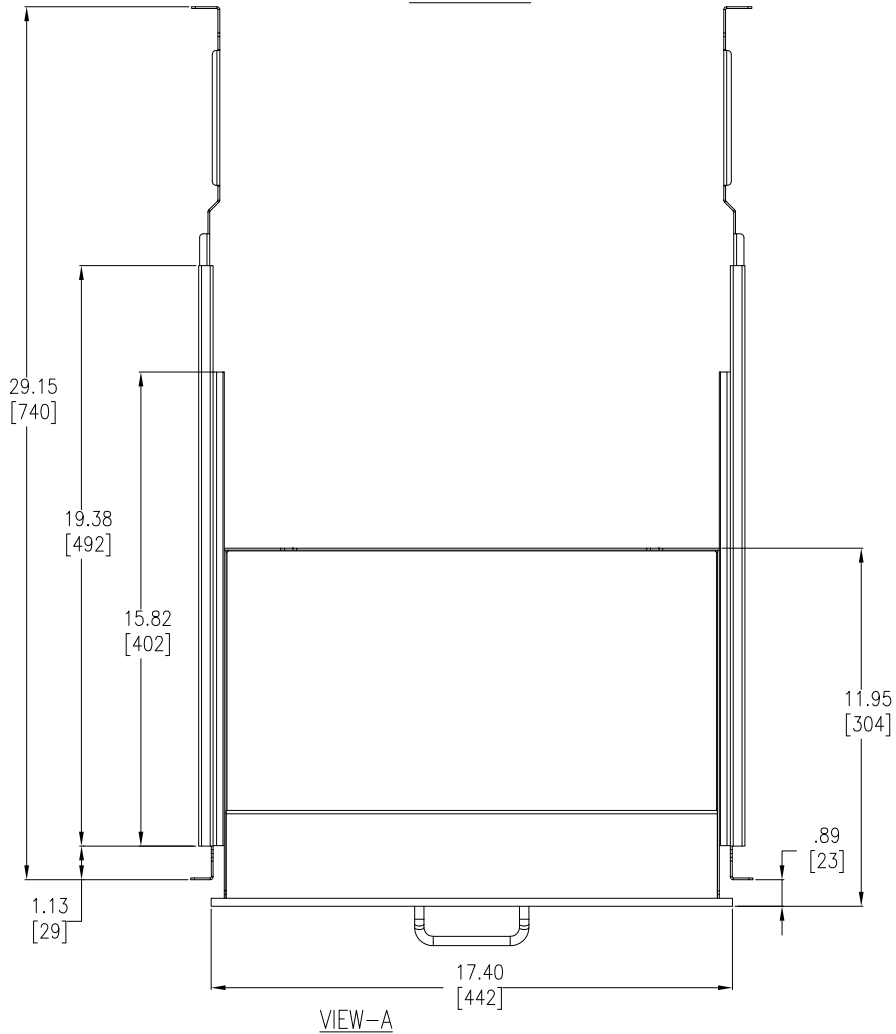
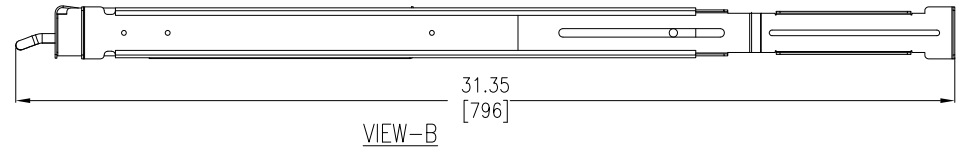
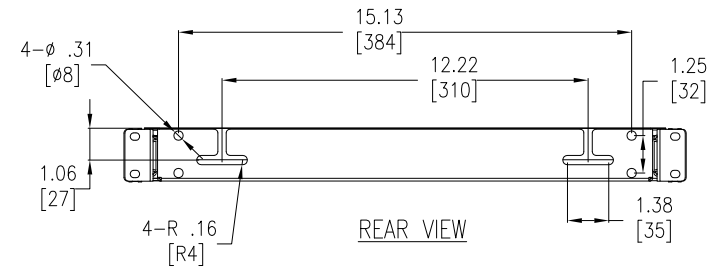
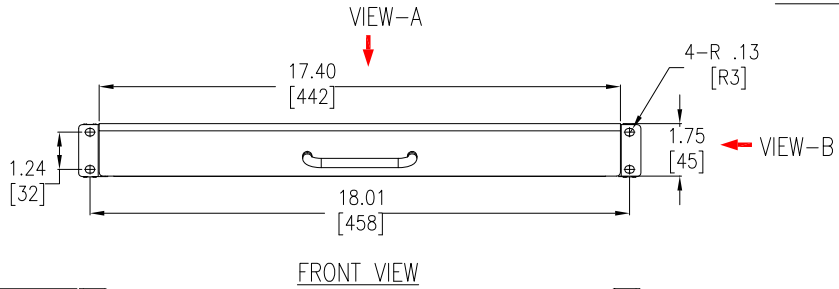


# SKU DETAILS



**NOTES:**

1. INSTALLATION SHALL COMPLY WITH ALL APPLICABLE NATIONAL AND LOCAL CODES.
2. SEE PRODUCT DOCUMENTATION FOR FURTHER INFORMATION.
3. UNLESS OTHERWISE SPECIFIED, ALL DIMENSIONS ARE IN INCHES [MILLIMETERS].
4. WEIGHT OF UNIT IS 10.00 LBS [4.55 kg].

THIS DRAWING AND SPECIFICATIONS HEREIN ARE THE PROPERTY OF SCHNEIDER ELECTRIC AND SHALL NOT BE COPIED, REPRODUCED OR USED IN WHOLE OR IN PART, AS THE BASIS FOR THE MANUFACTURE OR SALE OF ITEMS WITHOUT WRITTEN PERMISSION FROM SCHNEIDER ELECTRIC. THIS DRAWING IS BASED UPON LATEST AVAILABLE INFORMATION AND IS SUBJECT TO CHANGE WITHOUT NOTICE.

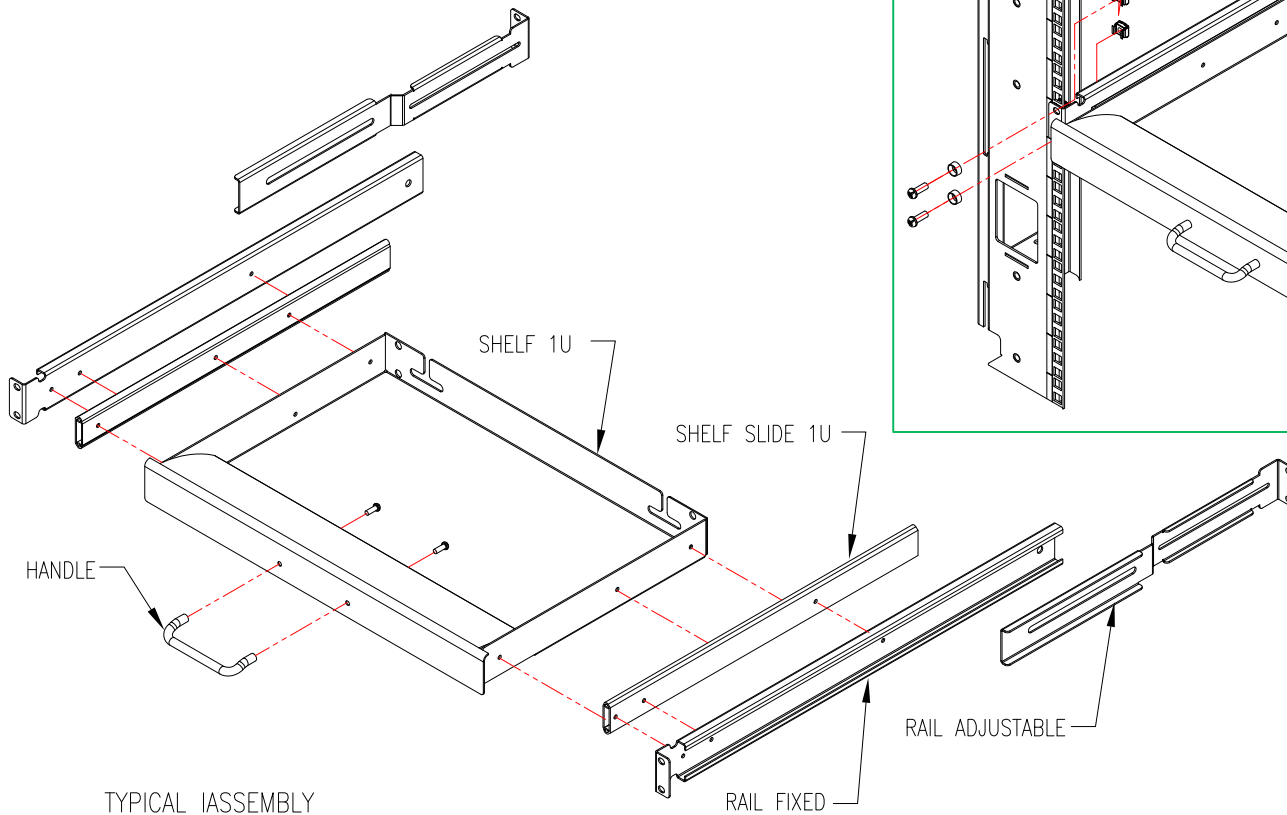


TITLE:  
17-INCH KEYBOARD DRAWER  
MAIN MECHANICAL

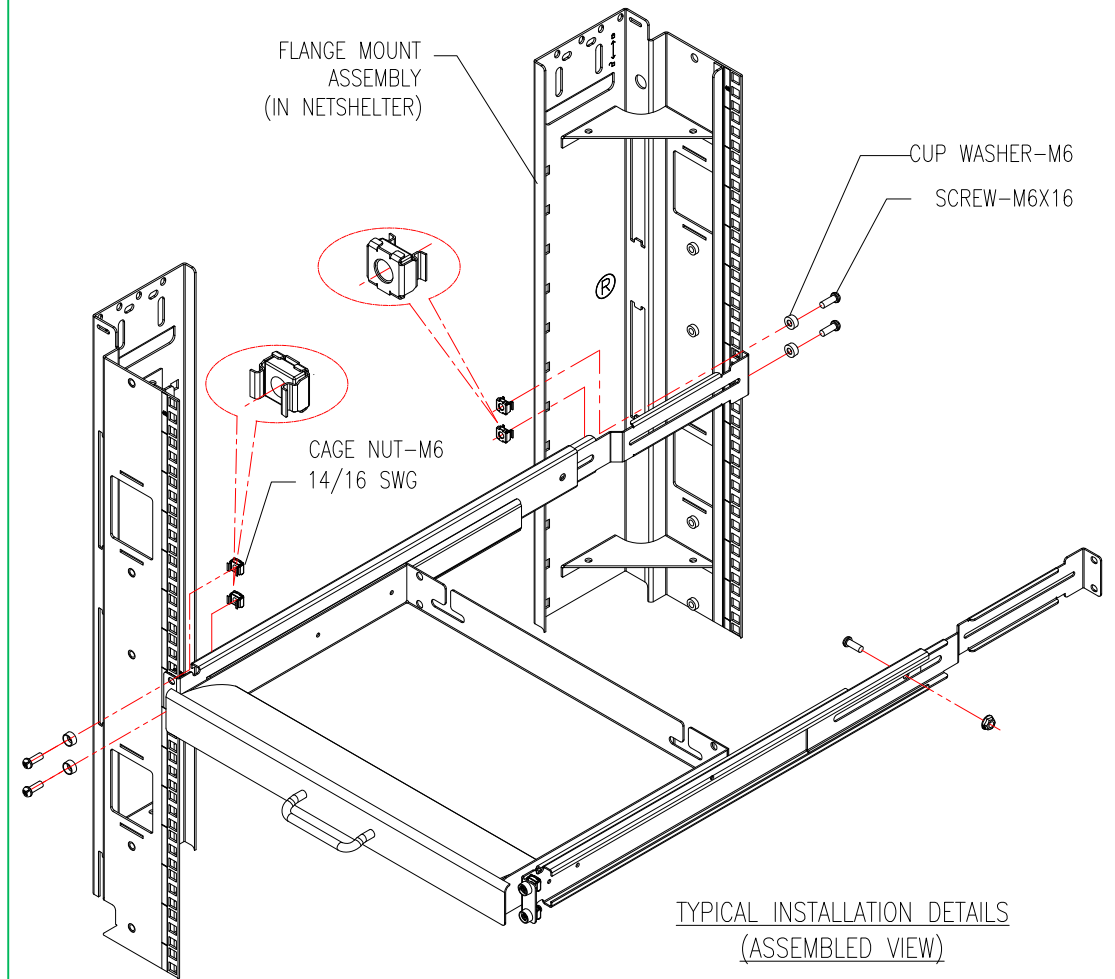
PROJECT: STD SUBMITTAL DRAWINGS SHEET 1 OF 2

DWG NO:	AR8126ABLK		REV	0
DRAWN BY:	K NAGENDRA	07-DEC-07	PROJ	ANGLE
ENGINEER:	M UHRHAN/B OLIVER	18-JAN-08		N/A
APPROVED BY:	SHERIDANE SQUAW LARSONS WASH			
		18-JAN-08		

APPLICATION DETAILS  
(ONE UNIT PER SKU)



TYPICAL ASSEMBLY  
(EXPLODED VIEW)



TYPICAL INSTALLATION DETAILS  
(ASSEMBLED VIEW)

NOTES:

1. INSTALLATION SHALL COMPLY WITH ALL APPLICABLE NATIONAL AND LOCAL CODES.
2. SEE PRODUCT DOCUMENTATION FOR FURTHER INFORMATION.

THIS DRAWING AND SPECIFICATIONS HEREIN ARE THE PROPERTY OF SCHNEIDER ELECTRIC AND SHALL NOT BE COPIED, REPRODUCED OR USED IN WHOLE OR IN PART, AS THE BASIS FOR THE MANUFACTURE OR SALE OF ITEMS WITHOUT WRITTEN PERMISSION FROM SCHNEIDER ELECTRIC. THIS DRAWING IS BASED UPON LATEST AVAILABLE INFORMATION AND IS SUBJECT TO CHANGE WITHOUT NOTICE.



TITLE:  
17-INCH KEYBOARD DRAWER ASSEMBLY

PROJECT: STD SUBMITTAL DRAWINGS SHEET 2 OF 2

DWG NO: AR8126ABLK

DRAWN BY: K NAGENDRA 07-DEC-07

ENGINEER: M UHRHAN/B OLIVER 18-JAN-08

APPROVED BY: SHERIDAN/SILVIA/CARLOS/NASH 18-JAN-08

REV 0

PROJ ANGLE N/A