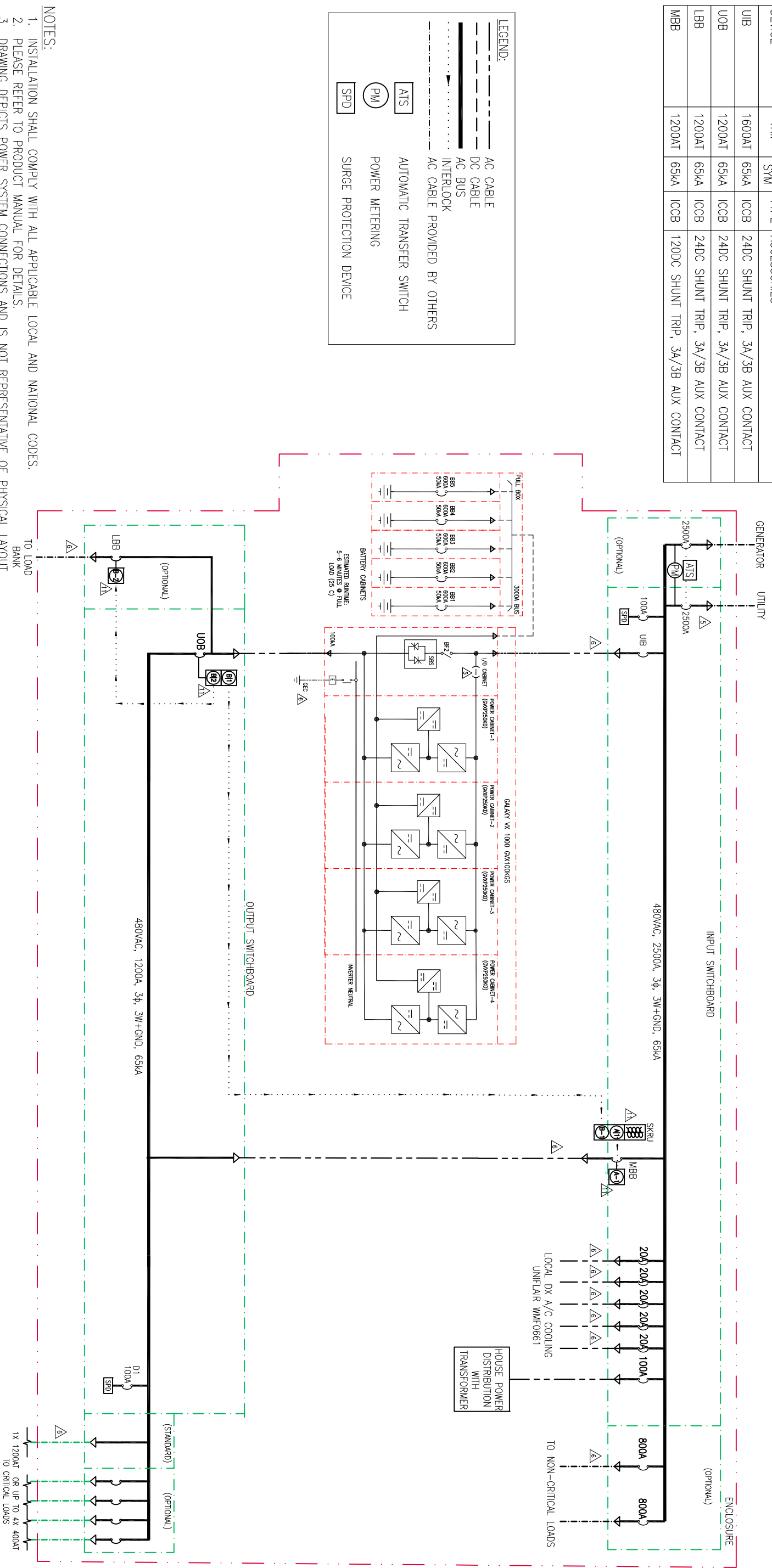
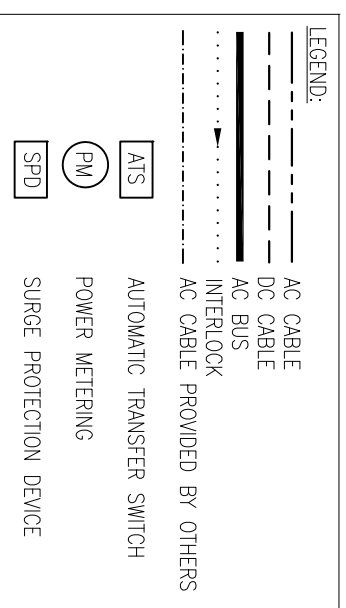


DEVICE	TRIP	RMS S/M	TYPE	ACCESSORIES
UIB	1600AT	65kA	ICCB	24DC SHUNT TRIP, 3A/3B AUX CONTACT
UOB	1200AT	65kA	ICCB	24DC SHUNT TRIP, 3A/3B AUX CONTACT
LBB	1200AT	65kA	ICCB	24DC SHUNT TRIP, 3A/3B AUX CONTACT
MBB	1200AT	65kA	ICCB	1200DC SHUNT TRIP, 3A/3B AUX CONTACT



- NOTES:**
1. INSTALLATION SHALL COMPLY WITH ALL APPLICABLE LOCAL AND NATIONAL CODES.
 2. PLEASE REFER TO PRODUCT MANUAL FOR DETAILS.
 3. DRAWING DEPICTS POWER SYSTEM CONNECTIONS AND IS NOT REPRESENTATIVE OF PHYSICAL LAYOUT, PLEASE REFER TO MECHANICAL DRAWINGS FOR PHYSICAL LAYOUT.
 4. ALL BREAKERS SHALL BE 100% CONTINUOUS DUTY RATED AND COORDINATED WITH REQUIRED SYSTEM SETTINGS AS DETAILED IN GALAXY VX INSTALLATION MANUAL. BREAKER SIZING IS BASED ON NOMINAL MAINS VOLTAGE.

- Δ5. AC SOURCE SHALL BE 480VAC, 3-WIRE, WYE CONNECTED, 3Ø (CONTACT APC IF OTHER).
- Δ6. AC CABLING SHALL BE 600V RATED, 3-WIRE + GROUND.
- Δ7. DC SOURCE SHALL BE NOMINAL 480 VDC, 2-WIRE + GROUND.
- Δ8. DC CABLING SHALL BE 600V RATED, 2-WIRE + GROUND, EACH CIRCUIT TO BE RUN IN SEPARATE CONDUITS, POSITIVE, NEGATIVE + GROUND. SEE 5-LINE DIAGRAM FOR DETAILS.
9. BATTERY SIZING IS BASED ON A MAXIMUM 1 VOLT DROP PER HALF-STRING AT NOMINAL RATED DC CURRENT. CE SHALL ADJUST CABLE SIZE BASED ON INSTALLATION PARAMETERS.
- Δ10. THIS SYSTEM SHALL BE INSTALLED AS A SEPARATELY DERIVED SYSTEM IN ACCORDANCE WITH LOCAL AND NATIONAL CODES. N.E.C. 250.30(6)(3). THE GROUNDING ELECTRODE CONDUCTOR (GEC) IS PROVIDED BY OTHERS.
- Δ11. KEY INTERLOCKS WITH SKRU, SCHEME 39, BETWEEN MBB & UOB, ARE INCLUDED AS STANDARD WITH THE SYSTEM. KEY INTERLOCKS WITH SKRU, SCHEME 29, BETWEEN UOB & LBB, ARE OPTIONAL AND ARE NOT INCLUDED AS STANDARD WITH THE SYSTEM. LBB IS OPTIONAL AND NOT INCLUDED AS STANDARD WITH THE SYSTEM.
12. CABLE LUGS ARE PROVIDED BY OTHERS.
13. OPTIONAL: LITHIUM ION BATTERY SOLUTION AT 14 MINUTES.

FILENAME/PATH:

REV	DESCRIPTION	DRWN	DATE	ENGR	DATE	APPR	DATE
01	ADD BATTERY CABINETS, FIX NOTE 11, NAME BREAKER D1, CHANGE COOLING UNIT, RELEASE	M. UHRHAN	26 SEP 17	M. TAWARES	26 SEP 17		
E4	RM QTY 1 COOLING UNIT	M. UHRHAN	09 AUG 17	M. TAWARES	09 AUG 17		
E3	CHANGE BREAKER LABELS, RM Q4, REROUTE LBB	M. UHRHAN	08 AUG 17	M. TAWARES	08 AUG 17		

REVISIONS

THIS DRAWING AND SPECIFICATIONS HEREIN ARE THE PROPERTY OF SCHNEIDER ELECTRIC AND SHALL NOT BE COPIED, REPRODUCED OR USED IN WHOLE OR IN PART, AS THE BASIS FOR THE MANUFACTURE OR SALE OF ITEMS WITHOUT WRITTEN PERMISSION FROM SCHNEIDER ELECTRIC. THIS DRAWING IS BASED UPON LATEST AVAILABLE INFORMATION AND IS SUBJECT TO CHANGE WITHOUT NOTICE.				1000KW VX POWER MODULE		REV 01	
TITLE:	1000 kW GALAXY VX ENCLOSURE	DRWN:	M. UHRHAN	DATE:	26 SEP 17	PROJ ANGLE:	N/A
TITLE:	INPUT: 480VAC, 3Ø, DUAL MAIN	ENGR:	M. TAWARES	DATE:	26 SEP 17	PROJ ANGLE:	N/A
TITLE:	OUTPUT: 480VAC, 3Ø, 1000KW	APPROVED:	M. TAWARES	DATE:	26 SEP 17	PROJ ANGLE:	N/A
TITLE:	SINGLE-LINE DIAGRAM	PROJECT:	1000KW GYX PM	SHEET:	1 OF 1	PROJ ANGLE:	N/A