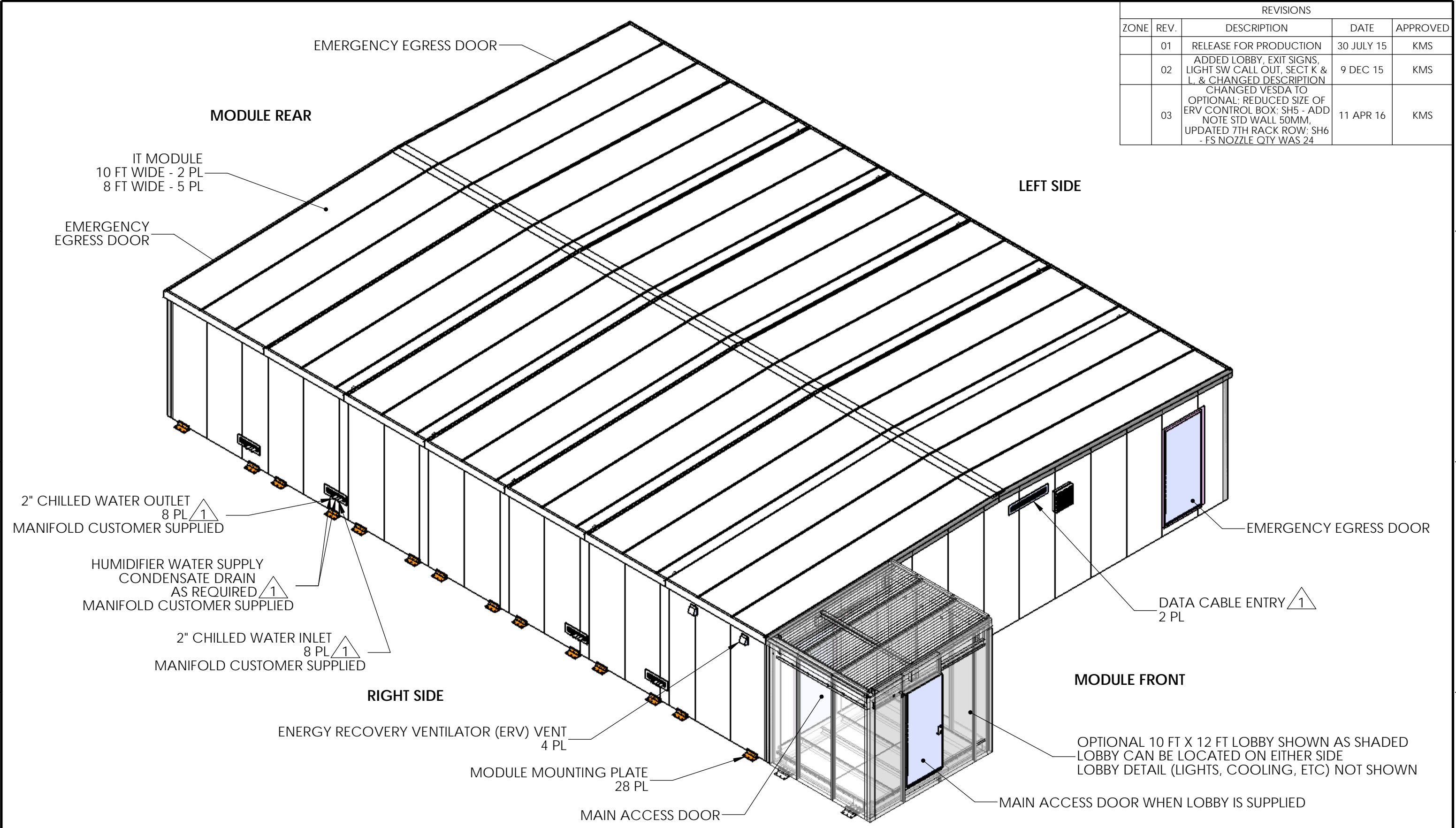


REVISIONS				
ZONE	REV.	DESCRIPTION	DATE	APPROVED
	01	RELEASE FOR PRODUCTION	30 JULY 15	KMS
	02	ADDED LOBBY, EXIT SIGNS, LIGHT SW CALL OUT, SECT K & L, & CHANGED DESCRIPTION	9 DEC 15	KMS
	03	CHANGED VESDA TO OPTIONAL; REDUCED SIZE OF ERV CONTROL BOX; SH5 - ADD NOTE STD WALL 50MM, UPDATED 7TH RACK ROW; SH6 - FS NOZZLE QTY WAS 24	11 APR 16	KMS



NOTES, UNLESS OTHERWISE SPECIFIED:

- ALL DATA CABLE, POWER CABLE, AND COOLING PIPING INTERFACES ARE THROUGH ROXTEC CABLE ENTRY SEALS (OR SCHNEIDER ELECTRIC ENGINEERING APPROVED IP54, IP 66/67 EQUIVALENT).
- MATERIAL: SEE INDIVIDUAL COMPONENTS LISTED IN BOM.

THIS DRAWING AND SPECIFICATIONS HEREIN ARE THE PROPERTY OF SCHNEIDER ELECTRIC AND SHALL NOT BE COPIED, REPRODUCED OR USED IN WHOLE OR IN PART, AS THE BASIS FOR THE MANUFACTURE OR SALE OF ITEMS WITHOUT WRITTEN PERMISSION FROM SCHNEIDER ELECTRIC. THIS DRAWING IS BASED UPON LATEST AVAILABLE INFORMATION AND IS SUBJECT TO CHANGE WITHOUT NOTICE.

UNLESS NOTED, DIMENSIONS IN MILLIMETERS & TOLERANCES ARE:
 XXXX ± 25 mm
 XXX ± 10 mm
 XX ± 5 mm
 X ± 1 mm
 X.X ± 0.5 mm
 X.XX ± 0.30 mm
 X° + 1°
 X.X° + 0.5°

SHEET DESCRIPTION
 ISOMETRIC VIEW
 SCALE: FS NOT SCALE DRW 1:75
 THIRD ANGLE PROJECTION



DESCRIPTION
 SMARTSHELTER DATA HALL WITH PERIMETER COOLING & PDU; 480V/60HZ
 FILE ID PFMIEA500C2N097A Multi Bay IT NAM Perimeter PDU

DRAWING		PFMIEA500C2N097A	
DRAWN:	K SCHALLER	17 JUN 2015	REV 03
APPROVED:	B STEWART	30 JUL 2015	SIZE B
ENGINEER:	K SCHALLER	SHEET 1 OF 9	

CONSULT USER MANUAL FOR COMPLETE INSTALLATION AND OPERATING INSTRUCTIONS

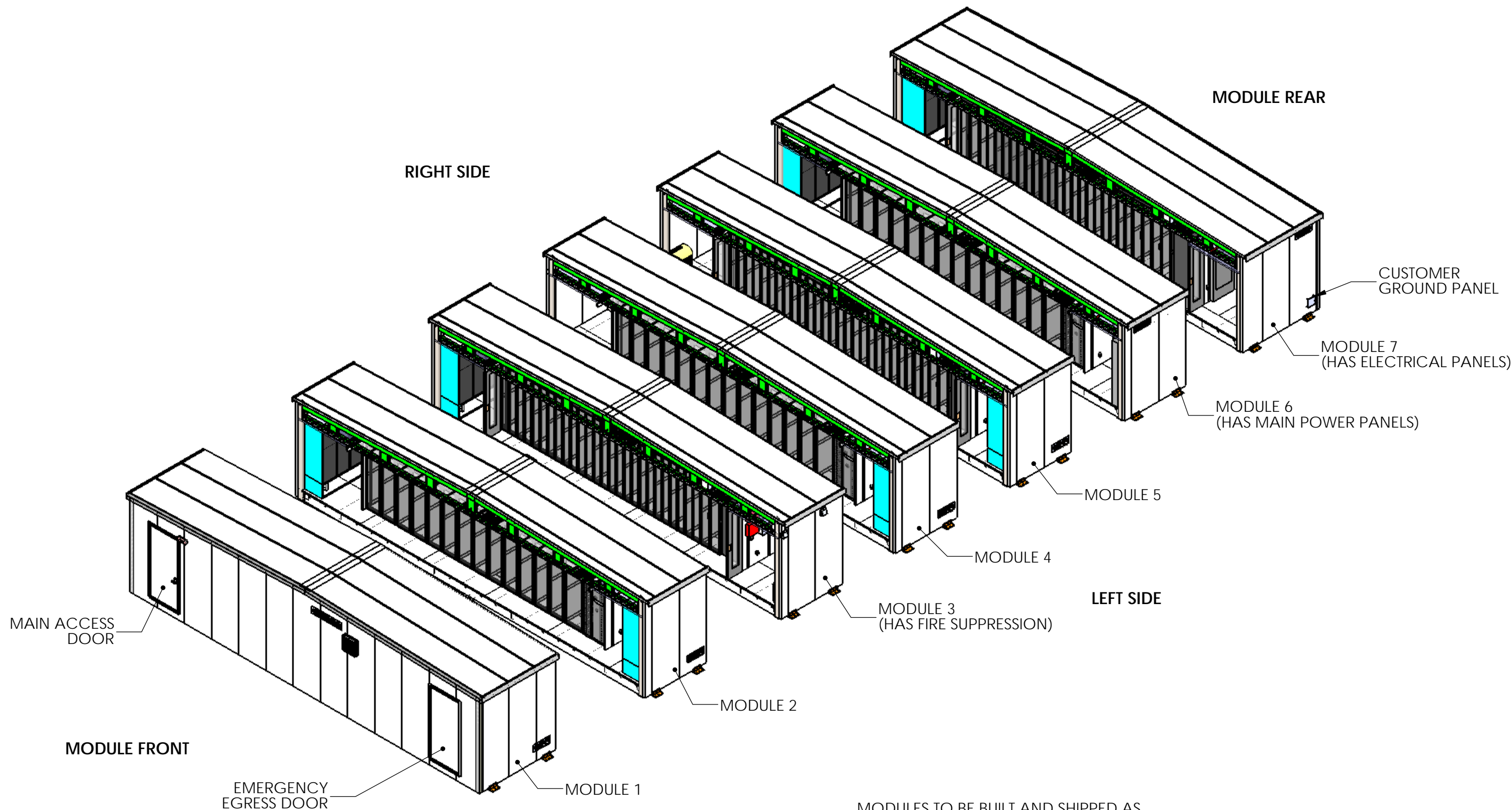
BRACKETED DIMENSIONS ARE IN INCHES & ARE FOR REFERENCE ONLY

PRODUCT: PREFAB SOLUTIONS

A B C D E F G H

1
2
3
4

1
2
3
4



MODULES TO BE BUILT AND SHIPPED AS DISCRETE MODULES AND JOINED ON SITE. SEE INSTALLATION MANUAL FOR ADDITIONAL DETAIL

THIS DRAWING AND SPECIFICATIONS HEREIN ARE THE PROPERTY OF SCHNEIDER ELECTRIC AND SHALL NOT BE COPIED, REPRODUCED OR USED IN WHOLE OR IN PART, AS THE BASIS FOR THE MANUFACTURE OR SALE OF ITEMS WITHOUT WRITTEN PERMISSION FROM SCHNEIDER ELECTRIC. THIS DRAWING IS BASED UPON LATEST AVAILABLE INFORMATION AND IS SUBJECT TO CHANGE WITHOUT NOTICE.
CONSULT USER MANUAL FOR COMPLETE INSTALLATION AND OPERATING INSTRUCTIONS

UNLESS NOTED, DIMENSIONS IN MILLIMETERS & TOLERANCES ARE:
 XXXX. ± 25 mm
 XXX. ± 10 mm
 XX. ± 5 mm
 X. ± 1 mm
 X.X ± 0.5 mm
 X.XX ± 0.30 mm
 X* + 1*
 X.X* + 0.5*

BRACKETED DIMENSIONS ARE IN INCHES & ARE FOR REFERENCE ONLY

SHEET DESCRIPTION
 EXPLODED VIEW
 SCALE: 1:110
 THIRD ANGLE PROJECTION

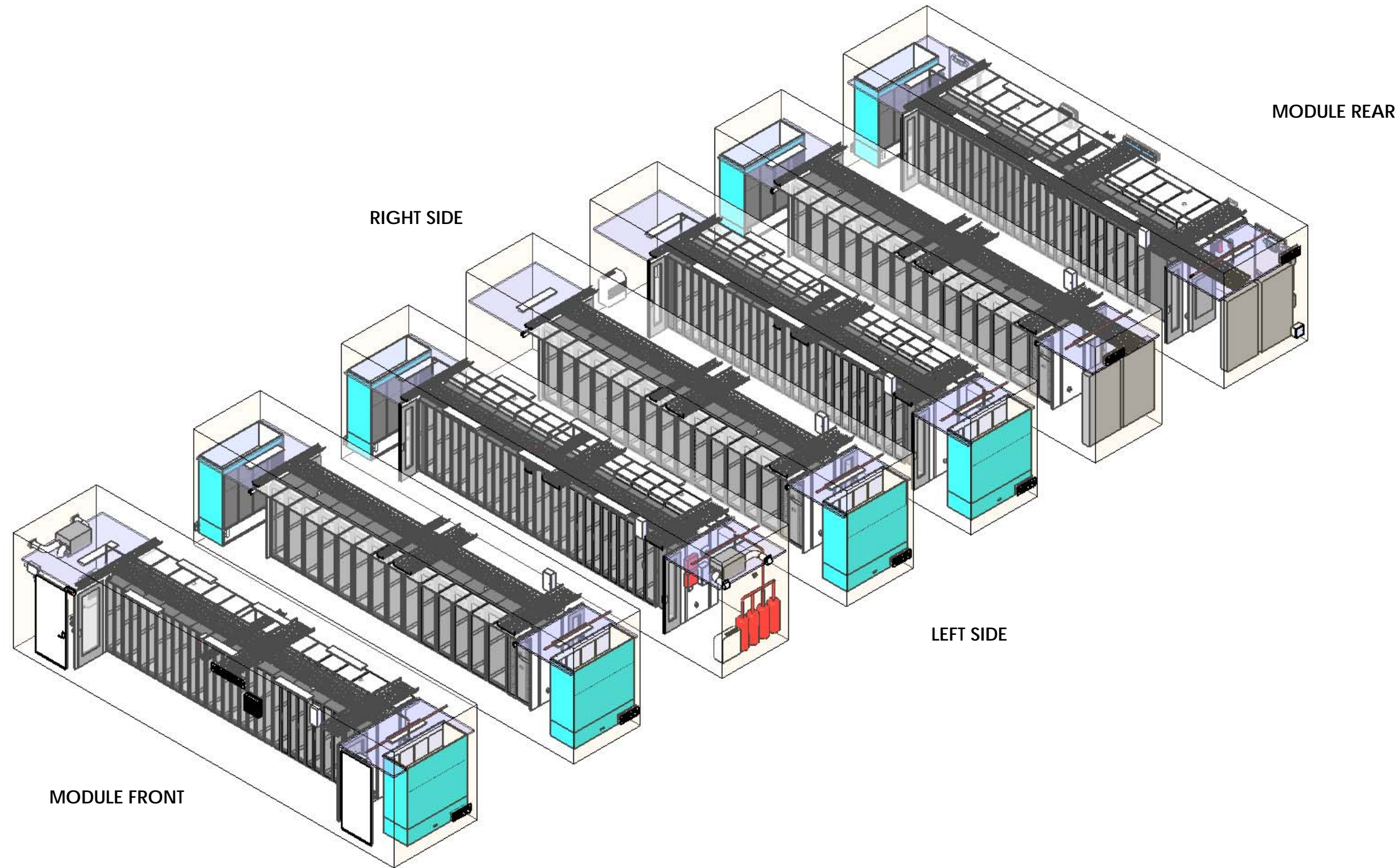


DESCRIPTION
 SMARTSHELTER DATA HALL WITH PERIMETER COOLING & PDU; 480V/60HZ
 FILE ID: PFMIEA500C2N097A Multi Bay IT NAM Perimeter PDU

DRAWING		PFMIEA500C2N097A	
DRAWN:	K SCHALLER	17 JUN 2015	REV 03
APPROVED:	B STEWART	30 JUL 2015	SIZE B
ENGINEER:	K SCHALLER	SHEET 2 OF 9	

A B C D E F G H

A B C D E F G H



EXPLODED VIEW OF INTERIOR OF MODULES
STRUCTURE REMOVED FOR CLARITY

THIS DRAWING AND SPECIFICATIONS HEREIN ARE THE PROPERTY OF SCHNEIDER ELECTRIC AND SHALL NOT BE COPIED, REPRODUCED OR USED IN WHOLE OR IN PART, AS THE BASIS FOR THE MANUFACTURE OR SALE OF ITEMS WITHOUT WRITTEN PERMISSION FROM SCHNEIDER ELECTRIC. THIS DRAWING IS BASED UPON LATEST AVAILABLE INFORMATION AND IS SUBJECT TO CHANGE WITHOUT NOTICE.

UNLESS NOTED, DIMENSIONS IN MILLIMETERS & TOLERANCES ARE:
 XXXX. ± 25 mm
 XXX. ± 10 mm
 XX. ± 5 mm
 X. ± 1 mm
 X.X ± 0.5 mm
 X.XX ± 0.30 mm
 X* + 1*
 X.X* + 0.5*

SHEET DESCRIPTION
 INTERIOR EXPLODED VIEW
 SCALE: AS NOTED OR 1:110
 THIRD ANGLE PROJECTION



DESCRIPTION
 SMARTSHELTER DATA HALL WITH PERIMETER COOLING & PDU; 480V/60HZ

DRAWING		PFMIEA500C2N097A	
DRAWN:	K SCHALLER	17 JUN 2015	REV 03
APPROVED:	B STEWART	30 JUL 2015	SIZE B
ENGINEER:	K SCHALLER	SHEET 3 OF 9	

CONSULT USER MANUAL FOR COMPLETE INSTALLATION AND OPERATING INSTRUCTIONS

BRACKETED DIMENSIONS ARE IN INCHES & ARE FOR REFERENCE ONLY

THIRD ANGLE PROJECTION

PRODUCT: PREFAB SOLUTIONS

FILE ID: PFMIEA500C2N097A Multi Bay IT NAM Perimeter PDU

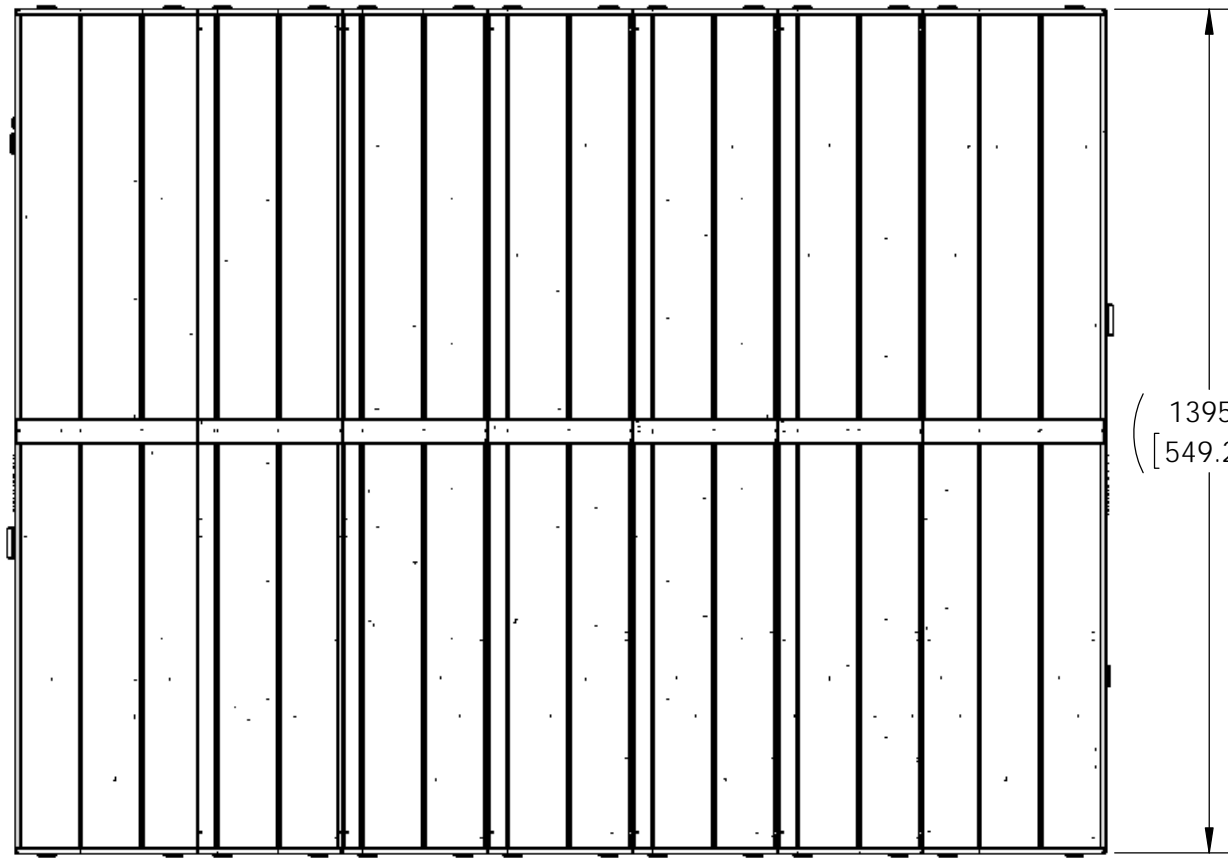
A B C D E F G H

1
2
3
4

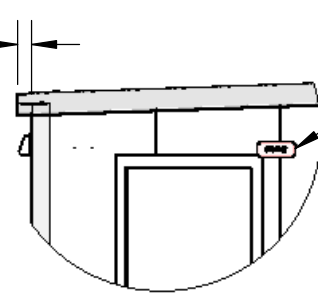
1
2
3
4

RIGHT SIDE

MODULE FRONT



(120)
[4.72]

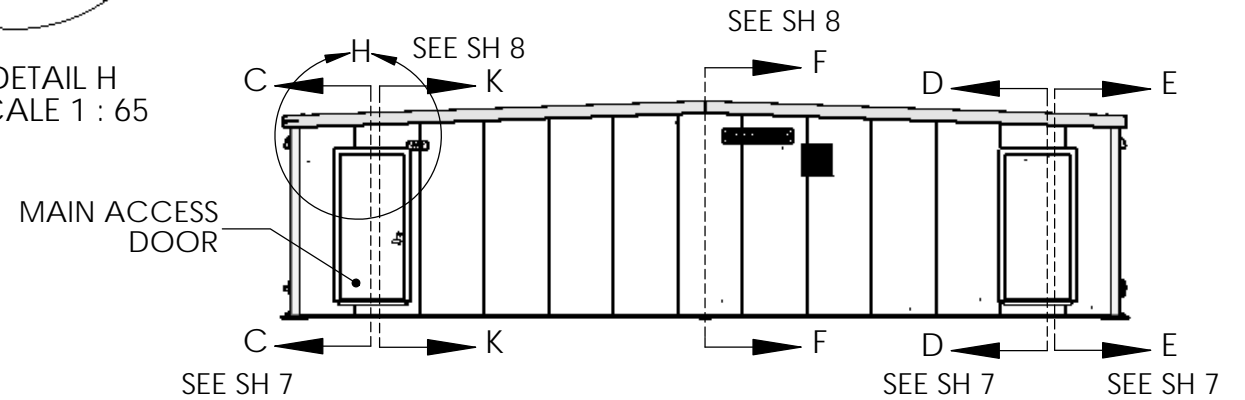


EXTERNAL FIRE LIGHT & ALARM

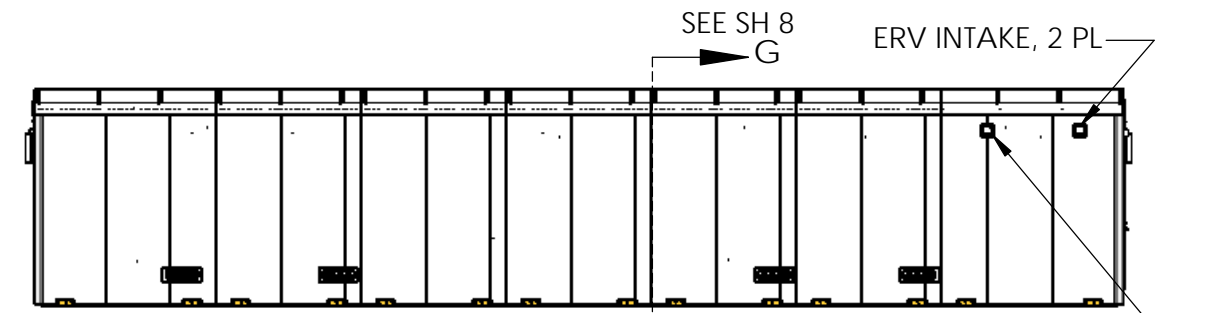
DETAIL H
SCALE 1 : 65

MODULE REAR

(13951)
[549.26]



FRONT VIEW



RIGHT SIDE VIEW

ERV INTAKE, 2 PL
ERV EXHAUST
MIN 6 FT FROM INTAKE
2 PL

ENERGY RECOVERY VENTILATOR (ERV) VENT WITH FIRE SMOKE DAMPER
4 PL

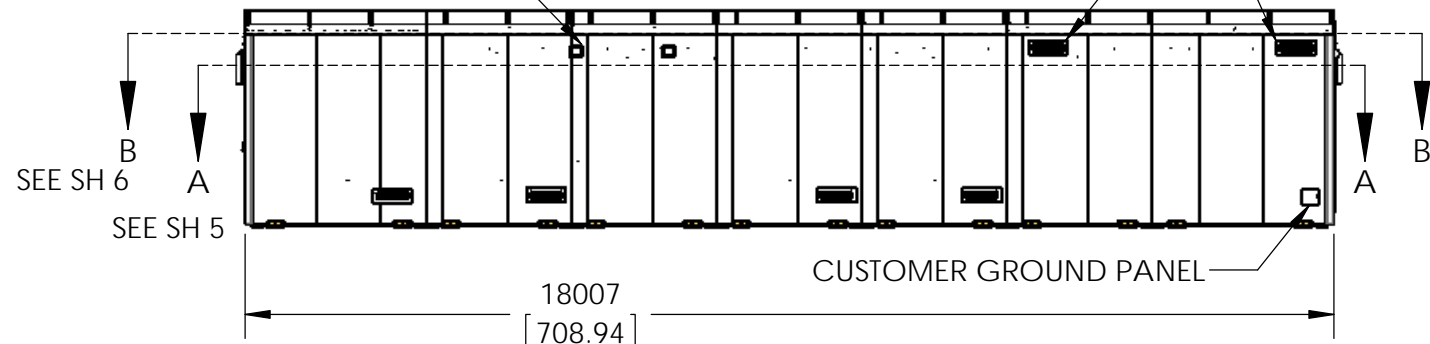
INCOMING POWER CABLES FEED A & B POWER PANELS
(CUSTOMER SUPPLIED)

INCOMING POWER CABLES FEED C & D ELECTRICAL PANELS
(CUSTOMER SUPPLIED)

EMERGENCY EGRESS DOOR
3 PL

DATA CABLE ENTRY
2 PL

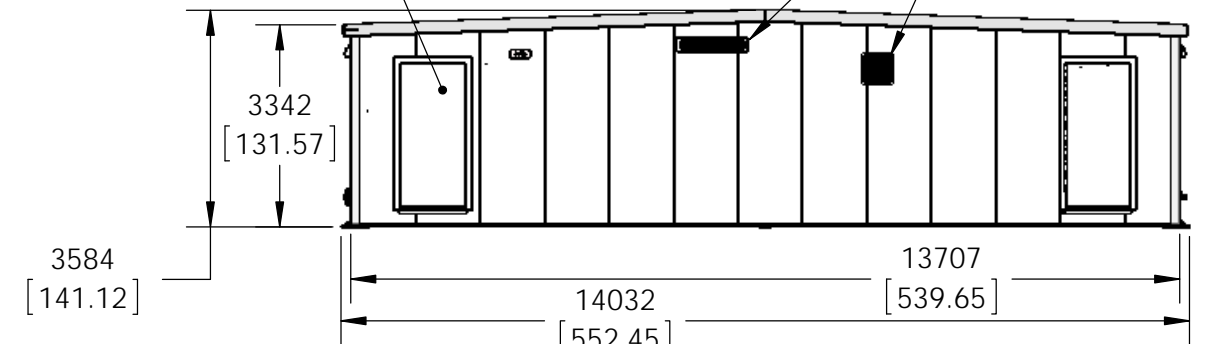
FIRE SUPPRESSION OVER PRESSURE VALVE
2 PL



LEFT SIDE VIEW

(18007)
[708.94]

CUSTOMER GROUND PANEL



REAR VIEW

(3584)
[141.12]

(3342)
[131.57]

(14032)
[552.45]

(13707)
[539.65]

THIS DRAWING AND SPECIFICATIONS HEREIN ARE THE PROPERTY OF SCHNEIDER ELECTRIC AND SHALL NOT BE COPIED, REPRODUCED OR USED IN WHOLE OR IN PART, AS THE BASIS FOR THE MANUFACTURE OR SALE OF ITEMS WITHOUT WRITTEN PERMISSION FROM SCHNEIDER ELECTRIC. THIS DRAWING IS BASED UPON LATEST AVAILABLE INFORMATION AND IS SUBJECT TO CHANGE WITHOUT NOTICE.

UNLESS NOTED, DIMENSIONS IN MILLIMETERS & TOLERANCES ARE:
XXX. ± 25 mm
XXX. ± 10 mm
XX. ± 5 mm
X. ± 1 mm
X.X ± 0.5 mm
X.XX ± 0.30 mm

SHEET DESCRIPTION
OVERALL DIM
SCALE: TO NOT SCALE DRW 1:125
THIRD ANGLE PROJECTION



DESCRIPTION
SMARTSHELTER DATA HALL WITH PERIMETER COOLING & PDU; 480V/60HZ

DRAWING		PFMIEA500C2N097A	
DRAWN:	K SCHALLER	17 JUN 2015	REV 03
APPROVED:	B STEWART	30 JUL 2015	SIZE B
ENGINEER:	K SCHALLER	SHEET 4 OF 9	

CONSULT USER MANUAL FOR COMPLETE INSTALLATION AND OPERATING INSTRUCTIONS

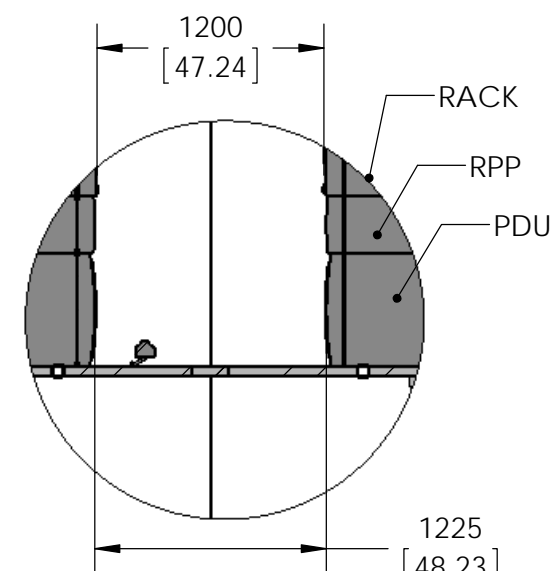
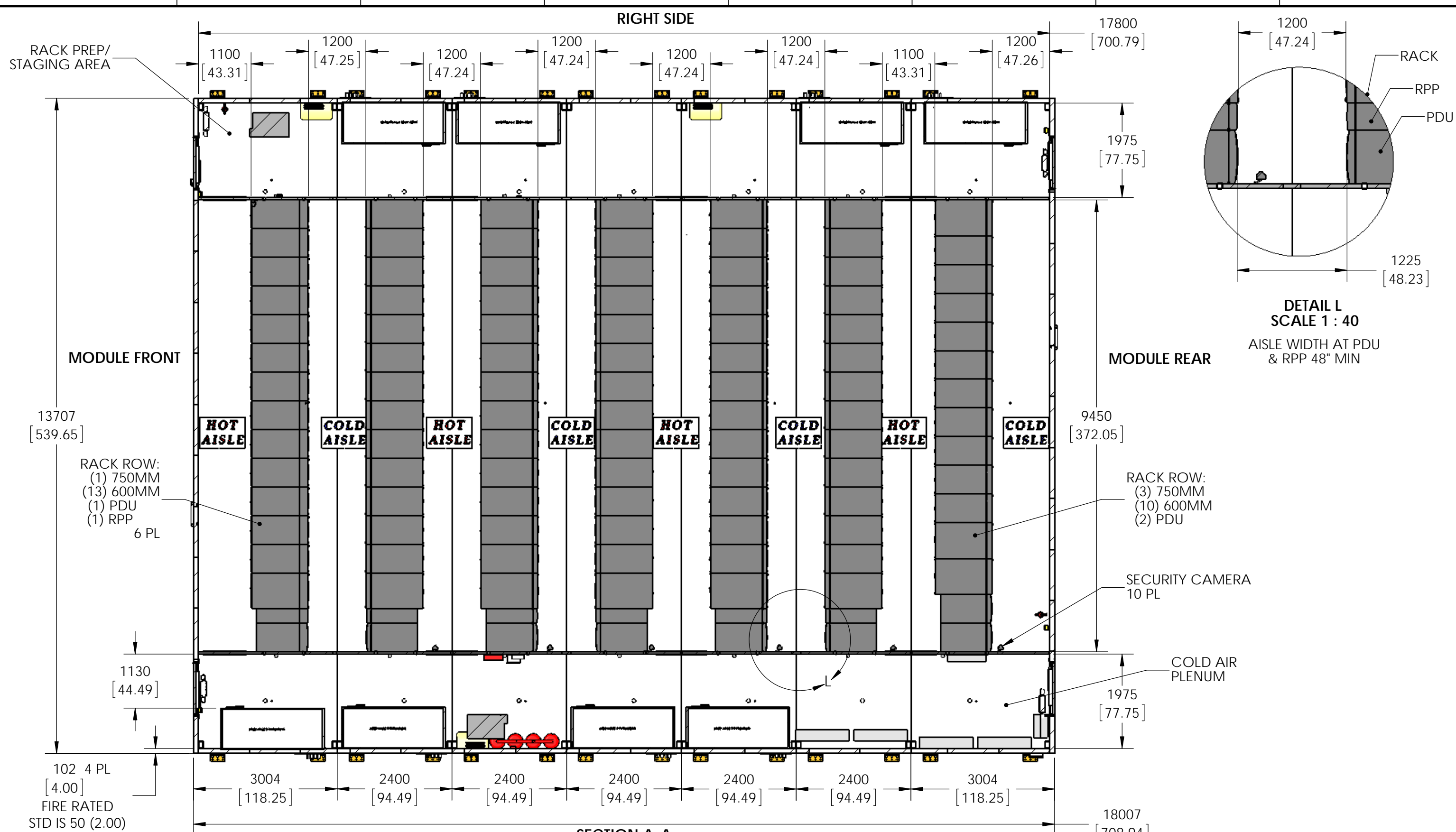
BRACKETED DIMENSIONS ARE IN INCHES & ARE FOR REFERENCE ONLY

PRODUCT: PREFAB SOLUTIONS

FILE ID: PFMIEA500C2N097A Multi Bay IT NAM Perimeter PDU

ENGINEER: K SCHALLER

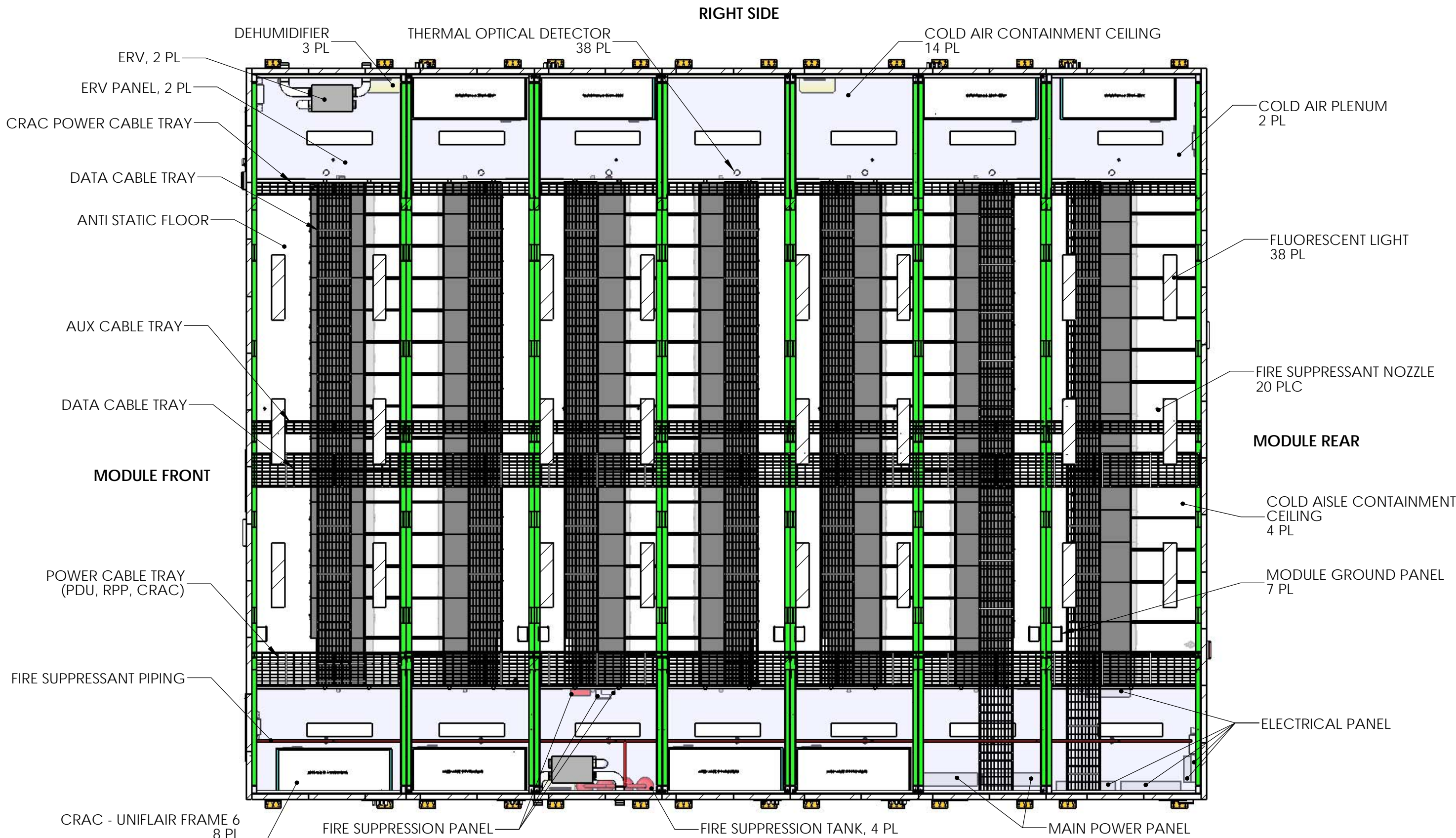
SHEET 4 OF 9



DETAIL L
SCALE 1 : 40
 AISLE WIDTH AT PDU
 & RPP 48" MIN

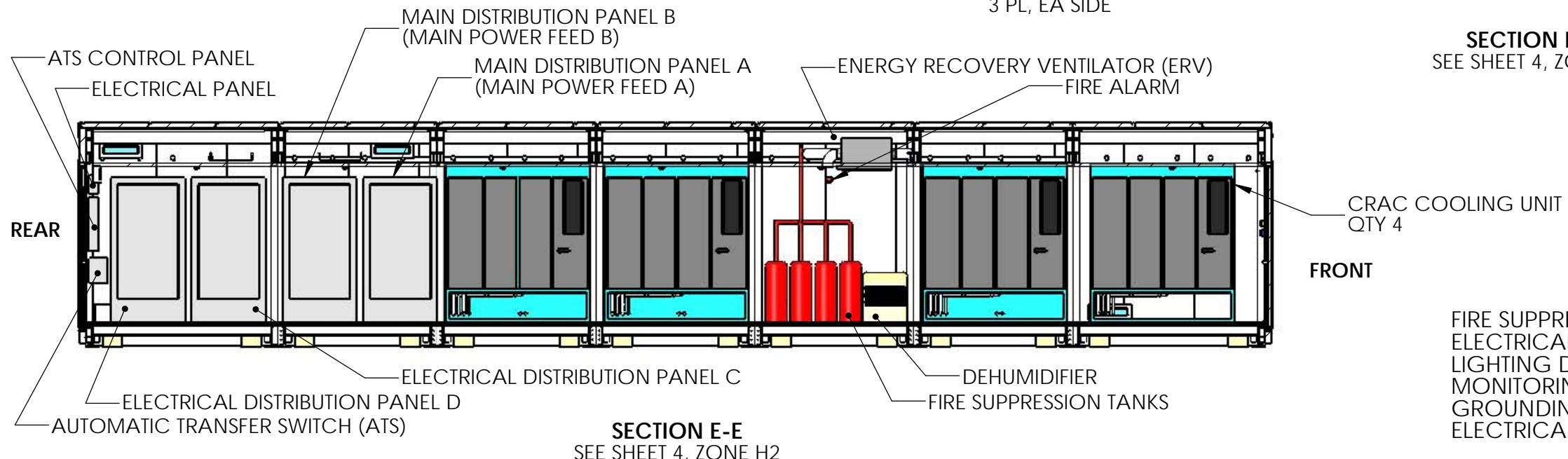
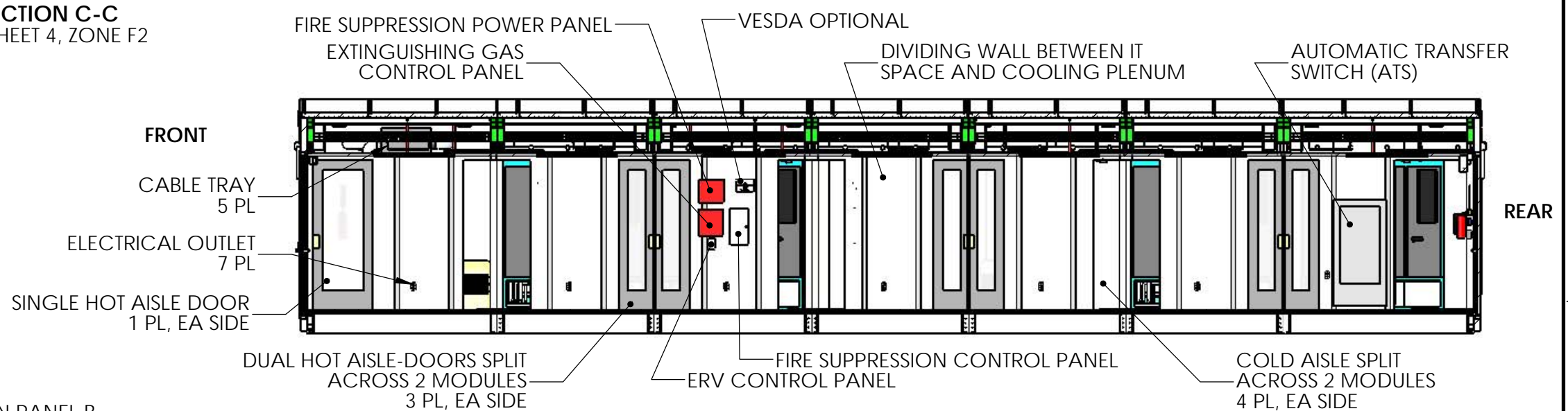
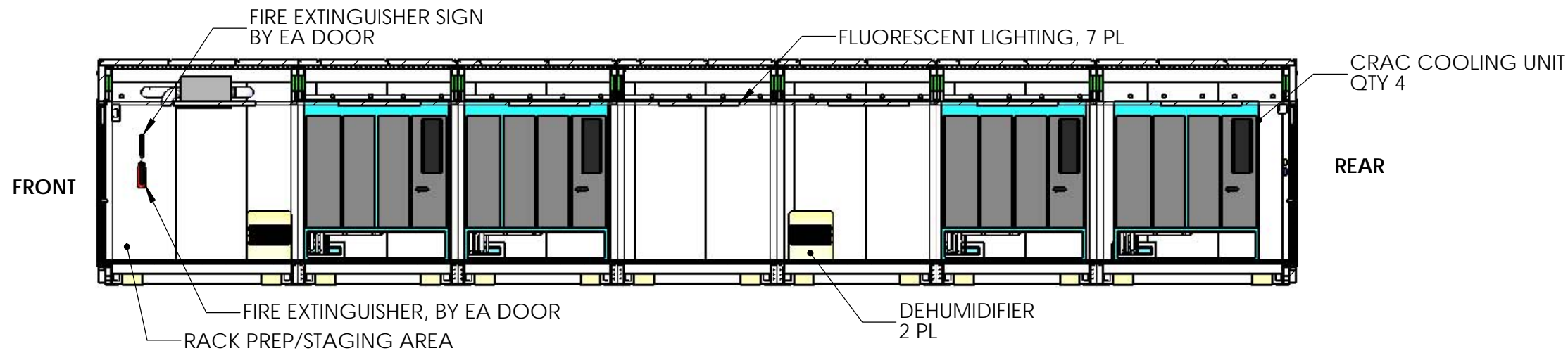
SECTION A-A
 SEE SHEET 4, ZONE A4

THIS DRAWING AND SPECIFICATIONS HEREIN ARE THE PROPERTY OF SCHNEIDER ELECTRIC AND SHALL NOT BE COPIED, REPRODUCED OR USED IN WHOLE OR IN PART, AS THE BASIS FOR THE MANUFACTURE OR SALE OF ITEMS WITHOUT WRITTEN PERMISSION FROM SCHNEIDER ELECTRIC. THIS DRAWING IS BASED UPON LATEST AVAILABLE INFORMATION AND IS SUBJECT TO CHANGE WITHOUT NOTICE. CONSULT USER MANUAL FOR COMPLETE INSTALLATION AND OPERATING INSTRUCTIONS	UNLESS NOTED, DIMENSIONS IN MILLIMETERS & TOLERANCES ARE: X* ± 1* X.X* ± 0.5* X.XX ± 0.30 mm	XXXX ± 25 mm XXX ± 10 mm XX ± 5 mm X ± 1 mm X.X ± 0.5 mm X.XX ± 0.30 mm	SHEET DESCRIPTION INTERNAL DIM - SECT A		DESCRIPTION SMARTSHELTER DATA HALL WITH PERIMETER COOLING & PDU; 480V/60HZ	DRAWING PFMIEA500C2N097A		
			SCALE: TO NOT SCALE DRW 1:75 THIRD ANGLE PROJECTION			PRODUCT: PREFAB SOLUTIONS	FILE ID: PFMIEA500C2N097A Multi Bay IT NAM Perimeter PDU	DRAWN: K SCHALLER 17 JUN 2015 REV 03



SECTION B-B
SEE SHEET 4, ZONE A4

THIS DRAWING AND SPECIFICATIONS HEREIN ARE THE PROPERTY OF SCHNEIDER ELECTRIC AND SHALL NOT BE COPIED, REPRODUCED OR USED IN WHOLE OR IN PART, AS THE BASIS FOR THE MANUFACTURE OR SALE OF ITEMS WITHOUT WRITTEN PERMISSION FROM SCHNEIDER ELECTRIC. THIS DRAWING IS BASED UPON LATEST AVAILABLE INFORMATION AND IS SUBJECT TO CHANGE WITHOUT NOTICE. CONSULT USER MANUAL FOR COMPLETE INSTALLATION AND OPERATING INSTRUCTIONS	UNLESS NOTED, DIMENSIONS IN MILLIMETERS & TOLERANCES ARE: XXXX ± 25 mm XXX ± 10 mm XX ± 5 mm X ± 1 mm X.X ± 0.5 mm X.XX ± 0.30 mm X* ± 1" X.X* ± 0.5"	SHEET DESCRIPTION INTERNAL COMPONENTS - SECT B SCALE: AS NOTED OR 1:70 THIRD ANGLE PROJECTION		DESCRIPTION SMARTSHELTER DATA HALL WITH PERIMETER COOLING & PDU; 480V/60HZ FILE ID: PFMIEA500C2N097A Multi Bay IT NAM Perimeter PDU	DRAWING: PFMIEA500C2N097A		
					DRAWN: K SCHALLER	17 JUN 2015	REV 03
					APPROVED: B STEWART	30 JUL 2015	SIZE B
				ENGINEER: K SCHALLER	SHEET 6 OF 9		



FOR ADDITIONAL DETAIL SEE:
 FIRE SUPPRESSION DRAWING - PFMIEX500-FS
 ELECTRICAL PANEL DRAWING - PFMIEX500-EL
 LIGHTING DRAWING - PFMIEX500-LT
 MONITORING DRAWING - PFMIEXXXXXXXXXX_MONITORING
 GROUNDING DRAWING - PFMIEXXXXXXXXXX_GROUNDING
 ELECTRICAL ONELINE DRW - PRMIEA500C2N097A_ELEC_ONELINE

THIS DRAWING AND SPECIFICATIONS HEREIN ARE THE PROPERTY OF SCHNEIDER ELECTRIC AND SHALL NOT BE COPIED, REPRODUCED OR USED IN WHOLE OR IN PART, AS THE BASIS FOR THE MANUFACTURE OR SALE OF ITEMS WITHOUT WRITTEN PERMISSION FROM SCHNEIDER ELECTRIC. THIS DRAWING IS BASED UPON LATEST AVAILABLE INFORMATION AND IS SUBJECT TO CHANGE WITHOUT NOTICE.

CONSULT USER MANUAL FOR COMPLETE INSTALLATION AND OPERATING INSTRUCTIONS

UNLESS NOTED, DIMENSIONS IN MILLIMETERS & TOLERANCES ARE:
 XXXX ± 25 mm
 XXX ± 10 mm
 XX ± 5 mm
 X ± 1 mm
 X.X ± 0.5 mm
 X.XX ± 0.30 mm

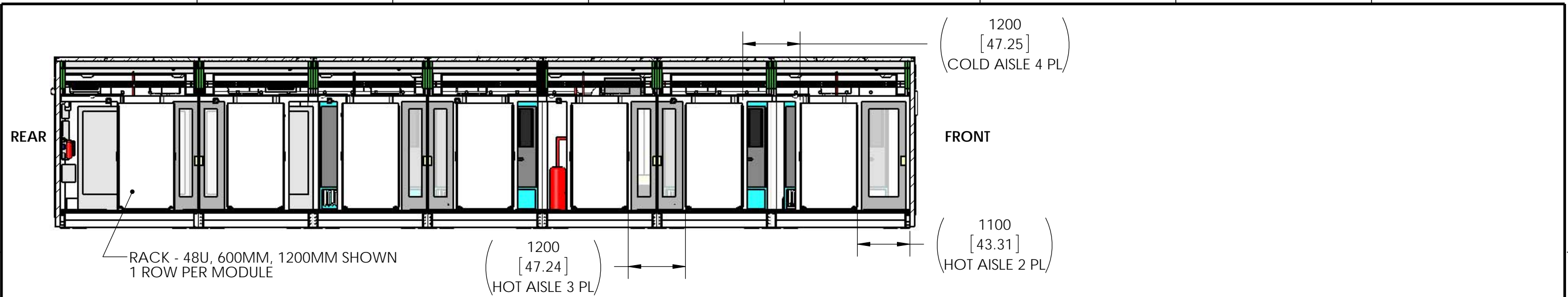
BRACKETED DIMENSIONS ARE IN INCHES & ARE FOR REFERENCE ONLY

SHEET DESCRIPTION
 SECTION C-E
 SCALE: AS NOTED OR 1:80
 THIRD ANGLE PROJECTION

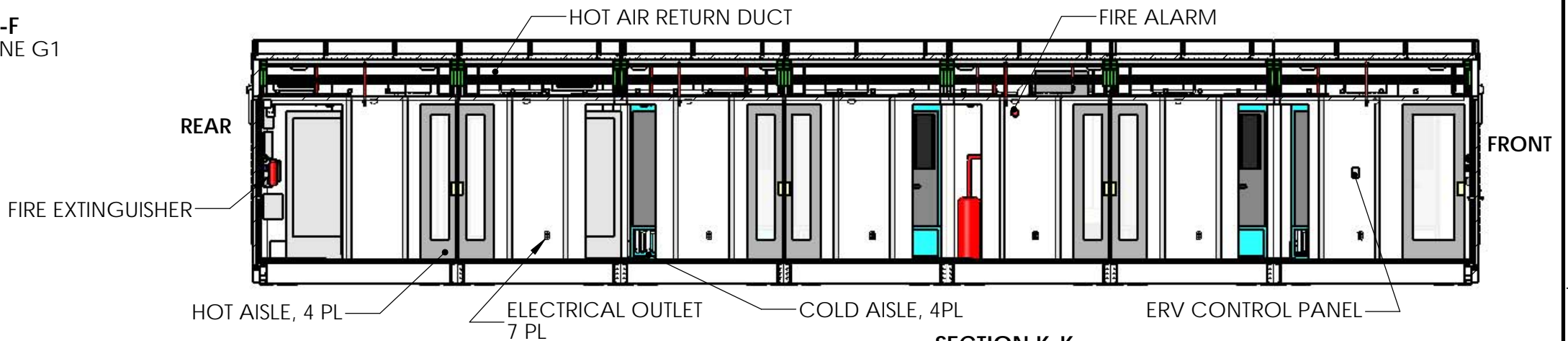


DESCRIPTION
 SMARTSHELTER DATA HALL WITH PERIMETER COOLING & PDU; 480V/60HZ
 PRODUCT: PREFAB SOLUTIONS

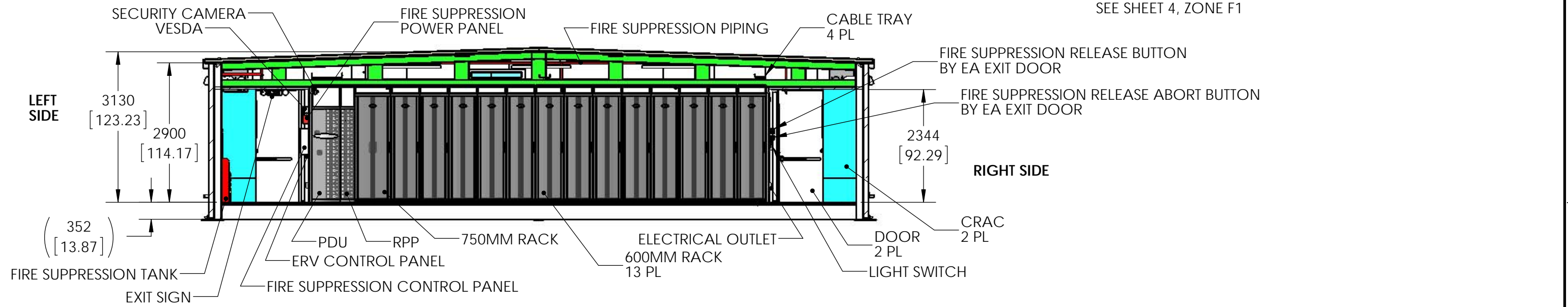
DRAWING		PFMIEA500C2N097A	
DRAWN:	K SCHALLER	17 JUN 2015	REV 03
APPROVED:	B STEWART	30 JUL 2015	SIZE B
ENGINEER:	K SCHALLER	SHEET 7 OF 9	



SECTION F-F
SEE SHEET 4, ZONE G1

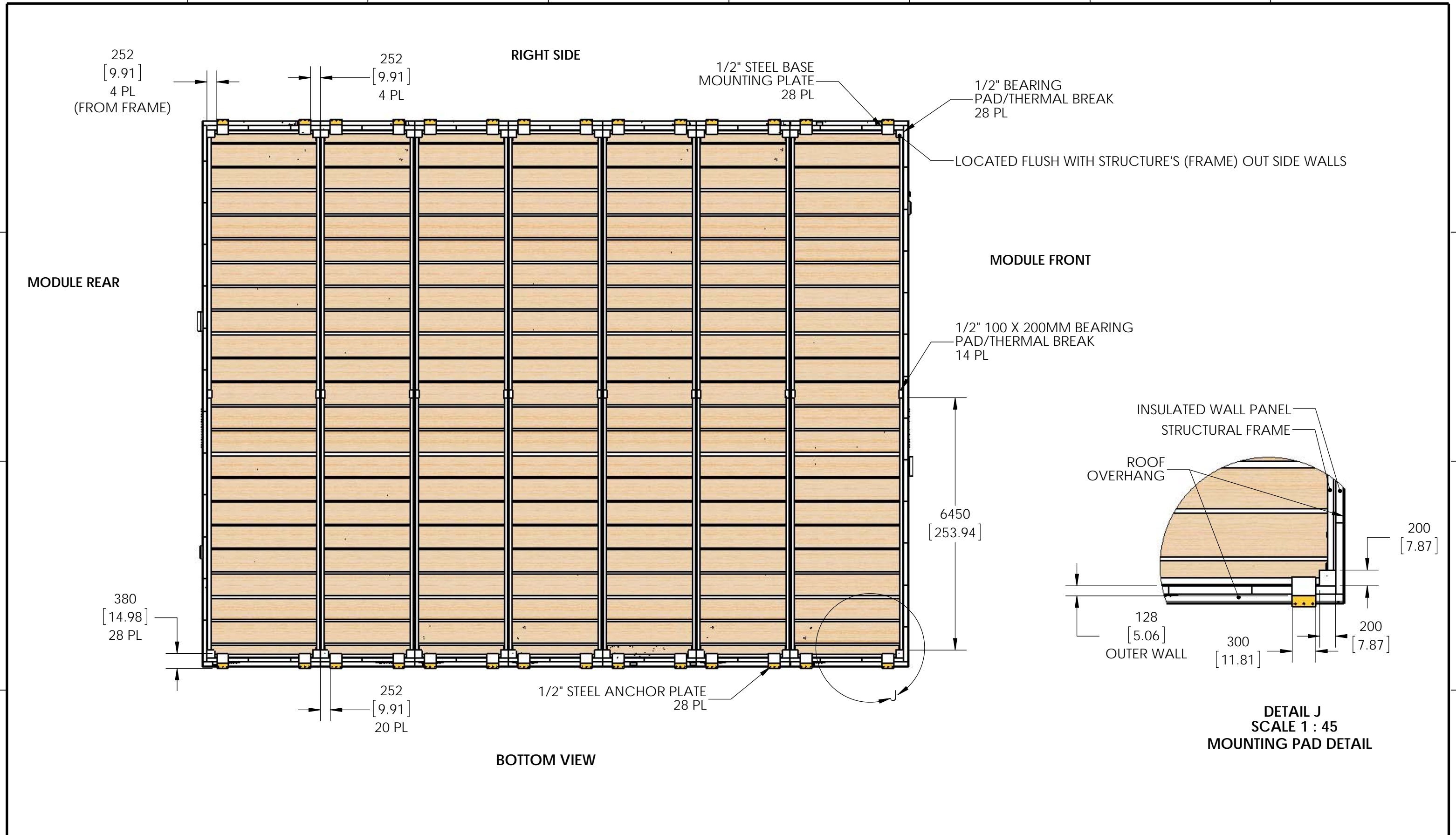


SECTION K-K
SEE SHEET 4, ZONE F1



SECTION G-G
SCALE 1 : 45
COLD AISLE (HOT AISLE WOULD HAVE SIMILAR VIEW)
SEE SHEET 2, ZONE G1

THIS DRAWING AND SPECIFICATIONS HEREIN ARE THE PROPERTY OF SCHNEIDER ELECTRIC AND SHALL NOT BE COPIED, REPRODUCED OR USED IN WHOLE OR IN PART, AS THE BASIS FOR THE MANUFACTURE OR SALE OF ITEMS WITHOUT WRITTEN PERMISSION FROM SCHNEIDER ELECTRIC. THIS DRAWING IS BASED UPON LATEST AVAILABLE INFORMATION AND IS SUBJECT TO CHANGE WITHOUT NOTICE. CONSULT USER MANUAL FOR COMPLETE INSTALLATION AND OPERATING INSTRUCTIONS	UNLESS NOTED, DIMENSIONS IN MILLIMETERS & TOLERANCES ARE: X* ± 1* X.X* ± 0.5* X.XX ± 0.30 mm	XXXX ± 25 mm XXX ± 10 mm XX ± 5 mm X ± 1 mm X.X ± 0.5 mm X.XX ± 0.30 mm	SECTION DESCRIPTION	Schneider Electric SMARTSHELTER DATA HALL WITH PERIMETER COOLING & PDU; 480V/60HZ PRODUCT: PREFAB SOLUTIONS	DRAWING	PFMIEA500C2N097A				
			SECTION F, G, K		SCALE: TO NOT SCALE DRW	1:80	DRAWN:	K SCHALLER	17 JUN 2015	REV 03
			THIRD ANGLE PROJECTION		FILE ID	PFMIEA500C2N097A Multi Bay IT NAM Perimeter PDU	APPROVED:	B STEWART	30 JUL 2015	SIZE B



THIS DRAWING AND SPECIFICATIONS HEREIN ARE THE PROPERTY OF SCHNEIDER ELECTRIC AND SHALL NOT BE COPIED, REPRODUCED OR USED IN WHOLE OR IN PART, AS THE BASIS FOR THE MANUFACTURE OR SALE OF ITEMS WITHOUT WRITTEN PERMISSION FROM SCHNEIDER ELECTRIC. THIS DRAWING IS BASED UPON LATEST AVAILABLE INFORMATION AND IS SUBJECT TO CHANGE WITHOUT NOTICE. CONSULT USER MANUAL FOR COMPLETE INSTALLATION AND OPERATING INSTRUCTIONS	UNLESS NOTED, DIMENSIONS IN MILLIMETERS & TOLERANCES ARE: X* +1* X.X* +0.5* XXXX ± 25 mm XXX ± 10 mm XX ± 5 mm X ± 1 mm X.X ± 0.5 mm X.XX ± 0.30 mm	SHEET DESCRIPTION MOUNTING PAD SCALE: AS NOTED OR 1:90 THIRD ANGLE PROJECTION		DESCRIPTION SMARTSHELTER DATA HALL WITH PERIMETER COOLING & PDU; 480V/60HZ FILE ID: PFMIEA500C2N097A Multi Bay IT NAM Perimeter PDU	DRAWING: PFMIEA500C2N097A		
					DRAWN: K SCHALLER APPROVED: B STEWART ENGINEER: K SCHALLER	17 JUN 2015 30 JUL 2015	REV 03 SIZE B