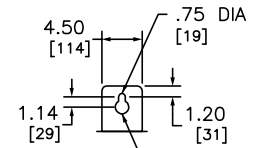


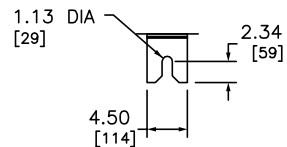
TENANT CIRCUIT BREAKERS (ORDER ONE PER SOCKET POSITION)			
TENANT CIRCUIT BREAKER (2-POLE)	AMPERE RATINGS MIN. - MAX.	SHORT CIRCUIT BREAKER RATING RMS SYMMETRICAL AMPERES MAX.	VOLTS MAX.
QO	40 - 125	10,000	240/120
QBP-TM	70 - 225	10,000	
QO-VH	40 - 60	22,000	
QDP-TM	70 - 225	25,000	
QOH	40 - 60	42,000	
QGP-TM	70 - 225	65,000	
QJP-TM	70 - 225	100,000	

◆ FOR QO TYPE CIRCUIT BREAKERS ADAPTER KIT CAT. NO. EZM125QOA IS REQUIRED (ORDER SEPARATELY, ONE KIT PER POSITION).

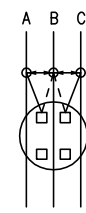
NOTE: FOR USE ON 240/120 VAC DELTA SYSTEM (IN), 120/240 VAC SERVICE (OUT) ADD SUFFIX "CA" TO CATALOG NUMBER (EXAMPLE: EZMT312225CA). BOTH METER SOCKETS PHASED "A" AND "C", VERTICAL "B" BUS REMOVED FROM THIS DEVICE.



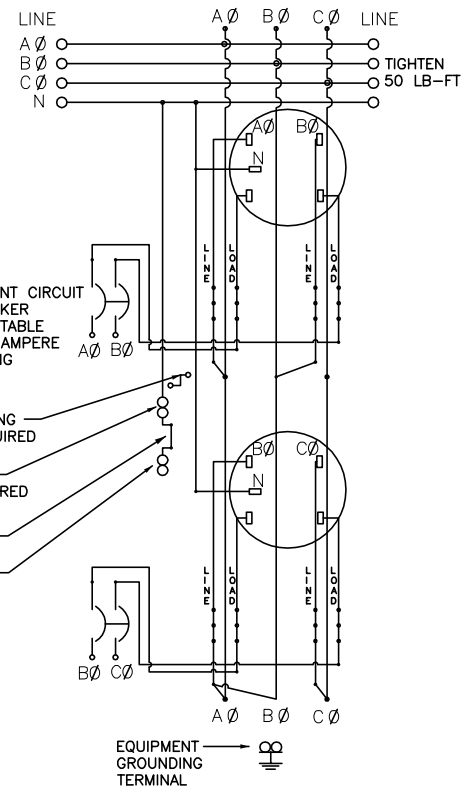
TOP MOUNTING BRACKET



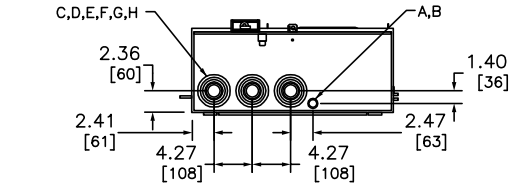
BOTTOM MOUNTING BRACKET



EACH SOCKET LINE CONNECTOR MAY BE MOVED TO BALANCE LOADING. PHASE AC, BC OR AB. THIS DEVICE LEAVES THE FACTORY PHASED AB AND BC TOP TO BOTTOM.



DUAL DIMENSIONS: INCHES [MILLIMETERS]



FOR METERING EQUIPMENT SHORT CIRCUIT CURRENT RATINGS REFER TO SQUARE D DIGEST 173, PAGE 2-9.

KNOCKOUT SCHEDULE SYMBOL	CONDUIT SIZE
A	.50
B	.75
C	1.00
D	1.25
E	1.50
F	2.00
G	2.50
H	3.00

NOTE: EACH SOCKET LINE CONNECTOR MAY BE MOVED TO BALANCE LOADING. PHASE MAY BE AC, BC, OR AB. THIS DEVICE LEAVES THE FACTORY PHASED AB AND BC TOP TO BOTTOM.

TENANT CIRCUIT BREAKER (ORDER SEPARATELY)	NEUTRAL AND SERVICE GROUND WIRE RANGE	EQUIPMENT GROUNDING WIRE RANGE
2-POLE SEE TABLE ABOVE	#4-300 KCMIL CU/AL	#14-2/0 AWG CU #12-2/0 AWG AL

NOTES:
FINISH: GRAY BAKED ENAMEL POWDER COAT PAINT OVER CLEANED GALVANNEALED STEEL.
UL LISTED - FILE E-131840, VOL M
SUITABLE FOR USE AS SERVICE EQUIPMENT.
MAIN HORIZONTAL CROSS BUS RATED 1200A.
100,000 RMS SYMMETRICAL AMPERES MAXIMUM
METER CENTER SHORT CIRCUIT CURRENT RATING.
UNMETERED COMPARTMENTS ARE SEALABLE BY UTILITY.
GANGABLE MULTI-METERING EQUIPMENT IS DESIGNED FOR WALL MOUNTING ONLY (NOT SUITABLE FOR USE AS FLOOR STANDING EQUIPMENT).
THE 5TH JAW CAN BE REMOVED IN THE FIELD BY REMOVING 2 SCREWS.
ALL COMMERCIAL METERS COME STANDARD WITH 5TH JAW FACTORY INSTALLED

SYSTEM TYPE (IN)	SERVICE PROVIDED (OUT)	MAIN BUS RATING	CATALOG NUMBER	METER SOCKET TYPE	NUMBER OF POSITIONS
3PH-4W 208Y/120 VAC	1PH-3W 120/208 VAC	1200 A	EZMT312225	5-JAW TEST BLOCK BYPASS RING STYLE	2

◆ FOR 240/120 VAC DELTA SEE NOTE ABOVE

TWO POSITION EZ METER-PAK METERING EQUIPMENT BRANCH UNIT INCLUDES METER SOCKETS WITH TEST BLOCK BYPASS, AND PROVISIONS FOR MOUNTING 225A MAX. TENANT CIRCUIT BREAKERS NEMA TYPE 3R ENCLOSURE, MEETS EUSERC 311/312 DRAWINGS

SQUARE D
by Schneider Electric
DWG# 3276
No.