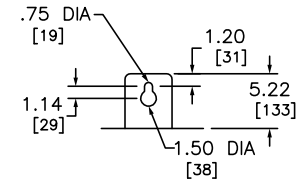
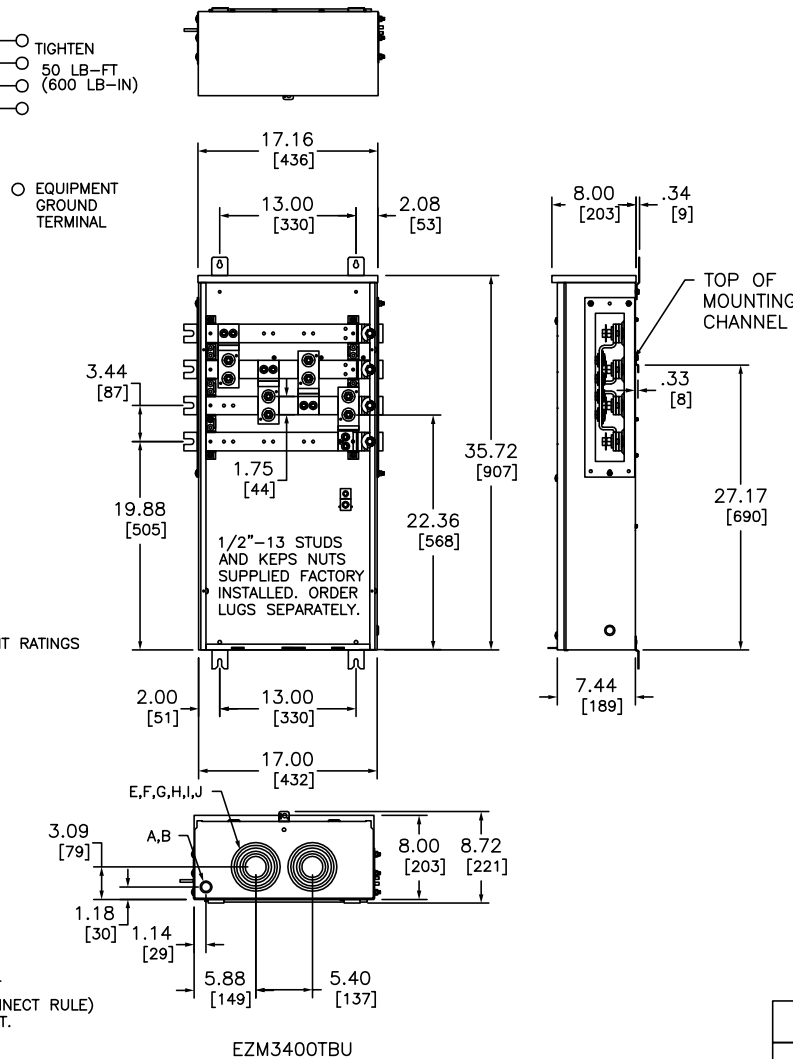


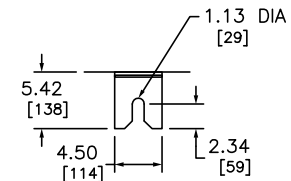
NOTE: SUPPLIED WITH ISOLATED NEUTRAL. NEUTRAL CAN NOT BE BONDED.

KO	CONDUIT SIZE	KO DIA.
A	.50	.87
B	.75	1.12
E	1.50	2.00
F	2.00	2.50
G	2.50	3.00
H	3.00	3.62
I	3.50	4.12
J	4.00	4.62

FOR METERING EQUIPMENT SHORT CIRCUIT CURRENT RATINGS REFER TO SQUARE D DIGEST 173, PAGE 2-9.



TOP MOUNTING BRACKET



BOTTOM MOUNTING BRACKET

THE FOLLOWING LUGS MAY BE FIELD INSTALLED ON THE LUG LANDING PADS.

MANUFACTURER	CATALOG NUMBER	WIRE RANGE AWG/kcmil	TORQUE (LB-IN)
ANDERSON	VHCL-500-12BN	4/0 - 500 CU	N/A
	VHCL-600-12BN	250 - 600 CU	N/A
	VHCL-750-12BN	500 - 750 CU	N/A
ILSCO	L1D2 - 600	#2 - 600 AL-CU	550
	TA-600-2N	#2 - 600 AL-CU	375
CMC	TA-800-2N	300 - 800 AL-CU	500
	L1D2-800	300 - 800 AL-CU	550
ANDERSON	A1B2-600-2	#2 - 600 AL-CU	375
ANDERSON	L1D2 - 800	300 - 800 AL-CU	550
EQUIPMENT GROUND TERMINAL	SUPPLIED FACTORY INSTALLED	#6 - 300 AL-CU	275

1/2"-13 STUDS AND KEPS NUTS SUPPLIED AS MOUNTING HARDWARE FOR LUGS (ORDER LUGS SEPARATELY).

LUG KIT CATALOG NUMBER CMEK4 INCLUDES A QUANTITY OF (4) TA-600-2N, ILSCO LUGS AND IS AVAILABLE FROM SQUARE D.

TYPE VHCL ANDERSON VERSATILE LUGS REQUIRE THE USE OF ANDERSON VERSA-CRIMP TOOL VC6-FT, VC7-FT OR VC8.

SYSTEM TYPE (IN)	SERVICE PROVIDED (OUT)	MAIN BUS RATING	CATALOG NUMBER	EQUIPMENT GROUND WIRE RANGE
3PH-4W 240/120 VAC. MAX.	3PH-4W 240/120 VAC. MAX.	800 A	EZM3400TBU	#6-300 KCMIL CU #6-300 KCMIL AU

NOTES:  
 DEVICE SUPPLIED WITH ALUMINUM CROSS BUS AND CONNECTORS. FOR ALL COPPER CURRENT CARRYING BUSSING ADD SUFFIX "CU" AND ORDER CATALOG NUMBER, EZM3400TBU. SUITABLE FOR BOTTOM FEED ONLY.  
 SUITABLE FOR USE ON LINE SIDE OF SERVICE EQUIPMENT  
 WHEN USED WITH TYPE EZMT BRANCH UNITS (6-DISCONNECT RULE) SUITABLE FOR USE ON LOAD SIDE OF SERVICE EQUIPMENT.  
 UL LISTED - FILE E-131840, VOL. M  
 MAIN HORIZONTAL CROSS BUS RATED 800A.  
 100,000 RMS SYMMETRICAL AMPERES MAXIMUM  
 METER CENTER SHORT CIRCUIT CURRENT RATING WITH APPROPRIATE UPSTREAM SERVICE DISCONNECT.  
 UNMETERED COMPARTMENTS ARE SEALABLE BY UTILITY.  
 GANGABLE MULTI-METERING EQUIPMENT IS DESIGNED FOR WALL MOUNTING ONLY (NOT SUITABLE FOR USE AS FLOOR STANDING EQUIPMENT).  
 FINISH: GRAY BAKED ENAMEL POWDER COAT PAINT OVER CLEANED GALVANNEALED STEEL.

EZ METER-PAK METERING EQUIPMENT  
 400A TERMINAL BOX (UNDERGROUND ONLY)  
 3-PHASE, 4-WIRE, 240 VAC, NEMA TYPE 3R  
 ENCLOSURE, MEETS EUSERC REQUIREMENTS DRAWING 343



DWG# 3267  
 No.