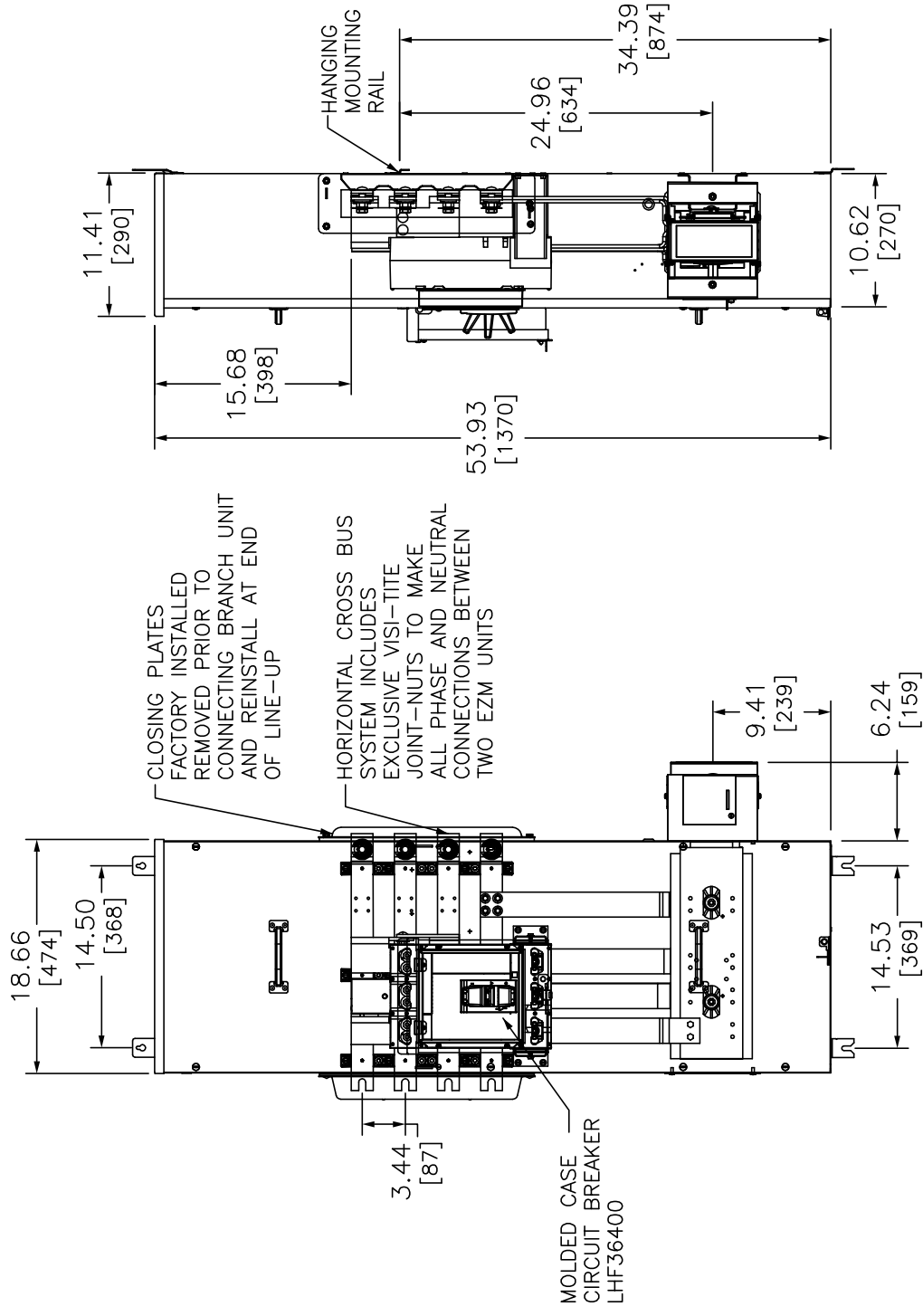
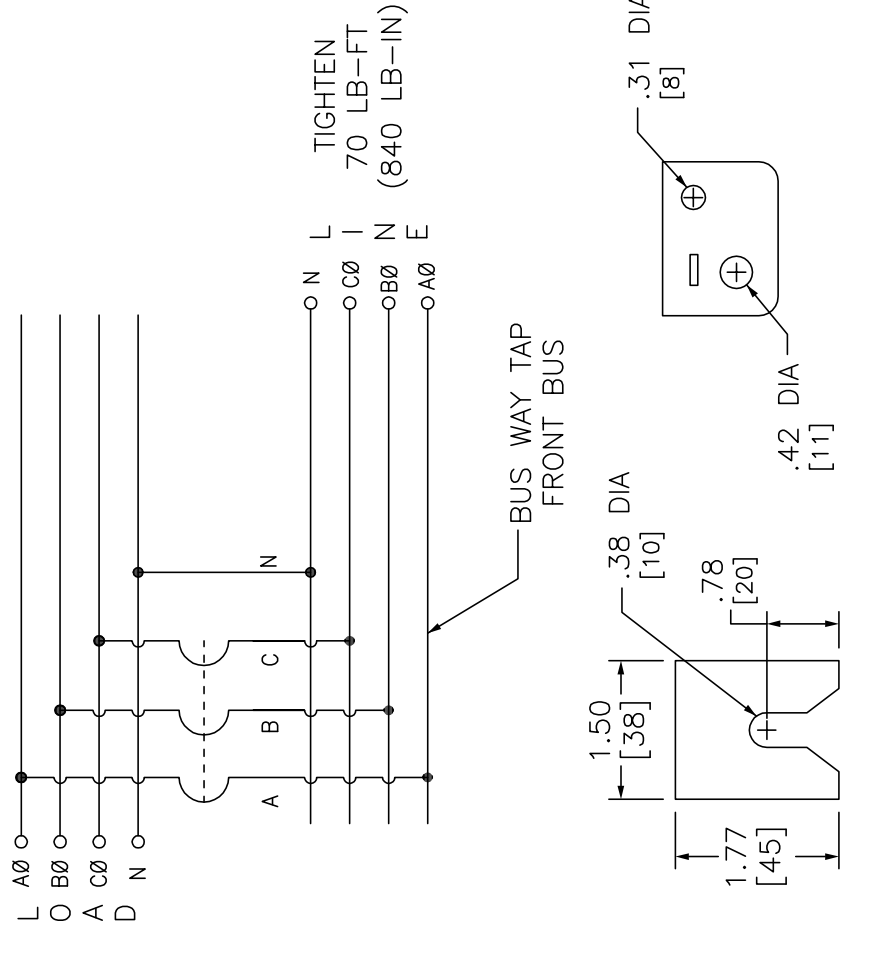


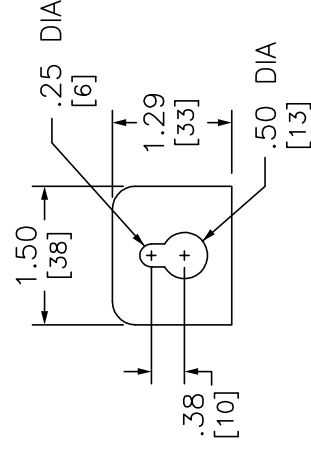
KNOCKOUTS		
SYMBOL	CONDUIT SIZE	
	IN	
	MM	
A	.50	13
B	.75	19



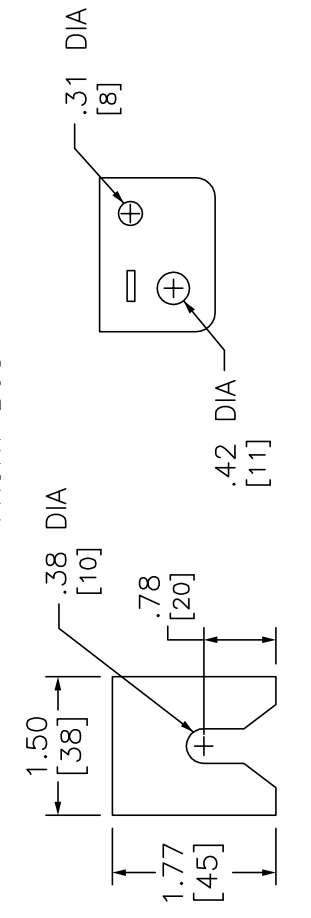
208Y/120VAC, 3Ø 4W
240/120VAC, 3Ø 4W



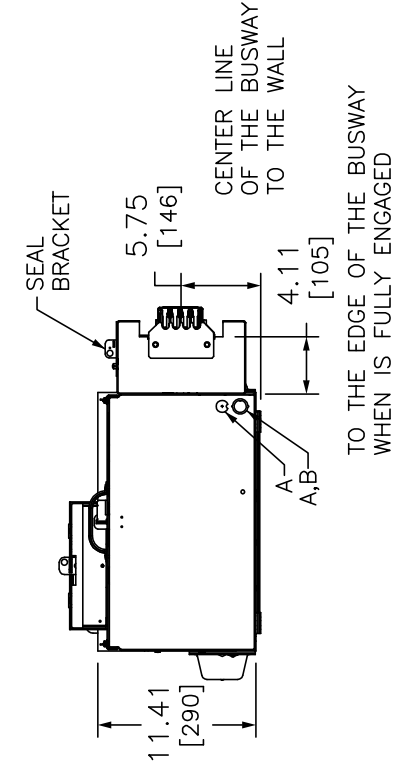
TOP MOUNTING
BRACKET



BOTTOM MOUNTING
BRACKET



SEAL BRACKET



DUAL DIMENSIONS: INCHES
MILLIMETERS

SYSTEM TYPE	MAIN RATING (AMPERES)	CATALOG NUMBER	MOLDED CASE BREAKER (FACTORY INSTALLED) INTERRUPTING RATING 65kA @ 240V
3Ø 4W 208Y/120VAC OR 240/120VAC DELTA	400	EZM3400CBNFBTR	LHF36400

NFBTR SUFFIX MEANS [NEUTRAL FRONT BUS TAP RIGHT]

NOTES:
FINISH - GRAY BAKED ENAMEL POWDER COAT PAINT OVER CLEANED GALVANNEALED STEEL.
UL LISTED - FILE E131840, VOL. M
MAIN HORIZONTAL CROSS BUS RATED AT 800 AMPERES. ALUMINUM 1/4 x 1-3/4 TWO LAMINATIONS
MAIN DEVICES ARE SEALABLE BY UTILITY.
GANGABLE MULTI-METERING EQUIPMENT IS DESIGNED FOR WALL MOUNTING ONLY.
(NOT SUITABLE FOR FLOOR STANDING EQUIPMENT.)
400AMP MAIN CIRCUIT BREAKER SUITABLE FOR USE ONLY WITH BRANCH DEVICES.
GROUND CONTINUITY IS MAINTAINED THROUGH THE ENCLOSURE WITH BUSWAY BONDING BRACKETS.

EZ METER-PAK GANGABLE
MULTI-METERING EQUIPMENT
400A 3PH 4W MAIN CIRCUIT BREAKER
BUSWAY FEED RIGHT SIDE
INDOOR TYPE 1 ENCLOSURE

SQUARE D
by Schneider Electric

DWG# PWFDS-SYRS-XXXX
NO.