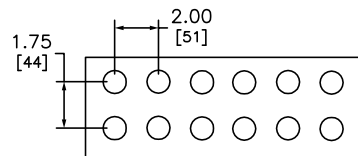
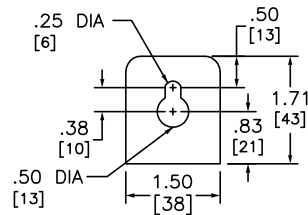


NO KNOCKOUTS PROVIDED

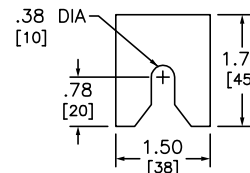


LUG PAD DETAIL

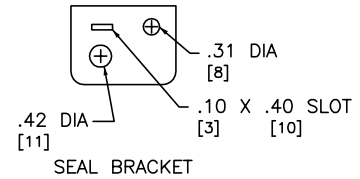
SUPPLIED WITH 1/2-13 X 2.00/[.51] STUDS AND 1/2 - 13 KEPS NUTS



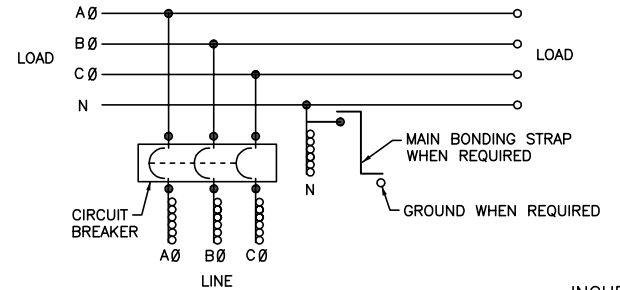
TOP MOUNTING BRACKET



BOTTOM MOUNTING BRACKET



SEAL BRACKET



DUAL DIMENSIONS: INCHES MILLIMETERS

CATALOG NUMBER	LUG QUANTITY PER LINE SIDE PHASE AND NEUTRAL TERMINALS (ORDER SEPARATELY)									
	ANDERSON				ILSCO			CMC		
	VHCL-600-12BN	VHCL-750-12BN	L1D2-600	L1D2-800	2ACL-600	TA-600-2N	TA-800-2N	A1B2-600-2	L1D2-600	L1D2-800
	250-600 CU	500-750 CU	#2-600 AL/CU	#300-750 AL/CU	250-600 AL/CU	#2-600 AL/CU	#300-750 AL/CU	#2-600 AL/CU	#2-600 AL/CU	#300-750 AL/CU
	VC-6 ‡	VC-7 ‡	MECH	MECH	IDT-12	MECH	MECH	MECH	MECH	MECH
EZM31600GCBU	6	6	6	6	6	6	6	6	6	6
EZM31600JCBU	6	6	6	6	6	6	6	6	6	6

‡ INDICATED VERSA-CRIMP CRIMPING TOOL

▲ THIS LUG IS AVAILABLE FROM SQUARE D COMPANY, ORDER CATALOG NUMBER CMEK4, KIT INCLUDES 4 LUGS

SYSTEM TYPE	MAIN RATING (AMPERES)	CATALOG NUMBER	MAIN CIRCUIT BREAKER (FACTORY INSTALLED)	GROUND LUG WIRE RANGE (FACTORY INSTALLED)
3Ø 4W 208Y/120VAC OR 240/120VAC DELTA	1600 ●	EZM31600GCBU EZM31600JCBU	RGF36160U31A (65kA) RJF36160U31A (100kA)	(1) #6-300

● 1600A MAIN CIRCUIT BREAKER DEVICE MUST BE CENTER MOUNTED.

NOTES:
FINISH - GRAY BAKED ENAMEL POWDER COAT PAINT OVER CLEANED GALVANNEALED STEEL.
UL LISTED - FILE E131840, VOL. M
SUITABLE FOR USE AS SERVICE EQUIPMENT.
MAIN HORIZONTAL CROSS BUS RATED AT 1200 AMPERES.
MAIN DEVICES ARE SEALABLE BY UTILITY.
GANGABLE MULTI-METERING EQUIPMENT IS DESIGNED FOR WALL MOUNTING ONLY.
(NOT SUITABLE FOR FLOOR STANDING EQUIPMENT.)
DOES NOT MEET EUSERC REQUIREMENTS.

EZ METER-PAK GANGABLE
MULTI-METERING EQUIPMENT
1600A, 3PH 4W MAIN CIRCUIT BREAKER DEVICE
UNDERGROUND FEED ONLY
RAINPROOF NEMA TYPE 3R ENCLOSURE



DWG# PWFDS-SYTI-0008
NO.

EZM31600GCBU, EZM31600JCBU