

**ADDITIONAL NOTES:**

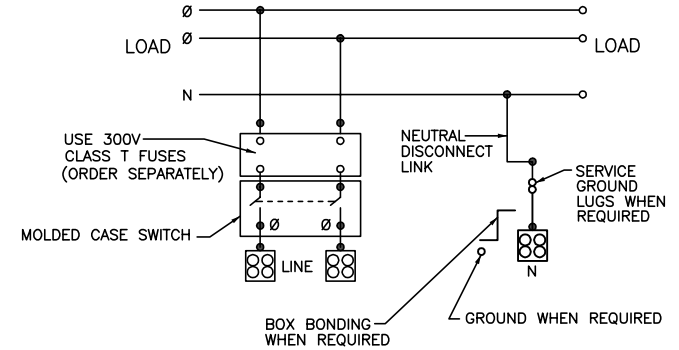
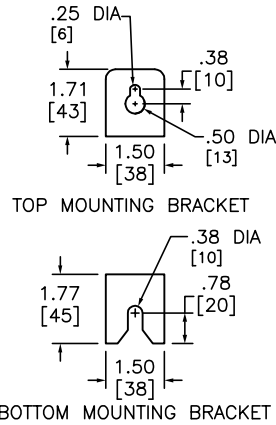
WHEN USED AS SERVICE EQUIPMENT, INSTALL BONDING STRAP AND REINSTALL GROUND LUG WHERE APPROPRIATE.

● HANDLE EXTENSION AVAILABLE M-FRAME BREAKER ORDER KIT 33195.

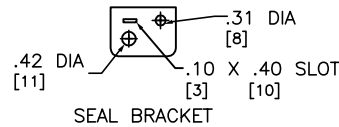
▲ THIS LUG IS AVAILABLE FROM SQUARE D. ORDER CATALOG NUMBER CMEK4, KIT INCLUDES 4 LUGS.

± INDICATED VERSA-CRIMP CRIMPING TOOL.

| KNOCKOUTS |              |     |
|-----------|--------------|-----|
| SYMBOL    | CONDUIT SIZE |     |
|           | IN           | MM  |
| A         | .50          | 13  |
| B         | .75          | 19  |
| E         | 1.50         | 38  |
| F         | 2.00         | 51  |
| G         | 2.50         | 64  |
| H         | 3.00         | 76  |
| I         | 3.50         | 89  |
| J         | 4.00         | 102 |



DUAL DIMENSIONS: INCHES  
MILLIMETERS



| CATALOG NUMBER | ALTERNATE LUG QUANTITY PER LINE SIDE PHASE AND NEUTRAL TERMINALS (ORDER SEPARATELY) |               |              |               |              |                      |              |                     |
|----------------|---|---------------|--------------|---------------|--------------|----------------------|--------------|---------------------|
|                | ANDERSON  |               |              |               | ILSCO        |                      | CMC          |                     |
|                | VHCL-600-12BN   | VHCL-750-12BN | LID2-600     | 2ACL-600      | TA-600-2N▲   | AU-600-2N (2-BARREL) | A1B2-600-2   | 2AB2-600 (2-BARREL) |
|                | 250-600 CU  | 500-750 CU    | #2-600 AL/CU | 250-600 AL/CU | #2-600 AL/CU | (2)#2-600 AL/CU      | #2-600 AL/CU | (2)#2-600 AL/CU     |
|                | VC-6±   | VC-7±         | MECH         | IDT-12        | MECH         | MECH                 | MECH         | MECH                |
| EZM1600FSU     | 2   | 2             | 2            | 2             | 2            | 1                    | 2            | 1                   |
| EZM1800FSU     | 2   | 2             | 2            | 2             | 2            | 1                    | 2            | 1                   |

| SYSTEM TYPE | MAIN RATING (AMPERES) | CATALOG NUMBER * | MOLDED CASE SWITCH (FACTORY INSTALLED) | PROVISIONS TO MOUNT 300V CLASS T FUSES (ORDER SEPARATELY) FUSE RANGE AVAILABLE | LINE PHASE AND NEUTRAL LUG LANDING PADS PROVIDED FOR USE WITH CRIMP-TYPE LUGS (2-HOLE MOUNTING) QUANTITY OF LUGS PER PAD | GROUND LUG WIRE RANGE (FACTORY INSTALLED) |
|-------------|-----------------------|------------------|--|--|--|---|
| 1Ø 3W       | 600                   | EZM1600FSU       | MJF22000Z60 (100kA)                    | 450-600A   | 2 (ORDER LUGS SEPARATELY)  | (1) #6-300                                |
| 120/240VAC  | 800                   | EZM1800FSU       | MJF22000Z80 (100kA)                    | 601-800A   | 2 (ORDER LUGS SEPARATELY)  | (1) #6-300                                |

FUSES NOT INCLUDED, ORDER 300V CLASS T FUSES 100kA SCCR (INTERRUPTING RATING RMS SYMMETRICAL)

NOTES:  
FINISH - GRAY BAKED ENAMEL POWDER COAT PAINT OVER CLEANED GALVANNEALED STEEL.  
UL LISTED - FILE E-10582, VOL. M, E-131840, VOL. M  
SUITABLE FOR USE AS SERVICE EQUIPMENT.  
MAIN HORIZONTAL CROSS BUS RATED AT 800 AMPERES (ALUMINUM 1/4 X 1 3/4 TWO LAMINATIONS)  
MAIN DEVICES ARE SEALABLE BY UTILITY.  
GANGABLE MULTI-METERING EQUIPMENT IS DESIGNED FOR WALL MOUNTING ONLY.  
(NOT SUITABLE FOR FLOOR STANDING EQUIPMENT.)  
\* MEETS EUSERC STANDARDS FOR WEST COAST BASED UTILITIES. DRAWING 315

EZ METER-PAK GANGABLE  
MULTI-METERING EQUIPMENT  
1600A 1PH 3W MAIN CIRCUIT BREAKER DEVICE W/ERMS  
UNDERGROUND FEED ONLY  
RAINFOOF TYPE 3R ENCLOSURE



DWG# PWFDS-SYRS-0170  
No.

EZM1600FSU\_EZM1800FSU