

NOTES:

1. ALL DIMENSIONS ARE IN INCHES [MILLIMETERS].
2. NET WEIGHT IS 4.40 LBS [2.00 kg]
3. LENGTH OF THE CORD IS 98.50 INCHES [2500 mm].
4. MOUNTING BRACKET IS AN ALTERNATIVE MOUNTING METHOD TO THE TOOLLESS MOUNT FOR NON APC RACKS.
5. BRACKET KITS TO MOUNT TO SPECIFIC COMPETITORS RACKS ARE AVAILABLE AS OPTIONS.
6. INSTALLATION MUST COMPLY WITH ALL APPLICABLE NATIONAL AND LOCAL CODES.

THIS DRAWING AND SPECIFICATIONS HEREIN ARE THE PROPERTY OF AMERICAN POWER CONVERSION AND SHALL NOT BE COPIED, REPRODUCED OR USED IN WHOLE OR IN PART, AS THE BASIS FOR THE MANUFACTURE OR SALE OF ITEMS WITHOUT WRITTEN PERMISSION FROM APC. THIS DRAWING IS BASED UPON LATEST AVAILABLE INFORMATION AND IS SUBJECT TO CHANGE WITHOUT NOTICE.

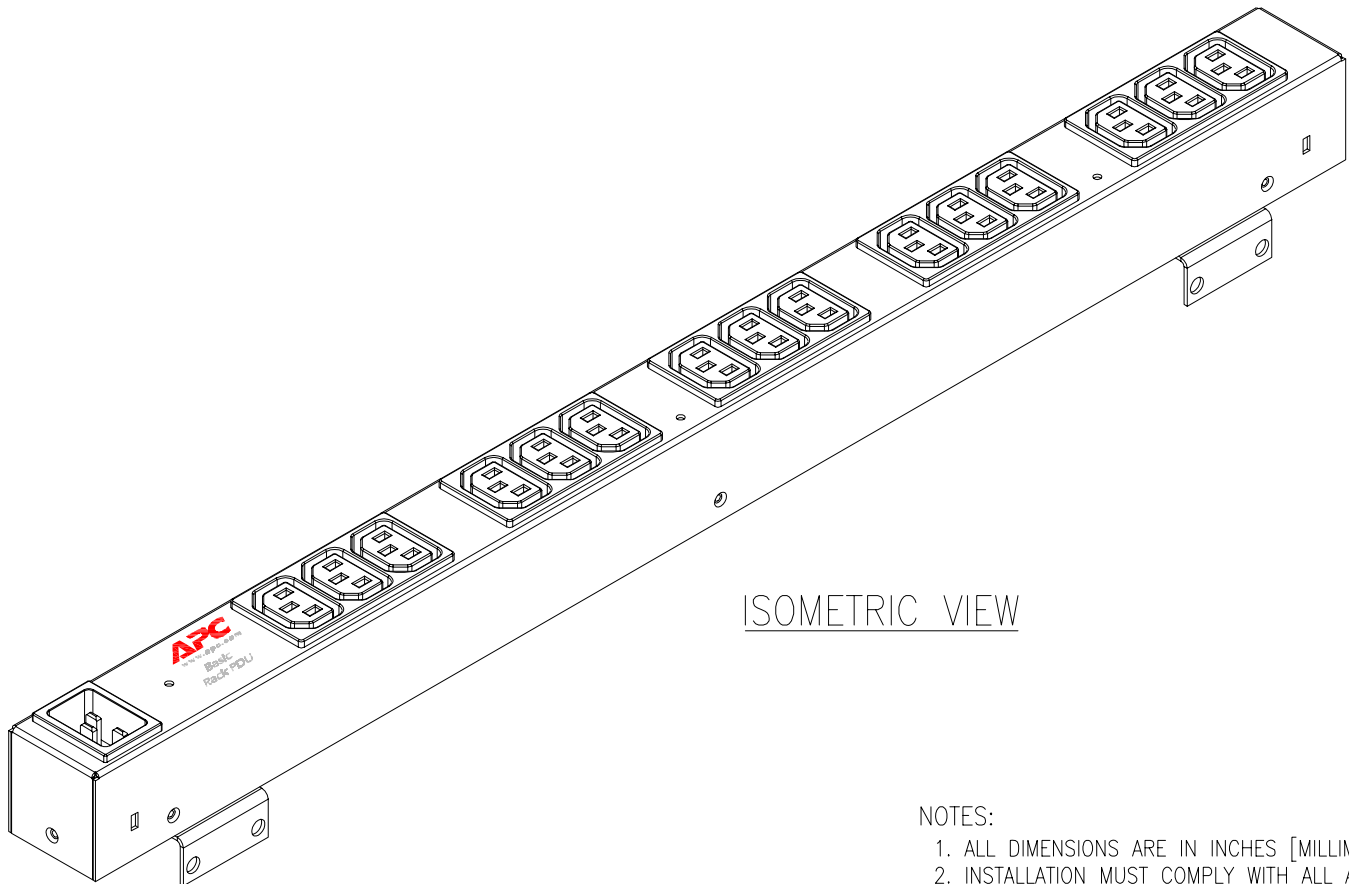
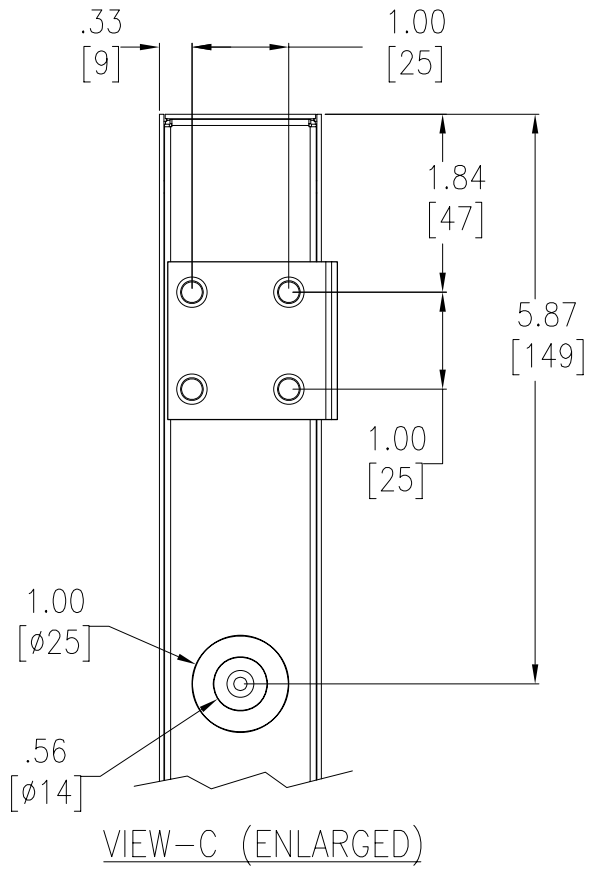
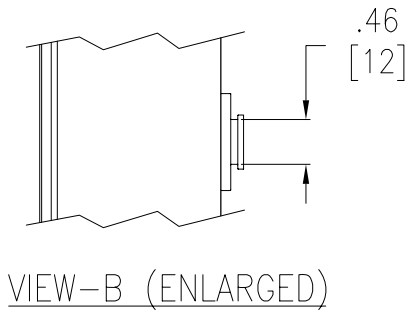
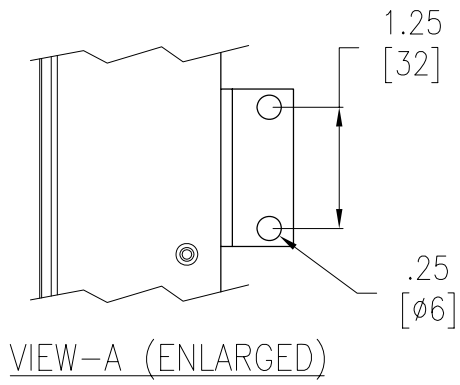
TITLE: RACK PDU, BASIC
 ZERO U,16A, 208V/230V, INPUT: IEC-320 C20
 OUTPUT: (15)IEC-320 C13
 MAIN MECHANICAL

PROJECT: SUBMITTAL DRAWING SHEET 1 OF 2

DWG NO: AP9572-MM1

REV.	-
DRAWN BY:	JAYAPRAKASH
CHECKED BY:	T.HORSTMANN
ENGINEER:	B.SHERIDAN/ E.SILVA
	10/18/06
	10/18/06
	10/18/06





NOTES:

1. ALL DIMENSIONS ARE IN INCHES [MILLIMETERS].
2. INSTALLATION MUST COMPLY WITH ALL APPLICABLE NATIONAL AND LOCAL CODES.

THIS DRAWING AND SPECIFICATIONS HEREIN ARE THE PROPERTY OF AMERICAN POWER CONVERSION AND SHALL NOT BE COPIED, REPRODUCED OR USED IN WHOLE OR IN PART, AS THE BASIS FOR THE MANUFACTURE OR SALE OF ITEMS WITHOUT WRITTEN PERMISSION FROM APC. THIS DRAWING IS BASED UPON LATEST AVAILABLE INFORMATION AND IS SUBJECT TO CHANGE WITHOUT NOTICE.

TITLE: RACK PDU, BASIC
 ZERO U,16A, 208V/230V, INPUT: IEC-320 C20
 OUTPUT: (15)IEC-320 C13
 DETAILS & ISOMETRIC VIEW
 PROJECT: SUBMITTAL DRAWING SHEET 2 OF 2

DWG NO: AP9572-MM2
 REV: -
 DRAWN BY: JAYAPRAKASH 10/18/06
 CHECKED BY: T.HORSTMANN 10/18/06
 ENGINEER: B.SHERIDAN/ E.SILVA 10/18/06

