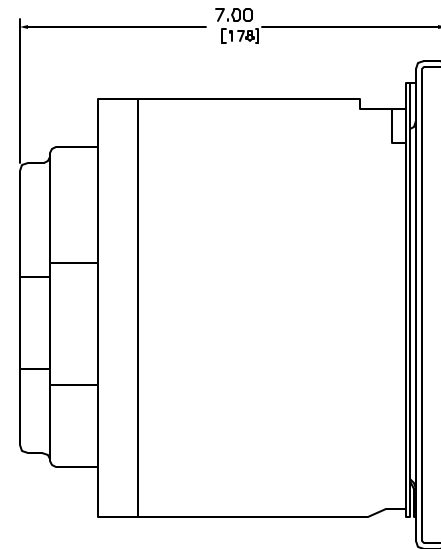
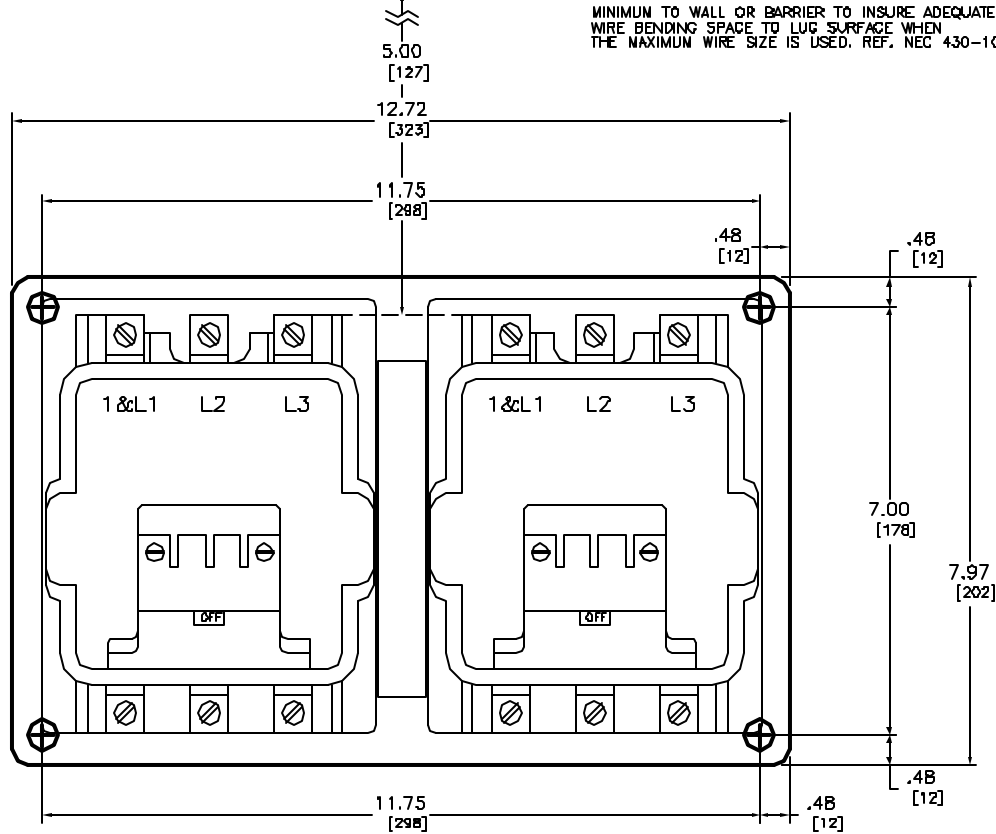


NEMA SIZE 3 REVERSING CONTACTOR  
 3-POLE POLYPHASE - 600 VAC, 50-60 HZ

COIL VOLTAGE CODE (1)	VOLTAGE	
	60 HZ	50 HZ
V01	24	-
V02	120	110
V08	208	-
V03	240	220
V06	480	440
V07	600	550
V99	SPECIFY	SPECIFY

ELECTRICAL CLEARANCE/WIRE BENDING SPACE

MINIMUM TO WALL OR BARRIER TO INSURE ADEQUATE  
 WIRE BENDING SPACE TO LUG SURFACE WHEN  
 THE MAXIMUM WIRE SIZE IS USED. REF. NEC 430-10



Catalog Number: 6702-SE02(1)  
 Ratings: SEE CHART  
 UL File/CCN: E78351/NLDX  
 CSA File/Class: LR00905/3211 0  
 Meets Standards: -  
 Weight: 35.00 lbs  
 Wire Size: POWER - #14-#1/0 | CONTROL - #16-#12  
 Terminal torque: 100 LB/IN  
 Mounting Hwd.: (4) 5/16" screws

DUAL DIMENSIONS: INCHES  
 MILLIMETERS

NEMA SIZE 3 REVERSING CONTACTOR  
 CLASS 6702 TYPE SE02(1)



DWG# E0301401-01  
 NO.