

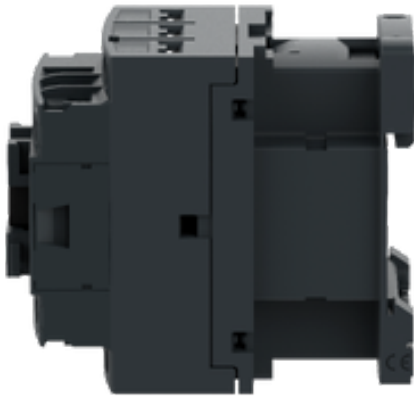
DPE12G7

IEC contactor, Easy TeSys
DPE, nonreversing, 12A, 3P, 5HP at 480V AC, 120V
50/60Hz coil



Product availability: Stock - Normally stocked in distribution facility

Price*: 32.50 USD



Main

| | |
|--------------------------------|-----------------------------------------------------------------------------------------------------------------------------------------------------------------------------------------------------------------------------------------------------------------------------------------------------------------------|
| Range | Easy TeSys |
| Product name | Easy TeSys DPE |
| Product or Component Type | Contacteur |
| Device short name | DPE |
| Contacteur application | Resistive load Motor control |
| Utilisation category | AC-4 AC-1 AC-3 |
| Poles description | 3P |
| Pole contact composition | 3 NO |
| Auxiliary contact composition | 1 NO |
| [Ie] rated operational current | 12 A (at <140 °F (60 °C)) at <= 440 V AC AC-3 for power circuit 25 A (at <140 °F (60 °C)) at <= 440 V AC AC-1 for power circuit |
| [Uc] control circuit voltage | 120 V AC 50/60 Hz |
| Motor power kW | 3 KW 220...230 V AC 50/60 Hz 5.5 KW 380...400 V AC 50/60 Hz 5.5 KW 415 V AC 50/60 Hz 5.5 KW 440 V AC 50/60 Hz 7.5 KW 500 V AC 50/60 Hz 7.5 KW 660...690 V AC 50/60 Hz |
| Maximum Horse Power Rating | 0.33 Hp at 115 V AC 50/60 Hz for 1 phase motors 1 Hp at 230/240 V AC 50/60 Hz for 1 phase motors 2 Hp at 200/208 V AC 50/60 Hz for 3 phase motors 2 Hp at 230/240 V AC 50/60 Hz for 3 phase motors 5 Hp at 460/480 V AC 50/60 Hz for 3 phase motors 7.5 Hp at 575/600 V AC 50/60 Hz for 3 phase motors |

The information provided in this documentation contains general descriptions and/or technical characteristics of the performance of the products contained herein. This documentation is not intended as a substitute for and is not to be used for determining suitability or reliability of these products for specific user applications. It is the duty of any such user or integrator to perform the appropriate and complete risk analysis, evaluation and testing of the products with respect to the relevant specific application or use thereof. Neither Schneider Electric Industries SAS nor any of its affiliates or subsidiaries shall be responsible or liable for misuse of the information contained herein. *Prices are indicative

Complementary

| | |
|---------------------------------------------|--------------------------------------------------------------------------------------------------------------------------------------------------------------------------------------------------------------------------------------------------------------------------------------------------------------------|
| [Ue] rated operational voltage | Power circuit \leq 690 V AC 25...400 Hz Power circuit \leq 300 V DC |
| [Ith] conventional free air thermal current | 10 A (at 140 °F (60 °C)) for signalling circuit 25 A (at 140 °F (60 °C)) for power circuit |
| Irms rated making capacity | 250 A at 440 V for power circuit conforming to IEC 60947 140 A AC for signalling circuit conforming to IEC 60947-5-1 250 A DC for signalling circuit conforming to IEC 60947-5-1 |
| Rated breaking capacity | 250 A at 440 V for power circuit conforming to IEC 60947 |
| Associated fuse rating | 10 A gG for signalling circuit conforming to IEC 60947-5-1 25 A gG at \leq 690 V coordination type 1 for power circuit 20 A gG at \leq 690 V coordination type 2 for power circuit |
| Average impedance | 2.5 MOhm - Ith 25 A 50 Hz for power circuit |
| Power dissipation per pole | 1.56 W AC-1 0.2 W AC-3 |
| Electrical durability | 0.6 Mcycles 25 A AC-1 \leq 440 V 1 Mcycles 12 A AC-3 \leq 440 V |
| Safety reliability level | B10d = 1369863 cycles contactor with nominal load EN/ISO 13849-1 B10d = 20000000 cycles contactor with mechanical load EN/ISO 13849-1 |
| Control circuit type | AC 50/60 Hz |
| Coil technology | Without built-in suppressor module |
| Control circuit voltage limits | Drop-out: 0.3...0.6 U _c at 50/60 Hz (at \leq 158 °F (70 °C)) Operational: 0.8...1.1 U _c at 50 Hz (at \leq 140 °F (60 °C)) Operational: 0.85...1.1 U _c at 60 Hz (at \leq 140 °F (60 °C)) Operational: 1...1.1 U _c at 50/60 Hz (at \leq 158 °F (70 °C)) |
| Inrush power in VA | 70 VA 60 Hz cos phi 0.75 (at 68 °F (20 °C)) 70 VA 50 Hz cos phi 0.75 (at 68 °F (20 °C)) |
| Hold-in power consumption in VA | 7.5 VA 60 Hz cos phi 0.3 (at 68 °F (20 °C)) 7 VA 50 Hz cos phi 0.3 (at 68 °F (20 °C)) |
| Heat dissipation | 2...3 W 50/60 Hz |
| Operating time | 12...22 ms closing 4...19 ms opening |
| Mechanical durability | 10 Mcycles |
| Maximum operating rate | 3600 Cyc/H 140 °F (60 °C) |
| Auxiliary contacts type | Mechanically linked 1 NO IEC 60947-5-1 |
| Minimum switching current | 5 MA for signalling circuit |
| Minimum switching voltage | 17 V for signalling circuit |
| Insulation resistance | $>$ 10 MOhm for signalling circuit |
| Non-overlap time | 1.5 Ms on de-energisation between NC and NO contact 1.5 Ms on energisation between NC and NO contact |
| Signalling circuit frequency | 25...400 Hz |

| | |
|-------------------------|-----------------------------------------------------------------------------------------------------------------------------------------------------------------------------------------------------------------------------------------------------------------------------------------------------------------------------------------------------------------------------------------------------------------------------------------------------------------------------------------------------------------------------------------------------------------------------------------------------------------------------------------------------------------------------------------------------------------------------------------------------------------------------------------------------------------------------------------------------------------------------------------------------------------------------------------------------------------------------------------------------------------------------------------------------------------------------------------------------------------------------------------------------------------------------------------------------------------------------------------------------------------------------------------------------------------------------------------------------------------------------------------------------------------------------------------------------------------------------------------------------------------------------------------------------------------------------------------------------------------------------------------------------------------------------------------------------------------------------------------------------------------|
| Connections - terminals | <p>Power circuit: screw clamp terminals 1 0.00...0.01 in² (1...4 mm²) - cable stiffness: flexible without cable end</p> <p>Power circuit: screw clamp terminals 2 0.00...0.01 in² (1...4 mm²) - cable stiffness: flexible without cable end</p> <p>Power circuit: screw clamp terminals 1 0.00...0.01 in² (1...4 mm²) - cable stiffness: flexible with cable end</p> <p>Power circuit: screw clamp terminals 2 0.00...0.00 in² (1...2.5 mm²) - cable stiffness: flexible with cable end</p> <p>Power circuit: screw clamp terminals 1 0.00...0.01 in² (1...4 mm²) - cable stiffness: solid without cable end</p> <p>Power circuit: screw clamp terminals 2 0.00...0.01 in² (1...4 mm²) - cable stiffness: solid without cable end</p> <p>Control circuit: screw clamp terminals 1 0.00...0.01 in² (1...4 mm²) - cable stiffness: flexible without cable end</p> <p>Control circuit: screw clamp terminals 2 0.00...0.01 in² (1...4 mm²) - cable stiffness: flexible without cable end</p> <p>Control circuit: screw clamp terminals 1 0.00...0.01 in² (1...4 mm²) - cable stiffness: flexible with cable end</p> <p>Control circuit: screw clamp terminals 2 0.00...0.00 in² (1...2.5 mm²) - cable stiffness: flexible with cable end</p> <p>Control circuit: screw clamp terminals 1 0.00...0.01 in² (1...4 mm²) - cable stiffness: solid without cable end</p> <p>Control circuit: screw clamp terminals 2 0.00...0.01 in² (1...4 mm²) - cable stiffness: solid without cable end</p> |
| Tightening torque | <p>Power circuit 15.05 lbf.in (1.7 N.m) screw clamp terminals flat Ø 6 mm</p> <p>Power circuit 15.05 lbf.in (1.7 N.m) screw clamp terminals Philips No 2</p> <p>Control circuit 15.05 lbf.in (1.7 N.m) screw clamp terminals flat Ø 6 mm</p> <p>Control circuit 15.05 lbf.in (1.7 N.m) screw clamp terminals Philips No 2</p> |
| Mounting Support | Rail Plate |
| Height | 3.03 In (77 mm) |
| Width | 1.77 In (45 mm) |
| Depth | 3.39 In (86 mm) |
| Net Weight | 0.71 Lb(US) (0.32 kg) |

Environment

| | |
|----------------------------------------|-------------------------------------------------------------------------------------------------------------------------------------------------------------------------------------------------------|
| [Ui] rated insulation voltage | <p>Power circuit 690 V IEC 60947-4-1</p> <p>Power circuit 600 V CSA</p> <p>Power circuit 600 V UL</p> <p>Signalling circuit 690 V IEC 60947-1</p> |
| Oversvoltage category | III |
| Pollution degree | 3 |
| [Uimp] rated impulse withstand voltage | 6 KV IEC 60947 |
| Standards | <p>CSA C22.2 No 14</p> <p>EN 60947-4-1</p> <p>EN 60947-5-1</p> <p>IEC 60947-4-1</p> <p>IEC 60947-5-1</p> <p>UL 60947-4-1</p> |
| Product Certifications | UL[RETURN]CSA |
| IP degree of protection | IP22 front face IEC 60529 |
| Ambient Air Temperature for Storage | -76...176 °F (-60...80 °C) |
| Ambient Air Temperature for Operation | -40...140 °F (-40...60 °C) |
| Operating altitude | 0...6561.68 ft (0...2000 m) |
| Fire resistance | 1562 °F (850 °C) IEC 60695-2-1 |
| Mechanical robustness | <p>Vibrations contactor open 2 Gn, 5...300 Hz)</p> <p>Vibrations contactor closed 4 Gn, 5...300 Hz)</p> <p>Shocks contactor open 10 Gn for 11 ms)</p> <p>Shocks contactor closed 15 Gn for 11 ms)</p> |

Ordering and shipping details

| | |
|-------------------|---------------|
| Category | US1011322362 |
| Discount Schedule | 0113 |
| GTIN | 3606481063182 |
| Returnability | Yes |
| Country of origin | US |

Packing Units

| | |
|------------------------------|---------------------------|
| Unit Type of Package 1 | PCE |
| Number of Units in Package 1 | 1 |
| Package 1 Height | 3.74 In (9.5 cm) |
| Package 1 Width | 1.77 In (4.5 cm) |
| Package 1 Length | 3.03 In (7.7 cm) |
| Package 1 Weight | 12.35 Oz (350.0 g) |
| Unit Type of Package 2 | S02 |
| Number of Units in Package 2 | 16 |
| Package 2 Height | 5.91 In (15.0 cm) |
| Package 2 Width | 11.81 In (30.0 cm) |
| Package 2 Length | 15.75 In (40.0 cm) |
| Package 2 Weight | 13.04 Lb(US) (5.915 kg) |
| Unit Type of Package 3 | P06 |
| Number of Units in Package 3 | 256 |
| Package 3 Height | 303.15 In (770.0 cm) |
| Package 3 Width | 23.62 In (60.0 cm) |
| Package 3 Length | 31.50 In (80.0 cm) |
| Package 3 Weight | 227.38 Lb(US) (103.14 kg) |

Offer Sustainability

| | |
|----------------------------|-----------------------------------------------------------------------------------------------------------------------------------------------------------------------------------------------------------------------------------------------------------|
| Sustainable offer status | Green Premium product |
| California proposition 65 | WARNING: This product can expose you to chemicals including: Antimony oxide & Antimony trioxide, which is known to the State of California to cause cancer. For more information go to www.P65Warnings.ca.gov |
| REACH Regulation | REACH Declaration |
| REACH free of SVHC | Yes |
| EU RoHS Directive | Compliant EU RoHS Declaration |
| Toxic heavy metal free | Yes |
| Mercury free | Yes |
| China RoHS Regulation | China RoHS Declaration |
| RoHS exemption information | Yes |
| Environmental Disclosure | Product Environmental Profile |
| Circularity Profile | End Of Life Information |

Product Life Status : **Commercialised**