

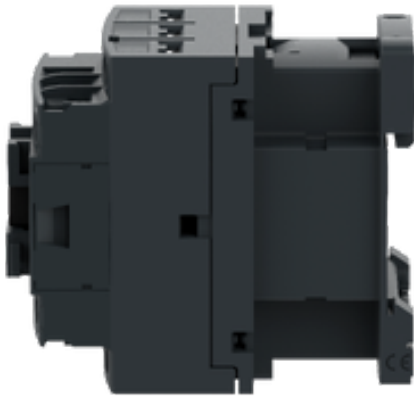
DPE12B7

IEC contactor, Easy TeSys
DPE, nonreversing, 12A, 3P, 5HP at 480V AC, 24V
50/60Hz coil



Product availability: Stock - Normally stocked in distribution facility

Price*: 32.50 USD



Main

Range	Easy TeSys
Product name	Easy TeSys DPE
Product or Component Type	Contacteur
Device short name	DPE
Contacteur application	Resistive load Motor control
Utilisation category	AC-4 AC-1 AC-3
Poles description	3P
Pole contact composition	3 NO
Auxiliary contact composition	1 NO
[Ie] rated operational current	12 A (at <140 °F (60 °C)) at <= 440 V AC AC-3 for power circuit 25 A (at <140 °F (60 °C)) at <= 440 V AC AC-1 for power circuit
[Uc] control circuit voltage	24 V AC 50/60 Hz
Motor power kW	3 KW 220...230 V AC 50/60 Hz 5.5 KW 380...400 V AC 50/60 Hz 5.5 KW 415 V AC 50/60 Hz 5.5 KW 440 V AC 50/60 Hz 7.5 KW 500 V AC 50/60 Hz 7.5 KW 660...690 V AC 50/60 Hz
Maximum Horse Power Rating	0.33 Hp at 115 V AC 50/60 Hz for 1 phase motors 1 Hp at 230/240 V AC 50/60 Hz for 1 phase motors 2 Hp at 200/208 V AC 50/60 Hz for 3 phase motors 2 Hp at 230/240 V AC 50/60 Hz for 3 phase motors 5 Hp at 460/480 V AC 50/60 Hz for 3 phase motors 7.5 Hp at 575/600 V AC 50/60 Hz for 3 phase motors

The information provided in this documentation contains general descriptions and/or technical characteristics of the performance of the products contained herein. This documentation is not intended as a substitute for and is not to be used for determining suitability or reliability of these products for specific user applications. It is the duty of any such user or integrator to perform the appropriate and complete risk analysis, evaluation and testing of the products with respect to the relevant specific application or use thereof. Neither Schneider Electric Industries SAS nor any of its affiliates or subsidiaries shall be responsible or liable for misuse of the information contained herein. *Prices are indicative

Complementary

[Ue] rated operational voltage	Power circuit \leq 690 V AC 25...400 Hz Power circuit \leq 300 V DC
[Ith] conventional free air thermal current	25 A (at 140 °F (60 °C)) for power circuit 10 A (at 140 °F (60 °C)) for signalling circuit
Irms rated making capacity	250 A at 440 V for power circuit conforming to IEC 60947 140 A AC for signalling circuit conforming to IEC 60947-5-1 250 A DC for signalling circuit conforming to IEC 60947-5-1
Rated breaking capacity	250 A at 440 V for power circuit conforming to IEC 60947
Associated fuse rating	10 A gG for signalling circuit conforming to IEC 60947-5-1 25 A gG at \leq 690 V coordination type 1 for power circuit 20 A gG at \leq 690 V coordination type 2 for power circuit
Average impedance	2.5 MOhm - Ith 25 A 50 Hz for power circuit
Power dissipation per pole	1.56 W AC-1 0.2 W AC-3
Electrical durability	0.6 Mcycles 25 A AC-1 \leq 440 V 1 Mcycles 12 A AC-3 \leq 440 V
Safety reliability level	B10d = 1369863 cycles contactor with nominal load EN/ISO 13849-1 B10d = 2000000 cycles contactor with mechanical load EN/ISO 13849-1
Control circuit type	AC 50/60 Hz
Coil technology	Without built-in suppressor module
Control circuit voltage limits	Drop-out: 0.3...0.6 U _c at 50/60 Hz (at \leq 158 °F (70 °C)) Operational: 0.8...1.1 U _c at 50 Hz (at \leq 140 °F (60 °C)) Operational: 0.85...1.1 U _c at 60 Hz (at \leq 140 °F (60 °C)) Operational: 1...1.1 U _c at 50/60 Hz (at \leq 158 °F (70 °C))
Inrush power in VA	70 VA 60 Hz cos phi 0.75 (at 68 °F (20 °C)) 70 VA 50 Hz cos phi 0.75 (at 68 °F (20 °C))
Hold-in power consumption in VA	7.5 VA 60 Hz cos phi 0.3 (at 68 °F (20 °C)) 7 VA 50 Hz cos phi 0.3 (at 68 °F (20 °C))
Heat dissipation	2...3 W 50/60 Hz
Operating time	12...22 ms closing 4...19 ms opening
Mechanical durability	10 Mcycles
Maximum operating rate	3600 Cyc/H 140 °F (60 °C)
Auxiliary contacts type	Mechanically linked 1 NO IEC 60947-5-1
Minimum switching current	5 MA for signalling circuit
Minimum switching voltage	17 V for signalling circuit
Insulation resistance	$>$ 10 MOhm for signalling circuit
Non-overlap time	1.5 Ms on de-energisation between NC and NO contact 1.5 Ms on energisation between NC and NO contact
Signalling circuit frequency	25...400 Hz

Connections - terminals	<p>Power circuit: screw clamp terminals 1 0.00...0.01 in² (1...4 mm²) - cable stiffness: flexible without cable end</p> <p>Power circuit: screw clamp terminals 2 0.00...0.01 in² (1...4 mm²) - cable stiffness: flexible without cable end</p> <p>Power circuit: screw clamp terminals 1 0.00...0.01 in² (1...4 mm²) - cable stiffness: flexible with cable end</p> <p>Power circuit: screw clamp terminals 2 0.00...0.00 in² (1...2.5 mm²) - cable stiffness: flexible with cable end</p> <p>Power circuit: screw clamp terminals 1 0.00...0.01 in² (1...4 mm²) - cable stiffness: solid without cable end</p> <p>Power circuit: screw clamp terminals 2 0.00...0.01 in² (1...4 mm²) - cable stiffness: solid without cable end</p> <p>Control circuit: screw clamp terminals 1 0.00...0.01 in² (1...4 mm²) - cable stiffness: flexible without cable end</p> <p>Control circuit: screw clamp terminals 2 0.00...0.01 in² (1...4 mm²) - cable stiffness: flexible without cable end</p> <p>Control circuit: screw clamp terminals 1 0.00...0.01 in² (1...4 mm²) - cable stiffness: flexible with cable end</p> <p>Control circuit: screw clamp terminals 2 0.00...0.00 in² (1...2.5 mm²) - cable stiffness: flexible with cable end</p> <p>Control circuit: screw clamp terminals 1 0.00...0.01 in² (1...4 mm²) - cable stiffness: solid without cable end</p> <p>Control circuit: screw clamp terminals 2 0.00...0.01 in² (1...4 mm²) - cable stiffness: solid without cable end</p>
Tightening torque	<p>Power circuit 15.05 lbf.in (1.7 N.m) screw clamp terminals flat Ø 6 mm</p> <p>Power circuit 15.05 lbf.in (1.7 N.m) screw clamp terminals Philips No 2</p> <p>Control circuit 15.05 lbf.in (1.7 N.m) screw clamp terminals flat Ø 6 mm</p> <p>Control circuit 15.05 lbf.in (1.7 N.m) screw clamp terminals Philips No 2</p>
Mounting Support	Rail Plate
Height	3.03 In (77 mm)
Width	1.77 In (45 mm)
Depth	3.39 In (86 mm)
Net Weight	0.71 Lb(US) (0.32 kg)

Environment

[Ui] rated insulation voltage	<p>Power circuit 690 V IEC 60947-4-1</p> <p>Power circuit 600 V CSA</p> <p>Power circuit 600 V UL</p> <p>Signalling circuit 690 V IEC 60947-1</p> <p>Signalling circuit 600 V CSA</p> <p>Signalling circuit 600 V UL</p>
Overvoltage category	III
Pollution degree	3
[Uimp] rated impulse withstand voltage	6 KV IEC 60947
Standards	<p>CSA C22.2 No 14</p> <p>EN 60947-4-1</p> <p>EN 60947-5-1</p> <p>IEC 60947-4-1</p> <p>IEC 60947-5-1</p> <p>UL 60947-4-1</p>
Product Certifications	UL[RETURN]CSA
IP degree of protection	IP20 front face IEC 60529
Ambient Air Temperature for Storage	-76...176 °F (-60...80 °C)
Ambient Air Temperature for Operation	-40...140 °F (-40...60 °C)
Operating altitude	0...6561.68 ft (0...2000 m)
Fire resistance	1562 °F (850 °C) IEC 60695-2-1
Mechanical robustness	<p>Vibrations contactor open 2 Gn, 5...300 Hz)</p> <p>Vibrations contactor closed 4 Gn, 5...300 Hz)</p> <p>Shocks contactor open 10 Gn for 11 ms)</p> <p>Shocks contactor closed 15 Gn for 11 ms)</p>

Ordering and shipping details

Category	US1011322362
Discount Schedule	0113
GTIN	3389111001180
Returnability	No
Country of origin	ID

Packing Units

Unit Type of Package 1	PCE
Number of Units in Package 1	1
Package 1 Height	2.20 In (5.590 cm)
Package 1 Width	3.80 In (9.650 cm)
Package 1 Length	4.70 In (11.940 cm)
Package 1 Weight	12.70 Oz (360.000 g)
Unit Type of Package 2	S02
Number of Units in Package 2	30
Package 2 Height	5.91 In (15.000 cm)
Package 2 Width	11.81 In (30.000 cm)
Package 2 Length	15.75 In (40.000 cm)
Package 2 Weight	24.38 Lb(US) (11.060 kg)
Unit Type of Package 3	P06
Number of Units in Package 3	480
Package 3 Height	29.53 In (75.000 cm)
Package 3 Width	31.50 In (80.000 cm)
Package 3 Length	23.62 In (60.000 cm)
Package 3 Weight	407.77 Lb(US) (184.960 kg)

Offer Sustainability

Sustainable offer status	Green Premium product
California proposition 65	WARNING: This product can expose you to chemicals including: Antimony oxide & Antimony trioxide, which is known to the State of California to cause cancer. For more information go to www.P65Warnings.ca.gov
REACH Regulation	REACH Declaration
REACH free of SVHC	Yes
EU RoHS Directive	Compliant EU RoHS Declaration
Toxic heavy metal free	Yes
Mercury free	Yes
China RoHS Regulation	China RoHS Declaration
RoHS exemption information	Yes
Environmental Disclosure	Product Environmental Profile
Circularity Profile	End Of Life Information
PVC free	Yes

Product Life Status : **Commercialised**