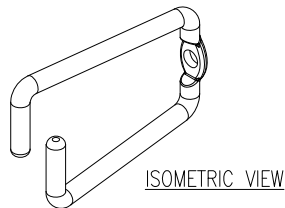
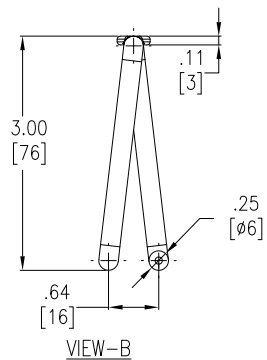
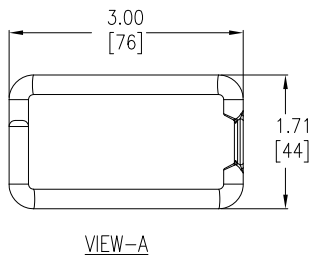
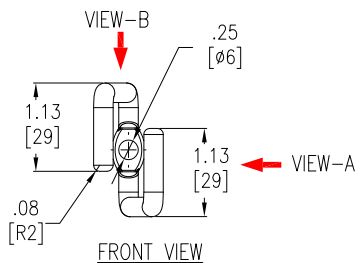
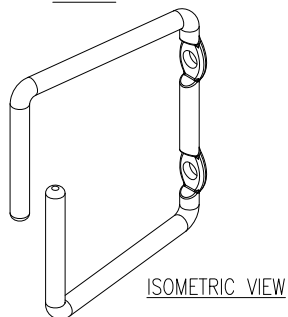
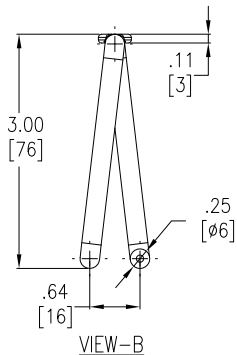
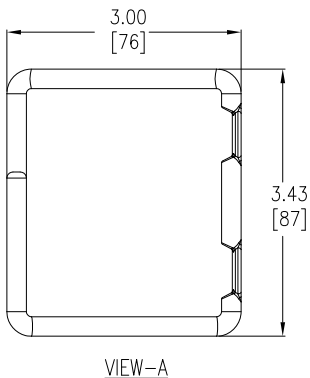
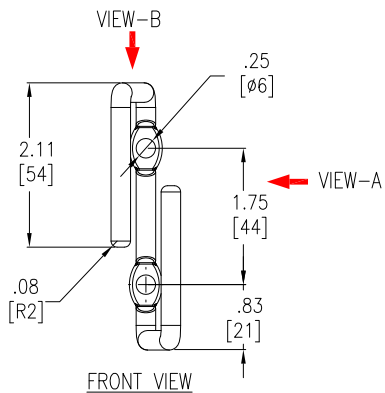


SKU DETAILS

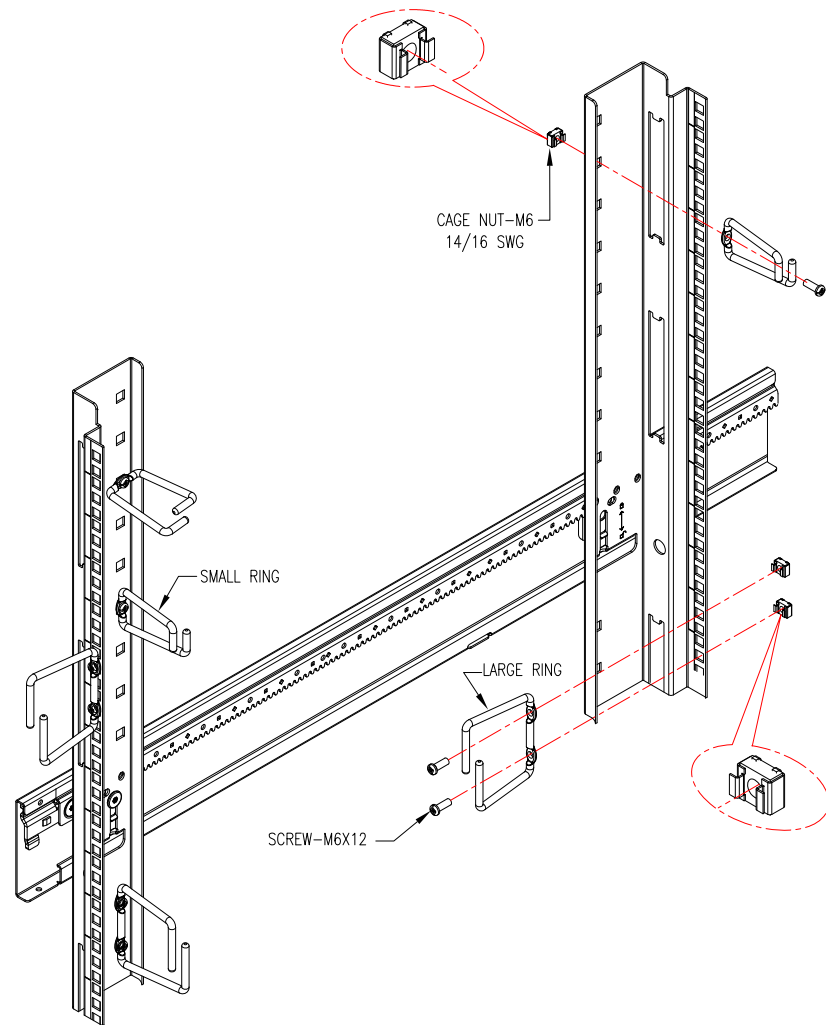
SMALL RINGS(1U)



LARGE RINGS(2U)



APPLICATION DETAILS (5 UNITS EACH PER SKU)



TYPICAL INSTALLATION DETAILS (EXPLODED VIEW)

NOTES:

1. INSTALLATION SHALL COMPLY WITH ALL APPLICABLE NATIONAL AND LOCAL CODES.
2. SEE PRODUCT DOCUMENTATION FOR FURTHER INFORMATION.
3. UNLESS OTHERWISE SPECIFIED, ALL DIMENSIONS ARE IN INCHES [MILLIMETERS].
4. WEIGHT OF UNIT IS 3.1 LBS [1.41 kg].
5. EACH LARGE RING INCLUDES (2) M6 SCREWS & (2) CAGE NUTS; EACH SMALL RING INCLUDES (1) M6 SCREW & (1) CAGE NUT.

THIS DRAWING AND SPECIFICATIONS HEREIN ARE THE PROPERTY OF SCHNEIDER ELECTRIC AND SHALL NOT BE COPIED, REPRODUCED OR USED IN WHOLE OR IN PART, AS THE BASIS FOR THE MANUFACTURE OR SALE OF ITEMS WITHOUT WRITTEN PERMISSION FROM SCHNEIDER ELECTRIC. THIS DRAWING IS BASED UPON LATEST AVAILABLE INFORMATION AND IS SUBJECT TO CHANGE WITHOUT NOTICE.

Schneider
Electric

TITLE:

CABLE MANAGEMENT RINGS
(5 LARGE & 5 SMALL RINGS)

PROJECT: STD SUBMITTAL DRAWINGS SHEET 1 OF 1

DWG NO:

AR8113A

DRAWN BY: BALAMURUGAN

03-JAN-08

ENGINEER: M UHRHAN/B OLIVER

03-JAN-08

APPROVED BY: SHERIDANE SIVAK LARSONS WASH

03-JAN-08

REV 0

PROJ
ANGLE
N/A