

**APC**<sup>®</sup>  
www.apc.com

## Biopod Quick Installation Guide

Part Number: 990-1705

This Quick Installation Guide is published in English. Additional languages are available on the software CD.  
For more information about using the APC OmniPass™ software, consult the online help.

Ce guide d'installation rapide est publié en anglais. Des versions en d'autres langues sont disponibles sur le CD du logiciel.  
Pour de plus amples informations sur l'utilisation du logiciel OmniPass™ d'APC, consultez l'aide en ligne.

Esta Guía de Instalación Rápida se publica en inglés. El CD del software contiene la Guía en otros idiomas.  
Si desea obtener más información sobre el uso del software APC OmniPass™, consulte la ayuda en línea.

Diese Kurzanleitung zur Installation ist in englischer Sprache abgefasst. Andere Sprachversionen finden Sie auf der Software-CD.  
Weitere Informationen zur Benutzung der APC-Software OmniPass™ finden Sie in der Online-Hilfe.

La presente Guida rapida all'installazione è pubblicata in inglese. Guide in altre lingue sono disponibili nel CD del software.  
Per ulteriori informazioni sull'uso del software OmniPass™ di APC, consultare la Guida in linea.

Deze Snelgids is in het Engels gepubliceerd. Andere talen zijn verkrijgbaar op de software-cd.  
Voor verdere informatie over het gebruik van de APC OmniPass™ software kunt u de online Help raadplegen.

このクイックインストールガイドは英語版でのみ発行されています。その他の言語バージョンはソフトウェアCDでご利用いただけます。  
APC OmniPass™ ソフトウェアについての詳細情報はオンラインヘルプをご利用ください。

本“快速安装指南”以英文出版。软件光盘上还有其它语言的版本。  
欲得使用 APC OmniPass™ 软件的更多信息，请参考在线帮助。

本「快速安装指南」以英文出版。軟體光碟上還有其他語言的版本。  
欲得使用 APC OmniPass™ 軟體的更多資訊，請參考在線幫助。

## INTRODUCTION

The APC Biopod (Figure 1) enables users to log on to a system simply by placing their fingertip on the Biopod sensor. Use the Biopod hardware and software to provide fingerprint identification to access password-protected systems, applications, and web sites, without password authorization.



Figure 1. The APC Biopod

**Caution:** Do not allow metal or sharp objects to come in contact with the sensor surface, as they could damage the unit.

## FEATURES

- Attached USB cable for easy connection to laptops and PCs
- Easy-to-use Master password for all types of Windows, application, and on-line passwords
- Compatible with Microsoft Passport<sup>®</sup>
- Support for Internet Explorer<sup>®</sup>
- Compatible with Windows XP<sup>®</sup> Credential Manager
- User-friendly graphical user interface (GUI) that is easy to install, customize and use
- Full Windows OS support including Windows 98<sup>®</sup>, ME<sup>®</sup>, 2000<sup>®</sup>, and XP<sup>®</sup> (Windows 95<sup>®</sup> is not supported)
- International language support
- TruePrint™ compliant

## SETUP

- 1 Connect the Biopod.

**Note:** Before connecting the Biopod, remove any previously installed biometric or related security software.

To connect the Biopod, plug the Biopod into the USB port as shown in Figure 2. You do not have to turn the computer off.

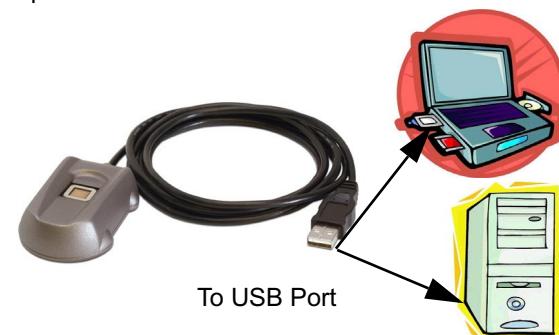


Figure 2. Connecting the Biopod

- 2 Install the driver.
  - A. Insert the software CD.
  - B. The **Found New Hardware Wizard** screen appears. Select **Next**, then select **Search for a Suitable Driver**, and select **Next**.
  - C. Check the **CD-ROM Drives** check box only, and select **Next**.
  - D. Once the driver is found, select **Next** to install it. The Hardware Wizard sends a message once installation is complete.

- 3 Install the APC OmniPass software.

If a previous version of the software is installed on the system, it must be removed before installing the APC OmniPass software.

- A. Insert the APC OmniPass software CD into the CD-ROM drive and follow the on-screen installation instructions.
- B. Specify a path name for the location of software when prompted.
- C. Restart the system when prompted. An **APC OmniPass** icon appears on the Windows Control Panel, the Windows Start menu, and in the task bar.

- 4 Select the **Enroll Wizard** to add fingerprints to the database. The Enroll Wizard initial screen appears (Figure 3).

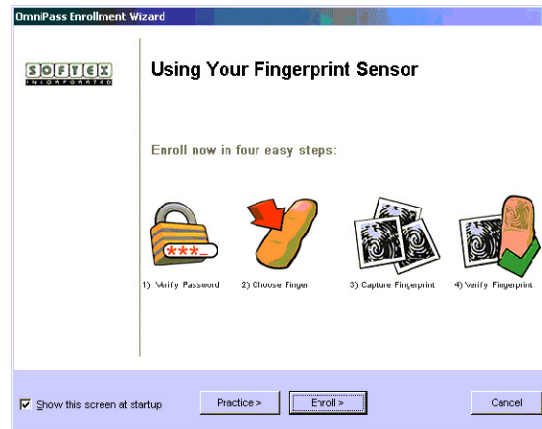


Figure 3. The Enroll Wizard Initial Screen

- 5 Select the **Enroll** button. The **Verify Password** screen (Figure 4) appears.



Figure 4. The Verify Password Screen

- 6 On some systems, the current Windows user name is filled in. (Windows 98/ME users must type the user name.) If a user does not have a Windows user name, one is created during this process.

Enter the Windows password in the **Password** field. This is the same password that is used to log into Windows. Select **Next** to continue or **Cancel** to exit.

The **Choose a Finger** screen (Figure 5) appears. Select a finger to enroll by highlighting and selecting the finger. A green check mark indicates that a particular finger has already been enrolled.

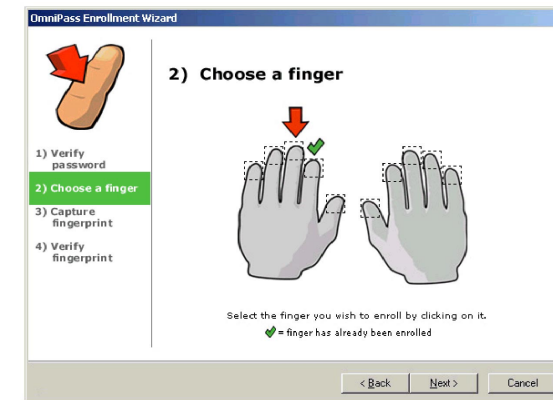


Figure 5. The Choose a Finger Screen

- 7 Place the finger on the Biopod for scanning. Use light, but firm and steady pressure. Make sure that the finger makes contact with the Biopod sensor and the surrounding drive ring (Figure 6). APC OmniPass works best when it has an image of the center of a fingerprint (core image).

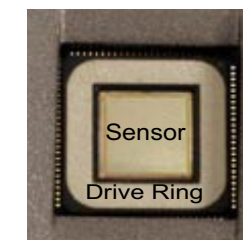


Figure 6. The Biopod Sensor and Drive Ring

Capture the full area of the fingerprint by placing the finger flat on the Biopod, as shown in Figure 7. Do not place only the fingertip on the sensor, as it contains insufficient image data for a high-quality fingerprint.



Figure 7. Proper Finger Placement

From the **Choose a Finger** screen, select **Next**. The **Capture Fingerprint** screen appears (Figure 8).

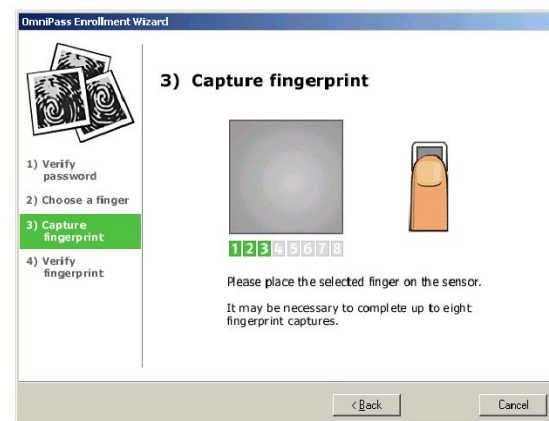


Figure 8. The Capture Fingerprint Screen

Keep the finger on the sensor and hold it down until the flashing green box below the fingerprint display is a solid green. Lift the finger and replace it on the sensor. Repeat this procedure until a message appears indicating that the enrollment process is complete. For improved performance, place the finger in slightly different locations on the sensor for each of the enrollment placements to allow the software to create a composite image of the finger.

**Do not** roll the finger as when taking an ink and paper image. Keep the finger flat and motionless against the sensor during the imaging process. After completing the required number of captures, the **Verify Fingerprint** screen appears (Figure 9).

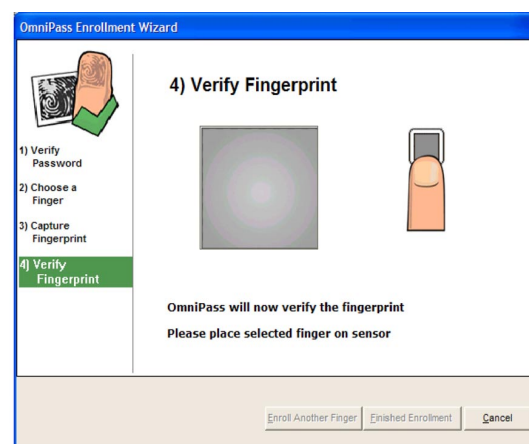


Figure 9. The Verify Fingerprint Screen

Place the finger on the sensor again. A message appears indicating whether the fingerprint enrollment was successful. Users may need to place their finger on the sensor several times to determine if enrollment was successful.

If enrollment was successful, select **Enroll Another Finger** to add additional fingerprints to the APC OmniPass database. If enrollment was not successful, repeat the enrollment process as needed.

Once enrollment is completed, select **Finished Enrollment**, then select **Done** on the Registration screen. Log in to APC OmniPass to use the software.

## LOGGING ON WITH THE BIPOD

When a user logs on with the Biopod installed, a fingerprint window is displayed with the **Login User** dialog box (Figure 10).

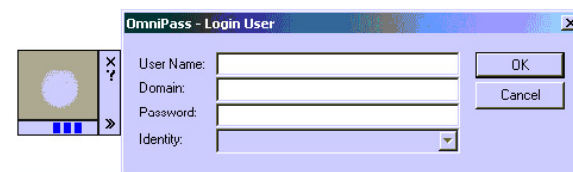


Figure 10. Login User Dialog Box with Fingerprint Window

If a fingerprint has been enrolled for a user, he or she can log into APC OmniPass by placing a finger on the Biopod device. The scrolling blue boxes indicate that APC OmniPass is waiting for a fingerprint device to be pressed.

Once a finger is placed on the device, the fingerprint is displayed in the window, and appears in green if recognized, or red if not recognized.

**Note:** It may take a few tries to get the software to recognize a fingerprint.

## SCREENSAVER PASSWORD

If the Biopod is installed on a system that uses a screensaver password, use a fingerprint to log back into Windows after the screensaver starts. APC OmniPass adds a fingerprint box to the screensaver password dialog box if it detects a fingerprint sensor. Place the appropriate finger on the sensor to log back in.

## WINDOWS 98/ME CONFIGURATION

In Windows 98/ME, APC OmniPass replaces the login screen to make the operating system more secure. To take advantage of this feature, do the following:

- ① From the Windows Start menu, select **Start>Settings>Control Panel**.
- ② Select the **APC OmniPass** control panel.
- ③ Select the **Enable Desktop Security** box.

Users should ensure that they know their password; otherwise, they will be unable to log into the computer.

When using a Windows 98/ME machine to log on to a network, users should make sure that their Windows password and user name are identical to their network password and user name.

To modify user information in Windows 98/ME:

- ① From the Windows Start menu, select **Start>Settings>Control Panel**.
- ② Select **Users**. From here, you can modify all user names and passwords.

## ENCRYPTING AND UNLOCKING FILES

To encrypt a file or folder:

- ① Browse to the file or folder, and right-click on it.
- ② From the drop-down menu, select **OmniPass Encrypt File(s)** and left-click the mouse.
- ③ Enter the user name and password/fingerprint scan when prompted to encrypt the file or folder.

If a folder containing multiple files is selected, a window appears with a list of the files in the folder and their encryption status. Select **OK** when the encryption is complete.

**Note:** Certain files and folders cannot be encrypted, such as those inside the Windows directory and the program files directory, and the folder where the APC OmniPass software is installed.

To unlock an encrypted file or folder:

- ① Browse to the file or folder, and right-click on it.
- ② From the drop-down menu, select **OmniPass Decrypt File(s)** and left-click the mouse.
- ③ Enter the user name and password/fingerprint scan when prompted to unlock the file or folder.

If a folder containing multiple files is selected, a window appears with a list of the files and their status. Select **OK** once all files are unlocked.

## CLEANING THE BIPOD SENSOR

To clean the Biopod sensor and drive ring:

- ① Disconnect the Biopod from the computer.
- ② Wet one end of a cotton swab with a water-based household cleaner such as Formula 409®, Windex®, or Fantastik®. **DO NOT** use chlorine-based cleaners such as bleach, or solvents such as acetone, paint thinner or turpentine.
- ③ Gently rub the sensor surface and the finger drive with the cotton swab. Do not allow any cleaner to drip into the electronics around the sensor.
- ④ After cleaning, gently rub the surface again with a dry cotton swab.

**Note:** Cleaning is not required on a regular basis. If material does accumulate, the normal wiping action of a finger is usually adequate to clean the sensor.

## TROUBLESHOOTING

If a customer replaces the Biopod with another APC Biopod and encounters problems while enrolling fingers, it may be necessary to recalibrate the new Biopod by running the ATDiag.exe utility on the software CD. For information on using this utility, consult the ATDiag.txt file on the software CD.

Windows 2000/XP users may experience a problem adding a Windows user to the APC OmniPass database. If this happens, adjust the local security settings:

- ① Log into Windows as an administrator.
- ② From the Windows Start menu, select **Start>Settings>Control Panels>Administrative Tools>Local Security Settings>Security Options**.
- ③ Select **Network Access: Sharing and Security Model for Local Accounts**. The setting should be **Classic - local users authenticate as themselves**.

If the fingerprint sensor does not work while logging into Windows XP, try changing the Windows user settings:

- ① From the Windows Start menu, select **Start>Settings>Control Panels>User Accounts**.
- ② Select **Change the way users log on or off**, and make sure that the settings for both the **Logon Screen** and **Fast User Switching** options are the same (enabled or disabled).

## WARRANTY

The standard warranty is two (2) years from the date of purchase. APC's standard procedure is to replace the original unit with a factory reconditioned unit. APC will ship the replacement unit once the defective unit has been received by the repair department, or cross-ship upon the receipt of a valid credit card number. The customer pays for shipping the unit to APC. APC pays ground freight transportation costs to ship the replacement unit to the customer.

## WARRANTY REGISTRATION

To register this product for purposes of the warranty, please go to [warranty.apc.com](http://warranty.apc.com).

## APC CONTACT INFORMATION

Technical Support	<a href="http://www.apc.com/support">www.apc.com/support</a>
Internet	<a href="http://www.apc.com">www.apc.com</a>
USA and Canada	800-800-4272