

# APC Notebook Pro Surge Protector

Thank you for selecting the APC Notebook Pro Surge Protector! Please complete and return the warranty card (also available at [www.apcc.com](http://www.apcc.com)).

## 1.0 Safety Precautions

Before beginning the installation, please read and understand the following safety precautions:

- This product is designed for use in countries with 100VAC, 120VAC or 230VAC electrical utilities. (Use in some countries may require a plug adapter)
- Telephone Surge Protection is not for use with ISDN or digital telephone lines.
- Do not install during a lightning storm! Install in a dry environment.
- Prior to installing the Notebook Pro Surge Protector, turn off and unplug all equipment to be protected.

## 2.0 Installation

Confirm that the notebook power and the telephone dial tone are working prior to installing the APC Notebook Pro Surge Protector.

### AC Line Installation (Figure 1)

1. Turn off and unplug the equipment to be protected.
2. Unplug the power cord from the end of the power adapter and plug it into the end of the Notebook Pro Surge Protector. Plug the cable end of the Notebook Pro Surge Protector into the power adapter.

### Excess Current Detection (associated with digital line) (Figure 2)

1. Disconnect the telephone cable from the wall and plug it into the Notebook Pro Surge Protector jack marked with the ☎ icon.
2. Plug one end of the supplied telephone cable into the wall telephone jack and plug the other end into the Notebook Pro Surge Protector jack marked with the -⊖ icon.
3. Press the Δ button (top of unit) to test for an excess current condition (often associated with digital line). If the red indicator light illuminates, an excess current condition has been detected that may damage your modem or cause it to function improperly. Find a different telephone jack and retest.
4. If the red indicator light does NOT illuminate, the line is currently safe to use.

### Modem Installation (Figure 3)

1. To protect your modem, plug the modem cable into the Notebook Pro Surge Protector jack marked with the ☎ icon.

### Traveling with the unit

1. For your convenience, a strap has been supplied for mounting the Notebook Pro Surge Protector to your AC adapter or gathering/packing your cords.

## 3.0 Specifications

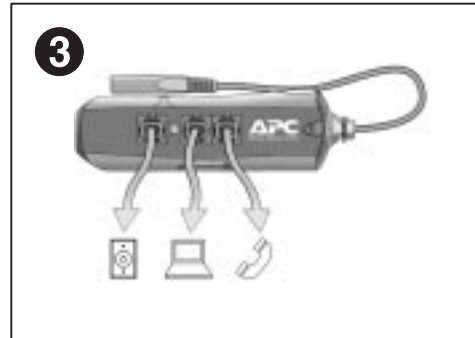
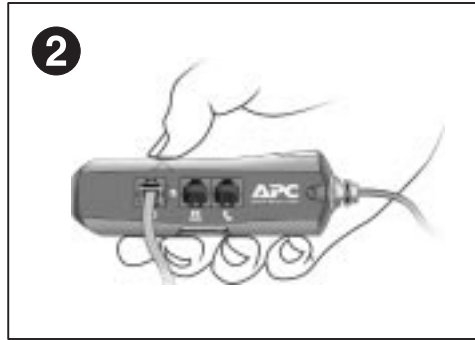
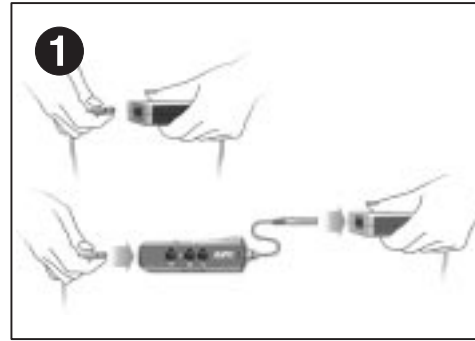
Operating Voltage/Current	100-240 Vac, 50/60 Hz; 2.5 A
Let-Thru Voltage ANSI/IEEE (62.41 Cat. A test)	100, 120 Vac: <5% 240 Vac: <15%
UL Suppressed Voltage Rating (L-N)	330V
Surge Energy Capacity	100, 120 Vac: 140J 240 Vac: 175J
Telephone Breakover Voltage	260V
Excess Current Protection Indicator	Indicates when current >140 mA
Surge Current (NM)	100, 120 Vac: 10 kA 240 Vac: 6 kA
Dimensions	4.88" x 1.5" x 1.2" (12.4cm x 3.8cm x 3.0cm)
Agency Approvals	UL, CSA, and FCC Part 68

## 4.0 Troubleshooting

Problem	Reason	Solution
No dial tone	product attached to a non-analog telephone line	check for excess current condition (Section 2.0) <b>Note:</b> Some digital PBX systems will not indicate excess current condition. Check with a known analog line.
	cables not installed correctly	check that both ends of cables are connected to correct jacks
	loose connection	check connections
Green indicator is not lit	no power to product	make sure product is plugged in and outlet has power
	product is damaged	contact APC for technical support (See product warranty on back)
Red indicator is lit	damaging excess current condition is detected	obtain an analog line and test again

### Limited Product Warranty

American Power Conversion offers a 5 year limited product warranty (worldwide) and a lifetime product warranty (US and Canada only) on the APC Notebook Pro Surge Protector. APC warrants its products to be free from defects in materials and workmanship under normal use and service for the lifetime of the original purchaser. Its obligation under this warranty is limited to repairing or replacing, at its sole option, any such defective products. To obtain service under warranty you must obtain a Return Material Authorization (RMA) number from APC ([www.apcc.com](http://www.apcc.com) or 1-800-800-4APC) or an APC Service Center. The Notebook Pro Surge Protector must be returned with an RMA number, with transportation charges prepaid and it must be accompanied by a brief description of the problem and proof of date and place of purchase. This warranty applies only to the original purchaser.



# Limiteur de tension APC Notebook Pro

Nous vous remercions d'avoir choisi le Limiteur mobile de tension SurgeArrest d'APC. Veuillez remplir et retourner la carte de garantie (également disponible à l'adresse [www.apcc.com](http://www.apcc.com)).

## 1.0 Mesures de sécurité

Avant de commencer l'installation, veuillez lire et bien assimiler les mesures de sécurité suivantes :

- Ce produit est conçu pour une utilisation dans des pays disposant d'une alimentation secteur de 100 Vca, 120 Vca ou 230 Vca. (Dans certains pays, son utilisation peut requérir l'emploi d'un adaptateur de prise)
- La protection contre les surtensions téléphoniques est déconseillée pour les lignes téléphoniques RNIS ou numériques.
- N'effectuez pas l'installation en cas de foudre ! Installez l'appareil dans un environnement sec.
- Avant d'installer le Limiteur mobile de tension, éteignez et débranchez tous les équipements à protéger.

## 2.0 Installation

Veuillez vérifier l'alimentation de votre ordinateur portable et la tonalité de la ligne téléphonique avant d'installer le Limiteur mobile de tension d'APC.

### Installation de l'alimentation alternative (Figure 1)

1. Eteignez et débranchez l'équipement à protéger.
2. Débranchez le cordon d'alimentation de l'extrémité de l'adaptateur de tension et branchez-le sur l'extrémité du Limiteur mobile de tension. Branchez l'extrémité du câble du Limiteur mobile de tension dans l'adaptateur de tension.

### Détection des surintensités de courant (associées à une ligne numérique) (Figure 2)

1. Débranchez le câble téléphonique de la prise murale et branchez-le dans la prise du Limiteur mobile de tension portant l'icône ☎.
2. Branchez une extrémité du câble téléphonique fourni dans la prise téléphonique murale et branchez l'autre extrémité dans la prise du Limiteur mobile de tension portant l'icône -⊖.
3. Appuyez sur le bouton Δ (sur le dessus de l'unité) afin de détecter une éventuelle surintensité de courant (souvent associée à une ligne numérique). Si le témoin lumineux rouge s'allume, une surintensité de courant a été détectée et pourrait endommager votre modem ou provoquer son mauvais fonctionnement. Trouvez une autre prise téléphonique et procédez à nouveau au test.
4. Si le témoin lumineux rouge NE s'allume PAS, la ligne peut alors être utilisée en toute sécurité.

### Installation de la ligne téléphonique (Figure 3)

1. Afin de protéger votre modem, branchez le câble du modem dans la prise du Limiteur mobile de tension portant l'icône ☎.

### Vos déplacements avec le limiteur de tension

1. Pour votre confort, une bride de fixation est fournie afin de monter le Limiteur mobile de tension sur votre adaptateur CA ou de rassembler/liar vos différents cordons.

## 3.0 Spécifications :

Tension de régime	100-240 Vca, 50/60 Hz.
Variation de tension ANSI/IEEE (62.41 Cat. A test)	< 5 % sous 100 et 120 Vca et < 15 % sous 240 V ca
Valeur de tension en UL supprimée (L-N)	330 V
Limite de surtension	140 J sous 100 et 120 Vca et 175 J sous 240 Vca
Téléphone : tension de rupture	260 Vcc
Témoin de protection pour surintensité de courant	Signale courant > 140 mA
Surintensité crête (NM) (@ 8 x 20 ms)	10 kA (100, 120 Vca) et 6 kA (240 Vca)
Dimensions	12,4 cm x 3,8 cm x 3,0 cm (4,88" x 1,5" x 1,2")
Agréments/Homologations	UL, CSA et FCC partie 68

## 4.0 Analyse des pannes :

Problème	Raison	Solution
Absence de tonalité	appareil relié à une ligne téléphonique non analogique	recherchez une éventuelle surintensité de courant (section 2.0). Remarque : certains PBX numériques n'indiqueront pas de surintensité de courant. Effectuez une vérification avec une ligne analogique connue.
	câbles incorrectement installés	vérifiez que les deux extrémités des câbles sont connectées aux prises correctes
	connexion desserrée	vérifiez les connexions
Témoin lumineux vert éteint	absence d'alimentation électrique	assurez-vous que l'appareil est bien branché à une prise alimentée.
	appareil endommagé	appelez le service d'assistance technique APC (Consultez la garantie du produit au verso).
Témoin lumineux rouge allumé	surintensité préjudiciable de courant détectée	trouvez une ligne analogique et effectuez à nouveau le test.

### Garantie produit limitée :

American Power Conversion offre une garantie produit limitée à 5 ans (dans le monde entier) et une garantie produit à vie (pour les États-Unis et le Canada uniquement) sur le Limiteur mobile de tension SurgeArrest d'APC. APC garantit son produit contre tout défaut matériel ou de fabrication, dans des conditions normales d'utilisation et de service, pendant toute la durée de vie de l'acquéreur d'origine. En vertu de cette garantie, ses obligations se limitent à la réparation ou au remplacement, effectués à sa discrétion exclusive, de tout produit défectueux. Pour bénéficier des services de la garantie, vous devez obtenir un numéro d'autorisation de retour de matériel (ARM) auprès d'APC ou d'un centre de réparation APC. Le Limiteur mobile de tension doit être retourné avec un numéro d'ARM, en port payé et accompagné d'une brève description du problème ainsi que d'un justificatif de la date et du lieu d'achat. Cette garantie s'applique uniquement à l'acquéreur d'origine.

# Protector contra sobretensiones APC Notebook Pro

Gracias por escoger el dispositivo protector de sobretensión móvil de APC. Sea tan amable de rellenar y enviar la tarjeta de garantía (disponible también en [www.apcc.com](http://www.apcc.com)).

## 1.0 Medidas de seguridad

Antes de iniciar la instalación, lea detenidamente las medidas de seguridad que se exponen a continuación:

- Este producto ha sido diseñado para ser utilizado en países con una potencia eléctrica de 100VCA, 120VCA ó 230VCA. En el caso de algunos países, es posible que sea necesario el uso de un adaptador eléctrico.
- La protección contra las sobretensiones no debe utilizarse en líneas telefónicas RDSI o líneas digitales.
- En ningún momento deberá efectuar la instalación durante una tormenta. La instalación debe realizarse en un entorno seco.
- Antes de instalar el dispositivo protector de sobretensión móvil, apague y desenchufe todo el material que requiera una protección especial.




## 2.0 Instalación

Antes de efectuar la instalación del dispositivo protector de sobretensión móvil de APC, compruebe que tanto el equipo portátil como la línea telefónica funcionan correctamente.


### Instalación de la línea de CA (Figura 1)

- Apague y desenchufe el material que requiera protección.
- Desenchufe el cable eléctrico del extremo del adaptador eléctrico y enchúfelo en el extremo del dispositivo protector de sobretensión móvil. Enchufe el extremo del cable del dispositivo protector de sobretensión móvil en el adaptador eléctrico.

### Detección de intensidad excesiva de corriente (asociada a líneas digitales) (Figura 2)

- Desconecte el cable telefónico de la pared y conéctelo en el enchufe de toma de corriente del dispositivo protector de sobretensión móvil identificado con el icono .
- Enchufe un extremo del cable telefónico provisto en el enchufe de toma de corriente telefónica de la pared y el otro extremo en el enchufe de toma de corriente telefónica del dispositivo protector de sobretensión móvil identificado con el icono .
- Presione el botón  (parte superior de la unidad) para comprobar si existe una intensidad excesiva de corriente (con frecuencia asociada a las líneas digitales). La iluminación de un indicador rojo, implica la presencia de un exceso de corriente que puede dañar el módem o provocar un funcionamiento incorrecto del mismo. Conecte otro enchufe de toma de corriente telefónica y vuelva a intentarlo.
- Si el indicador de color rojo NO se enciende, puede utilizar la línea con toda seguridad.

### Instalación telefónica (Figura 3)

- Para proteger su módem, enchufe el cable del módem en el enchufe de toma de corriente del dispositivo protector de sobretensión móvil identificado con el icono .

### Transporte de la unidad

- Para su comodidad, se incluye una banda que permite montar el dispositivo protector de sobretensión móvil en el adaptador de CA o agrupar y embalar los cables.

## 3.0 Especificaciones:

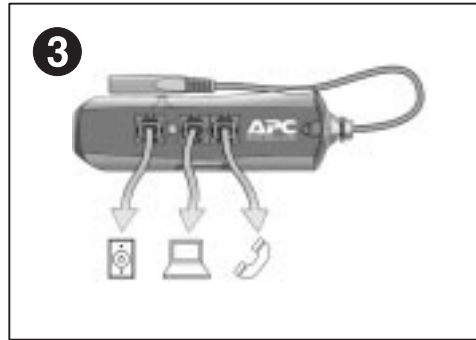
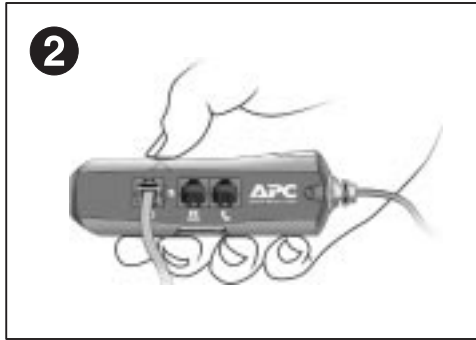
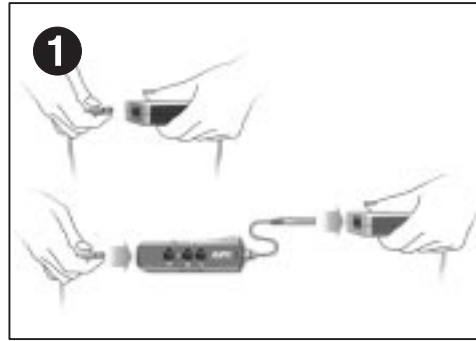
Tensión (Voltaje)	100-240 Vca, 50/60 Hz.
Voltaje "Let-Thru"	<5% a 100, 120 Vca y
ANSI/IEEE (62,41 Cat. A test)	<15% a 240 Vca
Valor de tensión UL suprimido (L-N)	330V
Capacidad de potencia de sobretensión	140J a 100, 120 Vca y 175J a 240 Vca
Tensión de irrupción telefónica	260Vdc
Indicador de protección de exceso de corriente	Se activa si la corriente es >140 mA
Cresta de sobrecorriente (NM) (@ 8x20ms)	10 kA (100, 120 Vca) y 6 kA (240 Vca)
Tamaño	4,88" x 1,5" x 1,2" (12,4cm x 3,8cm x 3,0cm)
Certificaciones	UL, CSA, y FCC Parte 68

## 4.0 Resolución de problemas:

Problema	Motivo	Solución
Sin tono de marcación	producto conectado a una línea telefónica no analógica	compruebe la presencia de exceso de corriente (Sección 2.0) Nota: algunos sistemas PBX digitales no indicarán la presencia de un exceso de corriente. Compruébela con una línea analógica conocida.
	cables incorrectamente instalados	compruebe que los extremos de ambos cables están conectados a los correspondientes enchufes de toma de corriente
	pérdida de conexión	compruebe las conexiones
El indicador verde no está iluminado	no llega corriente al producto	asegúrese de que el producto se encuentra conectado y de que llega corriente a la toma
	el producto está dañado	llame a APC para obtener soporte técnico (consulte la garantía del producto en el reverso)
El indicador rojo está iluminado	se ha detectado un estado de exceso de corriente	busque una línea analógica e inténtelo de nuevo

## Garantía limitada del producto:

American Power Conversion ofrece una garantía limitada de 5 años (a nivel internacional) y una garantía de por vida (sólo en EE.UU. y Canadá) para el dispositivo protector de sobretensión móvil de APC. APC garantiza la calidad de sus productos contra defectos de material y por mano de obra, en condiciones normales de uso y servicio durante toda la vida del primer usuario final. La obligación de esta garantía se limita, en caso de que sea necesario, a la reparación o sustitución de aquellos productos que se encuentren en estado defectuoso. Para beneficiarse de este servicio durante el período de duración de la garantía, debe obtener un número de autorización para la devolución de material denominado RMA de APC o de un centro de asistencia técnica de APC. El dispositivo protector de sobretensión móvil debe devolverse acompañado de un número RMA, habiendo pagado con anterioridad los gastos de transporte, e incluyendo una breve descripción del problema y el recibo de la fecha y el lugar de adquisición del mismo. Esta garantía se aplica únicamente al primer usuario final.



Entire contents copyright © 1998 American Power Conversion. All rights reserved; reproduction in whole or in part without permission is prohibited. Patents Pending

## APC Equipment Protection Policy

THIS POLICY IS NOT A WARRANTY. REFER TO THE APC LIMITED WARRANTY FOR INFORMATION CONCERNING THE WARRANTY FOR YOUR APC PRODUCT. THE LIMITATIONS AND CONDITIONS CONTAINED IN THIS POLICY DO NOT AFFECT THE TERMS OF THE WARRANTY.

### "Equipment Protection Policy"

In the USA and Canada Only for PNOTE Products

If your electronic equipment is damaged by power line transients on an AC power line while directly and properly connected to a standard APC product covered by the Equipment Protection Policy ("connected equipment"), and if all of the remaining conditions specified below are met, APC will, at APC's sole option, during the period specified below only, replace the APC product and either (a) pay for the repair of the connected equipment or (b) reimburse you for the fair market value, as determined by the then current price list of the Boston Computer Exchange (or equivalent), of the connected equipment, in an amount not to exceed the dollar limits stated below, if APC determines that the damage was caused by the failure of the APC product to protect against power line transients and/or where applicable, telephone line transients. Power line transients that APC products have been designed to protect against, as recognized by industry standards, include spikes and surges on AC power lines. Protection from telephone line transients applies only to APC products which offer modem or fax line protection, and in cases in which such protection is available, telephone service equipment must include a properly installed and operating "primary protection" device at the service entrance (such devices are normally added during telephone installation) in order to be covered for telephone line transients.

APC reserves the right to determine whether the damage to the connected equipment is due to APC product failure by requesting that damaged equipment be sent to APC for inspection. This policy is in excess of, and applies only to the extent necessary beyond, any coverage for the connected equipment provided by other sources, including, but not limited to, any manufacturer's warranty, and any extended warranty coverage.

### Equipment Protection Policy Dollar and Period Limits

For customers that meet the qualifications and conditions set forth in this policy, APC will provide reimbursement (cost of repair or fair market value) up to \$5,000. This policy is valid only while the product is owned by the original purchaser and is not transferable. The policy is in effect for five (5) years from the date of purchase.

### Eligibility for coverage under the Equipment Protection Policy:

- You must register the product by returning to APC the warranty card provided with the product within 10 days of purchase. All information must be filled in, and you should retain a copy for your records.
- All connected equipment must be UL or CSA approved.
- The APC product must be plugged into properly wired outlet; no extension cords, adapters, other ground wires, or electrical connections may be used, with the sole exception of other standard APC products. The installation must not include power protection products made by any manufacturer other than APC. The installation must comply with all applicable electrical and safety codes set forth pursuant to the National Electrical Code (NEC).
- Any claim under the Equipment Protection Policy must be made within 10 days of the date of alleged damage to the connected equipment.

### What is not covered under the Equipment Protection Policy:

- DAMAGE TO ELECTRONIC EQUIPMENT RESULTING FROM TRANSIENTS ON DATA LINES IS NOT COVERED. (SEE #3 BELOW)
- Restoration of lost data and reinstallation of software are not covered.
- This policy does not cover damage from a cause other than AC power line transients, except for damage due to telephone line transients.
- In addition, the following are expressly excluded from coverage:
  - DAMAGE CAUSED BY FAILURE TO PROVIDE A SUITABLE INSTALLATION ENVIRONMENT FOR THE PRODUCT.
  - Damage caused by the use of the APC product for purposes other than those for which it was designed.
  - Damage caused by accidents, or disasters such as fire, flood, or wind.
  - Damage caused by abuse, misuse, alteration, modification, or negligence.

- This policy is null and void if, in APC's view, the APC product has been tampered with or altered in any way.
- EXCEPT AS EXPRESSLY PROVIDED IN THIS POLICY, IN NO CASE SHALL APC BE LIABLE UNDER THE TERMS OF THIS POLICY FOR ANY DAMAGES WHATSOEVER, INCLUDING, BUT NOT LIMITED TO, DIRECT, INDIRECT, SPECIAL, INCIDENTAL, CONSEQUENTIAL, OR MULTIPLE DAMAGES ARISING OUT OF THE USE OF THE APC PRODUCT OR DAMAGE TO THE CONNECTED EQUIPMENT, REGARDLESS OF THE LEGAL THEORY ON WHICH SUCH CLAIM IS BASED, EVEN IF ADVISED OF THE POSSIBILITY OF SUCH DAMAGE. SUCH DAMAGES INCLUDE, BUT ARE NOT LIMITED TO, LOSS OF PROFITS, LOSS OF SAVINGS OR REVENUE, LOSS OF USE OF THE APC PRODUCT OR THE CONNECTED EQUIPMENT OR ANY ASSOCIATED EQUIPMENT, LOSS OF SOFTWARE, COST OF CAPITAL, COST OF ANY SUBSTITUTE EQUIPMENT, FACILITIES OR SERVICES, DOWNTIME, THE CLAIMS OF THIRD PARTIES, INCLUDING CUSTOMERS, AND INJURY TO PROPERTY.

### Submitting an Equipment Protection Policy Claim:

If all of the conditions for coverage are satisfied, call the APC customer service department at (800) 800-4APC and obtain an EPP RMA (Equipment Protection Policy Returned Material Authorization) number. APC will forward to you further instructions and an Equipment Protection Policy claim form, which must be completed and filed within 30 days.

## FCC ADDENDUM

This equipment contains an FCC compliant RJ-11 modular jack. It is designed to be connected to the telephone network or premises wiring using compatible modular plugs and cabling which comply with the requirements of FCC Part 68 rules.

The Ringer Equivalence Number (REN) is used to determine the number of devices which may be connected to the telephone line. An excessive REN may cause the equipment to not ring in response to an incoming call. In most areas, the sum of RENs of all equipment on a line should not exceed five (5.0).

In the unlikely event that this equipment causes harm to the telephone network, the telephone company can temporarily disconnect your service. The telephone company will try to warn you in advance of any such disconnection, but if advance notice isn't practical, it may disconnect the service first and notify you as soon as possible afterwards. In the event such a disconnection is deemed necessary, you will be advised of your right to file a complaint with the FCC.

From time to time, the telephone company may make changes in its facilities, equipment, or operations which could affect the operation of connected equipment. If this occurs, the telephone company is required to provide you with advance notice so you can make the modifications necessary to maintain uninterrupted service.

This product is not serviceable by the user.

## American Power Conversion

132 Fairgrounds Road  
West Kingston, Rhode Island 02892  
USA

Toll free: (800)800-4APC

Phone: (401)789-5735

Fax: (401)789-3710

Internet Address: <http://www.apcc.com>

AMERICAN POWER CONVERSION