

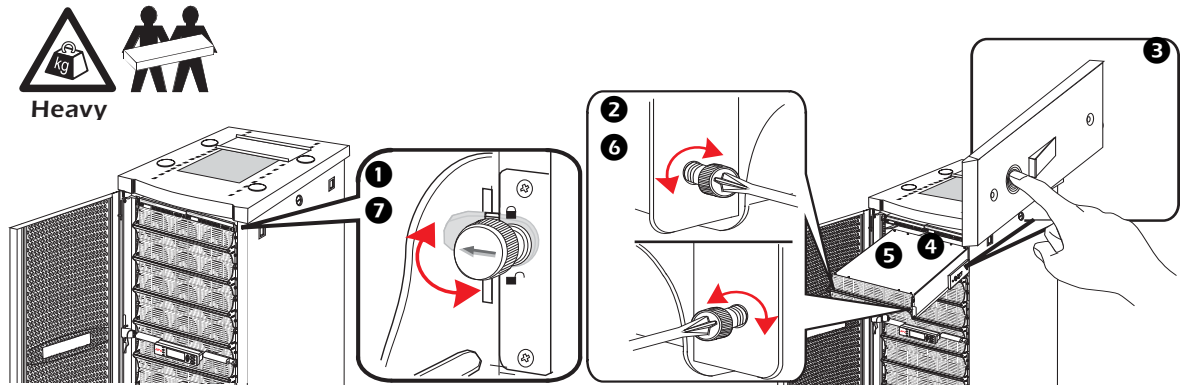
# Module and Card Replacement

## WARNING!



Only trained persons familiar with the construction and operation of the equipment, as well as the electrical and mechanical hazards involved, may install and remove system components.

## How to replace Power Modules



- 1 To de-activate the module, turn Locking Latch (with arrow pointing towards the module) counter-clockwise until it points downwards.
- 2 Unfasten spring-activated knobs on both sides of the module until they pop out. Standing on both sides of the UPS, 2 people can now pull the module almost free of the UPS (the lock mechanism prevents the module from being pulled clear of the UPS).
- 3 With the module still resting in the UPS, release the lock by pushing the black plastic tab on either side of the module.
- 4 2 people can now pull out the module. Display shows message saying that it has decreased the number of Power Modules.
- 5 2 people can now install the replacement Power Module. The lock on the side of the Power Module engages automatically.
- 6 Fasten spring-activated knobs on both sides of the Power Module.
- 7 Activate the Power Module by turning the Locking Latch clockwise until the arrow points towards the Power Module. Display shows message saying it has registered the new module.



Note

Power Module will not operate unless Locking Latch is engaged.