

Product data sheet

Characteristics

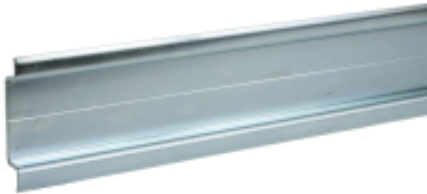
AM1DL201

Din rail - steel - length 2000 mm width 75 mm
height 15 mm



Product availability: Stock - Normally stocked in distribution facility

Price*: 27.40 USD



Main

Accessory / separate part category	Mounting accessories
Quantity per Set	Set of 6

Complementary

Depth	0.59 In (15 mm)
Length	78.74 In (2000 mm)
Material	Steel coated with zinc chromate
Product mounting	Omega rail
Net Weight	6.61 Lb(US) (3 kg)
Type of rail	Omega
Surface treatment	Zinc chromate
Thickness	0.08 In (2 mm)
Width	2.95 In (75 mm)

Ordering and shipping details

Category	US1000I22621
Discount Schedule	000I
GTIN	3389110567403
Returnability	Yes
Country of origin	MX

Packing Units

Unit Type of Package 1	PCE
Number of Units in Package 1	1
Package 1 Height	0.39 In (1.0 cm)
Package 1 Width	0.59 In (1.5 cm)
Package 1 Length	78.74 In (200.0 cm)
Package 1 Weight	6.53 Lb(US) (2.96 kg)

Unit Type of Package 2	PAL
Number of Units in Package 2	168
Package 2 Height	18.90 In (48.0 cm)
Package 2 Width	79.13 In (201.0 cm)
Package 2 Length	47.24 In (120.0 cm)
Package 2 Weight	1193.58 Lb(US) (541.4 kg)
Unit Type of Package 3	CAR
Number of Units in Package 3	6
Package 3 Height	78.94 In (200.5 cm)
Package 3 Width	3.54 In (9.0 cm)
Package 3 Length	2.17 In (5.5 cm)
Package 3 Weight	39.24 Lb(US) (17.8 kg)

Offer Sustainability

Sustainable offer status	Green Premium product
REACH Regulation	REACH Declaration
REACH free of SVHC	Yes
EU RoHS Directive	Pro-active compliance (Product out of EU RoHS legal scope) EU RoHS Declaration
Toxic heavy metal free	Yes
Mercury free	Yes
China RoHS Regulation	China RoHS Declaration
RoHS exemption information	Yes
Environmental Disclosure	Product Environmental Profile
Circularity Profile	No need of specific recycling operations

Contractual warranty

Warranty	18 months
----------	-----------

Product Life Status : **Commercialised**