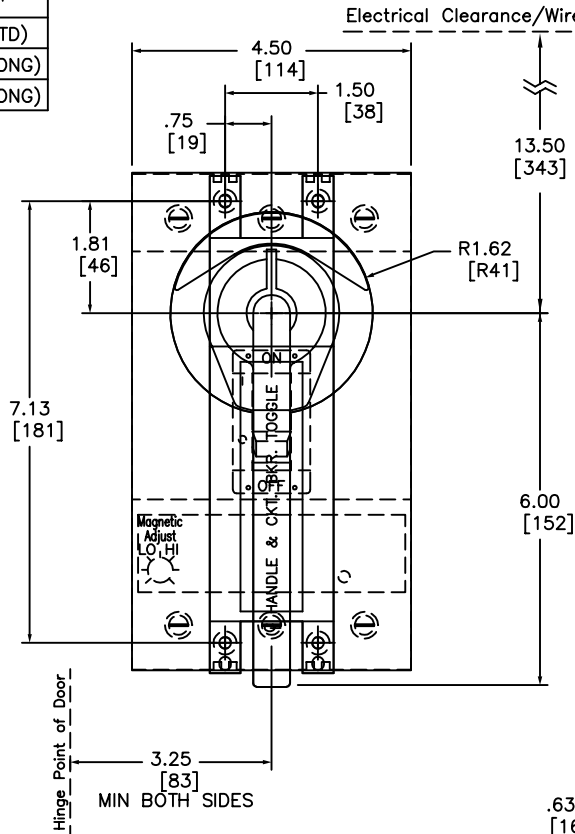
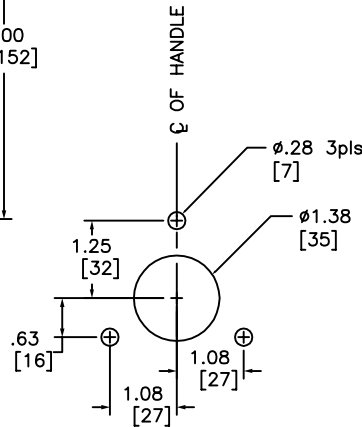
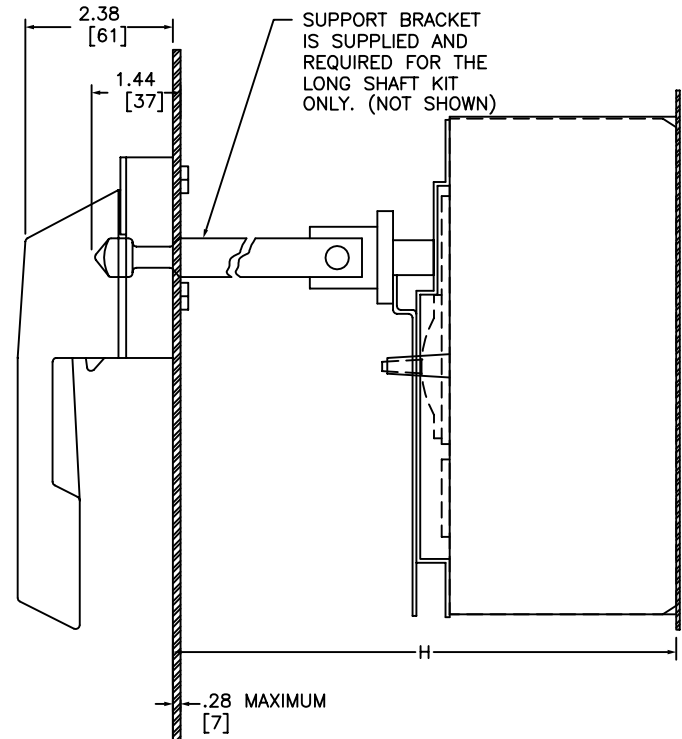


KIT	OPER. MECH.	HANDLE	SHAFT
LP1	LK1	LH6 (6")	LS8 (STD)
LP3	LK1	LF3 (3")	LS12 (LONG)
LP4	LK1	LF6 (6")	LS12 (LONG)



Minimum to wall or barrier to insure adequate wire bending space to lug surface when the maximum wire size is used with standard lugs. REF NEC 430-10



DOOR THICKNESS

H=Standard shaft		H=Long shaft	
MIN	MAX	MIN	MAX
6.25 [159]	11.19 [284]	6.25 [159]	21.75 [552]

SHAFT LENGTH FORMULA - L=H-3.63
MOUNTING DEPTH (H) - measured from the circuit breaker mounting surface to the outside of the enclosure door.

Catalog Number: 9421-LP
 Ratings: (9421-LK1 MECHANISM) for use with TYPE KAL, KCL, OR KHL CIRCUIT BREAKERS
 UL File/Guide: EG2922
 CSA File/Guide: -
 Meets Standards: -
 Weight: LK1-1.36 lbs/LP1-3.98 lbs/LP3-4.00 lbs/LP4-5.75 lbs
 Wire Size: -
 Terminal torque: -
 Mounting Hwd.: (4)-#10-24 screws

"THE SQUARE D COMPANY HAS PROPRIETARY RIGHTS TO THE INFORMATION CONTAINED HEREON. THIS INFORMATION REMAINS THE PROPERTY OF SQUARE D COMPANY AND MAY BE USED ONLY IN CONFORMANCE WITH INSTRUCTIONS ISSUED BY SQUARE D COMPANY. USER SHOULD VERIFY DRAWINGS ARE TO THE LATEST/CURRENT REVISION PRIOR TO INCORPORATING IN A DESIGN FILE."

DO NOT SCALE DRAWING
UNLESS OTHERWISE SPECIFIED DIMENSIONS ARE IN INCHES

THIRD ANGLE PROJECTION
TOLERANCES
UNLESS OTHERWISE SPECIFIED
2 PLACE DECIMALS ± .01

LK1 MECH. FOR TYPE KAL, KCL, OR KHL
CIRCUIT BREAKERS
CLASS 9421 TYPE LP

SQUARE D COMPANY

DWG# 9421 LP_OUTLINE_001
NO.