

| INTERIOR NO. | CATALOG NO. | SERIES NO. | AMPS | VOLTS | PH | WIRES | L |
|--------------|--------------|------------|------|-----------------------------------|----|-------|-------|
| 80103-831-50 | N008B4503-2 | E1 | 225 | 240 240 GRD. B PH. 20BY/120 | 1 | 2 | 37.75 |
| 80103-831-51 | N008B58424-2 | E1 | 225 | 240 240/120(DELTA) | 3 | 4 | 50.82 |

NAMEPLATE INFORMATION

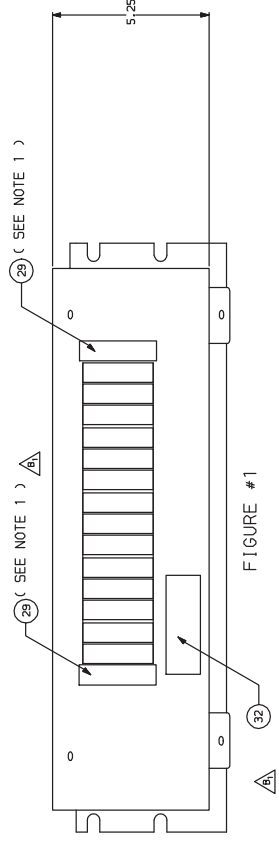
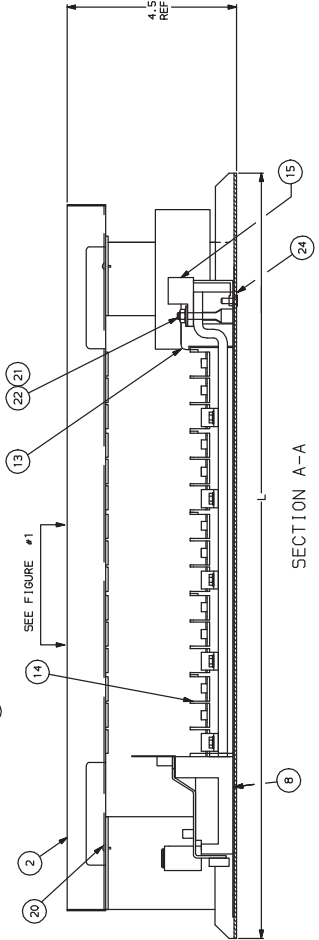
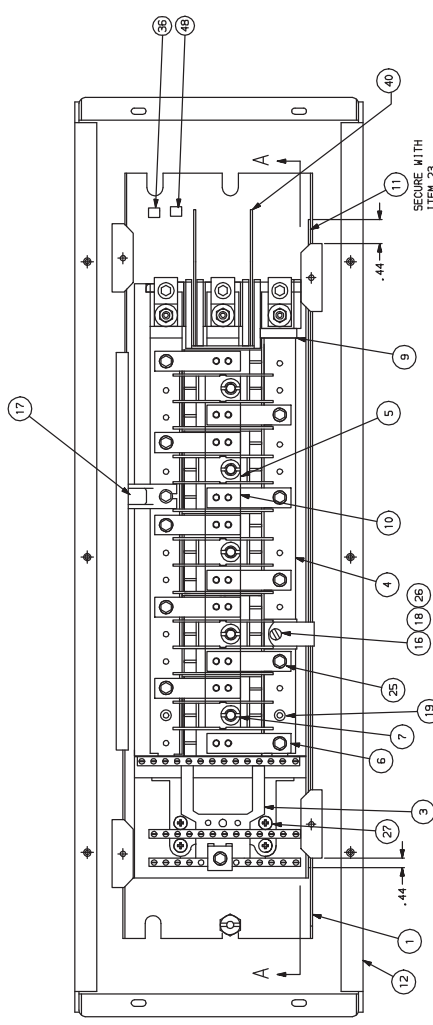
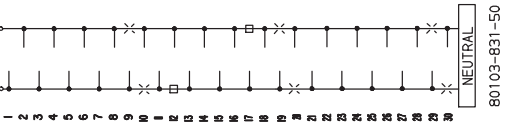
LOCATION DIAGRAMS

START BRANCH CIRCUIT CONNECTIONS
AT TOP MAIN END OF LEFT BUS BAR.

1 PHASE 3 WIRE
PROCEED IN A,C, SEQUENCE
AS SHOWN

3 PHASE 4 WIRE
PROCEED IN A,B,C, SEQUENCE
AS SHOWN

LINE



INSTALL (6) AT LOCATIONS MARKED (6) AT LOCATIONS MARKED (6) AT LOCATIONS MARKED (6) AT LOCATIONS MARKED (6) BEFORE ASSEMBLY.

INSTALL BUS CLAMPS AT LOCATIONS MARKED (6)

WARNING: (7) MUST CONTACT DIRECTLY ON (5). (10) MUST BE SPACED TO PREVENT SETTING BETWEEN (7) AND (6)

NOTE 1: DIVIDE INSULATION TIER 29 AT REGISTRATION AND INSTALL DIVIDE INSULATION TIER 29 AT REGISTRATION TOP OR BOTTOM FEED.

1. PLACE ITEMS 33, 47, 48 AND 51 LOOSE IN BOX.

| | | | |
|---|---------|---|-----|
| DESCRIPTION OF CURRENT REVISION CHANGES. | | TITLE: N008 COLUMN TYPE PANELBOARD ASSY | |
| B1 REMOVED BALLOONS 28 AND 47, ADDED ITEM 32 AND NOTES 1 AND 2. | | USED ON: 30, 42 CKT. 225A, H/L | |
| REV. | E.C.O. | DATE | BY |
| A | P020104 | B-28-02 | JLS |
| B | P030004 | 15/JAN/2003 | PLR |

| | | | |
|--|--|--|--|
| DISTRIBUTION | | E.C.O. # | |
| SWITCHBOARDS | | E990389 | |
| PANELBOARDS | | DRAWN BY: DEA | |
| E.C.O. # | | CHECKED: JLS | |
| LINEAR DIM. | | SCALE: NTS | |
| STANDARD TOLERANCE UNLESS OTHERWISE SPECIFIED. | | DATE: 5-17-99 | |
| HOLE DIAMETER | | DIMENSIONS ± 1' UNDIMENSIONED 90° ± 2' | |
| DIAMETER | | SCALE: NTS | |
| ANGLE | | DATE: 5-17-99 | |



80103-831-51