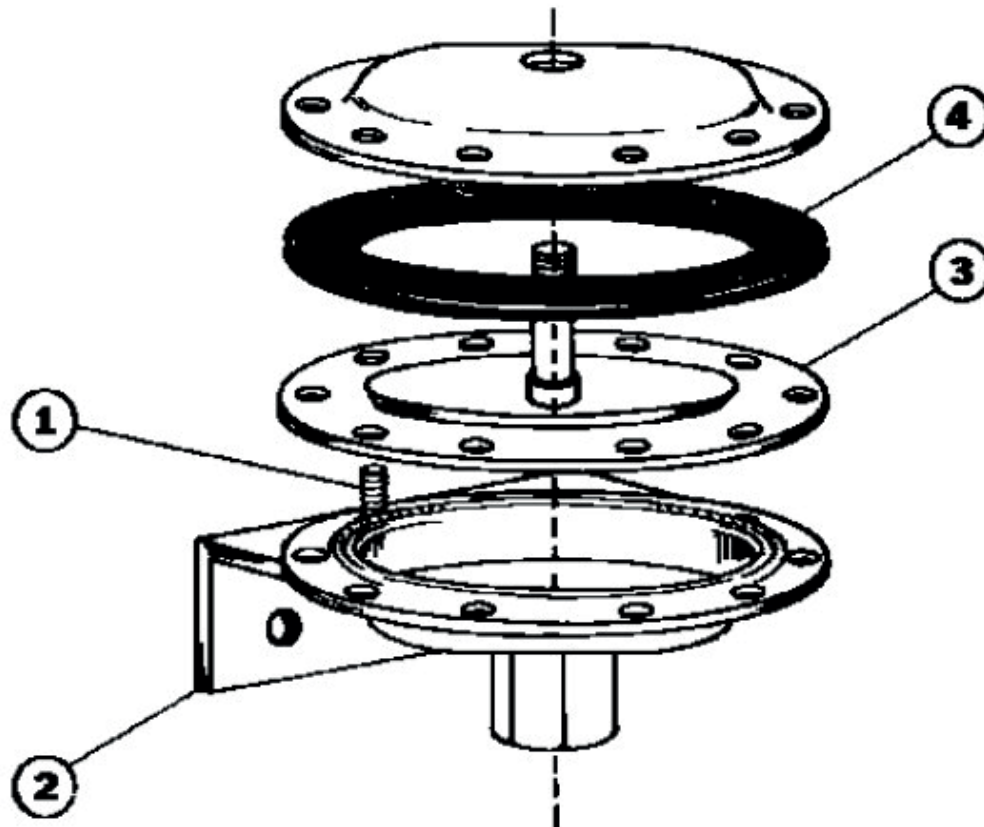




**CLASS 9998 TYPE PC 265
FOR CLASS 9998 TYPE PC 233, 295, 301, SEE REVERSE SIDE**



65080-176

1. Remove ten (10) mounting screws (1) from actuator module. If the device has a mounting bracket (2) four screws will be longer, these must be reinstalled in the same locations during step 4.
2. Remove and discard old diaphragm assembly (3), and gasket (4).
3. Assemble actuator with new gasket and diaphragm assembly as shown.
4. Reinstall ten (10) mounting screws (1) and tighten to 10-16 inch-pounds.

SQUARE D

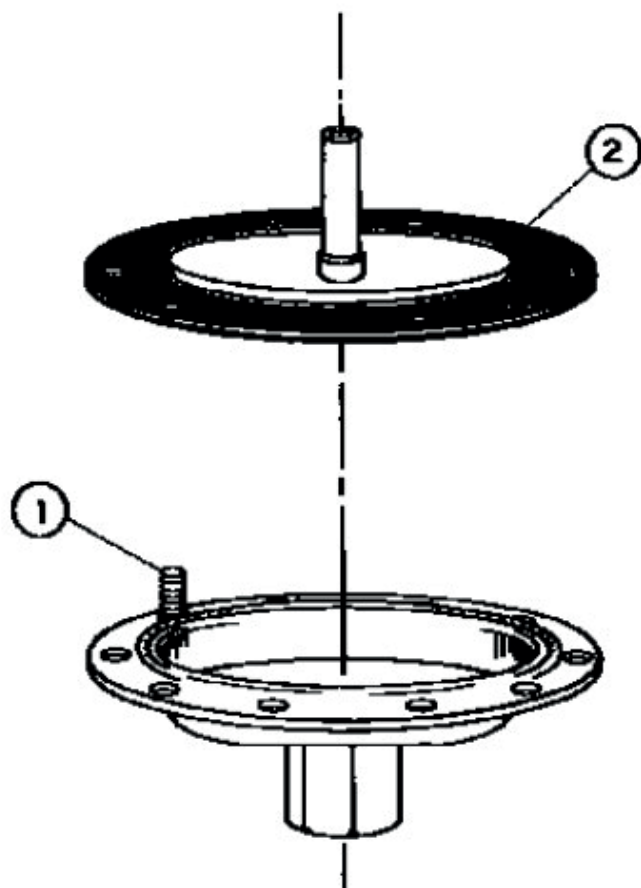


**CLASS 9998 TYPE PC 233, 295, 301,
FOR CLASS 9998 TYPE PC 265, SEE REVERSE SIDE**

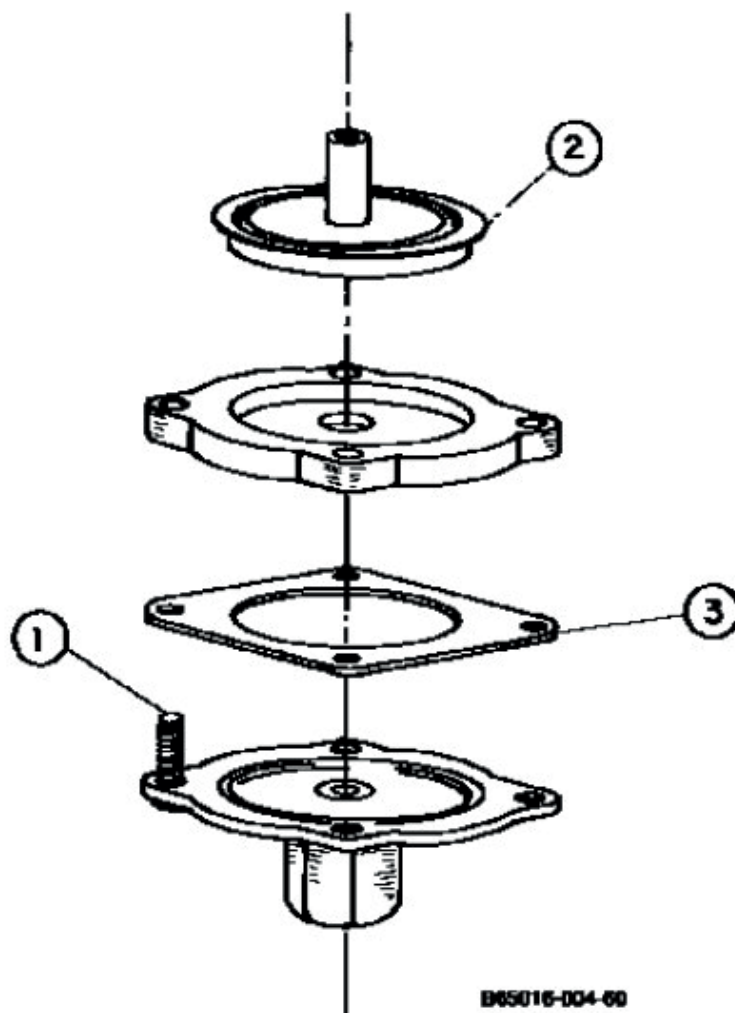
CLASS 9016

TYPE GAW 1,21

TYPE GAW 2,22



B65016-004-61



B65016-004-60

1. Remove flange mounting screws (1) from actuator module.
2. Remove old diaphragm assembly (2) by rotating counterclockwise, and discard old diaphragm assembly (2).
3. Assemble actuator module with new diaphragm assembly (2) as shown.
NOTE: Rotate assembly clockwise until it bottoms, then rotate counterclockwise approximately 1/2 turn.
4. Reinstall flange mounting screws (1) and tighten 8 to 10 inch-pounds.

SQUARE D