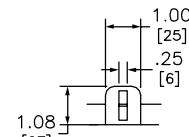
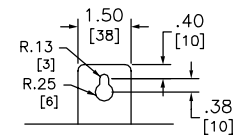


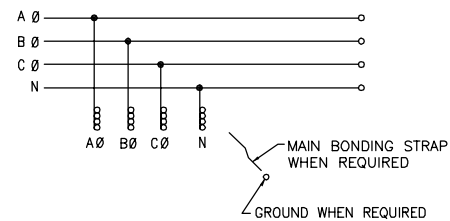
DETAIL A
BOTTOM
MOUNTING
BRACKET



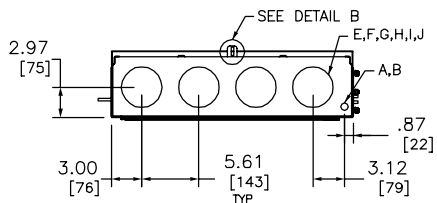
DETAIL B
COVER
SEALING
LATCH



DETAIL C
TOP
MOUNTING
BRACKET



SYMBOL	KNOCKOUTS	
	CONDUIT SIZE IN	MM
A	.50	13
B	.75	19
D	1.25	32
E	1.50	38
F	2.00	51
G	2.50	64
H	3.00	76
I	3.50	89
J	4.00	102



NOTE: TAP BOX SUPPLIED WITH ALL COPPER BUSSING AND ALUMINUM TERMINALS TO ACCEPT COPPER OR ALUMINUM WIRE.

DUAL DIMENSIONS: INCHES
MILLIMETERS

NOTES:
FINISH - GRAY BAKED ENAMEL POWDER COAT PAINT OVER CLEANED GALVANNEALED STEEL.
UL LISTED - FILE-10582, VOL. M, E131840, VOL. M.
SUITABLE FOR USE ON THE LINE SIDE OF SERVICE EQUIPMENT.
MAIN HORIZONTAL CROSS BUS RATED AT 1200 AMPERES.
MAIN DEVICES ARE SEALABLE BY UTILITY.
GANGABLE MULTI-METERING EQUIPMENT IS DESIGNED FOR WALL MOUNTING ONLY.
(NOT SUITABLE FOR FLOOR STANDING EQUIPMENT).
APPROVED FOR USE IN CONSOLIDATED EDISON SERVICE AREAS OF NEW YORK CITY AND WESTCHESTER.

SYSTEM TYPE	MAIN RATING (AMPERES)	CATALOG NUMBER *	LINE PHASE AND NEUTRAL LUG WIRE RANGE FOR AL OR CU CONDUCTORS (FACTORY INSTALLED)	GROUND LUG WIRE RANGE (FACTORY INSTALLED)
3Ø 4W 240 VAC	800	EZM3800TBCU	(4) 3/0 - 500	(1) #6-300

*SERIES M01

EZ METER-PAK GANGABLE
MULTI-METERING EQUIPMENT
800A 3PH 4W MAIN LUGS TERMINAL BOXES
OVERHEAD/UNDERGROUND FEED
RAINFOOF NEMA TYPE 3R ENCLOSURES



DWG# 3372
NO.