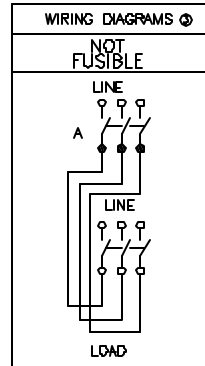


NEMA TYPES 3, 3R, 4, 4X, 5 OR 12



TERMINAL LUGS			
AMPERES	MAX WIRE	MIN WIRE	TYPE
60	#3 AWG	#12 AWG	AL
60	#3 AWG	#14 AWG	CJ
100	#1/D AWG	#12 AWG	AL
100	#1/D AWG	#14 AWG	CJ

DUAL DIMENSIONS: INCHES  
MILLIMETERS

CATALOG NUMBER	VOLTAGE RATING	AMPERE RATING	WIRING DIAG	120 VAC		240 VAC				CORNER GROUNDING DELTA SYSTEM		480 VAC				CORNER GROUNDING DELTA SYSTEM		600 VAC				125 VDC		250 VDC		600 VDC			
				1PH		1PH		3PH		1PH		3PH		1PH		3PH		1PH		3PH		1PH		3PH		1PH		3PH	
				STD	MAX	STD	MAX	STD	MAX	STD	MAX	STD	MAX	STD	MAX	STD	MAX	STD	MAX	STD	MAX	STD	MAX	STD	MAX	STD	MAX	STD	MAX
DTU362DS	600 VAC: 600VDC	60	A	NA	5	NA	10	NA	20	NA	15	NA	25	NA	50	NA	30	NA	30	NA	60	NA	5	NA	10	NA	30		
DTU363DS	600 VAC: 600VDC	100	A	NA	7.5	NA	20	NA	40	NA	40	NA	40	NA	75	NA	60	NA	40	NA	75	NA	7.5	NA	20	NA	50		

- NOTES:  
 1. LISTED-FILE E-2875  
 FINISH - NONE  
 SHORT CIRCUIT CURRENT RATING:  
 10,000 AMPERES WHEN USED IN CONJUNCTION WITH CLASS H OR K FUSES.  
 200,000 AMPERES WHEN USED IN CONJUNCTION WITH CLASS J, OR R FUSES.  
 FOR SINGLE PHASE HP RATINGS, USE 2 SWITCHING POLES.  
 FOR DC RATINGS, USE 2 SWITCHING POLES.  
 FIELD CONVERTIBLE TO FEED TWO ALTERNATE LOADS FROM A SINGLE SOURCE.  
 FOR CORNER GROUNDED DELTA SYSTEM, USE 2 SWITCHING POLES AND INSTALL NEUTRAL FOR GROUNDED CONDUCTOR.

DOUBLE THROW SAFETY SWITCHES  
 VISIBLE BLADES  
 60-100 AMPERE-SERIES F6  
 ENCLOSURE - TYPE 3, 3R, 4, 4X, 5 OR 12 STAINLESS STEEL  
 NOT FUSIBLE



DWG# 3196  
 NO.