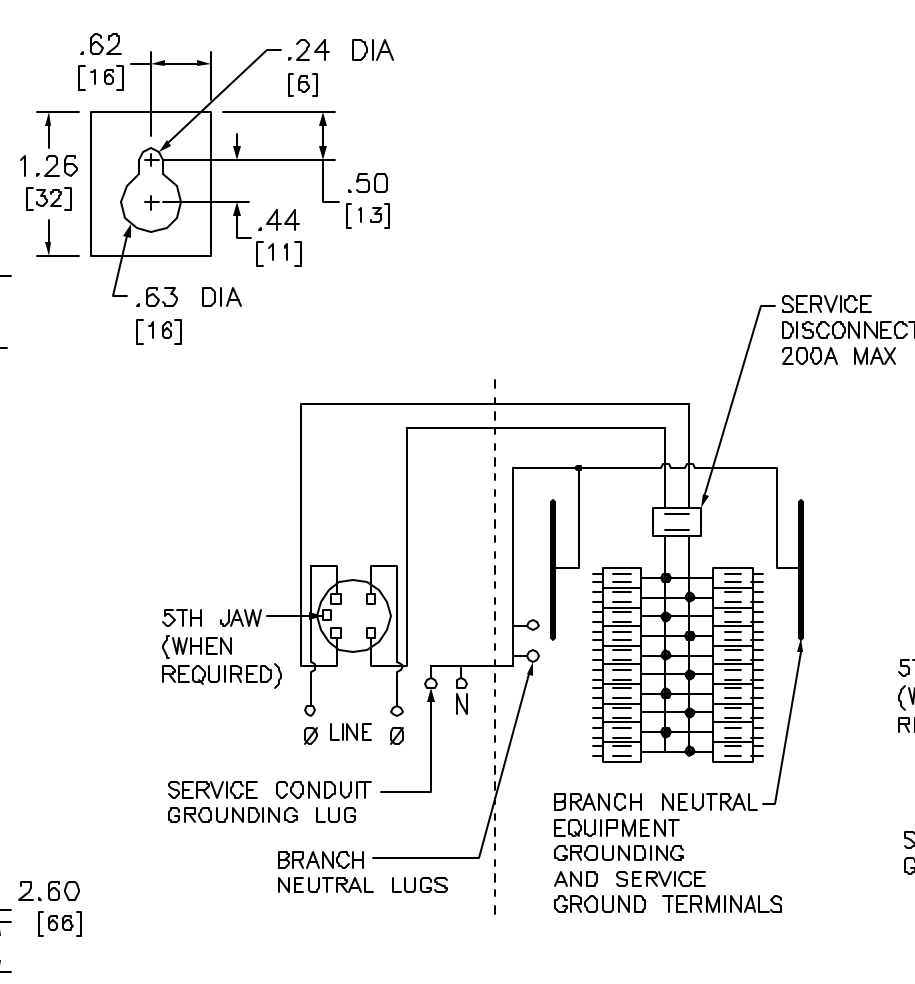
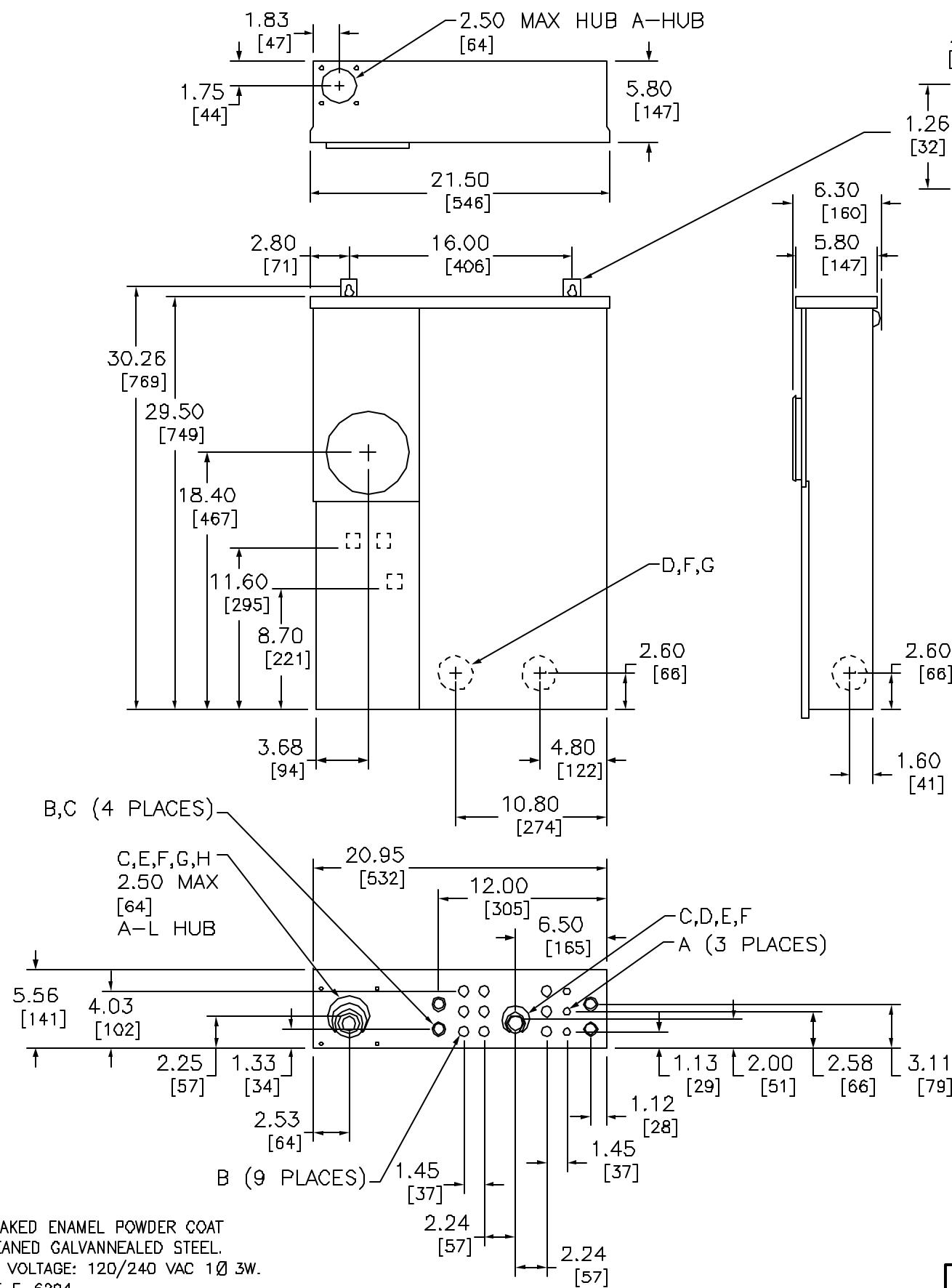
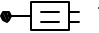




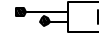
KNOCKOUTS		
SYMBOL	CONDUIT SIZE	
	IN	MM
A	.50	13
B	.75	19
C	1.00	25
D	1.25	32
E	1.50	38
F	2.00	51
G	2.50	64
H	3.00	76



SC2040M200S

SC12L200S

 TWO SINGLE POLE, ONE PLUG-ON SPACE TYPE HOMT OR ONE SINGLE POLE, TYPE HOM.
 TWO POLE TYPE HOM, HOMA OR HOMT (15-110A) MAY PLUG ON TWO ADJACENT SPACES.
 TWO POLE TYPE HOMA (150-200A) MAY PLUG ON FOUR ADJACENT SPACES.
 USE 15-110A AND 150-200A BRANCH BREAKERS ONLY
 TOTAL CIRCUIT BREAKER HANDLE RATING NOT TO EXCEED 170A PER BRANCH CIRCUIT CONNECTOR.

 TWO POLE TYPES HOM OR HOMA. INSTALL NO MORE THAN SIX CIRCUIT BREAKERS.
 USE 15-110A AND 150-200A BRANCH BREAKERS ONLY.
 TOTAL CIRCUIT BREAKER HANDLE RATING NOT TO EXCEED 170A PER CIRCUIT CONNECTOR.

A SQUARE D UL LISTED SECONDARY SURGE ARRESTER MAY PLUG ON TWO ADJACENT SPACES. ORDER CATALOG NO.HOM2175SB

DUAL DIMENSIONS: INCHES MILLIMETERS

AMPERE RATING	FACTORY INSTALLED BYPASS TYPE	SHORT CIRCUIT CURRENT RATING	CATALOG NUMBER	SERIES	SPACES	MAXIMUM NUMBER OF SINGLE POLE HOM CIRCUITS	LINE SIDE PHASE & NEUTRAL LUGS (AWG/KCMIL)	LARGE BRANCH NEUTRAL AWG
200	NONE	10K	SC12L200S	M01	12	SEE ABOVE WIRING DIAGRAM	#4-250 CU/AL	#14-2/0 CU/AL
		22K	SC2040M200S		20	40		

NOTES:
 FINISH - GRAY BAKED ENAMEL POWDER COAT PAINT OVER CLEANED GALVANNEALED STEEL.
 MAXIMUM SYSTEM VOLTAGE: 120/240 VAC 1Ø 3W.
 UL LISTED - FILE E-6294
 SUITABLE ONLY FOR USE AS SERVICE EQUIPMENT.
 SUITABLE FOR UNDERGROUND/OVERHEAD SERVICE.
 MEETS EUSERC SPECIFICATIONS.

COMBINATION SERVICE ENTRANCE DEVICES
 RING TYPE
 RAINPROOF NEMA TYPE 3R ENCLOSURE
 SURFACE ONLY



DWG# 3189
No.