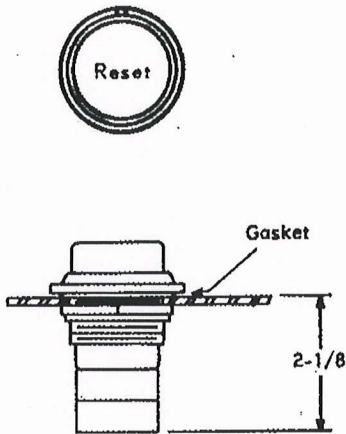




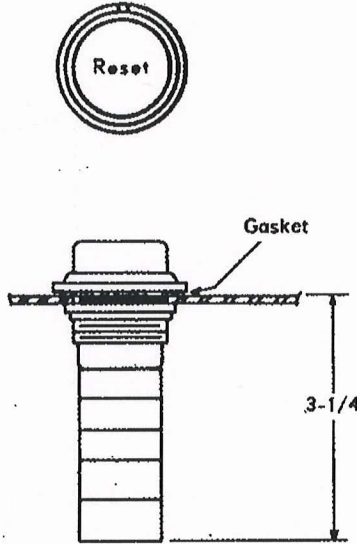
SQUARE D[®]
CLASS 9066, TYPES RB-1 and RB-2
EXTERNAL RESET KITS

Instruction Sheet
 30072-100-48
 June, 1972

For Type S Combination Starters in NEMA 12 Enclosures only



RB-1
Figure 1



RB-2
Figure 2

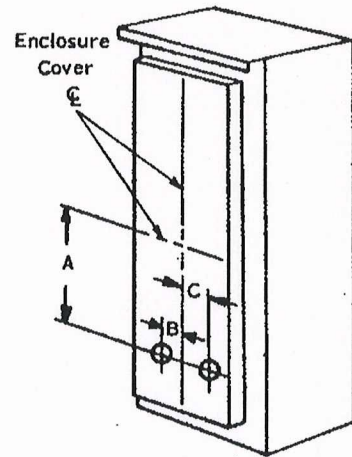


Figure 3

INSTALLATION

1. Locate and drill hole (See Figs. 3 and 4).
2. Place gasket over threaded portion of Reset Assembly.
3. Insert operator from outside of door.
4. Thread nut in place.

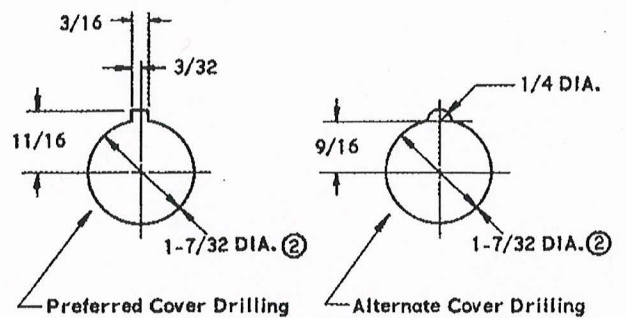
LOCATION DIMENSIONS

	A	B	C
RB-1 (Size 0 and 1)	7-27/32	1-3/16	-
RB-2 (Size 2)	9-7/8	-	5/8

PARTS LIST

Description	Part Number	Quantity	
		RB-1	RB-2
Reset Assembly	30019-113-55	1	-
Reset Assembly	30019-113-64	-	1
Gasket	29206-30700	1	1
Nut	30019-121-01	1	1

COVER DRILLING



② Units also mount in
 1-13/64" diameter hole

Figure 4