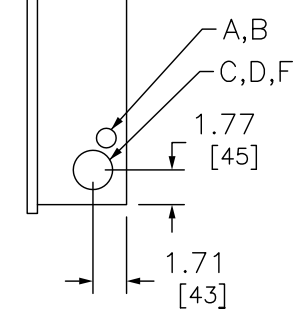


SYMBOL	KNOCKOUTS	
	CONDUIT SIZE IN	CONDUIT SIZE MM
A	.50	13
B	.75	19
C	1.00	25
D	1.25	32
E	1.50	38
F	2.00	51
G	2.50	64
H	3.00	76



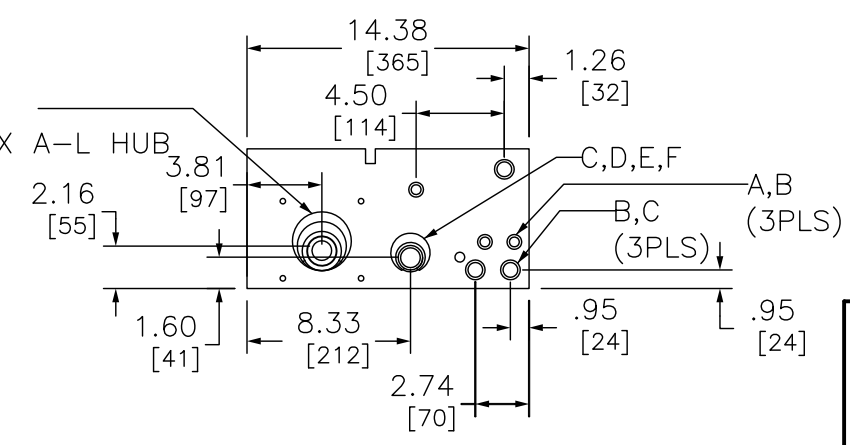
● TWO SINGLE POLE, ONE PLUG-ON SPACE TYPE HOMT OR ONE SINGLE POLE, ONE PLUG-ON SPACE TYPE HOM. TWO POLE TYPE HOM, HOMA OR HOMT MAY PLUG-ON TWO ADJACENT SPACES. A 100 AMP MAX. CIRCUIT BREAKER MAY BE INSTALLED IN THE LOWEST POSITION IN THE BRANCH PANEL. ALL OTHER POSITIONS ARE LIMITED TO 70 AMP MAX. CIRCUIT BREAKERS.

SC816D150C
SC816D200C

DUAL DIMENSIONS: INCHES
MILLIMETERS

AMPERE RATING	FACTORY INSTALLED BYPASS TYPE	SHORT CIRCUIT CURRENT RATING	CATALOG NUMBER	SERIES	SPACES	MAXIMUM NUMBER OF SINGLE POLE HOM CIRCUITS	LINE SIDE PHASE & NEUTRAL LUGS (AWG/KCMIL)	SERVICE GROIND LUG (AWG/KCMIL)	FEED THROUGH PHASE & NEUTRAL LUGS (AWG/KCMIL)
150	NONE	10K	SC816D150C	002	8	16	#6-300	#14-1/0	#6-250
200			SC816D200C						

NOTES:
FINISH - GRAY BAKED ENAMEL POWDER COAT PAINT OVER CLEANED GALVANNEALED STEEL.
MAXIMUM SYSTEM VOLTAGE: 120/240 VAC 1Ø 3W.
UL LISTED - FILE E-6294
SUITABLE ONLY FOR USE AS SERVICE EQUIPMENT.
SUITABLE FOR UNDERGROUND/OVERHEAD SERVICE.
CONVERTIBLE TO SEMIFLUSH WITH SC200F FLANGE KIT



COMBINATION SERVICE ENTRANCE DEVICES
RING TYPE ALL-IN-ONE
RAINPROOF NEMA TYPE 3R ENCLOSURE
SURFACE/SEMI FLUSH

SQUARE D
by Schneider Electric

DWG# 1993
NO.