

Cedar Plus

Safe power and light outdoors

Product catalogue
2009



Schneider
Electric



Contents

Presentation	6
Production offer	6
Switches	6
Socket-outlets	7
Combinations	7
Accessories	9
Quick selection guide	10

Safe power and light outdoors



Cedar Plus provides you with safe, robust and easy-to-install answers for light control and power in outdoor and damp indoor environments.

Smooth shape and high-quality material plus modern, design make Cedar Plus perfect for all applications.





P30780

> Robust

Cedar Plus is a robust and weatherproof wiring device range with polyamide plastic* and splashproof IP44 design.

**shock, heat, UV and chemical resistant plastic*



P30302

> Safe

Cedar Plus has reliable products, featuring child-proof socket-outlets.



P30241



P30259

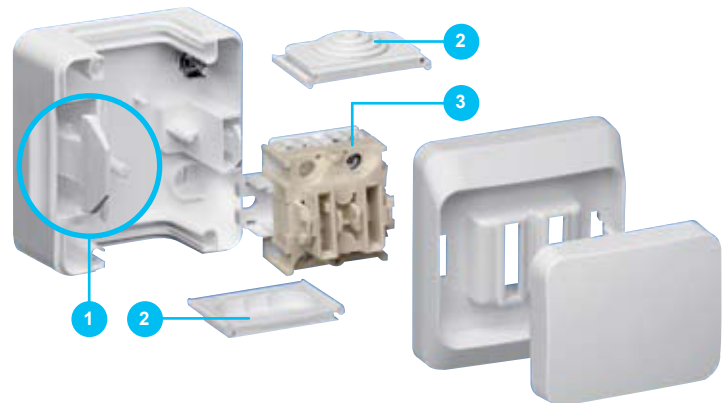


P30306



P30776

> Easy to install



P30282

1. Snap system

The snap system is a real time-saver. Just snap the front and base plates together and you're done! No screws needed.

2. Grommet

Install the product as you like, with flat or pyramid-shaped grommets. Both are reversible and provide ultimate IP44 weatherproof protection.

3. Lift terminal

Lift terminals on switches and socket-outlets securely connect inserts and wires.

Product offer



Switches 16 AX - 250 V AC

Rocker switches 16 AX

	1-pole	2 circuits
Colour		
<input type="checkbox"/> white	WDE000510	WDE000550
<input type="checkbox"/> grey	WDE000610	WDE000650
	2 way	intermediate
Colour		
<input type="checkbox"/> white	WDE000560	WDE000570
<input type="checkbox"/> grey	WDE000660	WDE000670
	2-pole	
Colour		
<input type="checkbox"/> white	WDE000520	
<input type="checkbox"/> grey	WDE000620	

Rocker switches with pilot lamp 16 AX

	1-pole	2 circuits
Colour		
<input type="checkbox"/> white	WDE000514	WDE000551
<input type="checkbox"/> grey	WDE000614	WDE000651
	2 way	intermediate
Colour		
<input type="checkbox"/> white	WDE000561	WDE000571
<input type="checkbox"/> grey	WDE000661	WDE000671
	2-pole	
Colour		
<input type="checkbox"/> white	WDE000521	
<input type="checkbox"/> grey	WDE000621	

Rocker push-buttons 16 A

	1-pole	1-pole with light symbol
Colour		
<input type="checkbox"/> white	WDE000511	WDE000513
<input type="checkbox"/> grey	WDE000611	WDE000613
	1-pole with bell symbol	
Colour		
<input type="checkbox"/> white	WDE000512	
<input type="checkbox"/> grey	WDE000612	

Product offer



WDE000515



WDE000540



WDE000542



WDE000522



WDE000525



WDE000580

Rocker push-buttons with pilot lamp

1-pole with bell symbol



Colour	
white	WDE000515
grey	WDE000615

1-pole with light symbol



white	WDE000516
grey	WDE000616

Socket-outlets 16 A - 250 V AC

Socket-outlets with earth pin contact and shutters

single



Colour	
white	WDE000540
grey	WDE000640

single, transparent lid



white	WDE000542
grey	WDE000642

double



Colour	
white	WDE000522
grey	WDE000622

double, transparent lid



white	WDE000524
grey	WDE000624

Socket-outlets with side earth contact and shutters

single



Colour	
white	WDE000541
grey	WDE000641

single, transparent lid



white	WDE000543
grey	WDE000643

double



Colour	
white	WDE000523
grey	WDE000623

double, transparent lid



white	WDE000525
grey	WDE000625

Combinations 16 AX - 250 V AC

Socket-outlet with earth pin contact and rocker switch

1-pole



Colour	
white	WDE000580
grey	WDE000680

2-pole



white	WDE000582
grey	WDE000682

2 way



Colour	
white	WDE000584
grey	WDE000684

Product offer



WDE000581



WDE000583



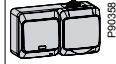
WDE000500



WDE000504

Socket-outlet with earth pin contact and rocker switch with pilot lamp

1-pole



Colour

- white WDE000581
- grey WDE000681

2-pole



Colour

- white WDE000583
- grey WDE000683

2 way



Colour

- white WDE000585
- grey WDE000685

Socket-outlet with side earth contact and rocker switch

1-pole



Colour

- white WDE000500
- grey WDE000600

2-pole



Colour

- white WDE000502
- grey WDE000602

2 way



Colour

- white WDE000504
- grey WDE000604

Product offer



WDE000501

Socket-outlet with side earth contact and rocker switch with pilot lamp

1-pole



Colour	
<input type="checkbox"/> white	WDE000501
<input type="checkbox"/> grey	WDE000601

2-pole



Colour	
<input type="checkbox"/> white	WDE000503
<input type="checkbox"/> grey	WDE000603

2 way



Colour	
<input type="checkbox"/> white	WDE000505
<input type="checkbox"/> grey	WDE000605

Accessories

Rocker

rocker with label holder



Colour	
<input type="checkbox"/> white	WDE000506
<input type="checkbox"/> grey	WDE000606



WDE000506

Quick selection guide

Switches 16 AX - 250 V AC



WDE000550

Rocker switches



	white	grey
1-pole	WDE000510	WDE000610
2 circuits	WDE000550	WDE000650
2 way	WDE000560	WDE000660
intermediate	WDE000570	WDE000670
2-pole	WDE000520	WDE000620

Rocker switches with pilot lamp



1-pole	WDE000514	WDE000614
2 circuits	WDE000551	WDE000651
2 way	WDE000561	WDE000661
intermediate	WDE000571	WDE000671
2-pole	WDE000521	WDE000621

Push-buttons 16 A - 250 V AC



WDE000512

Rocker push-buttons



1-pole	WDE000511	WDE000611
1-pole with bell symbol	WDE000512	WDE000612
1-pole with light symbol	WDE000513	WDE000613

Rocker push-buttons with pilot lamp



1-pole with bell symbol	WDE000515	WDE000615
1-pole with light symbol	WDE000516	WDE000616

Socket-outlets 16 A - 250 V AC



WDE000540

Socket-outlet with earth pin contact and shutters



single	WDE000540	WDE000640
single, transparent lid	WDE000542	WDE000642
double	WDE000522	WDE000622
double, transparent lid	WDE000524	WDE000624

Socket-outlet with side earth contact and shutters



single	WDE000541	WDE000641
single, transparent lid	WDE000543	WDE000643
double	WDE000523	WDE000623
double, transparent lid	WDE000525	WDE000625

Combinations 16 AX - 250 V



WDE000580

Socket-outlet with earth pin contact and rocker switch



1-pole	WDE000580	WDE000680
2-pole	WDE000582	WDE000682
2 way	WDE000584	WDE000684

Socket-outlet with earth pin contact and rocker switch with pilot lamp



1-pole	WDE000581	WDE000681
2-pole	WDE000583	WDE000683
2 way	WDE000585	WDE000685

Socket-outlet with side earth contact and rocker switch



1-pole	WDE000500	WDE000600
2-pole	WDE000502	WDE000602
2 way	WDE000504	WDE000604

Socket-outlet with side earth contact and rocker switch with pilot lamp



1-pole	WDE000501	WDE000601
2-pole	WDE000503	WDE000603
2 way	WDE000505	WDE000605



WDE000585

Accessories



WDE000506

Rocker



rocker with marking label	WDE000506	WDE000606
---------------------------	-----------	-----------

Colour choices

5●●	white	(e.g.: WDE0005●●)
6●●	grey	(e.g.: WDE0006●●)

p.6

p.7

p.9



Schneider Electric
IP44 Cedar Plus range
protects you

Schneider Electric Industries SAS

35 rue Joseph Monier
F-92500 Rueil-Malmaison
www.schneider-electric.com

As standards, specifications and designs change from time to time, please ask for confirmation of the information given in this publication.



*This document has been printed
on ecological paper*

Publishing: Schneider Electric Industries SAS
Design: Arriba
Illustrations: CBJ creations
Photos: www.kalice.fr
Printing: