


1.0 Products covered by this Test Summary

Model Number	Description	Notes
SRYLBM	APC Smart-UPS Ultra Lithium-ion Battery Module	

	<p>Battery pack is a manufactured article consisting of a plastic and metal sealed case containing electronics and cylindrical lithium-ion battery/cells.</p>
---	---

1.1 Batteries in Products

#	Model Number	Description	Notes
1	SRYLBM, 911-7013	Rechargeable Li-ion Battery Pack; 180V, 2.47Ah, 444.6Wh	OR
2	SRYLBM, 911-9024	Rechargeable Li-ion Battery Pack; 180V, 2.47Ah, 444.6Wh	

1.2 Cells in Batteries

#	Model Number	Description	Notes
1	US18650VTC4	Lithium-ion Cell; 3.6Vdc, 2100mAh	For SRYLBM, 911-7013
2	INR18650-25PG	Lithium-ion Cell; 3.6Vdc, 2500mAh	For SRYLBM, 911-9024

2.0 Manufacturers of Cells/Batteries

2.1 Battery Makers #1

Name	Address	Phone	Email
Flextronics Power Systems (Dongguan) Co., Ltd. (SRYLBM, 911-7013)	Mechanical Industrial Zone, ShiDa Road, DaLing Shan, 523817 DongGuan, Guangdong, People's Republic of China.	+86-769-85602828	ocean.xiao@flex.com
Fujian SCUD Power Technology Co., Ltd (SRYLBM, 911-9024)	No.135, Rujiang East Road, Mawei District Fuzhou City, Fujian Province, P.R. CHINA	+8613599043711	lily.li@scudpower.com

2.1 Cell Makers #2

Name	Address	Phone	Website
Tohoku Murata Manufacturing Co., Ltd. (SRYLBM, 911-7013)	1-1 Shimosugishita, Takakura, Hiwada-machi, Koriyama-shi, Fukushima, 963-0531 Japan	+81-24-955-7770	www.murata.com
JIANGSU TENPOWER LITHIUM CO., LTD. (SRYLBM, 911-9024)	6 Xinfeng Road East, Economic Development Zone Zhangjiagang, Jiangsu, China	+86 17506182672	www.tenpowercell.com

3.0 Test Laboratories of Cells / Batteries

3.1 Test for Battery #1

Name	Address	Phone	Website
Guangdong UTL Co., Ltd. (SRYLBM, 911-7013)	Landing Testing Building, No.18 Center Road of Yayuan Industrial Zone, Nancheng District, Dongguan, Guangdong, China	+86-769-3893 3228	www.gdutl.com
Guangdong CRT Co., Ltd. (SRYLBM, 911-9024)	Building 3, 45 Fulai Road, Liaobu Town, Dongguan City, Guangdong, China	+86-512-6737 3633	www.gdcrt.com
Test ID No:	PNS21012382 01001 for SRYLBM_911-7013		

Test ID No:	CS1000181402003 for SRYLBM_911-9024
Date:	2021-01-07 for SRYLBM_911-7013
Date:	2025-07-31 for SRYLBM_911-9024
NOTES: The samples have been passed the test items of Manual of Tests and Criteria UN 38.3.	

3.1 Test for Cell #2

Name	Address	Phone	Website
N/A	N/A	N/A	N/A
Test ID No:	N/A		
Date:	N/A		

4.0 Parameters of Cells/Batteries

4.1 Battery #1 - SRYLBM, 911-7013

Parameters	Cell	Battery
Mass (Kg)	0.045	10.3
Lithium ion Indicate watt-hour rating (Wh)	7.6	444.6
Lithium metal Indicate lithium metal content in gram (g)	N/A	N/A

Physical Description of Cells / Batteries

4.2 Battery #2 - SRYLBM, 911-9024

Parameters	Cell	Battery
Mass (Kg)	0.045	10.47
Lithium ion Indicate watt-hour rating (Wh)	9	444.6
Lithium metal Indicate lithium metal content in gram (g)	N/A	N/A

Physical Description of Cells / Batteries

Photographs

SRYLBM, 911-7013

Smart-UPS Lithium-Ion

Rechargeable Li-Ion Battery Pack

Model: SRYLBM

Rating: 180V \equiv 2.47Ah;444.6Wh
Max Charge Voltage/Current:XXV/XXA
Maximum short circuit current:xxxmA
Duration:xxxxmsec
IP20

P

CONSULT THE USER MANUAL PRIOR TO OPERATING THIS BATTERY!
CONSULTER LE MANUEL D'UTILISATION AVANT D'UTILISER CETTE BATTERIE!
BITTE KONSULTIEREN SIE DAS BENUTZERHANDBUCH VOR DER BATTERIE ZUM BETRIEB!

WARNING: RISK OF FIRE, EXPLOSION OR BURNS

- Do not short the battery terminals.
- Do not incinerate, crush or disassemble.
- Do not overcharge or over discharge.
- Do not reverse connections (polarity) between charger and battery.
- Do not operate beyond published voltage, current, and temperature limits.

ATTENTION: RISQUE D'INCENDIE, D'EXPLOSION OU DE BRÛLURES

- NE PAS court-circuiter les bornes de la batterie.
- NE PAS incinérer, écraser ou désassembler.
- NE PAS surcharger ou décharger excessivement la batterie.
- NE PAS inverser la polarité entre le chargeur et la batterie.
- NE PAS utiliser au-delà des plages limites de tension, d'intensité et de température.

Smart-UPS Lithium-Ion

Rechargeable Li-Ion Battery Pack

Model: 911-7013

Rating: 180V \equiv 2.47Ah;444.6Wh
Max Charge Voltage/Current:200V/4.2A
Maximum short circuit current:600A
Duration:5msec
IP20

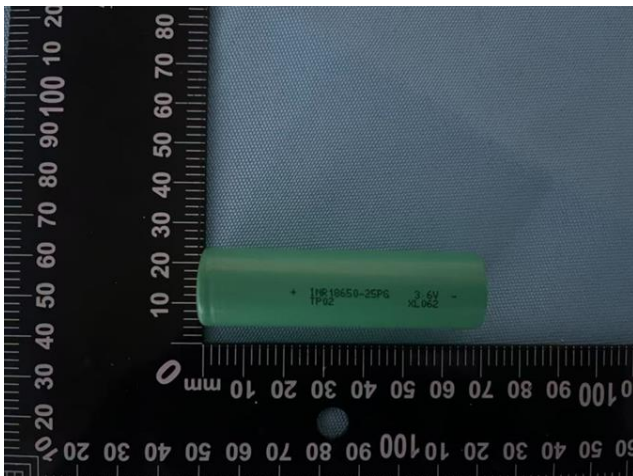
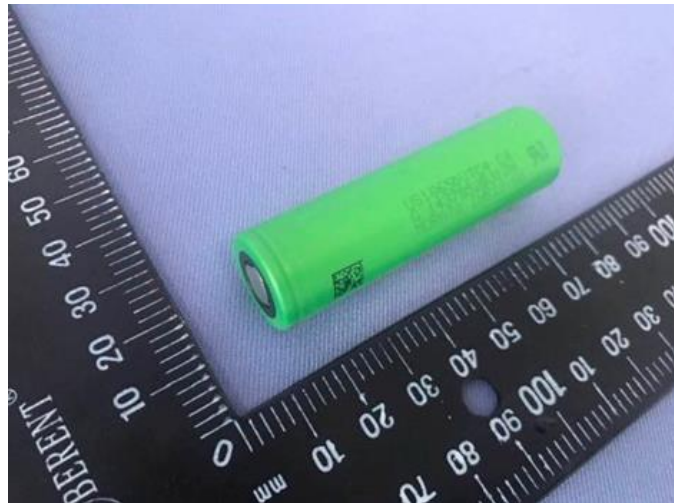
CONSULT THE USER MANUAL PRIOR TO OPERATING THIS BATTERY!
CONSULTER LE MANUEL D'UTILISATION AVANT D'UTILISER CETTE BATTERIE!
BITTE KONSULTIEREN SIE DAS BENUTZERHANDBUCH VOR DER BATTERIE ZUM BETRIEB!

WARNING: RISK OF FIRE, EXPLOSION OR BURNS

- Do not short the battery terminals.
- Do not incinerate, crush or disassemble.
- Do not overcharge or over discharge.
- Do not reverse connections (polarity) between charger and battery.
- Do not operate beyond published voltage, current, and temperature limits.

ATTENTION: RISQUE D'INCENDIE, D'EXPLOSION OU DE BRÛLURES

- NE PAS court-circuiter les bornes de la batterie.
- NE PAS incinérer, écraser ou désassembler.
- NE PAS surcharger ou décharger excessivement la batterie.
- NE PAS inverser la polarité entre le chargeur et la batterie.
- NE PAS utiliser au-delà des plages limites de tension, d'intensité et de température.



SRYLBM, 911-9024

APC™ Rechargeable Li-ion Battery Pack

Model	Nominal Battery			Maximum charging	
	V DC	Capacity	Type	V DC	A
SRYLBM	180	2.47Ah/444.6Wh	Li-ion	200	4.2

⚠ WARNING / AVERTISSEMENT

RISK OF FIRE, EXPLOSION OR BURNS

- Do not short the battery terminals.
- Do not incinerate, crush, disassemble, dispose of in fire.
- Do not overcharge or over discharge.
- Do not reverse connections (polarity) between charger and battery.
- Do not operate beyond published voltage, current and temperature limits.

Failure to follow these instructions can result in death, serious injury or equipment damage.

RISQUE D'INCENDIE, D'EXPLOSION OU DE BRÛLURES

- NE PAS court-circuiter les bornes de la batterie.
- NE PAS incinérer, écraser ou décomposer: jeter au feu.
- NE PAS surcharger ou décharger excessivement la batterie.
- NE PAS inverser la polarité entre le chargeur et la batterie.
- NE PAS utiliser au-delà des plages limites de tension, d'intensité et de température.

Si ces directives ne sont pas respectées, cela peut entraîner des blessures ou des dommages matériels.

⚠ Warnung / 警告

GEFAHR VON FEUER, EXPLOSION ODER VERBRENNUNGEN

- Schließen Sie die Batteriepole nicht kurz.
- Nicht verbrennen, zerdrücken, zerlegen oder ins Feuer werfen.
- Nicht überladen oder entladen.
- Vertauschen Sie die Anschlüsse (Polarität) zwischen Ladegerät und Akku nicht.
- Betreiben Sie das Gerät nicht außerhalb der veröffentlichten Spannung, Strom- und Temperaturgrenzen.

Die Nichtbeachtung dieser Anweisungen kann zum Tod, zu schweren Verletzungen oder zu Sachschäden führen.

火災、爆発、火傷の危険

- バッテリー端子をショートさせないでください。
- 焼却、粉砕、分解、火中に入れないでください。
- 過充電や過放電をしないでください。
- 充電機とバッテリーの接続（極性）を逆にしないでください。
- 公表されている電圧、電流、温度の範囲を越えて動作させないでください。

これらの指示に従わないと、死亡、重傷、または機体の故障につながる恐れがあります。

INR19166/(2P50S)H/0+40/80 Max. Short Circuit Current: 600A
Duration: 15msec

REFER THE USER MANUAL PRIOR TO OPERATING THIS BATTERY!
REFERER LE MANUEL D'UTILISATION AVANT D'UTILISER CETTE BATTERIE!
Lesen Sie vor dem Betrieb dieser Batterie die TE H-Bedienungsanleitung!
このバッテリーを使用する前に、ユーザーマニュアルを参照してください。
This device complies with part 15 of the FCC rules. Operation is subject to the following two conditions: (1) This device may not cause harmful interference and (2) This device must accept any interference received, including interference that may cause undesired operation. Complies with CAN ICES-3 (A)/NMB-3(A).

Este dispositivo cumple con la sección 15 de las reglas de la FCC. El funcionamiento está sujeto a las siguientes dos condiciones: (1) Este dispositivo no puede causar interferencias perjudiciales y (2) Este dispositivo debe aceptar cualquier interferencia recibida, incluidas las interferencias que puedan causar un funcionamiento no deseado. Cumple con CAN ICES-3 (A)/NMB-3(A).

CE US CA UK VCI FC PS E
Schneider Electric Industries SAS
35 rue Joseph Monier
Rueil Malmaison 92500-France
シナイダー
エレクティック(株)
スクリーン
エレクトロニクス(株)
Scan to download
Regulatory Information
Made in China
Fabriqué en Chine
BATTERY MUST BE RECYCLED
BATTERIE DOIT ÊTRE RECYCLÉE
Schneider Electric

APC™ Rechargeable Li-ion Battery Pack

Model	Nominal Battery			Maximum charging	
	V DC	Capacity	Type	V DC	A
911-9024	180	2.47Ah/444.6Wh	Li-ion	200	4.2

⚠ WARNING / AVERTISSEMENT

RISK OF FIRE, EXPLOSION OR BURNS

- Do not short the battery terminals.
- Do not incinerate, crush, disassemble, dispose of in fire.
- Do not overcharge or over discharge.
- Do not reverse connections (polarity) between charger and battery.
- Do not operate beyond published voltage, current and temperature limits.

Failure to follow these instructions can result in death, serious injury or equipment damage.

RISQUE D'INCENDIE, D'EXPLOSION OU DE BRÛLURES

- NE PAS court-circuiter les bornes de la batterie.
- NE PAS incinérer, écraser ou décomposer: jeter au feu.
- NE PAS surcharger ou décharger excessivement la batterie.
- NE PAS inverser la polarité entre le chargeur et la batterie.
- NE PAS utiliser au-delà des plages limites de tension, d'intensité et de température.

Si ces directives ne sont pas respectées, cela peut entraîner des blessures ou des dommages matériels.

⚠ Warnung / 警告

GEFAHR VON FEUER, EXPLOSION ODER VERBRENNUNGEN

- Schließen Sie die Batteriepole nicht kurz.
- Nicht verbrennen, zerdrücken, zerlegen oder ins Feuer werfen.
- Nicht überladen oder entladen.
- Vertauschen Sie die Anschlüsse (Polarität) zwischen Ladegerät und Akku nicht.
- Betreiben Sie das Gerät nicht außerhalb der veröffentlichten Spannung, Strom- und Temperaturgrenzen.

Die Nichtbeachtung dieser Anweisungen kann zum Tod, zu schweren Verletzungen oder zu Sachschäden führen.

火災、爆発、火傷の危険

- バッテリー端子をショートさせないでください。
- 焼却、粉砕、分解、火中に入れないでください。
- 過充電や過放電をしないでください。
- 充電機とバッテリーの接続（極性）を逆にしないでください。
- 公表されている電圧、電流、温度の範囲を越えて動作させないでください。

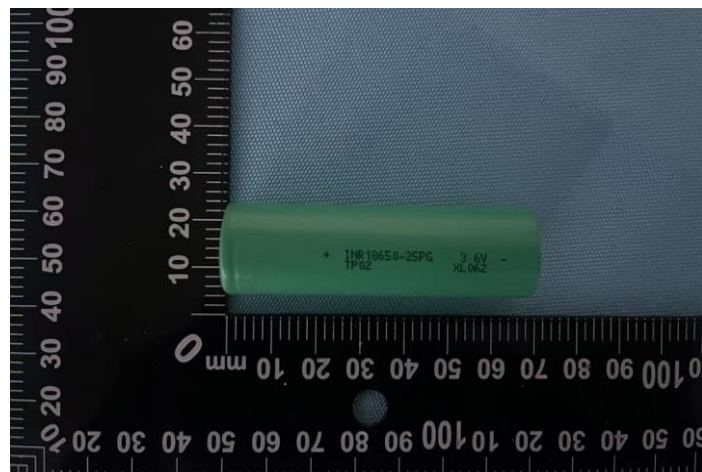
これらの指示に従わないと、死亡、重傷、または機体の故障につながる恐れがあります。

INR19166/(2P50S)H/0+40/80 Max. Short Circuit Current: 600A
Duration: 15msec

REFER THE USER MANUAL PRIOR TO OPERATING THIS BATTERY!
REFERER LE MANUEL D'UTILISATION AVANT D'UTILISER CETTE BATTERIE!
Lesen Sie vor dem Betrieb dieser Batterie die TE H-Bedienungsanleitung!
このバッテリーを使用する前に、ユーザーマニュアルを参照してください。
This device complies with part 15 of the FCC rules. Operation is subject to the following two conditions: (1) This device may not cause harmful interference and (2) This device must accept any interference received, including interference that may cause undesired operation. Complies with CAN ICES-3 (A)/NMB-3(A).

Este dispositivo cumple con la sección 15 de las reglas de la FCC. El funcionamiento está sujeto a las siguientes dos condiciones: (1) Este dispositivo no puede causar interferencias perjudiciales y (2) Este dispositivo debe aceptar cualquier interferencia recibida, incluidas las interferencias que puedan causar un funcionamiento no deseado. Cumple con CAN ICES-3 (A)/NMB-3(A).

CE US CA UK VCI FC PS E
Schneider Electric Industries SAS
35 rue Joseph Monier
Rueil Malmaison 92500-France
シナイダー
エレクティック(株)
スクリーン
エレクトロニクス(株)
Scan to download
Regulatory Information
Made in China
Fabriqué en Chine
BATTERY MUST BE RECYCLED
BATTERIE DOIT ÊTRE RECYCLÉE
Schneider Electric



5.0 List of tests conducted and results

Test	Pass	Fail	N/A
T1 – Altitude simulation	X		
T2 – Thermal Tests	X		
T3 – Vibration	X		
T4 – Shock	X		
T5 – External Short Circuit	X		
T6 – Impact	X		
T7 – Overcharge	X		
T8 – Forced Discharge	X		

6.0 UN38.3 Test Conformation for the Cells inside the battery:

	Cell UN 38.3 Test Confirmed (Yes or No)
When no separate document for the cells is provided, this confirms that the cells inside the battery have successfully passed the UN 38.3 test. In this case under section 5.0 the T7 and T8 must be marked as “passed” and here under section 6.0 “Cell UN 38.3 Test confirmed” needs to be Yes.	Yes

7.0 Reference to assembled battery testing requirements

	Not Applicable
	N/A

8.0 Reference to the edition on the Manual of Tests and Criteria applied

ST/SG/AC.10/11/Rev.6/Amend.1
Recommendations on the Transport of Dangerous Goods: Manual of Tests and Criteria, Part III Sub-Section 38.3 Lithium metal and lithium ion batteries
United Nations

9.0 Manufacture of the cell / battery is in accordance with quality management system as required by the regulations:

Schneider Electric certifies that all articles described in this Test Survey are in compliance with all applicable Schneider Electric Product Specifications, Manufacturing Processes, Quality Control Testing, Quality Plan per ISO9001: 2015, and Environmental guidelines.

Company: Schneider Electric – Secure Power Division
Signature:



Authorized representative:

Raymond P. Lizotte, Jr. Director, Sustainability Office
EMAIL: raymond.lizotte@SE.com Phone: +1 978-930-4141

Date of compilation: November 20, 2025
Place of expertise: Schneider Electric Andover R&D Center
Andover, MA 01810 United States

Company Seal



11.0 Attachments

Images of Test Report Identifiers
SRYLBM, 911-7013



概要编号 /
Summary No.: PNS21012382 01011

Lithium Cells or Battery Test Summary

锂电池或锂电池组测试概要

Battery Manufacturer/ 电池生产商:	Flextronics Power Systems (Dongguan) Co., Ltd. 伟创力电源(东莞)有限公司
Address/ 地址:	Mechanical Industrial Zone, ShiDa Road, DaLing Shan, 523817 DongGuan, GuangDong, People's Republic of China. 广东省东莞市大岭山镇机械工业区
Phone number /联系电话:	+86-769-85602828
E-mail/电子邮箱:	ocean.xiao@flex.com
Website/公司网址:	N/A

Battery Type/ 电池类型:	Lithium ion Battery / 锂离子电池
Battery Rating/ 电池参数:	180V, 2.47Ah
Battery Physical description/ 电池描述:	Multicolor / 多种颜色, Prismatic / 棱柱形, 50S2P
Battery Model/ 电池型号:	SRYLBM
Battery Weight/ 电池重量(kg):	10.3
Battery Watt-hour Rating/ 电池瓦时(Wh):	444.6
Battery Lithium content/ 锂金属含量(g):	--

Above Lithium cells or battery have been successfully tested and comply with the UN Manual of Tests and Criteria Part III Subsection 38.3, Rev.6/Amend.1. Test information as below:

上述电池已经通过测试并通过联合国《关于危险品货物运输的建议书》试验和标准手册第六修订版修正1,

38.3 节: 锂电池. 测试信息如下:

Test Items/测试项目		Result/测试结果
38.3.4.1	T.1: Altitude simulation/高度模拟	Pass/通过
38.3.4.2	T.2: Thermal test/温度测试	Pass/通过
38.3.4.3	T.3: Vibration/振动测试	Pass/通过
38.3.4.4	T.4: Shock/冲击测试	Pass/通过
38.3.4.5	T.5: External short circuit/外部短路	Pass/通过
38.3.4.6	T.6: Impact/撞击	Pass/通过
38.3.4.7	T.7: Overcharge/过充电	Pass/通过
38.3.4.8	T.8: Forced discharge/强制放电	Pass/通过

Not Applicable for 38.3.3(f), 38.3.3(g)/不适用 38.3.3(f), 38.3.3(g)测试要求

As shown in the Test Report which form part of this test summary/ 如下测试报告是本测试概要的一部分

Test Report Number/测试报告号码:	PNS21012382 01001	Issued Date/发布日期:	2021-01-07
Test laboratory/ 测试实验室:	GUANGDONG UTL CO., LTD. 广东联鼎检测科技有限公司		
Test laboratory address/ 测试实验室地址:	Lianding Testing Building, No.18 Center Road of Yayuan Industrial Zone, Nancheng District, Dongguan, Guangdong, China 东莞市南城街道雅园工业区中心路18号联鼎检测		
Prepared by / 编写: Ryan Zhao / 赵晨 Project Engineer / 项目工程师	 Approved by / 批准: Sophie Wu / 吴娟 Chief Engineer / 主管工程师		



概要编号 /
Summary No.: PNS21012382 02011

Lithium Cells or Battery Test Summary

锂电池或锂电池组测试概要

Battery Manufacturer/ 电池生产商:	Flextronics Power Systems (Dongguan) Co., Ltd. 伟创力电源(东莞)有限公司
Address/ 地址:	Mechanical Industrial Zone, ShiDa Road, DaLing Shan, 523817 DongGuan, GuangDong, People's Republic of China. 广东省东莞市大岭山镇机械工业区
Phone number /联系电话:	+86-769-85602828
E-mail/电子邮箱:	ocean.xiao@flex.com
Website/公司网址:	N/A

Battery Type/ 电池类型:	Lithium ion Battery / 锂离子电池
Battery Rating/ 电池参数:	180V, 2.47Ah
Battery Physical description/ 电池描述:	Silver / 银色, Prismatic / 棱柱形, 50S2P
Battery Model/ 电池型号:	911-7013
Battery Weight/ 电池重量(kg):	10.3
Battery Watt-hour Rating/ 电池瓦时(Wh):	444.6
Battery Lithium content/ 锂金属含量(g):	--

Above Lithium cells or battery have been successfully tested and comply with the UN Manual of Tests and Criteria Part III Subsection 38.3, Rev.6/Amend.1. Test information as below:

上述电池已经通过测试并通过联合国《关于危险货物运输的建议书》试验和标准手册第六修订版修正1, 38.3 节: 锂电池. 测试信息如下:

Test Items/测试项目		Result/测试结果
38.3.4.1	T.1: Altitude simulation/高度模拟	Pass/通过
38.3.4.2	T.2: Thermal test/温度测试	Pass/通过
38.3.4.3	T.3: Vibration/振动测试	Pass/通过
38.3.4.4	T.4: Shock/冲击测试	Pass/通过
38.3.4.5	T.5: External short circuit/外部短路	Pass/通过
38.3.4.6	T.6: Impact/撞击	Pass/通过
38.3.4.7	T.7: Overcharge/过充电	Pass/通过
38.3.4.8	T.8: Forced discharge/强制放电	Pass/通过

Not Applicable for 38.3.3(f), 38.3.3(g)/不适用 38.3.3(f), 38.3.3(g)测试要求

As shown in the Test Report which form part of this test summary/ 如下测试报告是本测试概要的一部分

Test Report Number/测试报告号码:	PNS21012382 02001	Issued Date/发布日期:	2021-01-07
Test laboratory/ 测试实验室:	GUANGDONG UTL CO., LTD. 广东联鼎检测科技有限公司		
Test laboratory address/ 测试实验室地址:	Liangding Testing Building, No.18 Center Road of Yavuan Industrial Zone, Nancheng District, Dongguan, Guangdong, China. 东莞市南城街道雅园工业区中心路18号联鼎检测		
Prepared by / 编写: Ryan Zhao / 赵晨 Project Engineer / 项目工程师			Approved by / 批准: Sophie Wu / 吴娟 Chief Engineer / 主管工程师



Images of Test Report Identifiers
 SRYLBM, 911-9024

锂电池/钠离子电池 UN38.3 试验概要 Test Summary					
项目编号: SEKSZ202508054150					
单位信息 Company Information					
委托单位 Consignor	Schneider Electric Private Limited. Beary's Global Research Triangle, Sy.No 63/3B,Gorvigere Village, Whitefield Ashram Road, Bidarahalli Hobli, Bangalore 560067, India				
生产单位 Manufacturer	福建飞毛腿动力科技有限公司/ Fujian SCUD Power Technology Co., Ltd. 福建省福州市马尾区儒江东路 135 号/ No.135, Rujiang East Road, Mawei District Fuzhou City, Fujian Province P.R. China. 电话/Tel: 0591-63158888 邮箱/Mail: lily.li@scudpower.com				
测试单位 Test Lab	广东华认检测科技有限公司 / Guangdong CRT Co., Ltd. 广东省东莞市寮步镇福来路 45 号 3 栋 / Building 3, 45 Fulai Road, Liaobu Town, Dongguan City, Guangdong, China. 电话/Tel: 400-8167-268 邮箱/Mail: crt@gdcr.com 网址/Website: http:// www.gdcr.com				
电池信息 Battery Information					
名称 Name	可充电锂离子电池组 Rechargeable Li-ion Battery Pack	电池/电芯类别 Battery/Cell Classification	锂离子电池 Li-ion Battery		
型号 Type	SRYLBM	商标 Trademark	APC™		
额定电压 Normal Voltage	180VDC	额定容量 Rated Capacity	2.47Ah		
额定能量 Watt-hour rating	444.6Wh	外观/Appearance	银色近长方体 Approximate Silver Cuboid		
质量/Mass	10.431kg	锂含量/Li Content	不适用 N/A		
测试信息 Test Information					
测试报告编号 Test Report Number	CS10001814 02003	测试报告签发日期 Date of Test Report	2025.07.31		
测试标准 Edition of UN Manual of Tests and Criteria Used	联合国《试验和标准手册》(第 8 版) 38.3 节 UN "Manual of Tests and Criteria" ST/SG/AC.10/11/Rev.8/Subsection 38.3				
T.1: 高度模拟 Altitude Simulation	通过 Pass	T.2: 温度试验 Thermal Test	通过 Pass	T.3: 振动 Vibration	通过 Pass
T.4: 冲击 Shock	通过 Pass	T.5: 外部短路 External Short Circuit	通过 Pass	T.6: 撞击/挤压 Impact/Crush	通过 Pass
T.7: 过度充电 Overcharge	通过 Pass	T.8: 强制放电 Forced Discharge	通过 Pass		
UN38.3.3.1(f)或/或 UN38.3.3.2(d)	不适用 N/A		UN38.3.3.1(g)或/或 UN38.3.3.2(e)	不适用 N/A	
签名 Signatory 职务 Title	 王明辉 检验员		签发日期 Issued Date	 2025.08.05	

锂电池/钠离子电池 UN38.3 试验概要 Test Summary

项目编号: PEKSZ202508055101

单位信息 Company Information					
委托单位 Consignor	Schneider Electric Private Limited. Beary's Global Research Triangle, Sy.No 63/3B,Gorvigere Village, Whitefield Ashram Road, Bidarahalli Hobli, Bangalore 560067, India				
生产单位 Manufacturer	福建飞毛腿动力科技有限公司/ Fujian SCUD Power Technology Co., Ltd. 福建省福州市马尾区儒江东路 135 号/ No.135, Rujiang East Road, Mawei District Fuzhou City, Fujian Province P.R. China. 电话/Tel: 0591-63158888 邮箱/Mail: lily.li@scudpower.com				
测试单位 Test Lab	广东华认检测科技有限公司 / Guangdong CRT Co., Ltd. 广东省东莞市寮步镇福来路 45 号 3 栋 / Building 3, 45 Fulai Road, Liaobu Town, Dongguan City, Guangdong, China. 电话/Tel: 400-8167-268 邮箱/Mail: crt@gdcr.com 网址/Website: http:// www.gdcr.com				
电池信息 Battery Information					
名称 Name	可充电锂离子电池组 Rechargeable Li-ion Battery Pack	电池/电芯类别 Battery/Cell Classification		锂离子电池 Li-ion Battery	
型号 Type	911-9024	商标 Trademark		APC™	
额定电压 Normal Voltage	180VDC	额定容量 Rated Capacity		2.47Ah	
额定能量 Watt-hour rating	444.6Wh	外观/Appearance		银色近长方体 Approximate Silver Cuboid	
质量/Mass	10.431kg	锂含量/Li Content		不适用 N/A	
测试信息 Test Information					
测试报告编号 Test Report Number	CS10001814 02004	测试报告签发日期 Date of Test Report		2025.07.31	
测试标准 Edition of UN Manual of Tests and Criteria Used	联合国《试验和标准手册》(第 8 版) 38.3 节 UN "Manual of Tests and Criteria" ST/SG/AC.10/11/Rev.8/Subsection 38.3				
T.1: 高度模拟 Altitude Simulation	通过 Pass	T.2: 温度试验 Thermal Test	通过 Pass	T.3: 振动 Vibration	通过 Pass
T.4: 冲击 Shock	通过 Pass	T.5: 外部短路 External Short Circuit	通过 Pass	T.6: 撞击/挤压 Impact/Crush	通过 Pass
T.7: 过度充电 Overcharge	通过 Pass	T.8: 强制放电 Forced Discharge	通过 Pass		
UN38.3.3.1(f)或/or UN38.3.3.2(d)	不适用 N/A		UN38.3.3.1(g)或/or UN38.3.3.2(e)	不适用 N/A	
签名 Signatory 职务 Title	王明 检验员		签发日期 Issued Date	2025.08.05 DGM-CHINA	