

OUTLINE & MOUNTING FOR ASCO® 7000 SERIES AUTOMATIC TRANSFER & BYPASS-ISOLATION SWITCHES TYPES 7ATB, 7ACTB & 7ADTB RATED 800-2000 AMPERES

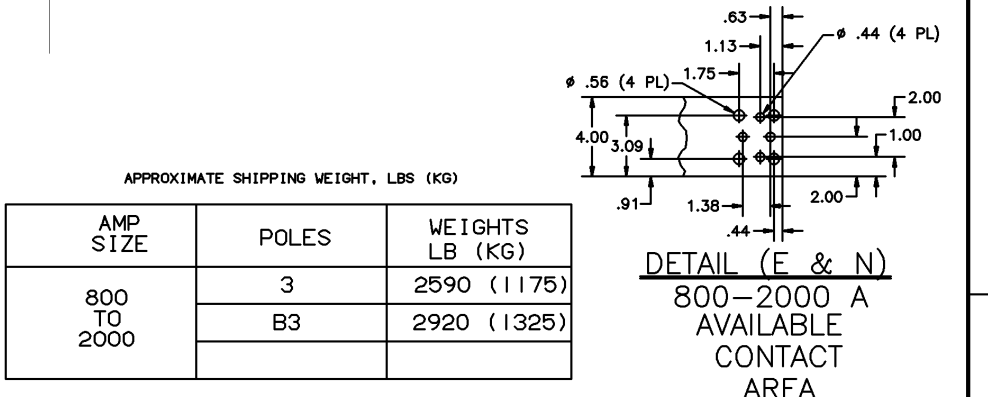
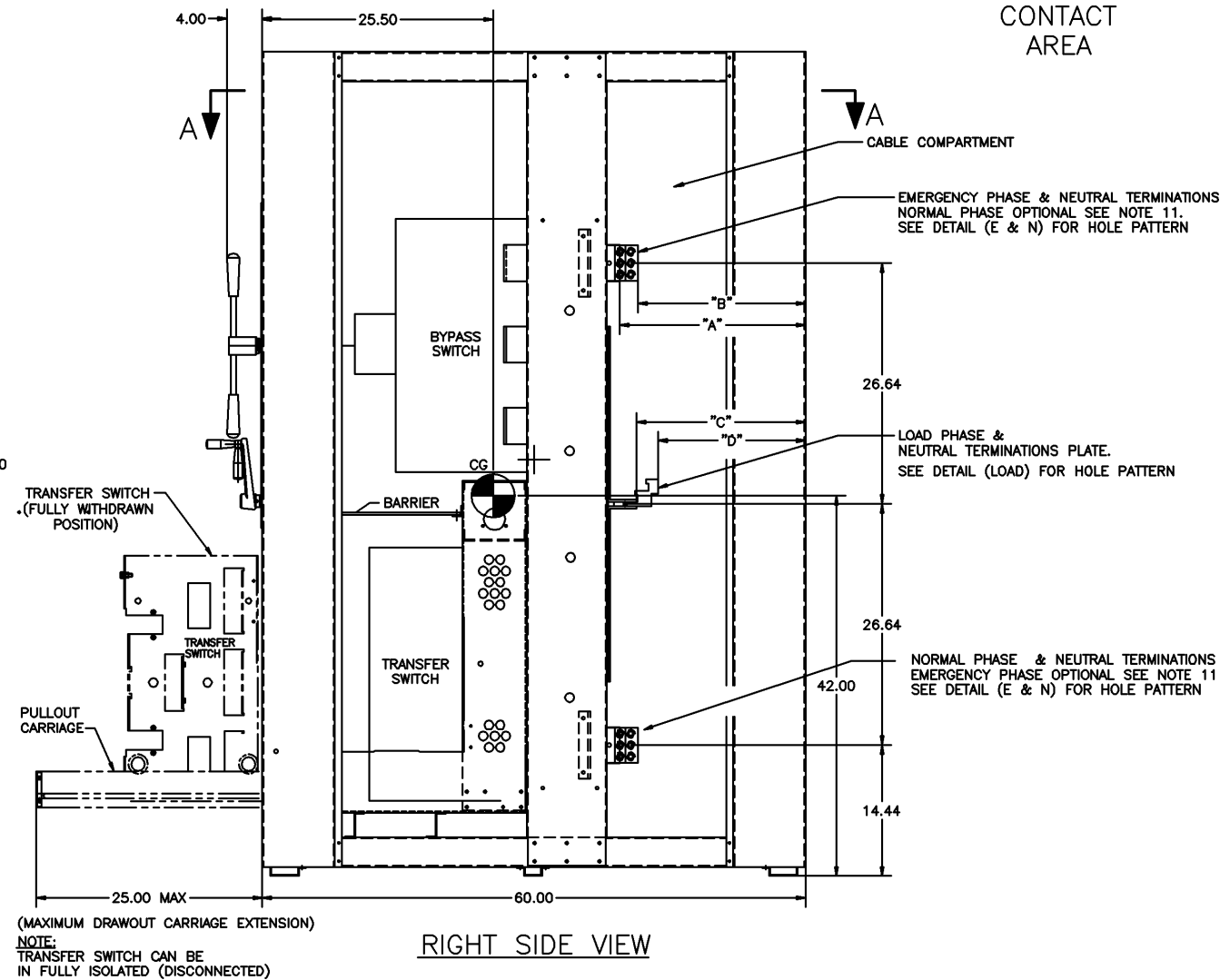
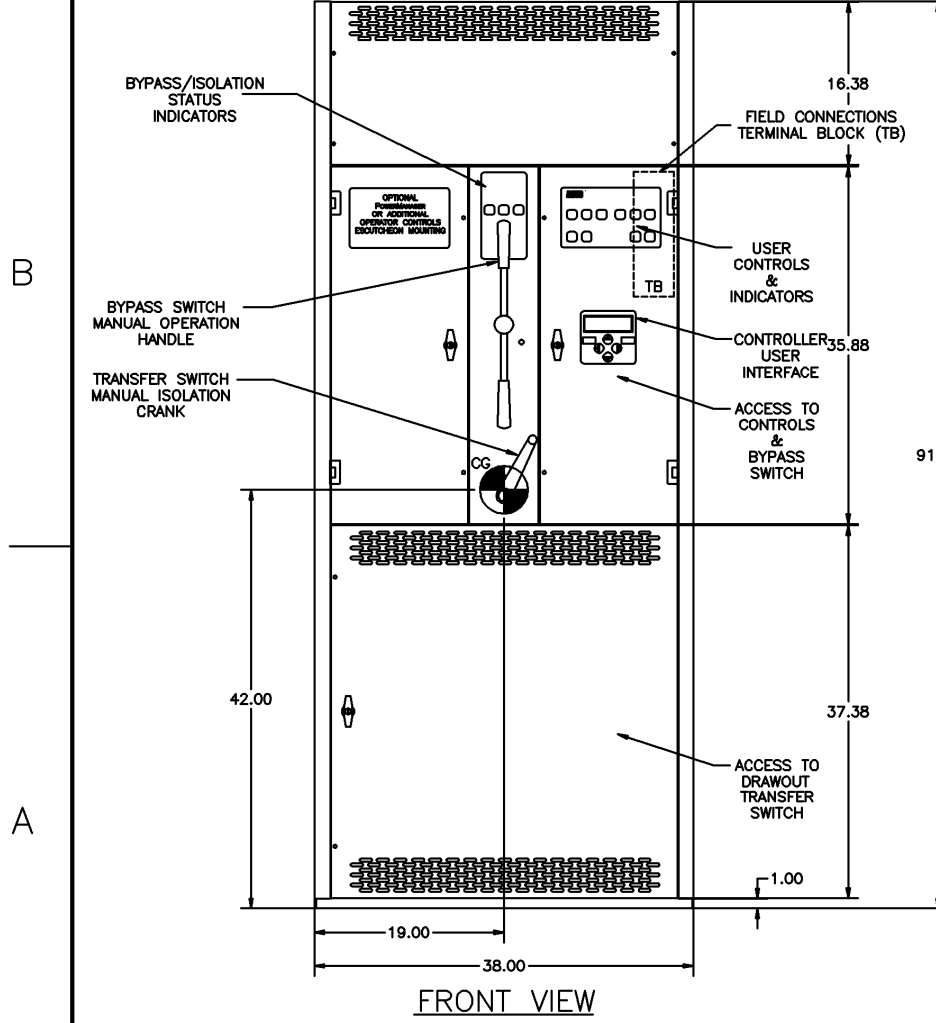
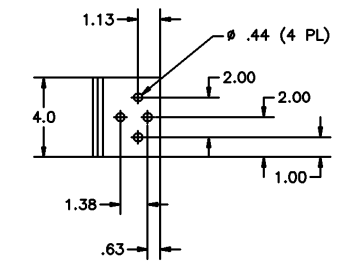
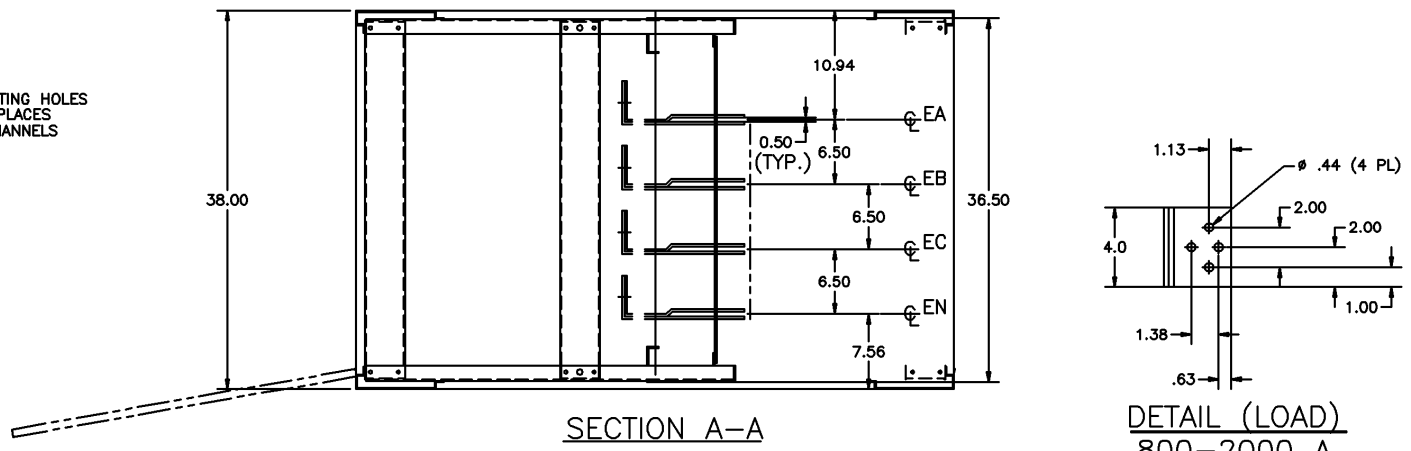
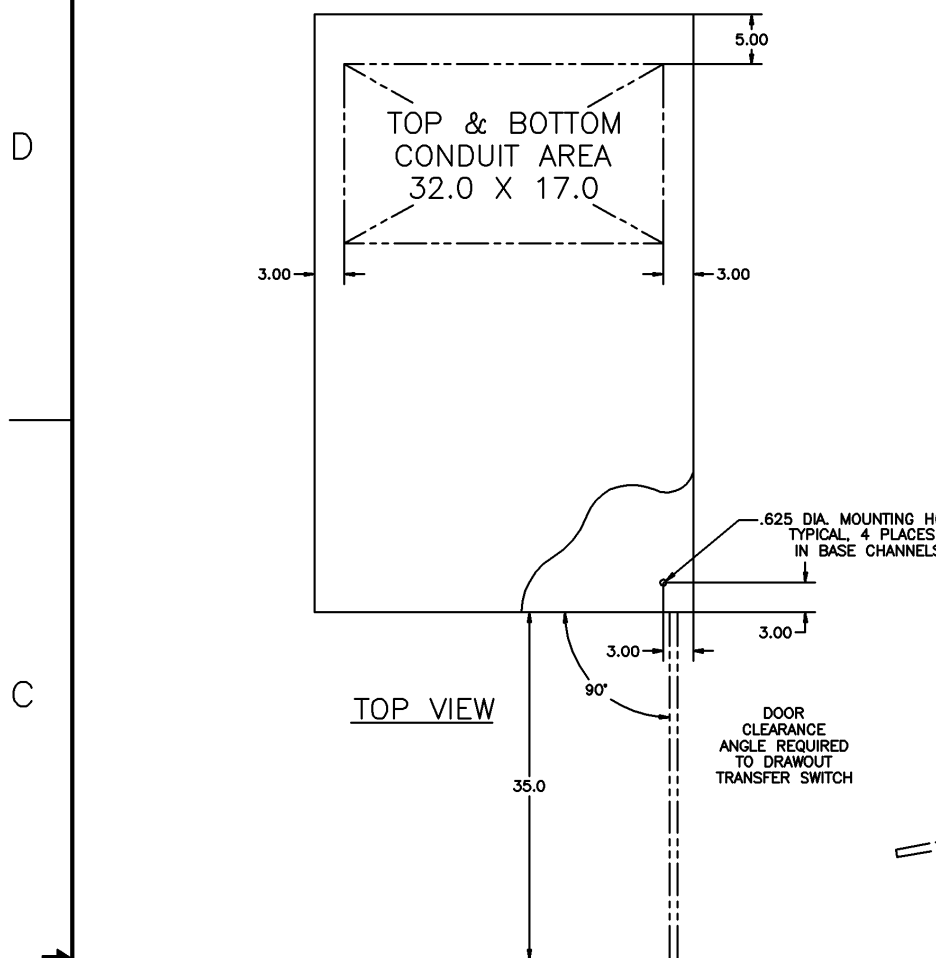
BUS LOCATION CHART		
	DIM.	800-2000 A
EMER & NORM BUS TO BACK CORNER POST	"A"	20.80
LOAD BUS TO BACK CORNER POST	"C"	18.75
EMER & NORM LUG TO BACK CORNER POST	"B"	18.30
LOAD LUG TO BACK CORNER POST	"D"	16.25

GENERAL NOTES

- TYPE 1 ENCLOSURE. FREE STANDING. FLOOR MOUNTED. CODE GAUGE STEEL.
- NEC STANDARD GAUGE PAN TYPE DOORS WITH LOCKABLE HANDLES AND REMOVABLE COVERS.
- FINISH: ANSI 61 GRAY, POLYESTER POWDER STANDARD. OTHER ANSI COLORS AVAILABLE CONSULT FACTORY, UL RECOGNIZED.
- CONSTRUCTION IS IN ACCORDANCE WITH APPLICABLE REQUIREMENTS OF UL 1008.
- PADLOCKING PROVISIONS ARE INCLUDED:
ISOLATION CRANK: THE TRANSFER SWITCH ISOLATION CRANK MAY BE PADLOCKED WITH THE TRANSFER SWITCH IN THE FULLY ISOLATED (DISCONNECTED) POSITION.
- UNIT CAN BE ADAPTED FOR CONNECTION OF BUS DUCT FLANGES. (CONSULT FACTORY)
- RECOMMENDED CLEARANCES:
FRONT: 48 INCHES
REAR: 36 INCHES
- A 20% RATED GROUND BUS IS PROVIDED AT THE BOTTOM REAR OF THE CABLE COMPARTMENT.
- A FULL RATED NEUTRAL CONNECTION FOR EACH SOURCE AND THE LOAD IS OPTIONAL. WHEN PROVIDED IT IS IN ONE OF THE FOLLOWING FORMATS AS SPECIFIED BY THE CATALOG NO. NEUTRAL TYPE:
A: SOLID NEUTRAL BUS
B: SWITCHED NEUTRAL POLE
C: OVERLAPPING NEUTRAL POLE (NOT AVAILABLE ON 7ADTB UNITS)
- CENTER OF GRAVITY
- THE STANDARD SWITCH CONFIGURATION IS FOR TOP EMERGENCY, CENTER LOAD, AND BOTTOM NORMAL. OPTIONALLY, THE SWITCH MAY BE SUPPLIED WITH REVERSE SOURCES. (REFER TO THE WIRING DIAGRAM FURNISHED WITH EACH TRANSFER SWITCH TO DETERMINE TERMINATION POSITIONS).

CABLING NOTES

- ALL SIZES SUPPLIED STANDARD WITH MECHANICAL (SCREW TYPE) LUGS ON THE NORMAL, EMERGENCY & LOAD BUS STABS. ONE (1) LUG PER PHASE AND NEUTRAL EACH SUITABLE FOR CONNECTION OF SIX (6) 1/0-750 MCM CU/AL CABLE FOR 800-2000 AMP SWITCH (SEE NOTE "E" BELOW).
A. LUG MATERIAL: ALUMINUM ALLOY 6061-T6 WITH ELECTRO TIN PLATED FINISH.
B. SCREW MATERIAL: ALUMINUM ALLOY 6262-T9 WITH ELECTRO TIN PLATED FINISH.
C. UL LISTED, CSA CERTIFIED.
D. LUG SCREW TIGHTENING TORQUE PER UL 486B: 19 FT-LBS.
E. SUITABLE WIRE BENDING SPACE IS PROVIDED FOR UP TO SIX (6) 600 MCM CABLES PER TERMINAL FOR THE 800-2000 AMP SWITCH PER NEC.
- GROUND LUGS ARE PROVIDED STANDARD AS FOLLOWS:
(18) 750MCM - 1/0 CU/AL CABLE FOR THE 800-2000 AMP SWITCH.
- CONSULT FACTORY FOR OTHER TERMINATION REQUIREMENTS.



APPROXIMATE SHIPPING WEIGHT, LBS (KG)

AMP SIZE	POLES	WEIGHTS LB (KG)
800 TO 2000	3	2590 (1175)
	B3	2920 (1325)

PROJECT NAME:		OUTLINE & MOUNTING	
7000 "S" SERIES TRANSFER AND BYPASS/ISOLATION		COMPUTER GENERATED DRAWING	
BY DATE	MANUFACTURING TOLERANCES TO BE IN ACCORDANCE WITH ASCO PROCEDURE MP-1-003. FOR PLASTIC PARTS SEE MP-1-005	SCALE	SIZE DS
DRAWN BY DJB 01/31/11	PROPERTY OF ASCO POWER TECHNOLOGIES. USE PERMITTED FOR OUR WORK ONLY. ALL RIGHTS OF DESIGN OR INVENTION ARE RESERVED.	DWG. NO.	910118
CHECKED MM 01/31/11		ISSUE	REV. B
PROJECT APPROVAL BK 01/31/11		REV. A	REV. C
FINAL APPROVAL		REV. D	REV. E

ASCO® ASCO POWER TECHNOLOGIES, L.P.
FLORHAM PARK, NEW JERSEY 07932 U.S.A.

235598 DLB MM 01/31/12
231454 TRD MM 04/07/11
230420 TRD MM 01/31/11

SHEET 1 OF 1