

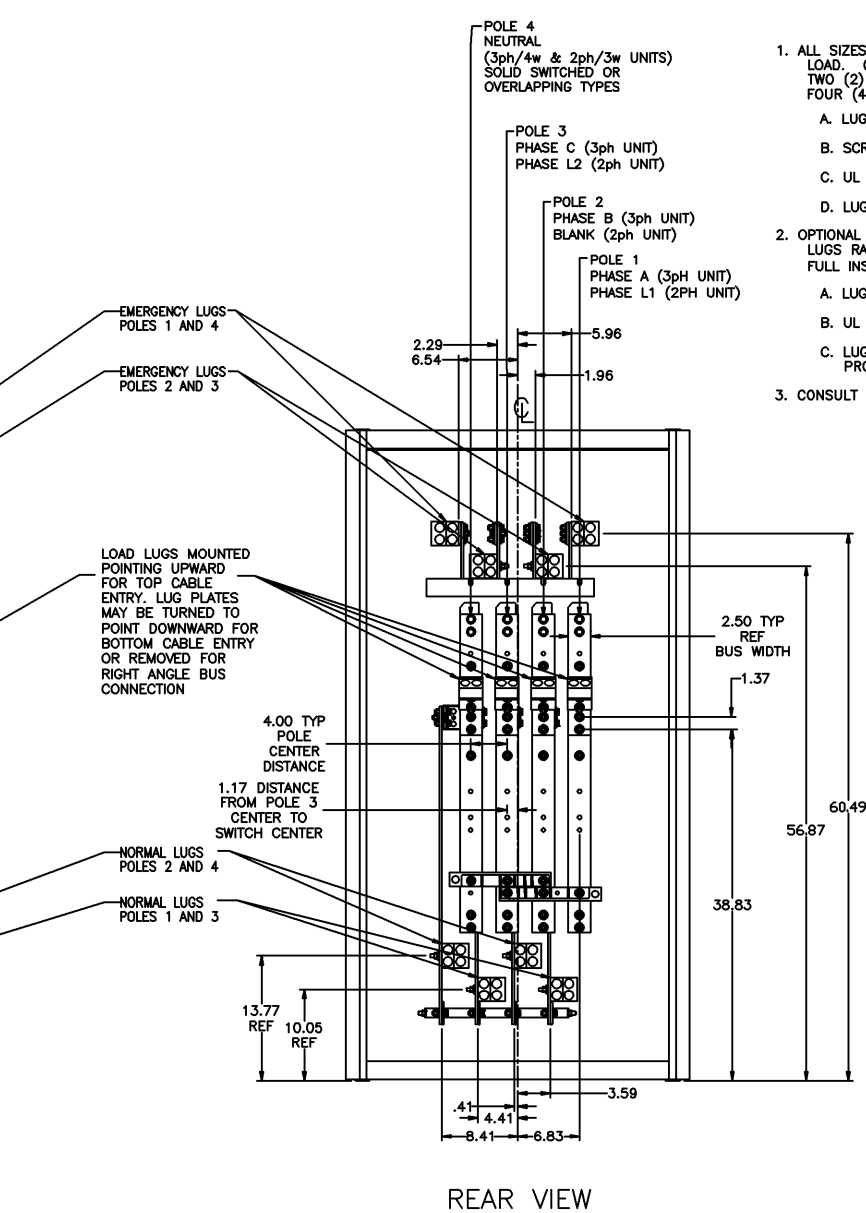
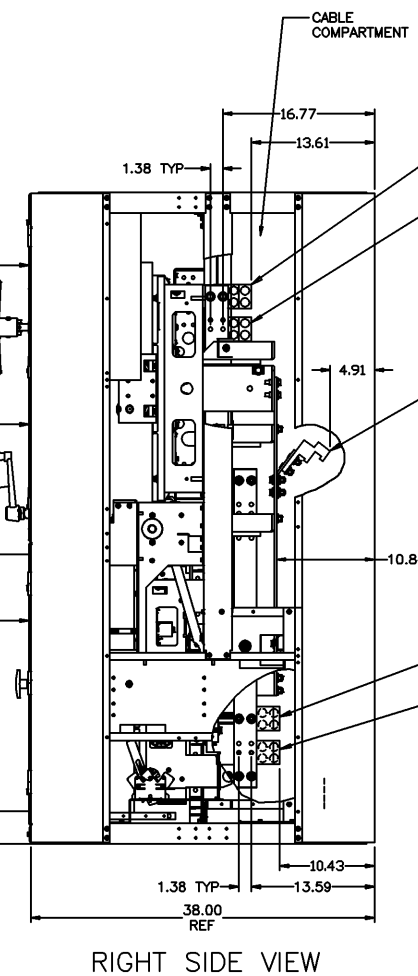
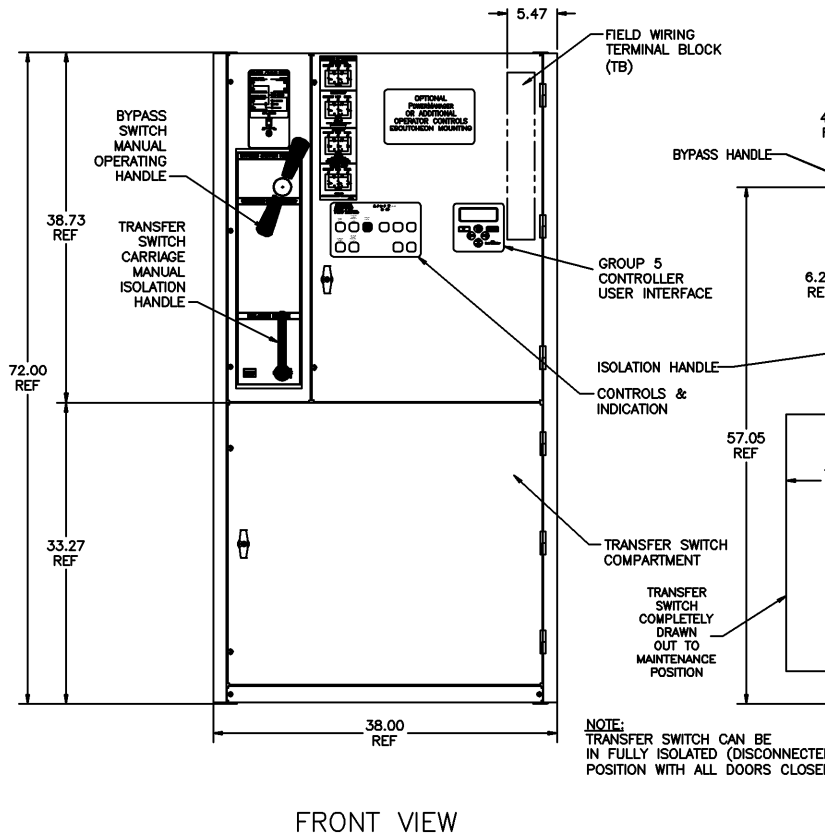
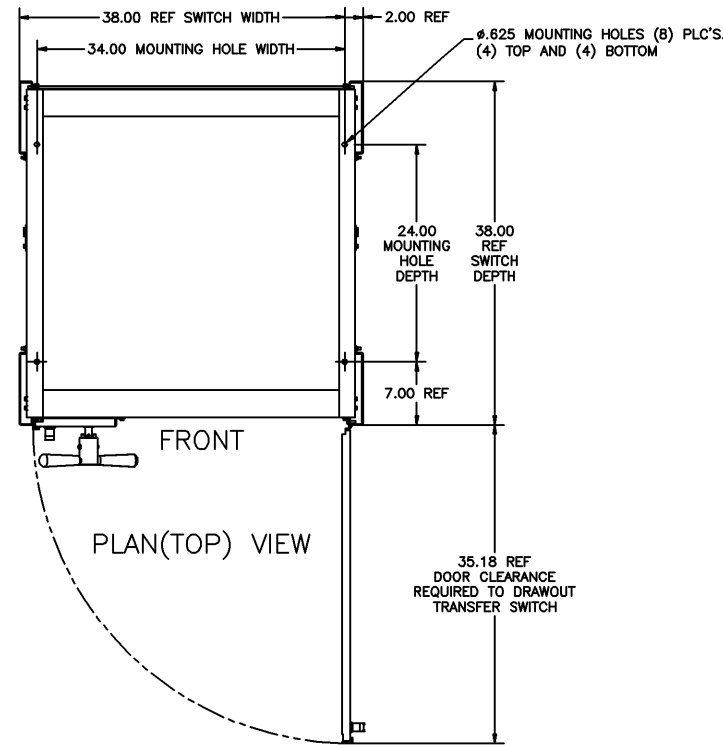
# OUTLINE & MOUNTING FOR ASCO 7000 SERIES AUTOMATIC TRANSFER & BYPASS-ISOLATION SWITCHES TYPES H7ATB, H7ACTB & H7ADTB RATED 600-1200 AMPS

## GENERAL NOTES

- OPEN TYPE. FREE STANDING. FLOOR MOUNTED. 12 GAUGE FRAME CONSTRUCTION.
- NEC STANDARD GAUGE PAN TYPE DOORS WITH LOCKABLE HANDLES AND REMOVABLE COVERS.
- FINISH: ASA 61 GRAY, POLYESTER POWDER. UL RECOGNIZED.
- CONSTRUCTION IS IN ACCORDANCE WITH UL 1008.
- PADLOCKING PROVISIONS ARE INCLUDED:  
ISOLATION HANDLE: THE TRANSFER SWITCH ISOLATION HANDLE MAY BE PADLOCKED WITH THE TRANSFER SWITCH IN THE FULLY ISOLATED (DISCONNECTED POSITION).
- MINIMUM FRONT DOOR CLEARANCE DISTANCE IS 35.18 INCHES FROM FRONT OF SWITCH.
- RECOMMENDED CLEARANCES:  
FRONT: 48 INCHES  
REAR: 36 INCHES
- A FULL RATED NEUTRAL CONNECTION FOR EACH SOURCE AND THE LOAD IS OPTIONAL. WHEN PROVIDED IT IS IN ONE OF THE FOLLOWING FORMATS AS SPECIFIED BY THE CATALOG NO. NEUTRAL TYPE:  
TYPE A: SOLID NEUTRAL BUS  
TYPE B: SWITCHED NEUTRAL POLE  
TYPE C: OVERLAPPING NEUTRAL POLE (NOT AVAILABLE ON 7ADTB & 7ACTB UNITS)
- THE STANDARD SWITCH CONFIGURATION IS FOR TOP EMERGENCY, CENTER LOAD, AND BOTTOM NORMAL. OPTIONALLY, THE SWITCH MAY BE SUPPLIED WITH REVERSE SOURCES. (REFER TO THE WIRING DIAGRAM FURNISHED WITH EACH TRANSFER SWITCH TO DETERMINE TERMINATION POSITIONS).
- APPROXIMATE WEIGHT: 1100 LBS.

## CABLING NOTES

- ALL SIZES SUPPLIED STANDARD WITH MECHANICAL (SCREW TYPE) LUGS ON THE NORMAL, EMERGENCY & LOAD. ONE (1) LUG PER PHASE AND NEUTRAL EACH SUITABLE FOR CONNECTION OF TWO (2) #2-800 MCM CU/AL CABLE FOR 600 AMP SWITCH. FOUR (4) 1/0-750 MCM CU/AL CABLE FOR 800-1200 AMP SWITCH.  
A. LUG MATERIAL: ALUMINUM ALLOY 6061-T6 WITH ELECTRO TIN PLATED FINISH.  
B. SCREW MATERIAL: ALUMINUM ALLOY 6262-T9 WITH ELECTRO TIN PLATED FINISH.  
C. UL LISTED, CSA CERTIFIED.  
D. LUG SCREW TIGHTENING TORQUE PER UL 486B: 375 IN-LBS.
- OPTIONAL COPPER CRIMP LUGS MAY BE SUPPLIED. UP TO THREE (3) TWO HOLE, LONG BARREL CU CRIMP LUGS RATED FOR UP TO 750MCM. (REFER TO CRIMP LUG INSTALLATION DATA PROVIDED WITH UNIT FOR FULL INSTALLATION DETAILS).  
A. LUG MATERIAL: HIGH CONDUCTIVITY WROUGHT COPPER FINISH, ELECTRO TIN PLATED.  
B. UL LISTED, CSA CERTIFIED.  
C. LUG MOUNTING HARDWARE TIGHTENING TORQUE: (REFER TO WITHSTAND CURRENT RATING LABEL PROVIDED ON EACH TRANSFER SWITCH).
- CONSULT FACTORY FOR OTHER TERMINATION REQUIREMENTS.



NOTE: TRANSFER SWITCH CAN BE IN FULLY ISOLATED (DISCONNECTED) POSITION WITH ALL DOORS CLOSED.

PROJECT NAME: XD 1024 H SERIES	CHANGE LETTER: D	EDN NO.:	BY:	APP.:	DATE:
OUTLINE & MOUNTING	201755	AJM	BK		09/17/04
600-1200 AMP OPEN STYLE TB, CTB, DTB TRANSFER WITH BYPASS/ISOLATION	SEE ECH				
	166814	AMS	WK		4/14/04
	166637	SAB	RKJ		3/19/04
	164165	SAB	RKJ		6/24/03
	164098	SAB	WK		03/20/03
					NEW ISSUE
MANUFACTURING TOLERANCES TO BE IN ACCORDANCE WITH ASCO PROCEDURE MP-1-003. FOR PLASTIC PARTS SEE MP-1-005.	SUBSIDIARY DISTRIBUTION				
PROPERTY OF ASCO POWER TECHNOLOGIES. USE PERMITTED FOR OUR WORK ONLY. ALL RIGHTS OF DESIGN OR INVENTION ARE RESERVED.	AE	AM	AN	AP	AR
	CH	CM	CP	CR	CS
	AG	AP	AC	AS	AT
	COMPUTER GENERATED DRAWING				
	SCALE:	ACAD	FILE		
	SIZE:	DWG. NO. DS736939-002			
	CHANGE LETTER:	EDN NO.:	BY:	APP.:	DATE:
	D	201755	AJM	BK	09/17/04
	1 OF 1				