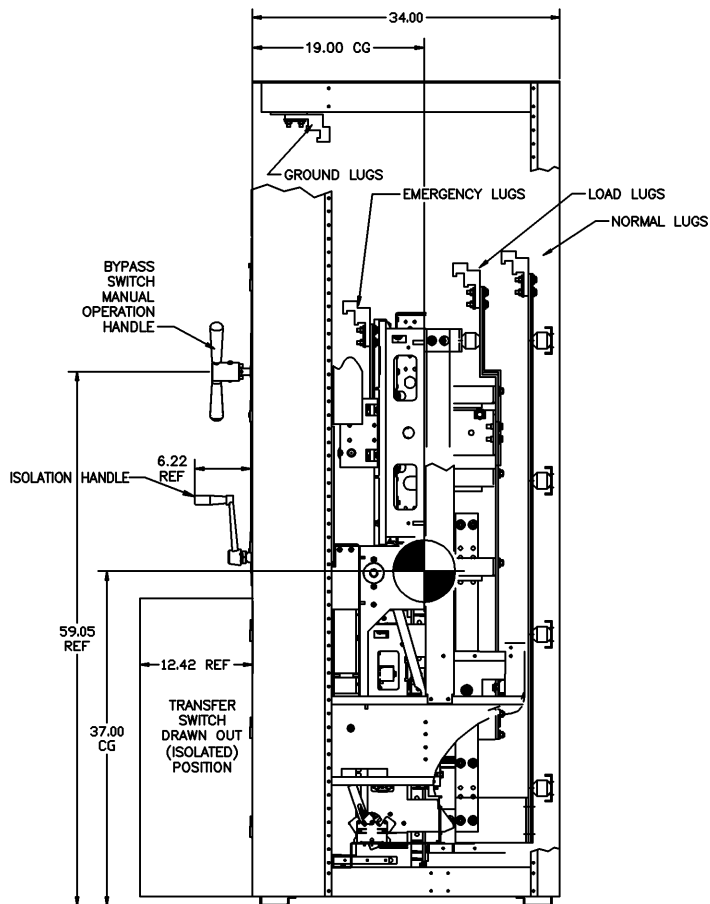
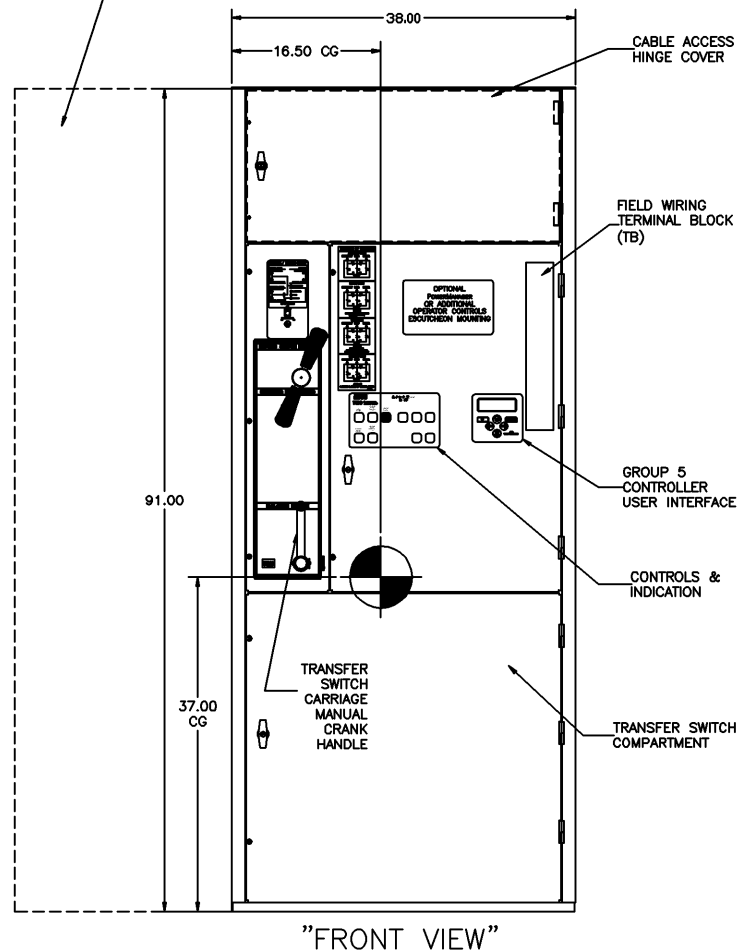
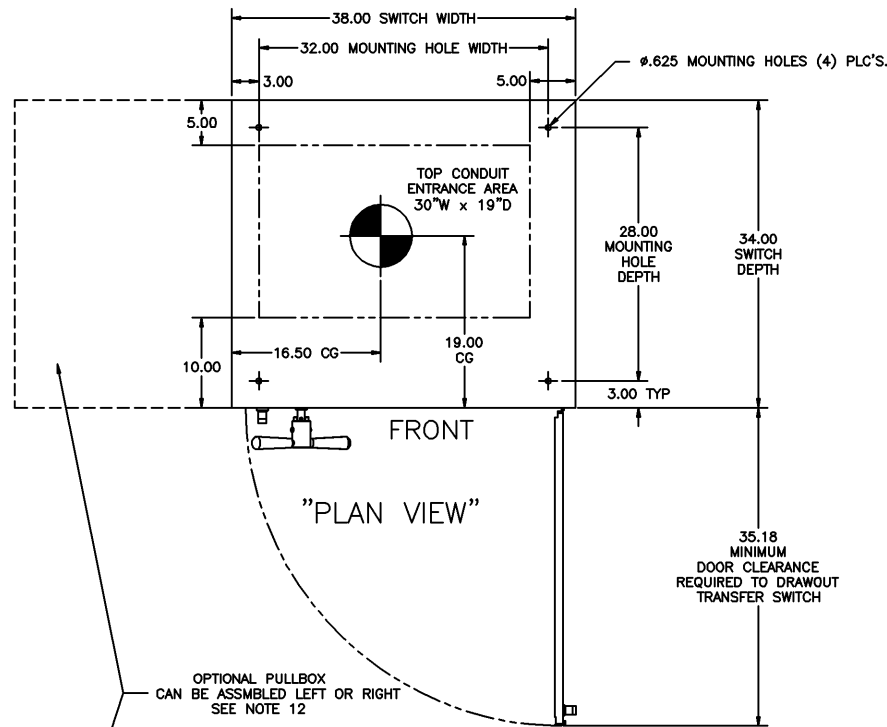


OUTLINE & MOUNTING FOR ASCO® 7000 SERIES AUTOMATIC TRANSFER & BYPASS-ISOLATION SWITCHES TYPES H7ATB, H7ACTB & H7ADTB RATED 1000-1200 AMPS



NOTE:
TRANSFER SWITCH CAN BE
IN FULLY ISOLATED (DISCONNECTED)
POSITION WITH DOOR CLOSED.

"RIGHT SIDE VIEW"
(COVERS REMOVED)

GENERAL NOTES

- TYPE 1 ENCLOSURE. FREE STANDING. FLOOR MOUNTED. CODE GAUGE FORMED FRAME CONSTRUCTION.
- NEC STANDARD GAUGE PAN TYPE DOORS WITH LOCKABLE HANDLES AND REMOVABLE COVERS.
- FINISH: ASA 61 GRAY, POLYESTER POWDER. UL RECOGNIZED.
- SWITCH CONSTRUCTION IS IN ACCORDANCE WITH UL 1008.
NORMAL & LOAD LUG BUS RISER CONSTRUCTION IS IN ACCORDANCE WITH UL 891.
- APPLICABLE U.L. LABELS: UL 1008, UL 891.
- PADLOCKING PROVISIONS ARE INCLUDED:
ISOLATION HANDLE: THE TRANSFER SWITCH ISOLATION HANDLE MAY BE PADLOCKED WITH THE TRANSFER SWITCH IN THE FULLY ISOLATED (DISCONNECTED POSITION).
- UNIT CAN BE ADAPTED FOR CONNECTION OF BUS DUCT FLANGES. (CONSULT FACTORY)
- RECOMMENDED CLEARANCES:
FRONT: 48 INCHES
- A 20% RATED GROUND BUS IS PROVIDED.
- A FULL RATED NEUTRAL CONNECTION FOR EACH SOURCE AND THE LOAD IS OPTIONAL. WHEN PROVIDED IT IS IN ONE OF THE FOLLOWING FORMATS AS SPECIFIED BY THE CATALOG NO. NEUTRAL TYPE:
TYPE A: SOLID NEUTRAL BUS
TYPE B: SWITCHED NEUTRAL POLE
TYPE C: OVERLAPPING NEUTRAL POLE (NOT AVAILABLE ON 7ADTB & 7ACTB UNITS)
- THE STANDARD SWITCH CONFIGURATION IS FOR FRONT EMERGENCY, CENTER LOAD, AND REAR NORMAL. OPTIONALLY, THE SWITCH MAY BE SUPPLIED WITH REVERSE SOURCES. (REFER TO THE WIRING DIAGRAM FURNISHED WITH EACH TRANSFER SWITCH TO DETERMINE TERMINATION POSITIONS).
- TOP CABLE ENTRY FOR ALL SERVICES IS STANDARD. AN OPTIONAL PULLBOX IS AVAILABLE FOR BOTTOM ENTRY. OPTIONAL 26" WIDE PULLBOX PROVIDES A 20" X 24" BOTTOM CONDUIT AREA. (SEE PULL BOX OUTLINE DRAWING #766733-001)
OPTIONAL 18" WIDE PULLBOX (SHOWN) PROVIDES A 12" X 24" BOTTOM CONDUIT AREA. (SEE PULL BOX OUTLINE DRAWING #766733-002)
IF THE PULL BOX IS PROVIDED, THE RIGHT OR LEFT SIDE SKINS OF THE SWITCH ENCLOSURE WHERE THE PULL BOX IS CONNECTED, ARE REMOVED FROM THE SWITCH ENCLOSURE & ATTACHED TO THE PULL BOX. (4) MOUNTING BLOCKS (P/N 757047) ARE USED TO CONNECT THE PULL BOX TO THE ENCLOSURE. PULL BOX IS SUPPLIED SEPARATELY WITHOUT SIDE SKINS.
- APPROXIMATE WEIGHT: 1640 LBS.
- DENOTES CENTER OF GRAVITY

CABLING NOTES

- ALL SIZES SUPPLIED STANDARD WITH MECHANICAL (SCREW TYPE) LUGS ON THE NORMAL, EMERGENCY & LOAD. ONE (1) LUG PER PHASE AND NEUTRAL EACH SUITABLE FOR CONNECTION OF:
TWO (2) #2-600 MCM CU/AL CABLE FOR 600 AMP SWITCH. AND {4 POLE (B3) 400 AMPS};
FOUR (4) #1/0-750 MCM CU/AL CABLE FOR 800-1200 AMP SWITCH.
A. LUG MATERIAL: ALUMINUM ALLOY 6061-T6 WITH ELECTRO TIN PLATED FINISH.
B. SCREW MATERIAL: ALUMINUM ALLOY 6262-T9 WITH ELECTRO TIN PLATED FINISH.
C. UL LISTED, CSA CERTIFIED.
D. LUG SCREW TIGHTENING TORQUE PER UL 486B: 375 IN-LBS.
E. SUITABLE WIRE BENDING SPACE IS PROVIDED FOR UP TO TWO (2) 600MCM CABLES PER TERMINAL FOR THE 600 AMP SWITCH & FOUR (4) 600 MCM CABLES PER TERMINAL FOR THE 800-1200 AMP SWITCH.
- OPTIONAL COPPER CRIMP LUGS MAY BE SUPPLIED. UP TO THREE (3) TWO HOLE, LONG BARREL CU CRIMP LUGS RATED FOR UP TO 750MCM. (REFER TO CRIMP LUG INSTALLATION DATA PROVIDED WITH UNIT FOR FULL INSTALLATION DETAILS).
A. LUG MATERIAL: HIGH CONDUCTIVITY WROUGHT COPPER FINISH, ELECTRO TIN PLATED.
B. UL LISTED, CSA CERTIFIED.
C. LUG MOUNTING HARDWARE TIGHTENING TORQUE: (REFER TO WITHSTAND CURRENT RATING LABEL PROVIDED ON EACH TRANSFER SWITCH).
D. SUITABLE WIRE BENDING SPACE IS PROVIDED FOR UP TO THREE (3) 750MCM CABLES PER TERMINAL.
- GROUNDING LUG FOR UP TO (12) 750MCM - 1/0 CU/AL CABLES IS PROVIDED AS STANDARD.
- CONSULT FACTORY FOR OTHER TERMINATIONS.

D	218028	TR	WK	04/18/08
SEE ECN				
C	210729	MJB	WK	11/06/08
SEE ECN				
B	205144	RN		7-12-05
SEE ECN				
A	202575	RN		11-30-04
SEE ECN				
-	202569	RN		11-29-04
ISSUE				

PROJECT NAME: H SERIES		REV. TO SHEET	ECN NO.	BY	APP.	DATE
OUTLINE & MOUNTING		THIRD ANGLE PROJECTION				
1000-1200 A TYPE 1 FC TB, CTB, DTB		COMPUTER GENERATED DRAWING				
TRANSFER WITH BYPASS/ISOLATION		SCALE: 1/1 SIZE: DS				
DRAWN BY: RN	DATE: 11-29-04	MANUFACTURING TOLERANCES TO BE IN ACCORDANCE WITH ASCO PROCEDURE MP-1-003. FOR PLASTIC PARTS SEE MP-1-005		ASSEMB. REF. NO.		
CHECKED:		PROPERTY OF ASCO POWER TECHNOLOGIES. USE PERMITTED FOR OUR WORK ONLY. ALL RIGHTS OF DESIGN OR INVENTION ARE RESERVED.		DRAWING NO. 736939-010		
TRUSTEE APPROVAL:		ASCO POWER TECHNOLOGIES, LP.		DRAWING D ECN NO. 218028 SHEET 1 OF 1		
FINAL APPROVAL:		FLORHAM PARK, NEW JERSEY 07932 U.S.A.				