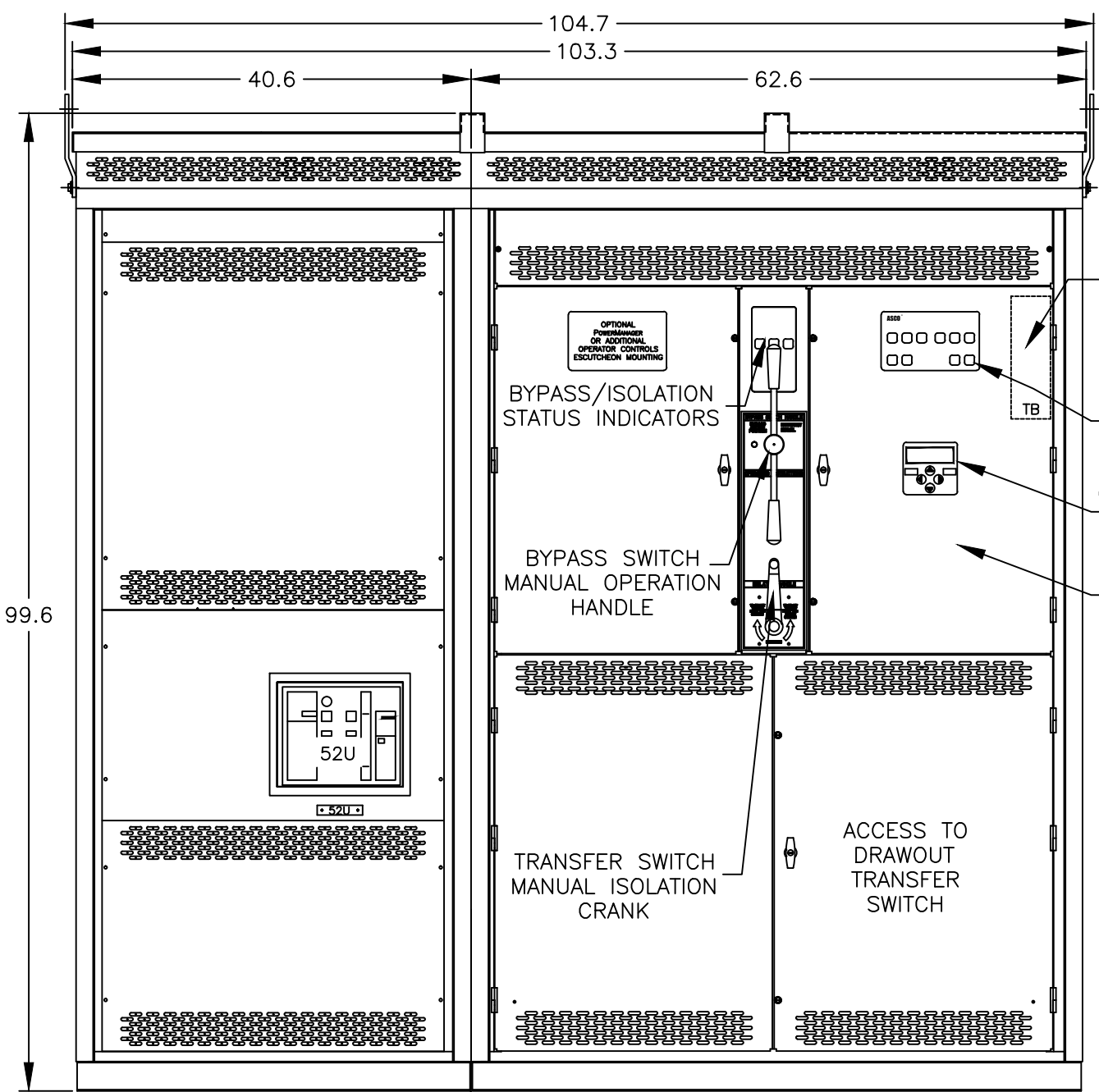
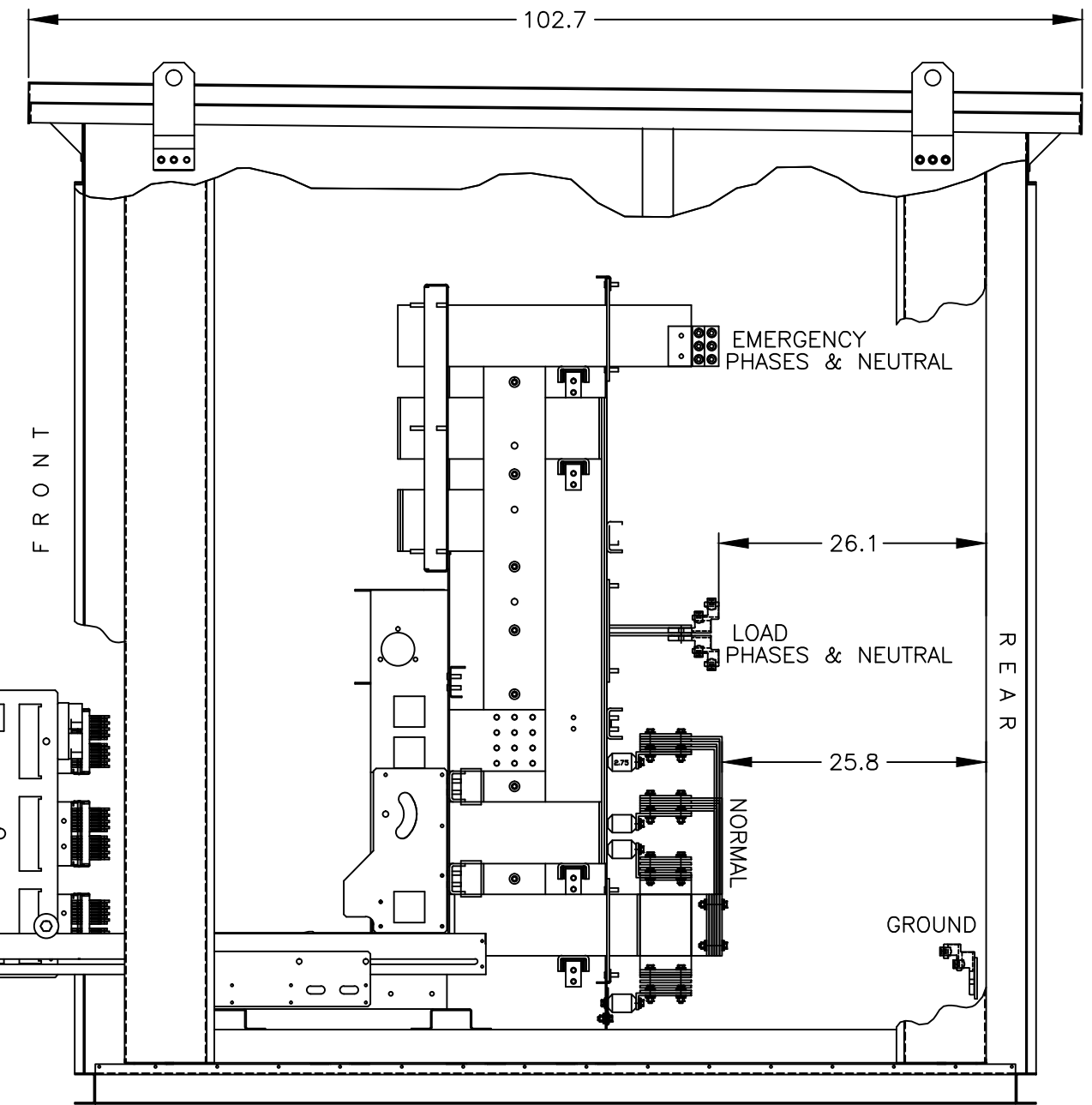


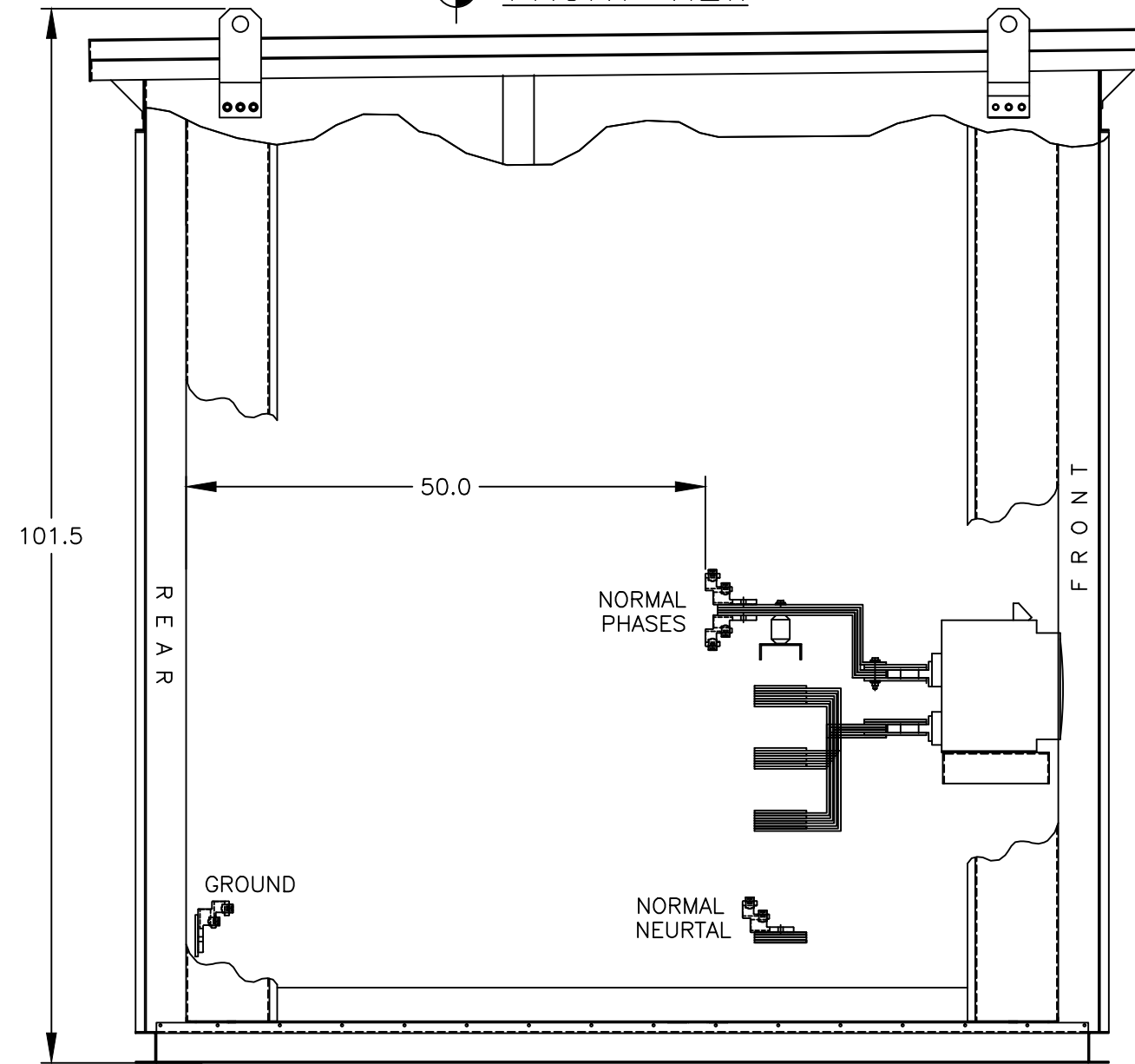
TOP VIEW



SECTION 1 SECTION 2 FRONT VIEW WITHOUT EXTERIOR DOORS



SIDE VIEW



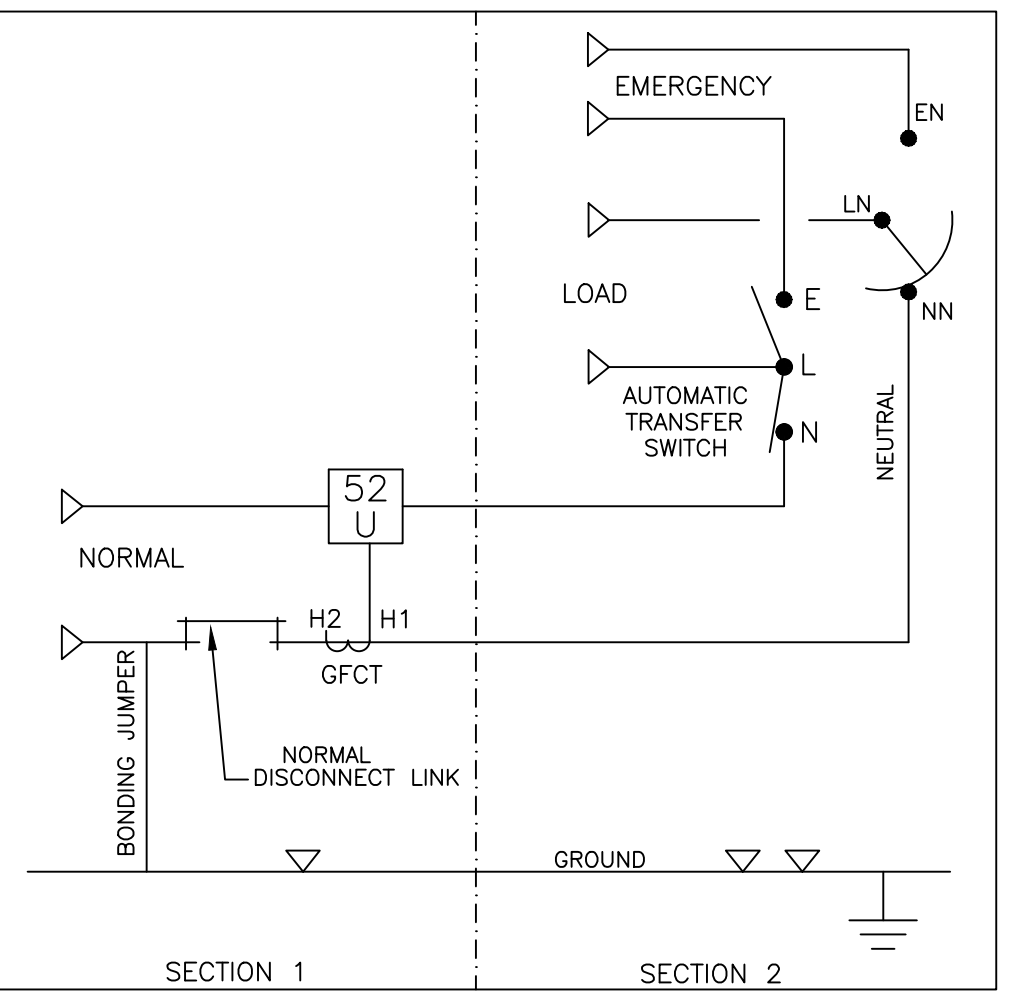
SIDE VIEW

- ### GENERAL NOTES
- TYPE 3R ENCLOSURE. FREE STANDING. FLOOR MOUNTED. CODE GAUGE FORMED STEEL FRAME CONSTRUCTION.
 - FRONT & REAR DOORS HAVE A STAINLESS STEEL, PADLOCKABLE HANDLE.
 - FINISH: TYPE 3R: ANSI 61 GRAY POLYESTER SEMI GLOSS ELECTROSTATIC POWDER.
TYPE 3R (R): EXTERIOR CONSTRUCTED OF CODE GAUGE TYPE 304 STAINLESS STEEL.
TYPE 3R (S): EXTERIOR CONSTRUCTED OF CODE GAUGE TYPE 316 STAINLESS STEEL.
 - RECOMMENDED CLEARANCES:
FRONT: 38 INCHES REAR: 36 INCHES
 - ALL BUS IS SILVER-PLATED COPPER, BASED ON 800A PER SQ. IN. DENSITY.
 - A FULL RATED NEUTRAL CONNECTION FOR EACH SOURCE AND THE LOAD IS OPTIONAL. WHEN PROVIDED IT IS IN ONE OF THE FOLLOWING FORMATS AS SPECIFIED BY THE CATALOG NO. NEUTRAL TYPE:
A. SOLID (COPPER BUS) NEUTRAL
B. SWITCHED NEUTRAL POLE
C. OVERLAPPING NEUTRAL POLE (NOT AVAILABLE ON 7ACUS/7ADUS UNITS)
 - DESIGNED FOR FRONT & REAR ACCESS
 - EXTERIOR VENTS ARE SUPPLIED WITH POLYESTER DUST FILTERS.
 - FOR SPECIFIED TRANSFER SWITCH, REFER TO OPERATOR'S MANUAL PROVIDED WITH UNIT.
 - PROVIDED WITH REMOVABLE LIFTING EYES.
 - ⊕ DENOTES SHIPPING SPLIT. UNIT SHIPS IN 2 SECTIONS.
 - LIFTING PLATES: SECTIONS ARE SUPPLIED WITH (4) LIFTING PLATES. INSPECT PLATES FOR DAMAGE AND TORQUE BOLTS TO 45 FT LBS BEFORE USE. REFER TO ANSI/NEMA PB 2.1 FOR PROPER HANDLING OF EQUIPMENT. AFTER INSTALLATION OF SECTION, REMOVE LIFTING PLATES. REINSTALL BOLTS INTO EXTERIOR HOLES AND TORQUE TO APPROXIMATELY 20 FT LBS.
 - PROVIDED WITH ADJUSTABLE RAIL CARRIAGE SUPPORT LEGS.
NOTE: SUPPORT LEGS MUST REST ON A SECURE, FLAT SURFACE.

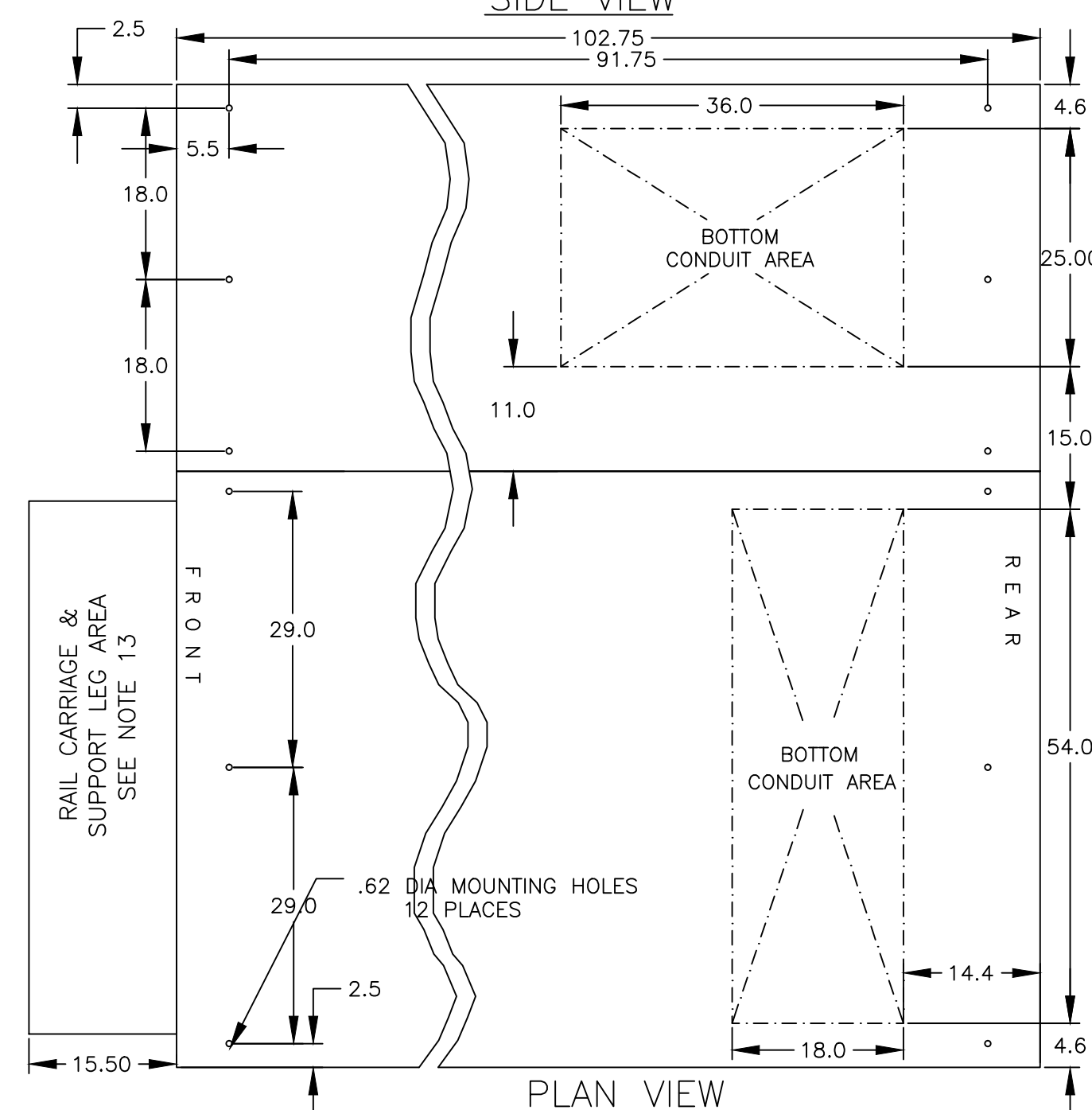
- ### SPECIFICATIONS
- SERVICE VOLTAGE:
SYSTEM RATING: 4000 AMPS 3 ϕ , 4W.
GROUND BUS- 800 AMPS
SHORT CIRCUIT RATING- 100,000 AIC RMS SYM @ 480V.
THE EMERGENCY SOURCE INPUT MUST BE PROTECTED BY A REMOTE OVERCURRENT PROTECTION DEVICE AS LISTED ON THE MARKINGS ON THE TRANSFER SWITCH.
 - NEUTRAL BUS: 4000 AMPS
 - APPLICABLE LABELS: U.L. 891- SUITABLE ONLY FOR USE AS SERVICE EQUIPMENT.

- ### CABLING NOTES
- ALL SIZES SUPPLIED STANDARD WITH MECHANICAL (SCREW TYPE) LUGS.
A. LUG MATERIAL: ALUMINUM ALLOY 6061-T6 WITH ELECTRO TIN PLATED FINISH.
B. SCREW MATERIAL: ALUMINUM ALLOY 6262-T9 WITH ELECTRO TIN PLATED FINISH.
C. UL LISTED, CSA CERTIFIED.
D. LUG SCREW TIGHTENING TORQUE PER UL 486B: 19 FT-LBS.
E. SUITABLE WIRE BENDING SPACE IS PROVIDED.
 - OPTIONAL COPPER CRIMP LUGS MAY BE SUPPLIED.
A. LUG MATERIAL: HIGH CONDUCTIVITY WROUGHT COPPER FINISH, ELECTRO TIN PLATED.
B. UL LISTED, CSA CERTIFIED.
C. LUG MOUNTING HARDWARE TIGHTENING TORQUE: (REFER TO WITHSTAND CURRENT RATING LABEL PROVIDED ON EACH TRANSFER SWITCH).
D. SUITABLE WIRE BENDING SPACE IS PROVIDED.
 - CONSULT FACTORY FOR OTHER TERMINATION REQUIREMENTS.

- ### NOTES 4000 AMPS
- SUPPLIED WITH STANDARD MECHANICAL (SCREW TYPE) LUGS ON THE NORMAL, EMERGENCY & LOAD BUS STABS. TWO (2) LUGS PER PHASE AND NEUTRAL SUITABLE FOR CONNECTION OF TWELVE (12) 1/0 AWG-750MCM CU/AL CABLE (SEE NOTE "A" BELOW).
A. SUITABLE WIRE BENDING SPACE IS PROVIDED FOR UP TO TWELVE (12) 750MCM CABLES PER TERMINAL PER NEC.
 - OPTIONAL COPPER CRIMP LUGS MAY BE SUPPLIED. UP TO TWELVE (12) TWO HOLE, LONG BARREL CU CRIMP LUGS RATED FOR UP TO 750MCM. (REFER TO CRIMP LUG INSTALLATION DATA PROVIDED WITH UNIT FOR FULL INSTALLATION DETAILS).
A. SUITABLE WIRE BENDING SPACE IS PROVIDED FOR UP TO TWELVE (12) 750MCM CABLES PER TERMINAL PER NEC.
 - GROUND LUGS ARE PROVIDED STANDARD AS FOLLOWS;
(36) 1/0 - 750MCM CU/AL CABLE



ONE LINE DIAGRAM (SHOWN WITH SWITCHED NEUTRAL)



PLAN VIEW

CIRCUIT BREAKER: ITEM 52U

SQUARE "D" 100% RATED TYPE 'NW', 4000AF/4000AT, STATIONARY MOUNTED, MANUALLY OPERATED, WITH LONG DELAY, SHORT DELAY, INSTANTANEOUS AND GROUND FAULT TRIP SETTINGS. 100,000 AIC RMS SYM @ 480V

PROJECT NAME:		OUTLINE		MOUNTING	
GAUB 4000A, NW SERVICE ENTRANCE BREAKER ON NORMAL		TYPE 3R 100 X 103 X 103		THIRD ANGLE PROJECTION	
REV. TO SHEET	ECN NO.	BY	APP.	DATE	
DRAWN BY		DATE	MANUFACTURING TOLERANCES TO BE IN ACCORDANCE WITH ASCO PROCEDURE MP-1-003. FOR PLASTIC PARTS SEE MP-1-055		ASSEM. REF. NO.
CHECKED		3/19/13	PROPERTY OF ASCO POWER TECHNOLOGIES. USE PERMITTED FOR OUR WORK ONLY. ALL RIGHTS OF DESIGN OR INVENTION ARE RESERVED.		SCALE
PROJECT APPROVAL			884865-020		SIZE DS
FINAL APPROVAL			ASCO POWER TECHNOLOGIES, L.P.		COMPUTER GENERATED DRAWING
			FLORHAM PARK, NEW JERSEY 07932 U.S.A.		DWG. NO.
			884865-020		SCALE 1:1
			DRAWING B		REV. NO. 264835
			SHEET		1 OF 1